



Record of Survey - LT 587696

Survey Number LT 587696
Surveyor Reference GSL21138 - Summerset Rangiora - 3 Lots
Surveyor Fineen Cecilia Mary McCarthy
Survey Firm Graham Surveying Limited
Surveyor Declaration I Fineen Cecilia Mary McCarthy, being a licensed cadastral surveyor, certify that--
(a) this dataset provided by me and its related survey are accurate, correct and in accordance with the Cadastral Survey Act 2002 and Cadastral Survey Rules 2021; and
(b) the survey was undertaken by me or under my personal direction.
Declared on 27 Oct 2023 03:33 PM

Survey Details

Dataset Description Lots 1- 3 being subdivision of Lot 1 DP 547085
Purpose LT Subdivision
Status Approved as to Survey
Land District Canterbury
Meridional Circuit Mount Pleasant 2000

Type	Survey
Survey Class	Class A
Vertical Datum	None

Survey Dates

Surveyed Date	06/07/2023	Certified Date	27/10/2023
Submitted Date	27/10/2023 15:33:20	Survey Approval Date	01/11/2023
Deposit Date			

Referenced Surveys

Survey Number	Land District	Bearing Correction
DP 45826	Canterbury	-0°00'30"
DP 73557	Canterbury	0°00'00"
DP 76235	Canterbury	0°00'00"
DP 80710	Canterbury	0°00'00"
DP 82548	Canterbury	0°00'00"
DP 83720	Canterbury	0°00'00"
DP 547085	Canterbury	0°00'00"

Territorial Authorities

Waimakariri District

Comprised In

RT 932746

Created Parcels

Parcels	Parcel Intent	Area	RT Reference
Lot 1 Deposited Plan 587696	Fee Simple Title	2.1066 Ha	1116126
Lot 2 Deposited Plan 587696	Fee Simple Title	10.5895 Ha	1116127
Lot 3 Deposited Plan 587696	Vesting on Deposit for Local Purpose Reserve Hydro	1.1160 Ha	1116128



Record of Survey - LT 587696

Created Parcels

Parcels	Parcel Intent	Area	RT Reference
Area B Deposited Plan 587696	Easement		
Area A Deposited Plan 587696	Easement		
Total Area		<hr/> 13.8121 Ha	

Mark and Vector

Survey Number DP 587696

Meridional Circuit Mount Pleasant 2000

From	To	Code	Bearing	Adpt Surv	Bearing Correction	Distance	Adpt Surv	Class
MA I DP 72754	MA 2 DP 547085	ob0	277°57'20"	A DP 547085	0°00'00"	265.64 A	DP 547085	
MA 2 DP 547085	IT 3 DP 547085	ob1	258°47'00"	M		516.91 M		
IT 3 DP 547085	IS 1 DP 547085	ob2	169°35'50"	A DP 547085	0°00'00"	238.02 A	DP 547085	
IS 1 DP 547085	IS V DP 45826	ob6	77°41'55"	M		181.55 M		
IS V DP 45826	IS 4 DP 547085	ob7	97°37'25"	M		293.60 M		
IS 4 DP 547085	IT II DP 73557	ob12	132°49'50"	A DP 547085	0°00'00"	84.65 A	DP 547085	
IT II DP 73557	MA I DP 72754	ob13	28°56'25"	A DP 547085	0°00'00"	406.46 A	DP 547085	
IT 3 DP 547085	MN 3 DP 529017	ob3	84°27'00"	M		21.31 M		
MN 3 DP 529017	MN 2 DP 529017	ob17	73°37'50"	M		146.91 M		
MN 2 DP 529017	NAIL VIII DP 80710	ob18	83°24'20"	M		71.77 M		
NAIL VIII DP 80710	MA I DP 587696	ob19	79°52'00"	M		177.62 M		
MA I DP 587696	MA 2 DP 547085	ob25	79°53'30"	M		100.30 M		
NAIL VIII DP 80710	IS V DP 45826	ob20	183°02'20"	M		247.47 M		
MA I DP 587696	IS 4 DP 547085	ob26	162°00'30"	M		333.64 M		
NAIL VIII DP 80710	IS I DP 69972	ob21	170°34'40"	A DP 80710	0°00'00"	8.18 A	DP 80710	
IS I DP 69972	IT I DP 76235	ob27	79°51'40"	A DP 82548	0°00'00"	93.57 A	DP 82548	
IT I DP 76235	IT X DP 73557	ob28	79°51'40"	A DP 83720	0°00'00"	126.24 A	DP 83720	
IT X DP 73557	IT I DP 73557	ob30	154°01'10"	A DP 73557	0°00'00"	188.39 A	DP 73557	
IT I DP 73557	IS 4 DP 547085	ob31	188°37'25"	A DP 547085	0°00'00"	149.01 A	DP 547085	
IT I DP 73557	IR II DP 587696	ob32	216°48'20"	M		183.93 M		
IR II DP 587696	IS V DP 45826	ob88	280°50'00"	M		206.85 M		
IS V DP 45826	IR III DP 587696	ob8	308°21'30"	M		92.85 M		
IR III DP 587696	IS 1 DP 547085	ob95	227°21'40"	M		142.14 M		
IR II DP 587696	IT II DP 73557	ob89	111°01'30"	M		160.62 M		
IT 3 DP 547085	PEG XIX DP 45826	ob4	85°38'00"	A DP 547085	0°00'00"	32.16 A	DP 547085	
PEG XIX DP 45826	PEG XVI DP 45826	ob34	79°51'30"	A DP 45826	-0°00'30"	78.11 A	DP 45826	Class A
PEG XVI DP 45826	UNMK A DP 587696	ob36	79°51'30"	A DP 45826	-0°00'30"	23.14 C		Class A
UNMK A DP 587696	PEG XXI DP 45826	ob37	79°51'30"	A DP 45826	-0°00'30"	22.40 C		Class A
PEG XXI DP 45826	PEG (2) DP 73557	ob38	95°32'30"	A DP 45826	-0°00'30"	15.60 A	DP 45826	Class A
PEG (2) DP 73557	MN 2 DP 529017	ob39	341°02'00"	A DP 547085	0°00'00"	21.92 A	DP 547085	
PEG (2) DP 73557	UNMK 2 DP 547085	ob40	79°51'40"	A DP 73557	0°00'00"	213.89 A	DP 73557	Class A
UNMK 2 DP 547085	UNMK 1 DP 547085	ob41	79°51'40"	A DP 73557	0°00'00"	2.00 A	DP 73557	Class A

Mark and Vector

Survey Number DP 587696

Meridional Circuit Mount Pleasant 2000

From	To	Code	Bearing	Adpt Surv	Bearing Correction	Distance	Adpt Surv	Class
UNMK 1 DP 547085	PEG 5 DP 547085	ob43	79°51'40"	A DP 73557	0°00'00"	129.65 A	DP 73557	Class A
PEG 5 DP 547085	MA 2 DP 547085	ob112	351°50'00"	M		17.18 M		
PEG XIX DP 45826	PEG XVIII DP 45826	ob35	214°48'30"	A DP 45826	-0°00'30"	21.19 A	DP 45826	Class A
PEG XVIII DP 45826	UNMK B DP 587696	ob45	169°45'05"	A DP 45826	-0°00'30"	114.36 C		Class A
UNMK B DP 587696	UNMK C DP 587696	ob46	169°45'05"	A DP 45826	-0°00'30"	11.35 C		Class AD
UNMK C DP 587696	UNMK 5 DP 547085	ob48	169°45'05"	A DP 45826	-0°00'30"	3.43 C		Class AD
UNMK 5 DP 547085	PEG 2 DP 547085	ob49	169°45'05"	A DP 45826	-0°00'30"	1.80 A	DP 547085	
PEG 2 DP 547085	IS 1 DP 547085	ob50	180°11'00"	A DP 547085	0°00'00"	90.32 A	DP 547085	
PEG 5 DP 547085	PEG DP 14643	ob113	169°16'30"	A DP 73557	0°00'00"	166.74 A	DP 73557	Class A
PEG DP 14643	UNMK 4 DP 547085	ob51	169°12'00"	A DP 73557	0°00'00"	121.52 A	DP 73557	Class A
UNMK 4 DP 547085	UNMK 3 DP 547085	ob52	169°12'00"	A DP 73557	0°00'00"	2.31 A	DP 73557	Class A
UNMK 3 DP 547085	PEG DP 73557	ob53	169°12'00"	A DP 73557	0°00'00"	82.25 A	DP 73557	Class A
PEG DP 73557	PEG 4 DP 547085	ob54	230°53'00"	A DP 547085	0°00'00"	22.80 A	DP 547085	Class AD
PEG 4 DP 547085	PEG 3 DP 547085	ob55	230°53'00"	A DP 547085	0°00'00"	6.50 A	DP 547085	Class AD
PEG 3 DP 547085	IT II DP 73557	ob56	61°31'00"	A DP 547085	0°00'00"	19.40 A	DP 547085	
IT I DP 73557	PEG DP 14643	ob33	45°00'00"	A DP 73557	0°00'00"	9.58 A	DP 73557	
UNMK B DP 587696	PEG 1 DP 587696	ob47	112°35'00"	C		14.37 C		Class A
PEG 1 DP 587696	PEG 2 DP 587696	ob57	137°47'30"	C		3.55 C		Class A
PEG 2 DP 587696	PEG 3 DP 587696	ob74	150°53'00"	C		9.86 C		Class A
PEG 3 DP 587696	PEG 4 DP 587696	ob58	174°22'00"	C		10.82 C		Class A
PEG 4 DP 587696	PEG 5 DP 587696	ob59	81°14'00"	C		40.77 C		Class A
PEG 5 DP 587696	PEG 6 DP 587696	ob60	89°48'30"	C		9.89 C		Class A
PEG 6 DP 587696	PEG 7 DP 587696	ob109	98°24'00"	C		21.05 C		Class A
PEG 7 DP 587696	PEG 8 DP 587696	ob61	110°02'00"	C		18.38 C		Class A

Mark and Vector

Survey Number DP 587696

Meridional Circuit Mount Pleasant 2000

From	To	Code	Bearing	Adpt Surv	Bearing Correction	Distance	Adpt Surv	Class
PEG 8 DP 587696	PEG 9 DP 587696	ob62	100°54'40"	C		51.54 C		Class A
PEG 9 DP 587696	PEG 10 DP 587696	ob63	100°55'00"	C		4.80 C		Class A
PEG 10 DP 587696	PEG 11 DP 587696	ob65	128°30'30"	C		54.91 C		Class A
PEG 11 DP 587696	PEG 12 DP 587696	ob66	104°02'00"	C		49.19 C		Class A
PEG 12 DP 587696	PEG 13 DP 587696	ob67	102°36'00"	C		80.27 C		Class A
PEG 13 DP 587696	PEG 14 DP 587696	ob68	92°51'00"	C		40.32 C		Class A
PEG 14 DP 587696	PEG 15 DP 587696	ob69	107°41'00"	C		55.59 C		Class A
PEG 15 DP 587696	PEG 16 DP 587696	ob70	100°41'00"	C		68.57 C		Class A
PEG 16 DP 587696	PEG 17 DP 587696	ob71	109°32'00"	C		11.42 C		Class A
PEG 17 DP 587696	PEG 18 DP 587696	ob72	117°50'00"	C		28.62 C		Class A
PEG 18 DP 587696	PEG DP 73557	ob73	100°38'00"	C		8.12 C		Class A
PEG 9 DP 587696	PEG 19 DP 587696	ob64	15°28'00"	C		20.19 C		Class A
PEG 19 DP 587696	PEG 20 DP 587696	ob75	349°45'00"	C		43.78 C		Class A
PEG 20 DP 587696	PEG 21 DP 587696	ob76	248°29'00"	C		9.95 C		Class A
PEG 21 DP 587696	UNMK G DP 587696	ob77	259°45'00"	C		33.41 C		Class A
PEG 22 DP 587696	UNMK H DP 587696	ob110	349°45'20"	C		44.50 C		Class A
UNMK H DP 587696	UNMK L DP 587696	ob79	349°45'20"	C		40.40 C		Class A
UNMK L DP 587696	PEG 23 DP 587696	ob81	349°45'20"	C		45.51 C		Class A
UNMK H DP 587696	UNMK J DP 587696	ob80	259°45'00"	C		22.64 C		Class A
UNMK J DP 587696	UNMK K DP 587696	ob82	349°45'00"	C		40.40 C		Class A
UNMK K DP 587696	UNMK L DP 587696	ob83	79°45'00"	C		22.64 C		Class A
UNMK 1 DP 547085	UNMK 7 DP 547085	ob44	169°49'00"	A	DP 73557	0°00'00"	169.71 A DP 73557	Class A
UNMK 7 DP 547085	UNMK 10 DP 547085	ob84	149°15'30"	A	DP 73557	0°00'00"	58.93 A DP 73557	Class A
UNMK 10 DP 547085	UNMK 4 DP 547085	ob85	109°22'30"	A	DP 73557	0°00'00"	128.58 A DP 73557	Class A

Mark and Vector

Survey Number DP 587696

Meridional Circuit Mount Pleasant 2000

From	To	Code	Bearing	Adpt Surv	Bearing Correction	Distance	Adpt Surv	Class
UNMK 2 DP 547085	UNMK 9 DP 547085	ob42	169°49'00"	A DP 73557	0°00'00"	170.12 A	DP 73557	Class A
UNMK 9 DP 547085	UNMK 8 DP 547085	ob86	149°15'30"	A DP 73557	0°00'00"	60.02 A	DP 73557	Class A
UNMK 8 DP 547085	UNMK 3 DP 547085	ob87	109°22'30"	A DP 73557	0°00'00"	130.47 A	DP 73557	Class A
IR III DP 587696	PEG 1 DP 587696	ob96	272°56'00"	M		94.09 M		
IR III DP 587696	PEG 2 DP 587696	ob97	271°22'20"	M		91.60 M		
IR III DP 587696	PEG 3 DP 587696	ob98	265°46'00"	M		87.02 M		
IR III DP 587696	PEG 4 DP 587696	ob99	258°39'40"	M		87.43 M		
IR III DP 587696	PEG 5 DP 587696	ob100	256°25'00"	M		46.73 M		
IR III DP 587696	PEG 6 DP 587696	ob101	252°53'00"	M		37.18 M		
IR III DP 587696	PEG 7 DP 587696	ob102	226°23'00"	M		20.32 M		
IR III DP 587696	PEG 8 DP 587696	ob103	172°49'00"	M		20.48 M		
IR III DP 587696	PEG 9 DP 587696	ob104	119°29'20"	M		61.08 M		
IR III DP 587696	PEG 19 DP 587696	ob105	100°16'20"	M		59.50 M		
IR III DP 587696	PEG 20 DP 587696	ob106	57°23'20"	M		60.25 M		
IR III DP 587696	PEG 21 DP 587696	ob107	55°13'00"	M		50.53 M		
IR III DP 587696	PEG 22 DP 587696	ob108	15°32'00"	M		28.84 M		
NAIL VIII DP 80710	PEG 23 DP 587696	ob22	251°46'40"	M		106.74 M		
IS V DP 45826	PEG 10 DP 587696	ob9	330°43'00"	M		30.53 M		
IS V DP 45826	PEG 11 DP 587696	ob10	105°05'00"	M		29.04 M		
IS V DP 45826	PEG 12 DP 587696	ob11	104°25'20"	M		78.22 M		
IR II DP 587696	PEG 13 DP 587696	ob90	272°13'00"	M		49.10 M		
IR II DP 587696	PEG 14 DP 587696	ob91	269°16'00"	M		8.79 M		
IR II DP 587696	PEG 15 DP 587696	ob92	111°03'00"	M		47.33 M		
IR II DP 587696	PEG 16 DP 587696	ob93	104°54'40"	M		115.44 M		

Mark and Vector

Survey Number DP 587696

Meridional Circuit Mount Pleasant 2000

From	To	Code	Bearing	Adpt Surv	Bearing Correction	Distance	Adpt Surv	Class
IR II DP 587696	PEG 17 DP 587696	ob94	105°19'40"	M		126.83 M		
IT II DP 73557	PEG DP 73557	ob14	31°34'00"	A	DP 73557	10.84 A	DP 73557	
IT II DP 73557	PEG 18 DP 587696	ob15	347°54'00"	M		10.97 M		
IT II DP 73557	PEG 4 DP 547085	ob16	246°49'00"	M		13.07 M		
NAIL VIII DP 80710	PEG (2) DP 73557	ob23	245°40'10"	M		70.41 M		
NAIL VIII DP 80710	PEG XXI DP 45826	ob24	250°57'30"	M		84.30 M		
UNMK G DP 587696	PEG 22 DP 587696	ob78	349°45'20"	C		5.00 C		Class A
PEG 23 DP 587696	UNMK A DP 587696	ob111	349°45'20"	C		2.00 C		Class A

Mark Name	Mark Condition	Description
IR II DP 587696		Spike 0.3m deep
IR III DP 587696		Spike 0.3m deep
IS 1 DP 547085		flush in seal entranceway
IS V DP 45826		Spike in bank, 0.3m deep
IT 3 DP 547085		0.3d in berm, western side of corner of Townsend Rd and South Belt, 0.8m from FoK
IT II DP 73557		0.3d
MA 2 DP 547085		Masonry anchor flush in top of kerb outside # 90 South Belt
MA I DP 587696		Flush in kerb
MN 2 DP 529017		flush in kerb
MN 3 DP 529017		flush in kerb
NAIL VIII DP 80710		Flush in kerb
IS 4 DP 547085	Destroyed	now destroyed
PEG 2 DP 547085	Searched For and Not Found	
PEG 3 DP 547085	Searched For and Not Found	
PEG DP 73557	Searched For and Not Found	
PEG XIX DP 45826	Searched For and Not Found	
PEG XVIII DP 45826	Searched For and Not Found	

*** End of Report ***

Land Registration District
Canterbury

Plan Number
DP 587696

GSL Ref: GSL21138

Territorial Authority (the Council)
Waimakariri District Council

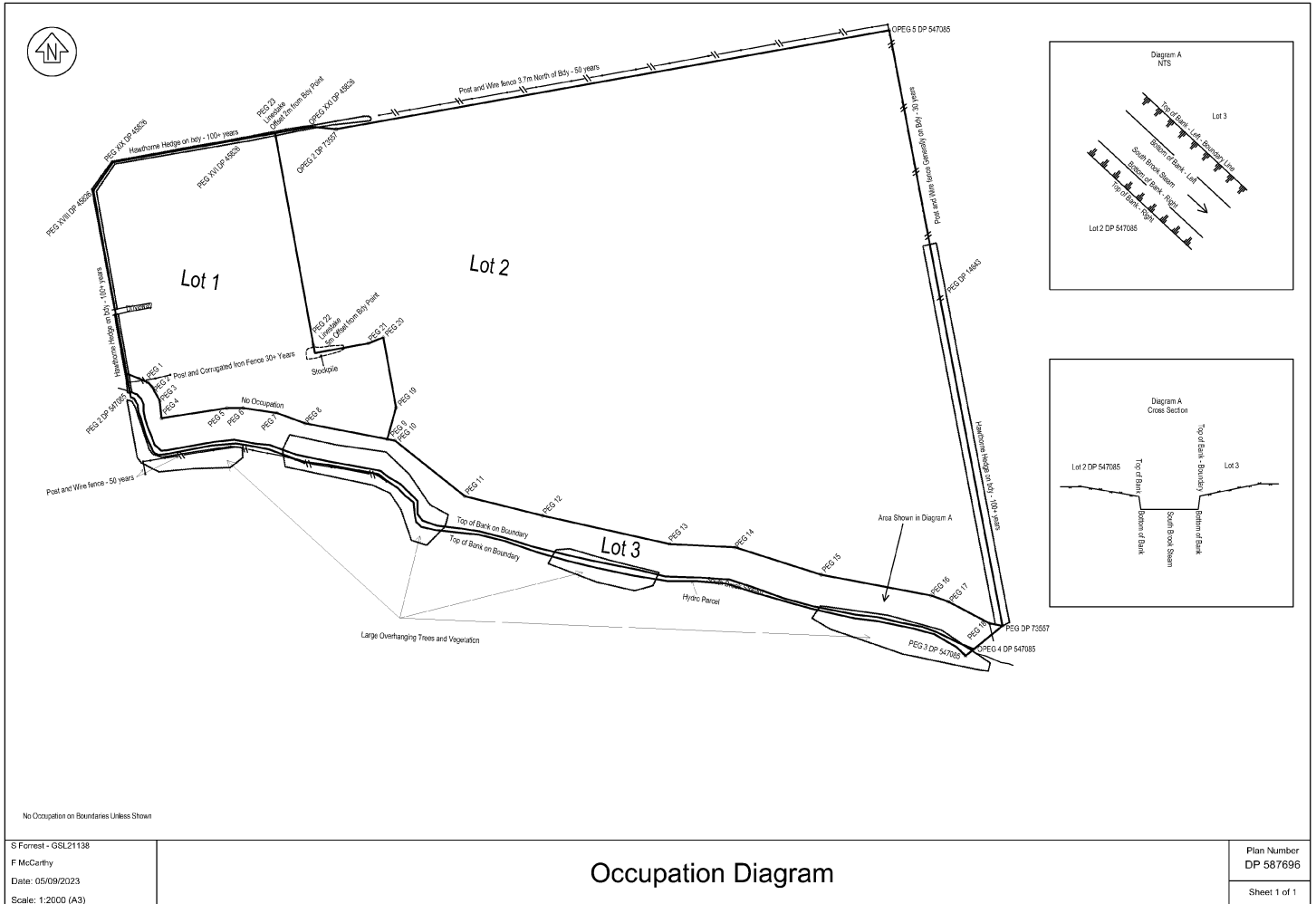
Memorandum of Easements			
Purpose	Shown	Burdened Land (Servient Tenement)	Benefitted Land (Dominant Tenement)
Right to Drain Sewage	B	Lot 1	Lot 2

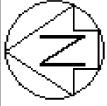
Schedule of Existing Easements in Gross			
Purpose	Shown	Burdened Land (Servient Tenement)	Document
Right to Drain Sewage	A	Lot 2	TE A274256.9

Amalgamation Condition

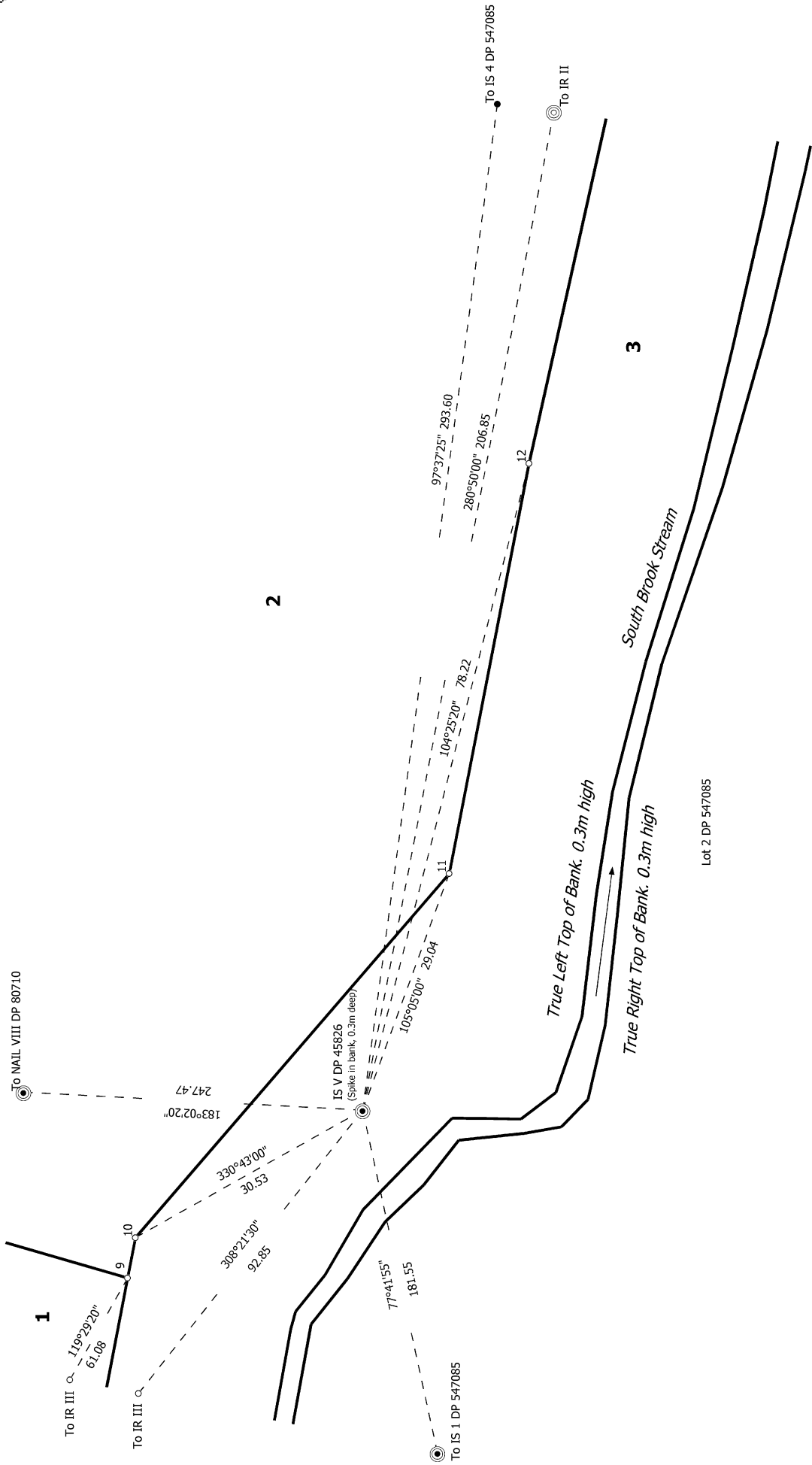
Lots 1 and 2 are to be held together under a Covenant specifying that neither of those lots shall be separated or transferred into different ownership until the farm buildings straddling the boundary between those lots are demolished and removed from site.

Occupation Diagram



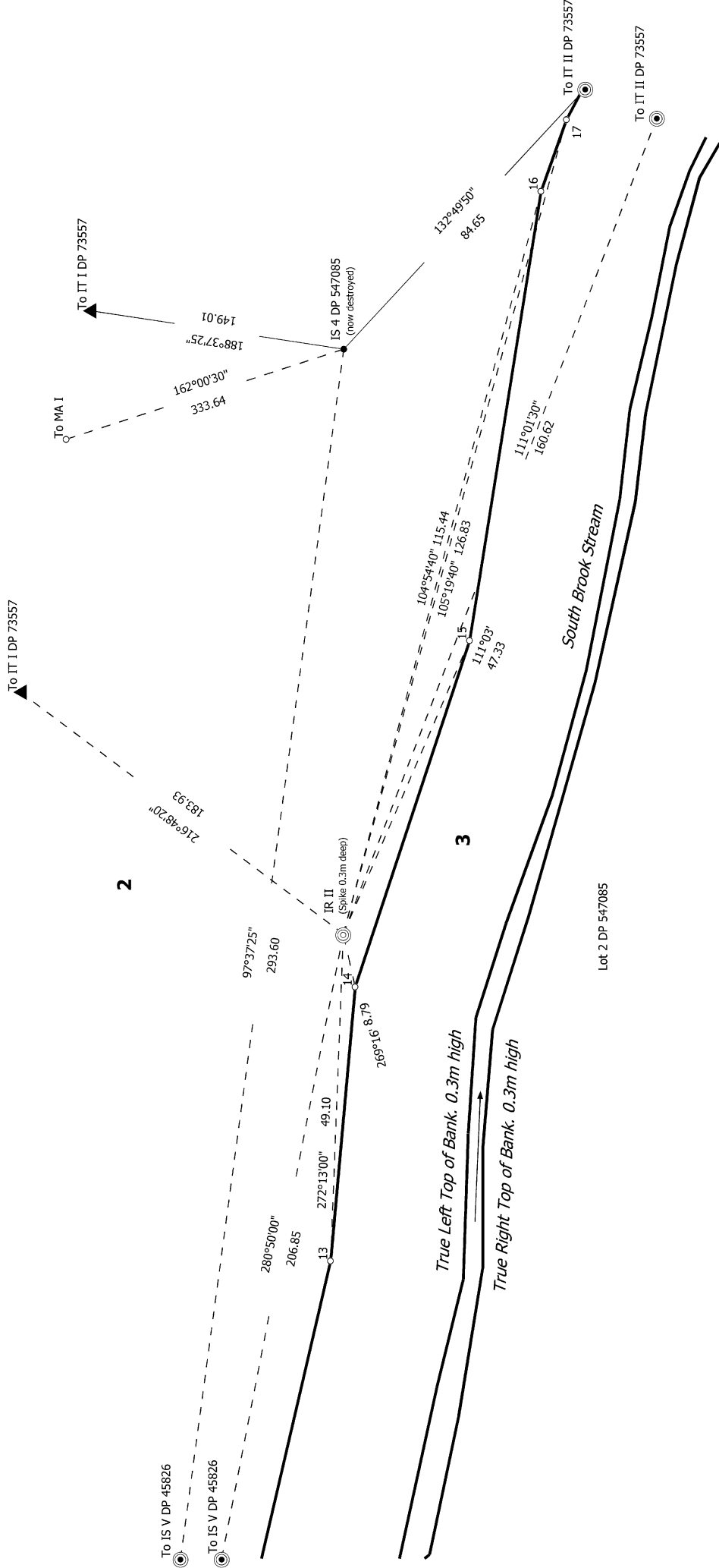


Diag. BC



<p>Land District: Canterbury</p> <p>Digitally Generated Plan</p> <p>Generated on: 01/11/2023 06:37am Page 12 of 13</p>	<p>Lots 1 - 3 being subdivision of Lot 1 DP 547085</p>	<p>Surveyor: Fineen Cecilia Mary McCarthy Firm: Graham Surveying Limited Date of Survey: 6/07/2023</p>	<p>Record of Survey LT 587696 Approved on: 1/11/2023</p>
---	---	--	--

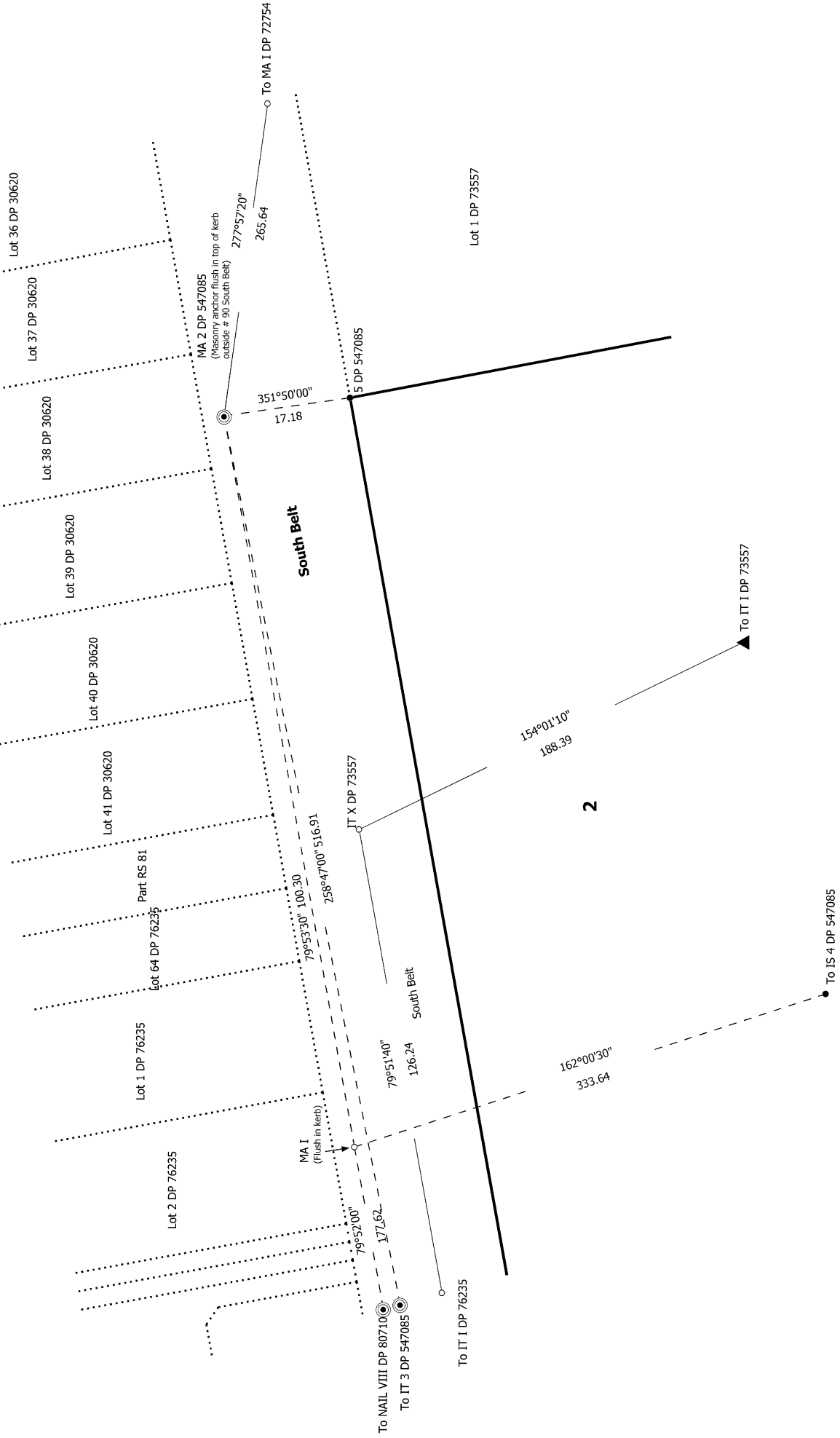
Diag. BD



S 4/8

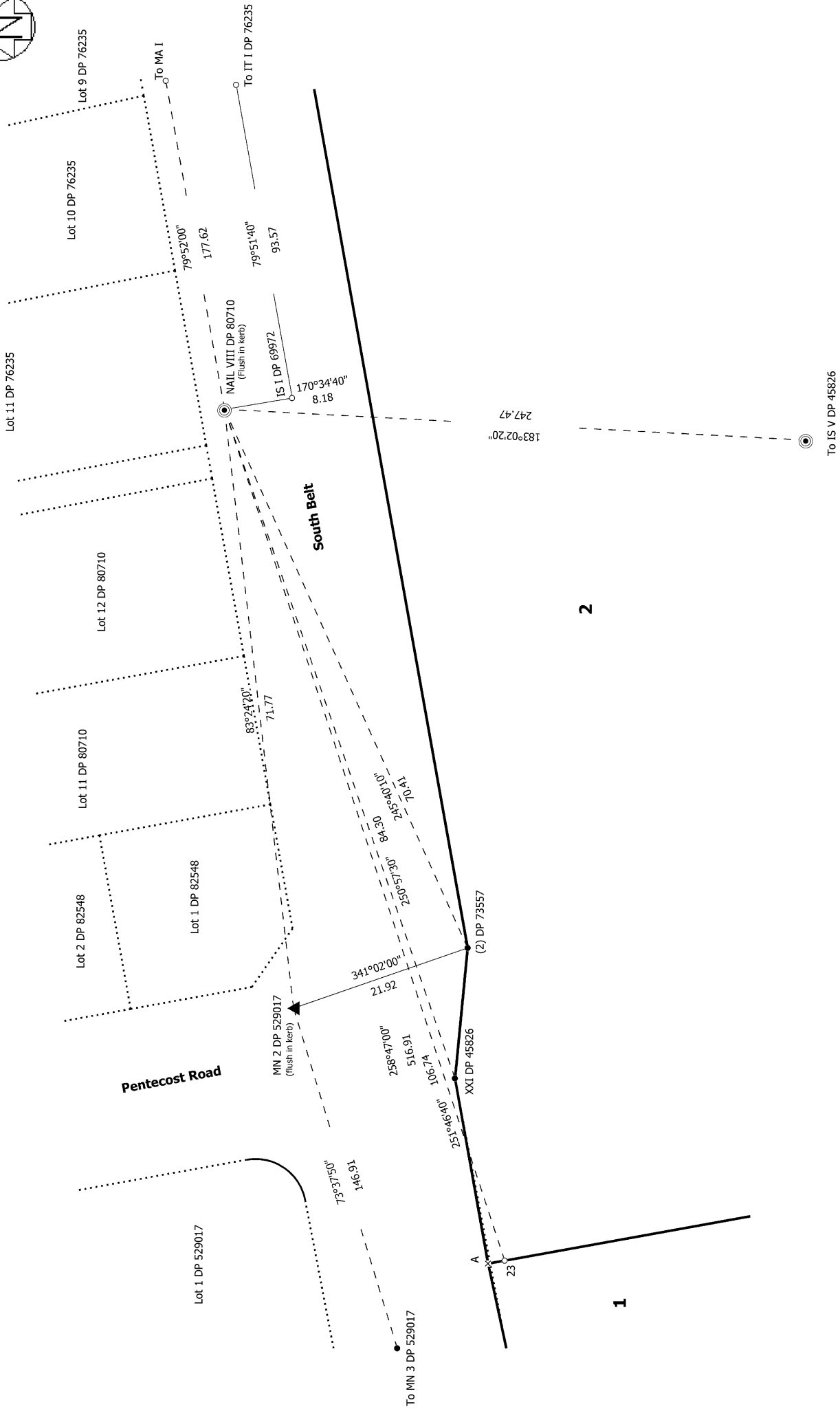
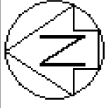
<p>Land District: Canterbury Digitally Generated Plan <small>Generated on: 01/11/2023 06:37am Page 13 of 19</small></p>	<p>Lots 1 - 3 being subdivision of Lot 1 DP 547085</p>	<p>Surveyor: Fineen Cecilia Mary McCarthy Firm: Grahm Surveying Limited Date of Survey: 6/07/2023</p>	<p>Record of Survey LT 587696 Approved on: 1/11/2023</p>
--	---	---	--

Diag. C



<p>S 6/8</p>	<p>Record of Survey LT 587696 Approved on: 1/11/2023</p>
<p>Surveyor: Fineen Cecilia Mary McCarthy Firm: Grahm Surveying Limited Date of Survey: 6/07/2023</p>	<p>Surveyor: Fineen Cecilia Mary McCarthy Firm: Grahm Surveying Limited Date of Survey: 6/07/2023</p>
<p>Land District: Canterbury</p>	<p>Lots 1 - 3 being subdivision of Lot 1 DP 547085</p>
<p>Digitally Generated Plan Generated on: 01/11/2023 06:37am Page 15 of 19</p>	<p>Digitally Generated Plan Generated on: 01/11/2023 06:37am Page 15 of 19</p>

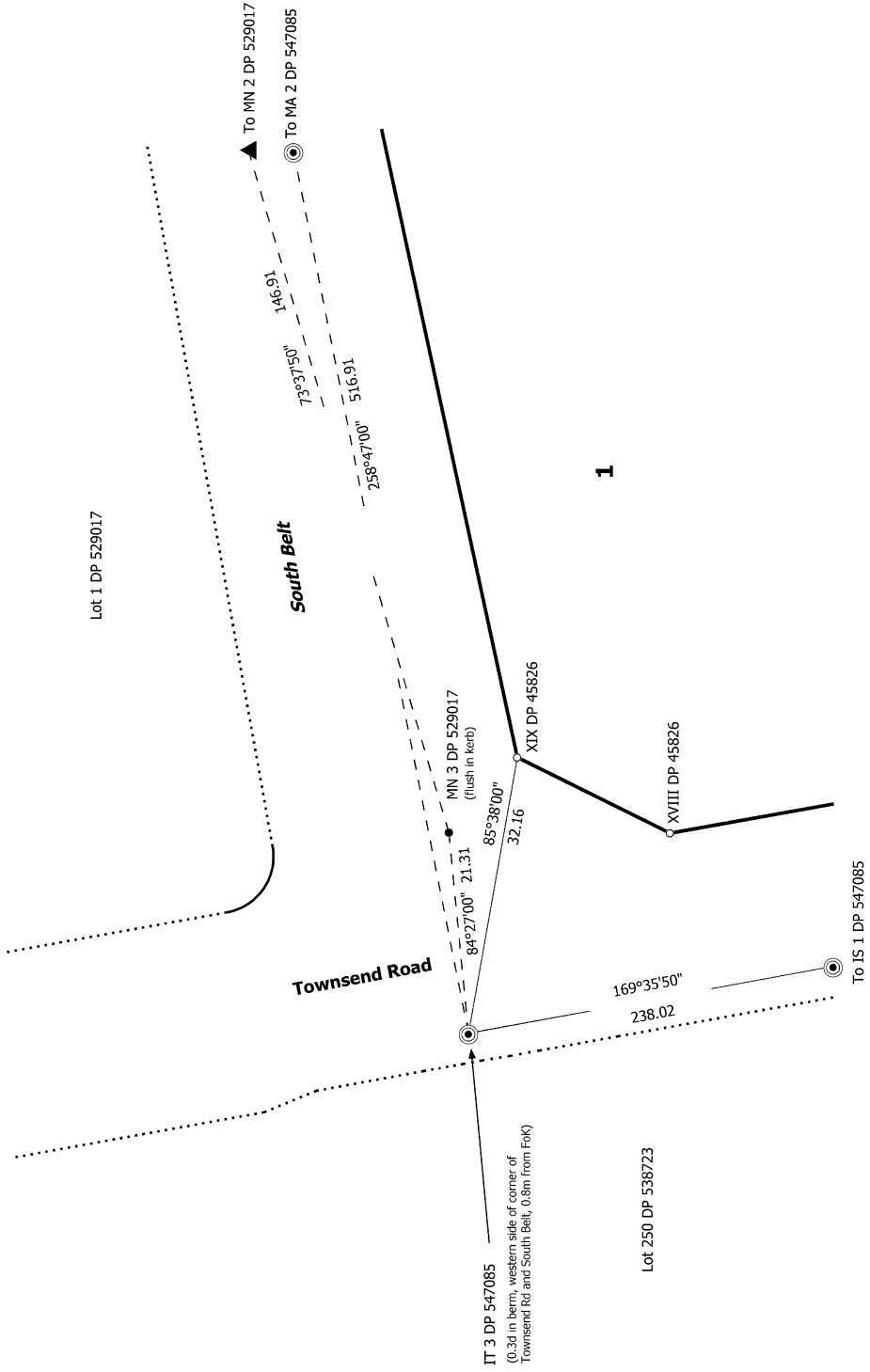
Diag. BB



<p>Land District: Canterbury Digitally Generated Plan <small>Generated on: 01/11/2023 06:37:am Page 16 of 19</small></p>	<p>Lots 1 - 3 being subdivision of Lot 1 DP 547085</p>	<p>Surveyor: Fineen Cecilia Mary McCarthy Firm: Grahame Surveying Limited Date of Survey: 6/07/2023</p>	<p>Record of Survey LT 587696 Approved on: 1/11/2023</p>
---	---	---	---



Diag. A



Land District: Canterbury

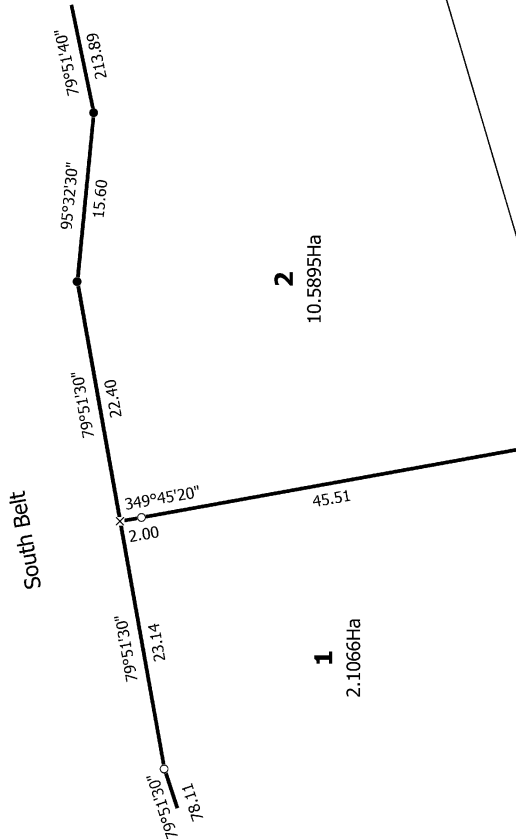
Digitally Generated Plan
Generated on: 01/11/2023 06:37:am | Page 17 of 19

Lots 1 - 3 being subdivision of Lot 1 DP 547085

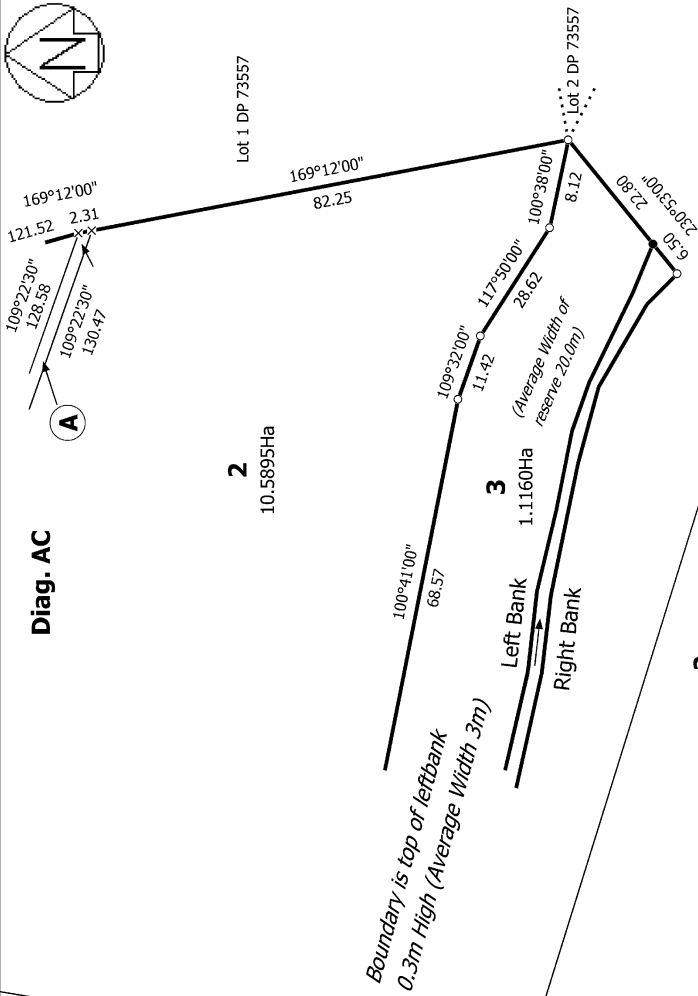
Surveyor: Fineen Cecilia Mary McCarthy
Firm: Graham Surveying Limited
Date of Survey: 6/07/2023

Record of Survey
LT 587696
Approved on: 1/11/2023

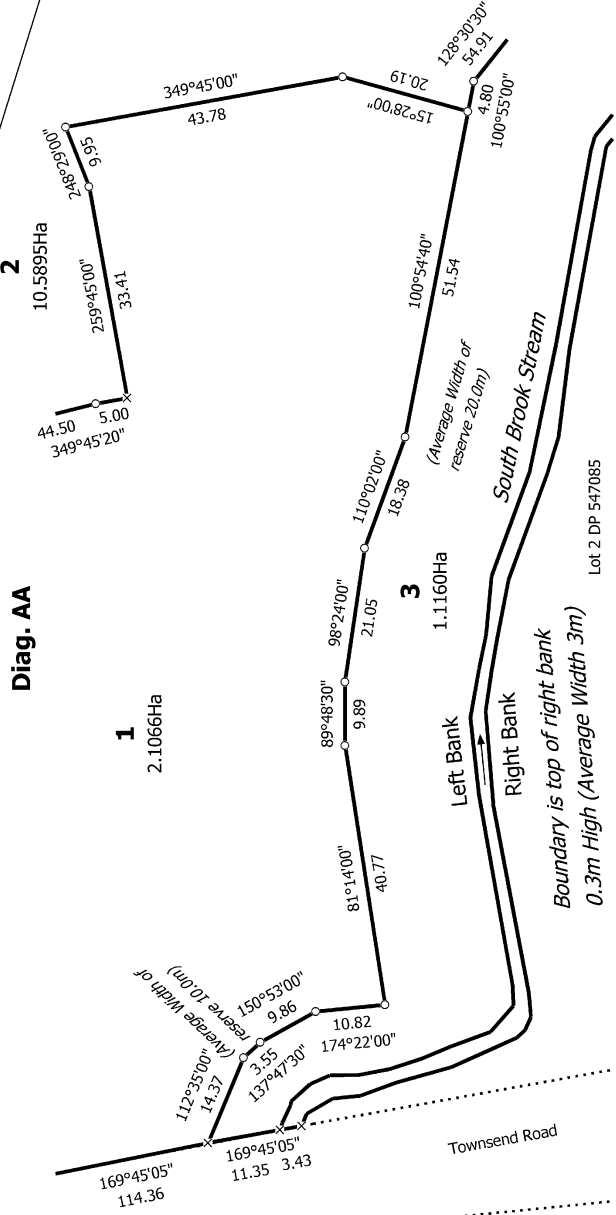
Diag. AB



Diag. AC



Diag. AA



Lot 3 is to vest in the Waimakariri District Council as Local Purpose Reserve (Esplanade)

Lot 2 DP 547085

T 2/2

Land District: Canterbury

Lots 1 - 3 being subdivision of Lot 1 DP 547085

Surveyor: Fineen Cecilia Mary McCarthy
Firm: Graham Surveying Limited
Date of Survey: 6/07/2023

Record of Survey
LT 587696
Approved on: 1/11/2023