

Record of Survey - LT 588296

Survey Number LT 588296
Surveyor Reference 43199 - River Road
Surveyor Christopher Paul Hopper
Survey Firm Davis Ogilvie & Partners Ltd (Christchurch)
Surveyor Declaration I Christopher Paul Hopper, being a licensed cadastral surveyor, certify that--
 (a) this dataset provided by me and its related survey are accurate, correct and in accordance with the Cadastral Survey Act 2002 and Cadastral Survey Rules 2021; and
 (b) the survey was undertaken by me or under my personal direction.
 Declared on 01 Jun 2023 04:06 PM

Survey Details

Dataset Description LOTS 1 & 2 BEING A DEFINITION OF LOTS 1 & 2 DP 310927 AND DRY RIVER BED
Purpose LT Subdivision
Status Approved as to Survey **Type** Survey
Land District Canterbury **Survey Class** Class B
Meridional Circuit Amuri 2000 **Vertical Datum** None

Survey Dates

Surveyed Date 03/11/2022 **Certified Date** 01/06/2023
Submitted Date 01/06/2023 16:06:08 **Survey Approval Date** 06/06/2023
Deposit Date

Referenced Surveys

Survey Number	Land District	Bearing Correction
SO 19236	Canterbury	0°00'00"
SO 19299	Canterbury	0°00'00"
DP 310927	Canterbury	
LT 557579	Canterbury	0°00'00"
LT 337368	Canterbury	0°00'00"
SO 1501	Canterbury	0°00'00"
DP 300829	Canterbury	0°00'00"
LT 404089	Canterbury	0°00'00"
LT 403269	Canterbury	0°00'00"
DP 8392	Canterbury	0°00'00"
SO 668	Canterbury	0°00'00"
DP 21833	Canterbury	0°00'00"
SO 8322	Canterbury	0°00'00"
SO 8327	Canterbury	0°00'00"

Territorial Authorities

Hurunui District

Comprised In

RT 42998



Record of Survey - LT 588296

Created Parcels

Parcels	Parcel Intent	Area	RT Reference
Lot 1 Deposited Plan 588296	Fee Simple Title	55.8300 Ha	1118528
Lot 2 Deposited Plan 588296	Fee Simple Title	52.2100 Ha	1118528
	Hydro		
Total Area		<hr/> 108.0400 Ha	

Mark and Vector

Survey Number DP 588296

Meridional Circuit Amuri 2000

From	To	Code	Bearing	Adpt Surv	Bearing Correction	Distance	Adpt Surv	Class
IT B DP 588296	IS 3 DP 557579	ob0	177°43'40" M			626.19 M		
IT B DP 588296	IS 4 DP 557579	ob1	150°38'25" M			562.64 M		
IT B DP 588296	PEG (7) DP 310927	ob2	146°34'45" M			562.24 M		
IT B DP 588296	IT XII DP 310927	ob3	91°43'20" M			894.90 M		
IT B DP 588296	PEG (8) DP 310927	ob4	94°47'40" M			759.33 M		
IT B DP 588296	PEG (2) DP 310927	ob5	177°16'30" M			620.83 M		
IT B DP 588296	IT A DP 588296	ob6	214°01'50" M			633.28 M		
IT B DP 588296	PEG 8 DP 557579	ob7	226°51'30" M			123.67 M		
IT B DP 588296	PEG (3) DP 310927	ob8	227°09'40" M			72.69 M		
IT B DP 588296	IT XX DP 310927	ob9	293°16'50" M			344.86 M		
IT B DP 588296	IT 1 DP 557579	ob10	305°41'20" M			312.00 M		
IT B DP 588296	IT III SO 19236	ob11	52°08'50" M			1,048.78 M		
IT B DP 588296	IT VI SO 19236	ob12	61°20'16" M			1,454.84 M		
IT B DP 588296	IR XI DP 310927	ob13	109°22'20" M			596.46 M		
IT B DP 588296	PEG (1) DP 310927	ob14	109°25'15" M			598.44 M		
IT A DP 588296	IT VI SO 19236	ob29	53°08'36" M			2,038.34 M		
IT A DP 588296	PEG (6) DP 310927	ob30	11°30'15" M			237.45 M		
IT A DP 588296	IT C DP 588296	ob31	254°56'35" M			81.12 M		
IT A DP 588296	IT V SO 19299	ob32	58°31'52" M			2,259.75 M		
IT A DP 588296	IT V DP 310927	ob33	59°58'07" M			2,213.30 M		
IT 1 DP 557579	IT III SO 19236	ob39	66°53'20" M			1,175.88 M		
IT III SO 19236	IT VI SO 19236	ob41	83°06'15" M			451.73 M		
IT VI SO 19236	IT V SO 19299	ob44	98°14'50" M			299.51 M		
IT V SO 19299	IT V DP 310927	ob59	188°52'00" M			72.84 M		
IT V DP 310927	IT XII DP 310927	ob62	227°34'40" M			903.92 M		
IT XII DP 310927	IR XI DP 310927	ob24	242°44'40" M			373.26 M		
IR XI DP 310927	IS 4 DP 557579	ob50	224°26'20" M			409.69 M		
IS 4 DP 557579	IS 3 DP 557579	ob21	241°40'15" M			285.19 M		
IS 3 DP 557579	IT C DP 588296	ob18	279°53'35" M			464.47 M		
IT C DP 588296	IT XX DP 310927	ob54	9°38'50" M			691.98 M		
IT XX DP 310927	IT 1 DP 557579	ob36	54°12'00" M			78.16 M		
IT 1 DP 557579	18 (Lyndon SD)	ob40	62°06'40" A	LT 557579	0°00'00"	287.72 A	LT 557579	

Mark and Vector

Survey Number DP 588296

Meridional Circuit Amuri 2000

From	To	Code	Bearing	Adpt Surv	Bearing Correction	Distance	Adpt Surv	Class
18 (Lyndon SD)	IS 4 DP 557579	ob65	161°11'05"	A LT 557579	0°00'00"	852.52 A	LT 557579	
18 (Lyndon SD)	IS 2 DP 557579	ob66	107°25'10"	A LT 557579	0°00'00"	161.38 A	LT 557579	
IS 2 DP 557579	IT III DP 310927	ob67	76°59'30"	A LT 557579	0°00'00"	79.77 A	LT 557579	
IT III DP 310927	IT II DP 310927	ob68	62°36'50"	A LT 557579	0°00'00"	120.84 A	LT 557579	
IT II DP 310927	IT I DP 310927	ob72	61°19'05"	A LT 557579	0°00'00"	422.02 A	LT 557579	
IT I DP 310927	IT III SO 19236	ob74	49°56'40"	A LT 557579	0°00'00"	154.13 A	LT 557579	
IT III SO 19236	IT IV SO 19236	ob42	68°28'00"	A SO 19236	0°00'00"	193.43 A	SO 19236	
IT IV SO 19236	IS V SO 19236	ob76	58°29'50"	A SO 19236	0°00'00"	177.10 A	SO 19236	
IS V SO 19236	PEG II SO 8327	ob78	134°32'00"	A SO 19236	0°00'00"	69.57 A	SO 19236	
PEG II SO 8327	IT VI SO 19236	ob79	131°44'00"	A SO 19236	0°00'00"	91.10 A	SO 19236	
IT VI SO 19236	IT III SO 19299	ob45	186°07'00"	A SO 19299	0°00'00"	149.78 A	DP 310927	
IT III SO 19299	IT V SO 19299	ob81	71°14'50"	A SO 19299	0°00'00"	329.88 A	SO 19299	
IT VI SO 19236	IT C DP 588296	ob46	233°57'36"	M		2,113.89 M		
IT VI SO 19236	IT XXIII SO 19299	ob47	62°56'00"	A SO 19299	0°00'00"	174.78 A	SO 19299	
IT XXIII SO 19299	IT VII SO 19236	ob118	78°21'00"	A SO 19299	0°00'00"	241.50 A	SO 19299	
IT VII SO 19236	IT V SO 19299	ob122	209°14'00"	A SO 19299	0°00'00"	196.14 A	SO 19299	
IT V DP 310927	IR VI DP 310927	ob63	215°18'55"	A DP 310927	-0°02'35"	184.27 A	DP 310927	
IR VI DP 310927	IS VII DP 310927	ob82	234°18'15"	A DP 310927	-0°02'35"	265.24 A	DP 310927	
IS VII DP 310927	IS XIII DP 310927	ob84	227°14'05"	A DP 310927	-0°02'35"	226.13 A	DP 310927	
IS XIII DP 310927	IT XII DP 310927	ob88	229°52'25"	A DP 310927	-0°02'35"	234.77 A	DP 310927	
IS 3 DP 557579	IT VIII DP 310927	ob19	253°07'55"	A DP 310927	-0°02'15"	401.86 A	DP 310927	
IT VIII DP 310927	IT C DP 588296	ob91	339°36'30"	A DP 310927	-0°02'15"	209.55 A	DP 310927	
IT C DP 588296	IT III DP 310927	ob55	38°38'34"	A LT 557579	0°00'00"	1,065.45 A	LT 557579	
IT C DP 588296	IT XIV DP 310927	ob56	22°53'55"	A DP 310927	-0°02'15"	248.56 A	DP 310927	
IT XIV DP 310927	IT XV DP 310927	ob94	67°05'35"	A DP 310927	-0°02'15"	211.42 A	DP 310927	
IT XV DP 310927	IR XVI DP 310927	ob98	23°06'05"	A DP 310927	-0°02'15"	157.33 A	DP 310927	
IR XVI DP 310927	IR XVII DP 310927	ob99	153°19'05"	A DP 310927	-0°02'15"	127.97 A	DP 310927	
IR XVII DP 310927	IT XVIII DP 310927	ob104	188°58'15"	A DP 310927	-0°02'15"	206.30 A	DP 310927	
IT XVIII DP 310927	IS 3 DP 557579	ob105	160°01'45"	A DP 310927	-0°02'15"	231.60 A	DP 310927	
IT XX DP 310927	PEG (3) DP 310927	ob37	125°10'50"	A LT 557579	0°00'00"	322.36 A	LT 557579	
IT XX DP 310927	PEG 8 DP 557579	ob38	134°16'20"	A LT 557579	0°00'00"	316.42 A	LT 557579	

Mark and Vector

Survey Number DP 588296

Meridional Circuit Amuri 2000

From	To	Code	Bearing	Adpt Surv	Bearing Correction	Distance	Adpt Surv	Class
PEG 8 DP 557579	PEG (4) DP 310927	ob34	216°42'00"	C		0.21 C		
PEG (4) DP 310927	IR XVI DP 310927	ob106	115°36'45"	A DP 310927	-0°02'15"	11.98 A DP 310927		
IR XVI DP 310927	PEG (3) DP 310927	ob100	32°52'45"	A DP 310927	-0°02'15"	48.41 A DP 310927		
IT III DP 310927	PEG 6 DP 557579	ob69	202°23'00"	A DP 310927	0°00'00"	109.72 A DP 310927		
IT III DP 310927	PEG (10) DP 310927	ob70	170°06'00"	A DP 310927	0°00'00"	34.70 A DP 310927		
IT II DP 310927	PEG (11) DP 310927	ob73	145°24'00"	A DP 310927	0°00'00"	7.83 A DP 310927		
IT I DP 310927	PEG (14) DP 310927	ob75	168°05'00"	A DP 310927	0°00'00"	3.31 A DP 310927		
IT III SO 19236	PEG (3) SO 19236	ob43	357°40'00"	A SO 19236	0°00'00"	6.73 A SO 19236		
IT IV SO 19236	PEG (1) SO 19236	ob77	115°29'00"	A SO 19236	0°00'00"	42.87 A SO 19236		
PEG II SO 8327	PEG (2) SO 19236	ob80	206°22'00"	A SO 19236	0°00'00"	6.48 A SO 19236		
IT VI SO 19236	PEG (6) SO 19299	ob48	236°16'00"	A SO 19299	0°00'00"	66.35 A SO 19299		
IT VI SO 19236	PEG (5) SO 19299	ob49	187°20'00"	A SO 19299	0°00'00"	30.09 A SO 19299		
IT XXIII SO 19299	PEG (3) SO 19299	ob119	200°36'00"	A SO 19299	0°00'00"	51.67 A SO 19299		
IT XXIII SO 19299	PEG (7) SO 19299	ob120	131°03'00"	A SO 19299	0°00'00"	54.14 A SO 19299		
IT XXIII SO 19299	PEG (1) SO 19299	ob121	123°38'00"	A SO 19299	0°00'00"	83.59 A SO 19299		
IT V SO 19299	PEG (2) SO 19299	ob60	336°59'00"	A SO 19299	0°00'00"	53.99 A SO 19299		
IT V SO 19299	PEG (4) SO 19299	ob61	100°58'00"	A SO 19299	0°00'00"	21.84 A SO 19299		
IT V DP 310927	PEG (20) DP 310927	ob64	85°38'25"	A DP 310927	-0°02'35"	3.93 A DP 310927		
IR VI DP 310927	PEG (18) DP 310927	ob83	294°45'25"	A DP 310927	-0°02'35"	14.89 A DP 310927		
IS VII DP 310927	PEG (17) DP 310927	ob85	155°47'25"	A DP 310927	-0°02'35"	3.33 A DP 310927		
IS VII DP 310927	PEG (9) DP 310927	ob86	249°20'25"	A DP 310927	-0°02'35"	44.66 A DP 310927		
IS VII DP 310927	UNMK DP 310927	ob87	246°08'25"	A DP 310927	-0°02'35"	52.04 A DP 310927		
IS XIII DP 310927	PEG (13) DP 310927	ob89	298°18'25"	A DP 310927	-0°02'35"	19.26 A DP 310927		
IT XII DP 310927	PEG (15) DP 310927	ob25	10°37'25"	A DP 310927	-0°02'35"	67.05 A DP 310927		

Mark and Vector

Survey Number DP 588296

Meridional Circuit Amuri 2000

From	To	Code	Bearing	Adpt Surv	Bearing Correction	Distance	Adpt Surv	Class
IT XII DP 310927	PEG (8) DP 310927	ob26	255°07'25"	A DP 310927	-0°02'35"	142.63 A	DP 310927	
IR XI DP 310927	PEG (1) DP 310927	ob51	122°40'25"	A DP 310927	0°02'35"	2.08 A	DP 310927	
IS 4 DP 557579	PEG (7) DP 310927	ob22	58°08'25"	A DP 310927	-0°02'35"	39.86 A	DP 310927	
IS 3 DP 557579	PEG (2) DP 310927	ob20	39°36'45"	A DP 310927	-0°02'15"	7.33 A	DP 310927	
IT VIII DP 310927	PEG (16) DP 310927	ob92	72°23'15"	A DP 310927	-0°02'15"	211.18 A	DP 310927	
IT VIII DP 310927	PEG (12) DP 310927	ob93	313°53'45"	A DP 310927	-0°02'15"	110.61 A	DP 310927	
IT C DP 588296	PEG (19) DP 310927	ob57	51°31'45"	A DP 310927	-0°02'15"	14.63 A	DP 310927	
IT C DP 588296	UNMK (2) DP 310927	ob58	45°35'45"	A DP 310927	-0°02'15"	18.58 A	DP 310927	
IT XIV DP 310927	PEG (5) DP 310927	ob95	194°48'45"	A DP 310927	-0°02'15"	88.74 A	DP 310927	
IT XIV DP 310927	UNMK (1) DP 310927	ob96	194°51'45"	A DP 310927	-0°02'15"	89.23 A	DP 310927	
IT XIV DP 310927	PEG (6) DP 310927	ob97	49°24'45"	A DP 310927	-0°02'15"	38.06 A	DP 310927	
PEG (3) DP 310927	PEG 6 DP 557579	ob35	46°11'20"	A LT 557579	0°00'00"	338.32 A	LT 557579	Class B
PEG (162) DP 310927	PEG (10) DP 310927	ob145	35°22'00"	A DP 310927	0°00'00"	16.29 A	DP 310927	Class B
PEG (10) DP 310927	PEG (11) DP 310927	ob110	51°46'00"	A LT 557579	0°00'00"	134.67 A	DP 310927	Class B
PEG (11) DP 310927	PEG (14) DP 310927	ob111	60°41'30"	A DP 310927	0°00'00"	420.25 A	DP 310927	Class B
PEG (14) DP 310927	PEG (3) SO 19236	ob112	46°59'40"	A LT 557579	0°00'00"	160.02 A	LT 557579	Class B
PEG (3) SO 19236	PEG (1) SO 19236	ob113	78°10'30"	A SO 19236	0°00'00"	223.65 A	SO 19236	Class B
PEG (1) SO 19236	PEG (2) SO 19236	ob114	70°28'30"	A SO 19236	0°00'00"	168.72 A	SO 19236	Class B
PEG (2) SO 19236	PEG (6) SO 19299	ob115	170°17'30"	A SO 19299	0°00'00"	93.01 A	SO 19299	Class B
PEG (6) SO 19299	PEG (5) SO 19299	ob116	82°14'00"	A SO 19299	0°00'00"	51.81 A	SO 19299	Class B
PEG (5) SO 19299	PEG (3) SO 19299	ob117	66°39'00"	A SO 19299	0°00'00"	153.91 A	SO 19299	Class B
PEG (3) SO 19299	PEG (7) SO 19299	ob123	77°45'00"	A SO 19299	0°00'00"	60.38 A	SO 19299	Class B
PEG (7) SO 19299	PEG (1) SO 19299	ob124	110°29'00"	A SO 19299	0°00'00"	30.71 A	SO 19299	Class B
PEG (1) SO 19299	PEG (2) SO 19299	ob125	117°49'00"	A SO 19299	0°00'00"	56.61 A	SO 19299	Class B

Mark and Vector

Survey Number DP 588296

Meridional Circuit Amuri 2000

From	To	Code	Bearing	Adpt Surv	Bearing Correction	Distance	Adpt Surv	Class
PEG (2) SO 19299	PEG (4) SO 19299	ob126	141°41'00"	A SO 19299	0°00'00"	68.63 A	SO 19299	Class B
PEG (4) SO 19299	PEG (20) DP 310927	ob127	203°04'00"	C		73.38 C		Class B
PEG (20) DP 310927	PEG (18) DP 310927	ob128	220°38'25"	A DP 310927	-0°02'35"	190.33 A	DP 310927	Class B
PEG (18) DP 310927	PEG (17) DP 310927	ob129	230°42'55"	A DP 310927	-0°02'35"	259.07 A	DP 310927	Class B
PEG (17) DP 310927	PEG (9) DP 310927	ob130	253°34'25"	A DP 310927	-0°02'35"	44.98 A	DP 310927	Class B
PEG (9) DP 310927	UNMK DP 310927	ob138	227°39'25"	A DP 310927	-0°02'35"	7.90 A	DP 310927	Class BD
UNMK DP 310927	UNMK 73 DP 588296	ob139	227°39'25"	C		19.97 C		
UNMK 73 DP 588296	PEG 1 DP 588296	ob141	227°39'25"	C		7.13 C		Class BD
PEG 1 DP 588296	UNMK (163) DP 310927	ob140	227°39'25"	C		149.00 C		Class B
PEG (13) DP 310927	PEG (15) DP 310927	ob131	237°48'25"	A DP 310927	-0°02'35"	177.45 A	DP 310927	Class B
PEG (15) DP 310927	PEG (8) DP 310927	ob132	235°41'25"	A DP 310927	-0°02'35"	181.87 A	DP 310927	Class B
PEG (8) DP 310927	PEG (1) DP 310927	ob27	234°49'40"	A DP 310927	-0°02'35"	235.11 A	DP 310927	Class B
PEG (1) DP 310927	PEG (7) DP 310927	ob52	223°17'45"	A DP 310927	-0°02'35"	371.47 A	DP 310927	Class B
PEG (7) DP 310927	PEG (2) DP 310927	ob23	241°42'25"	A DP 310927	-0°02'15"	318.19 A	DP 310927	Class B
PEG (2) DP 310927	PEG (16) DP 310927	ob28	252°45'15"	A DP 310927	-0°02'15"	196.83 A	DP 310927	Class B
PEG (16) DP 310927	PEG (12) DP 310927	ob133	272°36'25"	A DP 310927	-0°02'15"	281.29 A	DP 310927	Class B
PEG (12) DP 310927	PEG (19) DP 310927	ob134	8°00'45"	A DP 310927	-0°02'35"	130.10 A	DP 310927	Class B
PEG (19) DP 310927	UNMK (2) DP 310927	ob135	25°00'45"	A DP 310927	-0°02'15"	4.30 A	DP 310927	Class BD
UNMK (1) DP 310927	PEG (5) DP 310927	ob137	25°00'45"	A DP 310927	-0°02'15"	0.50 A	DP 310927	Class BD
PEG (5) DP 310927	PEG (6) DP 310927	ob136	25°00'45"	A DP 310927	-0°02'15"	122.00 A	DP 310927	Class B
PEG (6) DP 310927	PEG (4) DP 310927	ob53	46°15'45"	A DP 310927	-0°02'15"	300.02 A	DP 310927	Class B
PEG (4) DP 310927	UNMK (3) DP 310927	ob107	46°15'45"	A DP 310927	-0°02'15"	1.00 A	DP 310927	Class BD
UNMK (3) DP 310927	UNMK 74 DP 588296	ob109	46°16'00"	C		16.72 C		
UNMK 74 DP 588296	UNMK (160) DP 310927	ob142	46°16'00"	C		10.86 C		Class BD

Mark and Vector

Survey Number DP 588296

Meridional Circuit Amuri 2000

From	To	Code	Bearing	Adpt Surv	Bearing Correction	Distance	Adpt Surv	Class
IT B DP 588296	PEG 1 DP 588296	ob15	78°29'54"	M		1,196.33	M	
IT B DP 588296	UNMK 73 DP 588296	ob16	78°19'27"	C		1,202.45	C	
IR XVI DP 310927	UNMK (3) DP 310927	ob101	300°12'45"	A DP 310927	-0°02'15"	11.66	A DP 310927	
IR XVI DP 310927	UNMK (160) DP 310927	ob102	21°33'45"	A DP 310927	-0°02'15"	26.81	A DP 310927	
IR XVI DP 310927	PEG (161) DP 310927	ob103	23°13'45"	A DP 310927	-0°02'15"	28.64	A DP 310927	
IT III DP 310927	PEG (162) DP 310927	ob71	184°11'00"	A DP 310927	0°00'00"	47.60	A DP 310927	
IS XIII DP 310927	UNMK (163) DP 310927	ob90	319°33'25"	A DP 310927	-0°02'35"	18.18	A DP 310927	
PEG 6 DP 557579	PEG (162) DP 310927	ob108	35°22'00"	A DP 310927	0°00'00"	66.21	A DP 310927	Class B
UNMK (163) DP 310927	PEG (13) DP 310927	ob146	227°39'25"	A DP 310927	-0°02'35"	7.00	A DP 310927	Class B
UNMK (160) DP 310927	PEG (161) DP 310927	ob143	46°15'45"	A DP 310927	-0°02'15"	2.00	A DP 310927	Class B
PEG (161) DP 310927	PEG (3) DP 310927	ob144	46°15'45"	A DP 310927	-0°02'15"	20.74	A DP 310927	Class B
IT B DP 588296	PEG (16) DP 310927	ob17	193°08'50"	M		696.73	M	

Mark Name	Mark Condition	Description
IR XI DP 310927		Fl.
IS 3 DP 557579		0.2d
IS 4 DP 557579		0.1d
IT 1 DP 557579		0.1d
IT A DP 588296		0.3d
IT B DP 588296		Fl. 1m to post and wire fence
IT C DP 588296		IT IV DP 310927 renewed (now gone)
IT III SO 19236		0.3d
IT V DP 310927		0.2d
IT V SO 19299		0.1d
IT VI SO 19236		0.3d
IT XII DP 310927		Fl.
IT XX DP 310927		0.1d
PEG 1 DP 588296		0.2d
IR VI DP 310927	Searched For and Not Found	
IR XVI DP 310927	Searched For and Not Found	

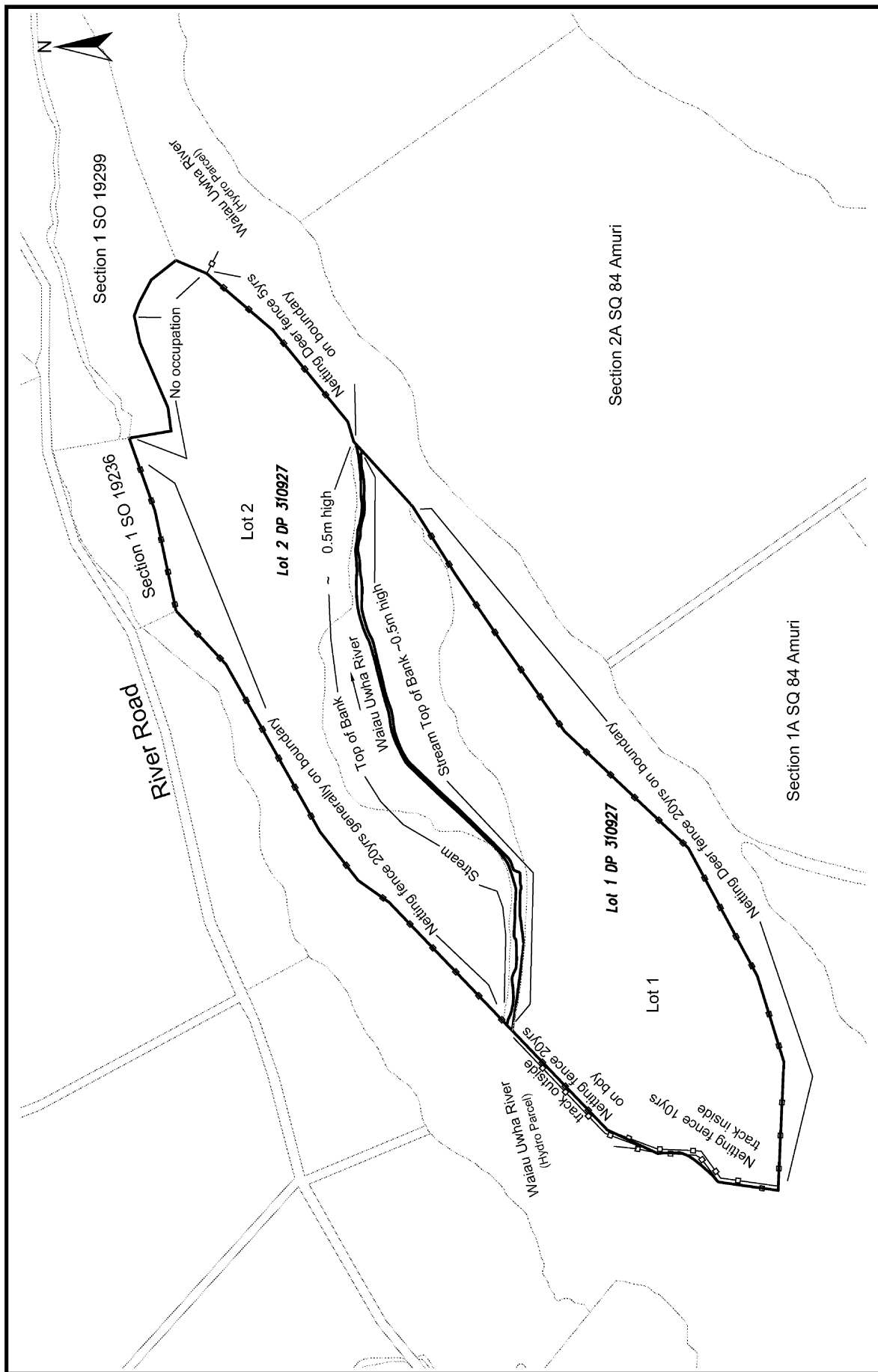
Mark and Vector

Survey Number DP 588296

Meridional Circuit Amuri 2000

Mark Name	Mark Condition	Description
IR XVII DP 310927	Searched For and Not Found	
IS VII DP 310927	Searched For and Not Found	d 0.2
IS XIII DP 310927	Searched For and Not Found	d 0.1
IT VIII DP 310927	Searched For and Not Found	
IT XIV DP 310927	Searched For and Not Found	
IT XV DP 310927	Searched For and Not Found	

*** End of Report ***



DP 588296
Sheet 1 of 1

date 02/23
job no. 43199

OCCUPATION DIAGRAM

Davis Ogilvie Ph. 03 366-1663
Engineering - Surveying - Planning
100-102, The Arcade, 100-102, The Arcade
Christchurch, New Zealand
P.O. Box 388 Christchurch 8140
New Zealand
New Zealand - Christchurch





Section 1 SO 19236

Section 1 SO 19236

Section 1 SO 19236

Section 1 SO 19236

Section 1 SO 19236



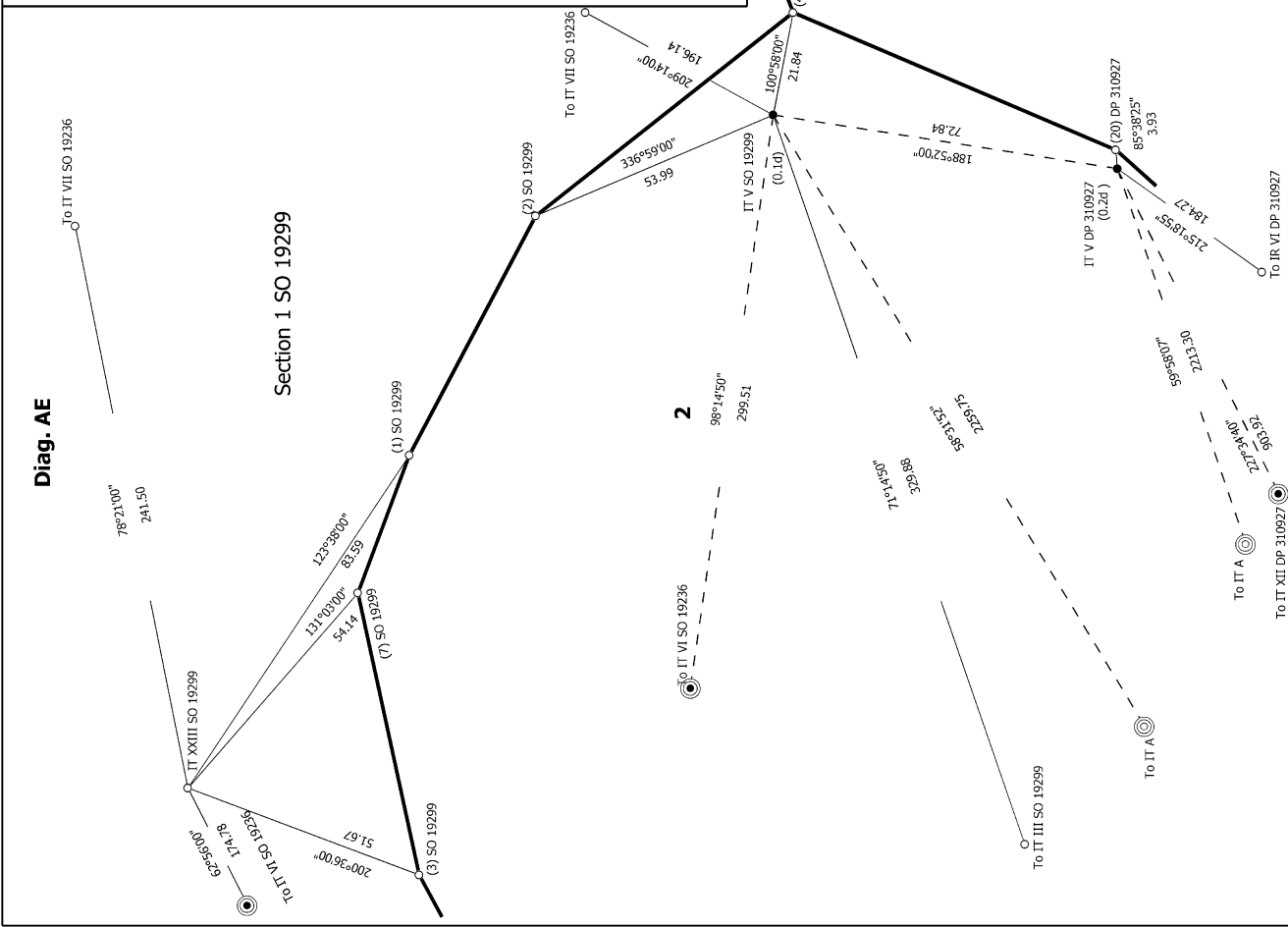
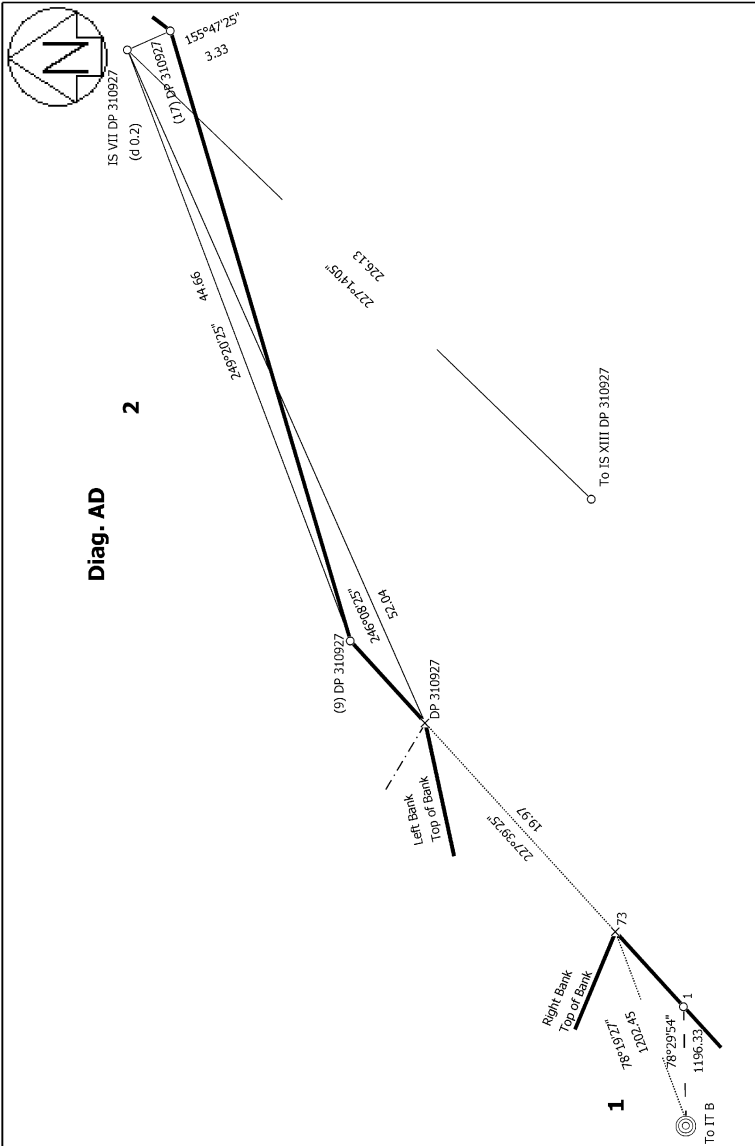
S 1/4

Land District: Canterbury
 Digitally Generated Plan
 Generated on: 06/06/2023 10:46am Page 11 of 16

LOTS 1 & 2 BEING A DEFINITION OF LOTS 1 & 2 DP 310927 AND DRY RIVER BED

Surveyor: Christopher Paul Hopper
 Firm: Davis Ogilvie & Partners Ltd (Christchurch)
 Date of Survey: 3/11/2022

Record of Survey
 LT 588296
 Approved on: 6/06/2023



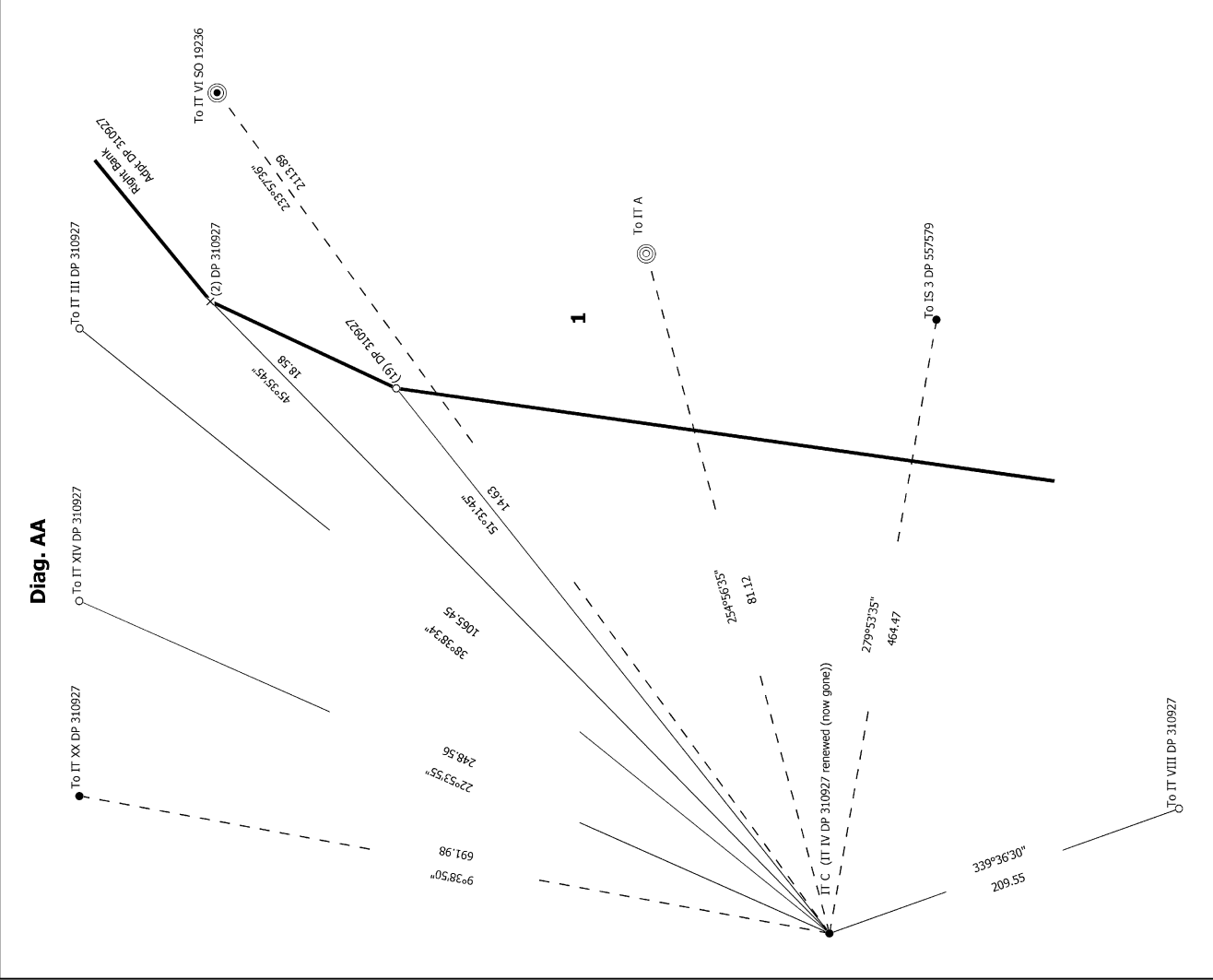
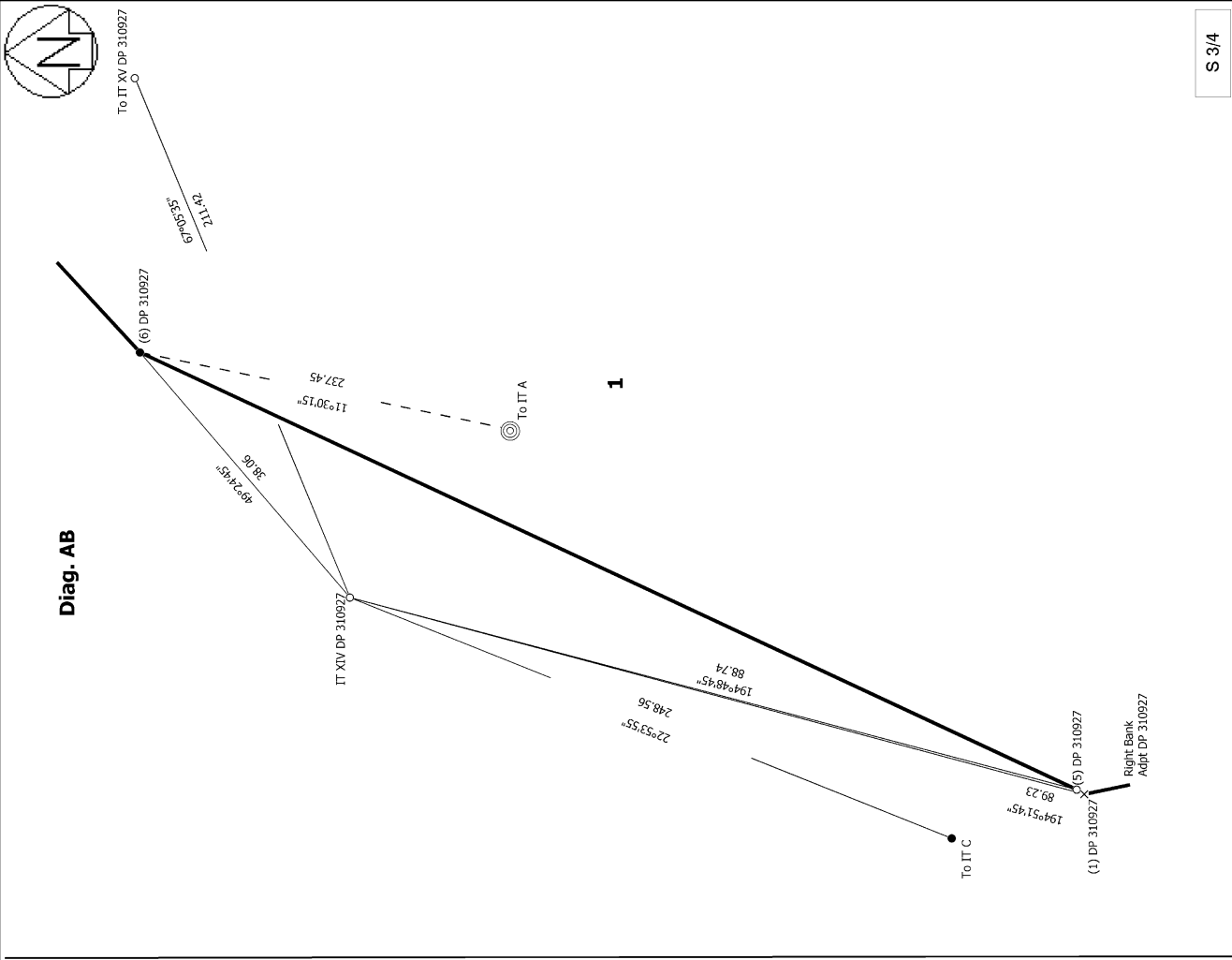
S 2/4

Record of Survey
 LT 588296
 Approved on: 6/06/2023

Surveyor: Christopher Paul Hopper
 Firm: Davis Ogilvie & Partners Ltd (Christcl
 Date of Survey: 3/11/2022

LOTS 1 & 2 BEING A DEFINITION OF LOTS 1 & 2 DP 310927 AND DRY RIVER BED

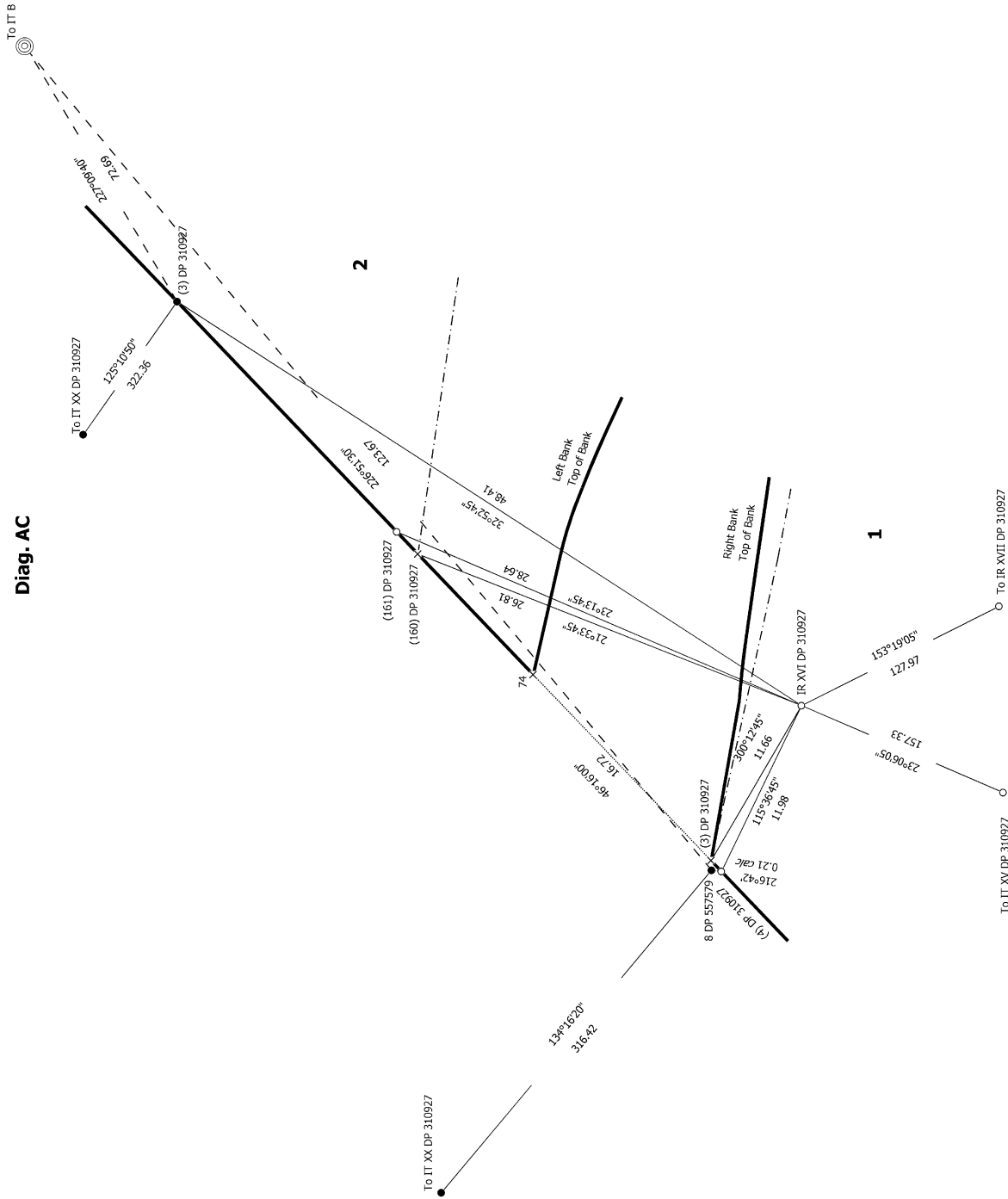
Land District: Canterbury
 Digitally Generated Plan
 Generated on: 06/06/2023 10:46am Page 12 of 16



<p>Land District: Canterbury</p> <p>Digitally Generated Plan</p> <p>Generated on: 06/06/2023 10:46am Page 13 of 16</p>	<p>LOTS 1 & 2 BEING A DEFINITION OF LOTS 1 & 2 DP 310927 AND DRY RIVER BED</p>	<p>Surveyor: Christopher Paul Hopper</p> <p>Firm: Davis Ogilvie & Partners Ltd (Christchurch)</p> <p>Date of Survey: 3/11/2022</p>	<p>Record of Survey</p> <p>LT 588296</p> <p>Approved on: 6/06/2023</p>
---	--	--	--



Diag. AC



Land District: Canterbury

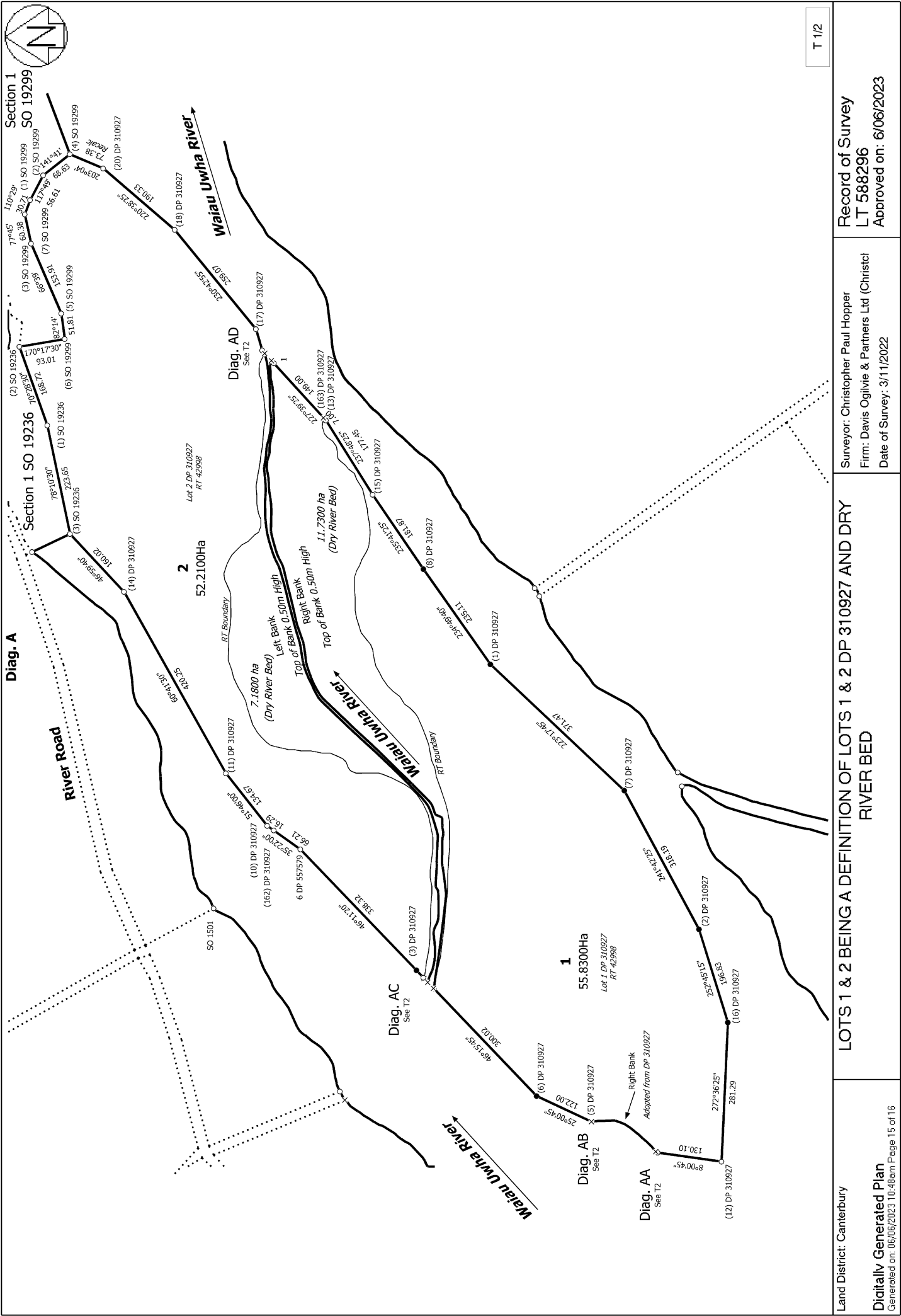
Digitally Generated Plan

Generated on: 06/06/2023 10:46am | Page 14 of 16

LOTS 1 & 2 BEING A DEFINITION OF LOTS 1 & 2 DP 310927 AND DRY RIVER BED

Surveyor: Christopher Paul Hopper
Firm: Davis Ogilvie & Partners Ltd (Christch)
Date of Survey: 3/11/2022

Record of Survey
LT 588296
Approved on: 6/06/2023



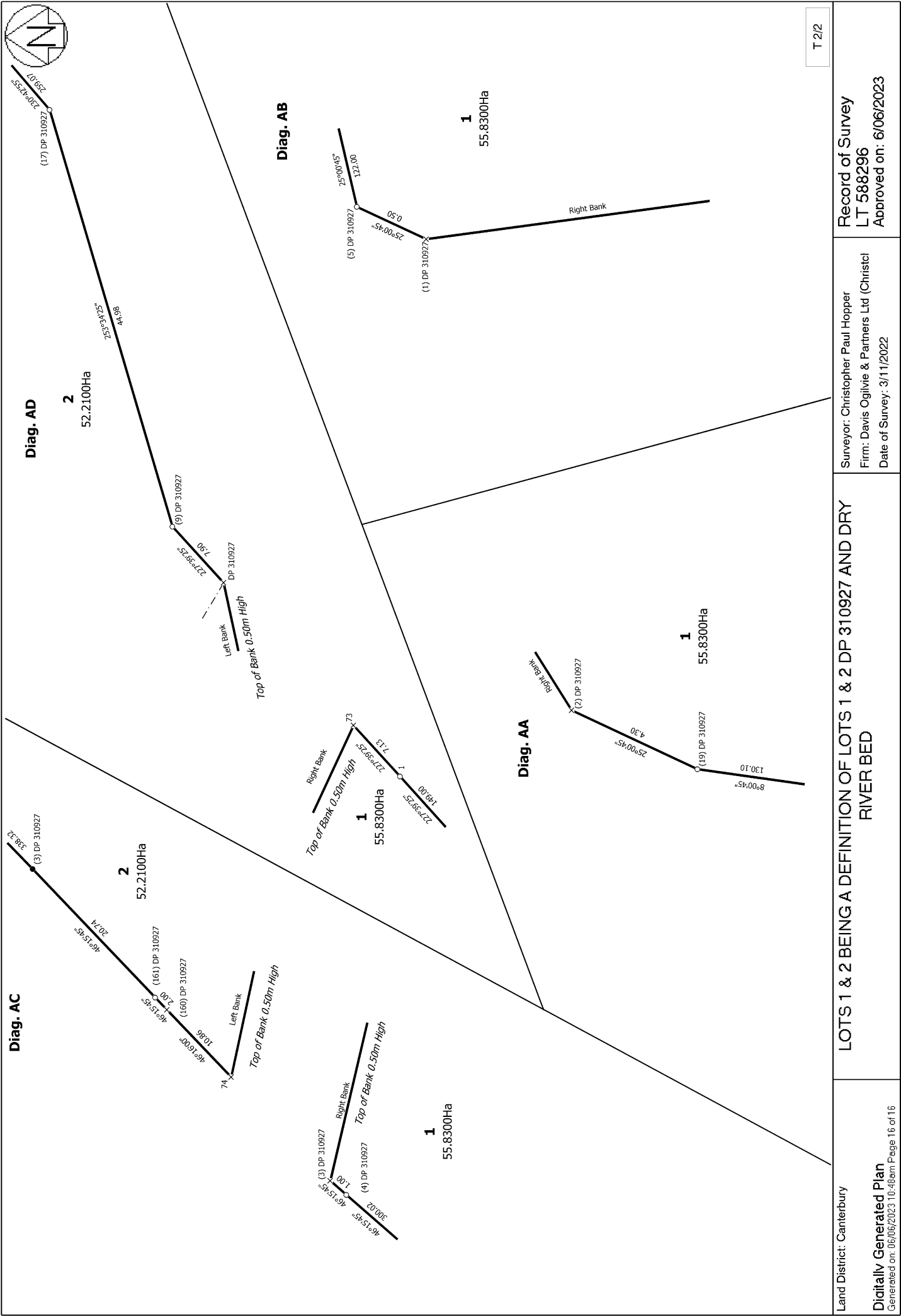
T 1/2

Land District: Canterbury
Digitally Generated Plan
Generated on: 06/06/2023 10:46am Page 15 of 16

Record of Survey
LT 588296
Approved on: 6/06/2023

Surveyor: Christopher Paul Hopper
Firm: Davis Ogilvie & Partners Ltd (Christchurch)
Date of Survey: 3/11/2022

LOTS 1 & 2 BEING A DEFINITION OF LOTS 1 & 2 DP 310927 AND DRY RIVER BED



T 2/2

<p>Land District: Canterbury</p> <p>Digitally Generated Plan</p> <p>Generated on: 06/06/2023 10:46am Page 16 of 16</p>	<p>LOTS 1 & 2 BEING A DEFINITION OF LOTS 1 & 2 DP 310927 AND DRY RIVER BED</p>	<p>Surveyor: Christopher Paul Hopper</p> <p>Firm: Davis Ogilvie & Partners Ltd (Christcl)</p> <p>Date of Survey: 3/11/2022</p>	<p>Record of Survey LT 588296</p> <p>Approved on: 6/06/2023</p>
---	---	--	---