



# Record of Survey - LT 613826

---

**Survey Number** LT 613826  
**Surveyor Reference** 34447 - 34134 - 126 Lauriston Barrhill Road  
**Surveyor** Rita Winifred Dobbie Clark  
**Survey Firm** Envivo Limited  
**Surveyor Declaration** I Rita Winifred Dobbie Clark, being a licensed cadastral surveyor, certify that--  
(a) this dataset provided by me and its related survey are accurate, correct and in accordance with the Cadastral Survey Act 2002 and Cadastral Survey Rules 2021; and  
(b) the survey was undertaken by me or under my personal direction.  
Declared on 18 Feb 2026 08:18 AM

---

## Survey Details

**Dataset Description** Lease Areas over Lot 2 DP 56381 & RS 38614  
**Purpose** Lease  
**Status** Approved as to Survey **Type** Survey  
**Land District** Canterbury **Survey Class** Class B  
**Meridional Circuit** Gawler 2000 **Vertical Datum** None

---

## Survey Dates

**Surveyed Date** 03/02/2025 **Certified Date** 18/02/2026  
**Submitted Date** 18/02/2026 08:18:43 **Survey Approval Date** 18/02/2026  
**Deposit Date**

---

## Referenced Surveys

Survey Number	Land District	Bearing Correction
DP 348146	Canterbury	0°00'00"
DP 4348	Canterbury	0°00'00"
DP 5359	Canterbury	0°00'00"
DP 56381	Canterbury	0°00'00"
DP 7375	Canterbury	0°00'00"
SO 10357	Canterbury	0°00'00"
SO 9680	Canterbury	0°00'00"
DP 584114	Canterbury	0°00'00"
DP 599325	Canterbury	0°00'00"
SO 7414	Canterbury	0°00'00"

---

## Territorial Authorities

Ashburton District

---

## Comprised In

RT 1165524  
RT CB25A/963  
RT CB33F/115

---



# Record of Survey - LT 613826

---

## Created Parcels

Parcels	Parcel Intent	Area	RT Reference
Area 2 Deposited Plan 613826	Lease	32.3318 Ha	
Area 1 Deposited Plan 613826	Lease	62.3667 Ha	
<b>Total Area</b>		<u>94.6985 Ha</u>	

# Mark and Vector

Survey Number DP 613826  
Meridional Circuit Gawler 2000

From	To	Code	Bearing	Adpt Surv	Bearing Correction	Distance	Adpt Surv	Class
IT VII DP 348146	IT I SO 10357	ob0	221°39'20"	M		888.36 M		
IT I SO 10357	IT (6) SO 10357	ob2	221°39'20"	M		457.49 M		
IT VIII SO 10357	IT VII SO 10357	ob6	222°25'10"	M		844.16 M		
IT VII SO 10357	IT (6) SO 10357	ob8	275°41'40"	M		766.58 M		
IS (1) DP 5359	IT (2) SO 10357	ob10	221°31'20"	A DP 584114	0°00'00"	309.06 A DP 584114		
IT (2) SO 10357	IT XII SO 10357	ob11	221°39'20"	A SO 10357	0°00'00"	260.98 A SO 10357		
IT XII SO 10357	IT VII DP 348146	ob12	221°39'20"	A DP 348146	0°00'00"	21.66 A DP 348146		
IT VII DP 348146	IS IX SO 10357	ob1	221°39'20"	A DP 348146	0°00'00"	38.34 C		
IS IX SO 10357	IT SO 10357	ob13	221°39'20"	A DP 348146	0°00'00"	20.12 A SO 10357		
IT SO 10357	IT III SO 10357	ob14	131°18'40"	A SO 10357	0°00'00"	324.69 A SO 10357		
IT III SO 10357	IT VIII SO 10357	ob70	130°44'00"	A SO 10357	0°00'00"	307.10 A SO 10357		
IT VII SO 10357	IR I DP 56381	ob9	312°20'00"	A DP 56381	0°00'00"	12.93 A DP 56381		
IR I DP 56381	IT VI SO 10357	ob15	312°20'00"	A DP 56381	0°00'00"	376.17 A DP 56381		
IT VI SO 10357	IT I SO 10357	ob16	312°20'00"	A SO 10357	0°00'00"	231.38 A SO 10357		
IT VIII SO 10357	PEG I DP 5359	ob7	210°33'00"	A SO 10357	0°00'00"	6.98 A SO 10357		
PEG I DP 5359	PEG (1) SO 10357	ob27	53°15'00"	A DP 5359	0°00'00"	10.26 A DP 5359		
PEG (1) SO 10357	PEG 3 DP 613826	ob28	222°24'20"	A DP 56381	0°00'00"	401.75 A DP 599325		Class B
PEG 3 DP 613826	PEG (4) DP 5359	ob30	222°24'20"	A DP 56381	0°00'00"	439.49 A DP 599325		
PEG (4) DP 5359	PEG (3) DP 5359	ob31	303°30'00"	A SO 10357	0°00'00"	18.77 A SO 10357		
PEG (3) DP 5359	PEG (2) DP 56381	ob32	312°19'30"	A DP 56381	0°00'00"	367.03 A DP 56381		
PEG (2) DP 56381	PEG (1) DP 56381	ob33	270°03'00"	A DP 56381	0°00'00"	14.87 A DP 56381		
PEG (1) DP 56381	PEG (5) DP 56381	ob34	312°19'30"	A DP 56381	0°00'00"	212.34 A DP 56381		
PEG (5) DP 56381	IT I SO 10357	ob35	336°32'00"	A DP 56381	0°00'00"	16.64 A DP 56381		
PEG (1) SO 10357	PEG (2) DP 4348	ob29	131°39'20"	A DP 56381	0°00'00"	807.05 A DP 56381		Class B
PEG (2) DP 4348	PEG 4 DP 613826	ob36	221°36'00"	A DP 4348	0°00'00"	410.77 A DP 599325		Class B
PEG 4 DP 613826	PEG (3) DP 4348	ob37	221°36'00"	A DP 4348	0°00'00"	433.91 A DP 599325		
PEG (3) DP 4348	PEG 28 DP 613826	ob38	311°42'00"	A DP 4348	0°00'00"	422.04 A DP 599325		
PEG 28 DP 613826	IS 29 DP 613826	ob39	311°42'00"	A DP 4348	0°00'00"	0.90 A DP 599325		Class B

# Mark and Vector

Survey Number DP 613826  
Meridional Circuit Gawler 2000

From	To	Code	Bearing	Adpt Surv	Bearing Correction	Distance	Adpt Surv	Class
IS 29 DP 613826	PEG (1) DP 5359	ob41	221°41'00"	A DP 5359	0°00'00"	454.02	A DP 599325	Class B
PEG (1) DP 5359	PEG (2) DP 5359	ob42	311°38'15"	A DP 56381	0°00'00"	1,004.73	A DP 56381	Class B
PEG (2) DP 5359	UNMK 16 DP 56381	ob44	41°39'20"	A SO 9680	0°00'00"	300.34	A DP 599325	Class B
UNMK 16 DP 56381	PEG (5) DP 56381	ob45	41°39'20"	A SO 9680	0°00'00"	151.46	A DP 599325	
PEG (1) DP 5359	PEG (2) DP 7375	ob43	221°39'20"	A DP 599325	0°00'00"	323.22	A DP 7375	Class B
PEG (2) DP 7375	PEG (36) DP 7375	ob47	311°47'16"	A DP 599325	0°00'00"	1,004.75	A DP 7375	Class B
PEG (36) DP 7375	PEG (2) DP 5359	ob48	41°39'20"	A DP 7375	0°00'00"	320.58	A DP 7375	Class B
IT (6) SO 10357	IS 15 DP 613826	ob5	107°01'30"	M		643.05	M	
IS 15 DP 613826	IT 605 DP 613826	ob17	107°33'30"	M		932.26	M	
IT 605 DP 613826	IT 601 DP 613826	ob24	41°16'00"	M		224.80	M	
IT 601 DP 613826	IT VIII SO 10357	ob49	339°20'00"	M		905.98	M	
IT 605 DP 613826	IT 38 DP 613826	ob25	328°47'30"	M		435.89	M	
IT 38 DP 613826	IT VII SO 10357	ob51	272°17'45"	M		515.46	M	
IT 605 DP 613826	IS 49 DP 613826	ob26	1°47'00"	M		301.97	M	
IS 49 DP 613826	IT 38 DP 613826	ob71	286°47'30"	M		245.73	M	
IS 49 DP 613826	IT 601 DP 613826	ob72	133°44'00"	M		192.19	M	
UNMK 16 DP 56381	PEG 39 DP 613826	ob46	131°49'00"	A DP 599325	0°00'00"	1.50	C	Class B
PEG 39 DP 613826	PEG 40 DP 613826	ob60	131°49'00"	A DP 599325	0°00'00"	497.92	C	Class B
PEG 40 DP 613826	DISK 41 DP 613826	ob61	222°00'00"	A DP 599325	0°00'00"	32.00	A DP 599325	Class B
DISK 41 DP 613826	PEG 42 DP 613826	ob62	132°15'00"	A DP 599325	0°00'00"	243.62	A DP 599325	Class B
PEG 42 DP 613826	IS 43 DP 613826	ob63	42°00'00"	A DP 599325	0°00'00"	32.00	A DP 599325	Class B
IS 43 DP 613826	DISK 44 DP 613826	ob64	131°49'30"	A DP 599325	0°00'00"	256.70	A DP 599325	Class B
DISK 44 DP 613826	IS 45 DP 613826	ob65	41°43'20"	A DP 599325	0°00'00"	158.61	A DP 599325	Class B
IS 45 DP 613826	IS 46 DP 613826	ob66	41°12'20"	A DP 599325	0°00'00"	238.42	A DP 599325	Class B
IS 46 DP 613826	PEG 47 DP 613826	ob67	41°34'40"	A DP 599325	0°00'00"	202.67	A DP 599325	Class B
IS 48 DP 613826	PEG 4 DP 613826	ob69	132°10'35"	A DP 599325	0°00'00"	423.73	A DP 599325	Class B
PEG 47 DP 613826	PEG 3 DP 613826	ob68	311°54'00"	A DP 599325	0°00'00"	382.97	A DP 599325	Class B

# Mark and Vector

Survey Number DP 613826  
Meridional Circuit Gawler 2000

From	To	Code	Bearing	Adpt Surv	Bearing Correction	Distance	Adpt Surv	Class
IT 38 DP 613826	PEG 47 DP 613826	ob52	38°38'00"	M		117.17 M		
IT 38 DP 613826	IS 48 DP 613826	ob53	41°34'40"	M		113.43 M		
IT 601 DP 613826	PEG 4 DP 613826	ob50	74°27'00"	M		15.76 M		
PEG 28 DP 613826	IS 50 DP 613826	ob40	41°12'00"	A DP 599325	0°00'00"	238.50 A	DP 599325	Class B
IS 50 DP 613826	IS 48 DP 613826	ob73	41°36'00"	A DP 599325	0°00'00"	198.95 A	DP 599325	Class B
IS 15 DP 613826	PEG 40 DP 613826	ob18	334°35'40"	M		76.03 M		
IS 15 DP 613826	DISK 41 DP 613826	ob19	309°43'40"	M		70.25 M		
IS 15 DP 613826	IS 43 DP 613826	ob20	122°46'40"	M		175.69 M		
IS 15 DP 613826	PEG 42 DP 613826	ob21	133°16'10"	M		173.46 M		
IS 15 DP 613826	IT VII SO 10357	ob22	52°49'00"	M		185.67 M		
IS 15 DP 613826	DISK 44 DP 613826	ob23	128°08'58"	M		431.09 M		
IT 38 DP 613826	IS 46 DP 613826	ob54	225°35'30"	M		85.87 M		
IT 38 DP 613826	IS 50 DP 613826	ob55	221°37'30"	M		85.51 M		
IT 38 DP 613826	IS 45 DP 613826	ob56	222°22'00"	M		324.11 M		
IT 38 DP 613826	IS 29 DP 613826	ob57	221°28'10"	M		324.00 M		
IT 38 DP 613826	PEG 28 DP 613826	ob58	221°18'40"	M		324.01 M		
IT I SO 10357	PEG 39 DP 613826	ob3	215°40'20"	M		159.33 M		
IT 38 DP 613826	PEG 3 DP 613826	ob59	328°36'50"	M		406.83 M		
IT (6) SO 10357	IT III SO 7414	ob4	211°25'26"	M		2,369.94 M		

Mark Name	Mark Condition	Description
DISK 41 DP 613826		in fence
DISK 44 DP 613826		flush in conc
IS (1) DP 5359		0.2 deep in carriageway
IS 15 DP 613826		0.3m down
IS 29 DP 613826		flush, PEG (2) DP 4348 reinstated
IS 43 DP 613826		flush
IS 45 DP 613826		flush
IS 46 DP 613826		flush
IS 48 DP 613826		flush
IS 49 DP 613826		d0.3
IS 50 DP 613826		flush



# Mark and Vector

**Survey Number** DP 613826  
**Meridional Circuit** Gawler 2000

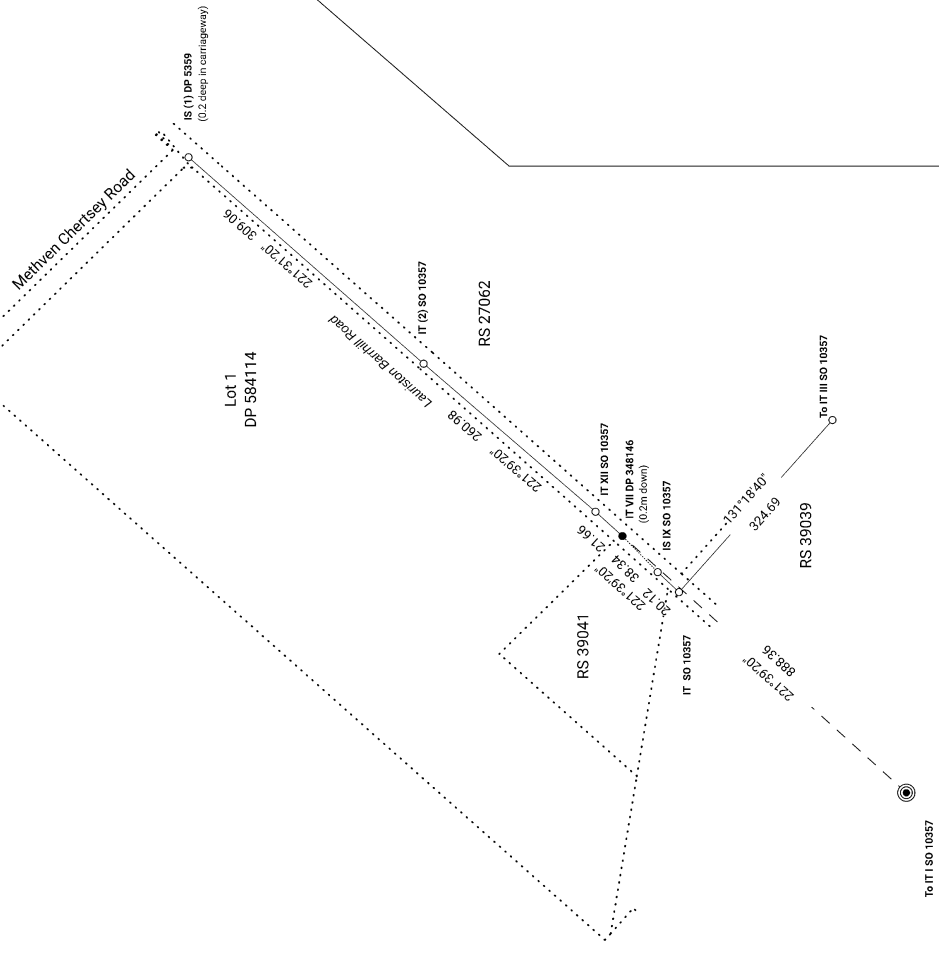
Mark Name	Mark Condition	Description
IT (6) SO 10357		0.3m down
IT 38 DP 613826		0.3m down
IT 601 DP 613826		0.3m down
IT 605 DP 613826		0.3m down
IT I SO 10357		0.2m down
IT III SO 7414		BPV3 - Stainless steel pin inside iron tube. Set in concrete pad. Mark is 0.6m to edge of seal and approx. 0.5m below the road.
IT VII DP 348146		0.2m down
IT VIII SO 10357		0.5m down
PEG 39 DP 613826		Line Peg

**\*\*\* End of Report \*\*\***

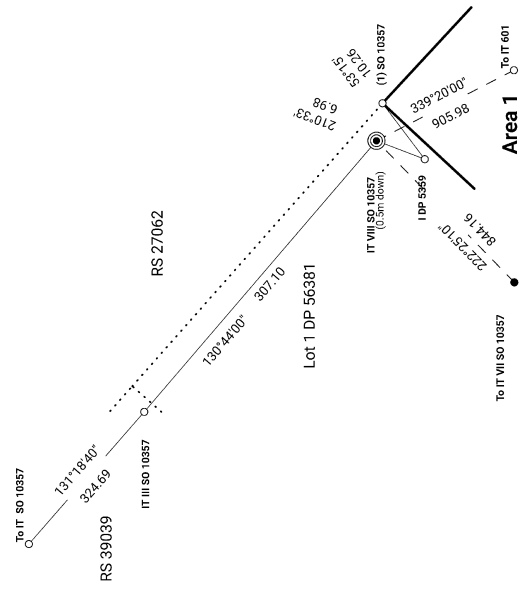




Diag. B



Diag. AD  
DISTORTED



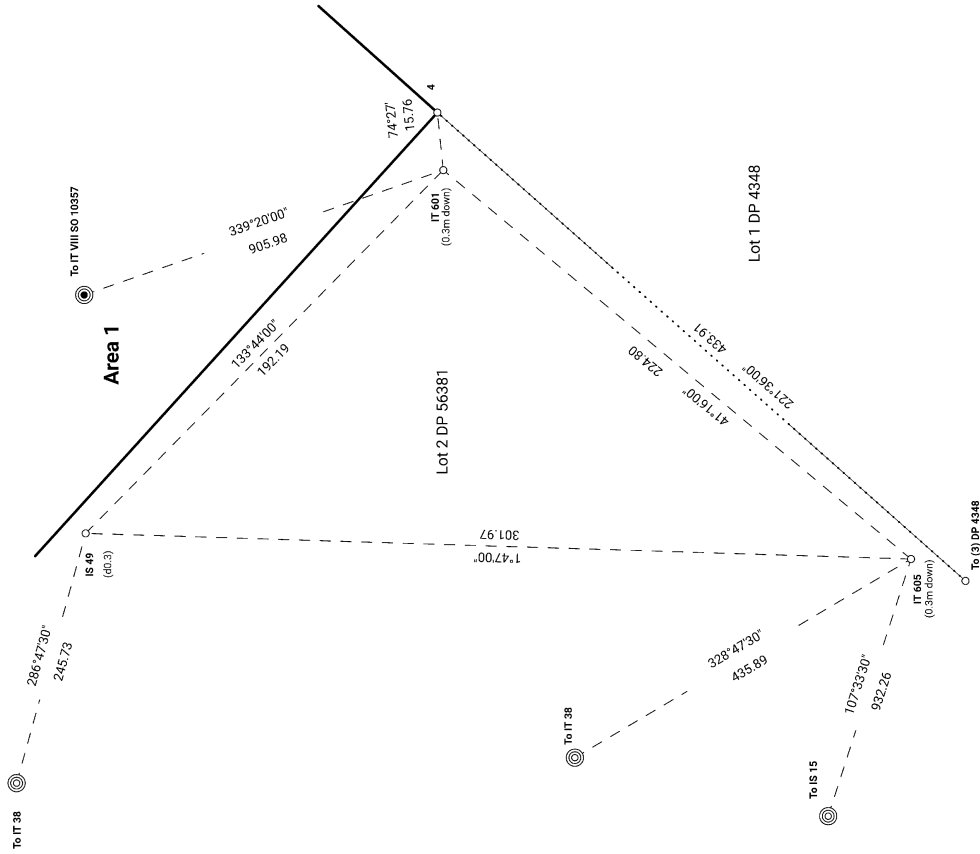
<p>Land District: Canterbury</p> <p><b>Digitally Generated Plan</b></p> <p>Generated on: 18/02/2026 11:16am Page 8 of 13</p>	<p>Lease Areas over Lot 2 DP 56381 &amp; RS 38614</p>	<p>Surveyor: Rita Winifred Dobbie Clark Firm: Envivo Limited Date of Survey: 3/02/2025</p>	<p>Record of Survey LT 613826 Approved on: 18/02/2026</p>
--	---	--	---







Diag. AF



S 5/5

Record of Survey  
 LT 613826  
 Approved on: 18/02/2026

Surveyor: Rita Winifred Dobbie Clark  
 Firm: Envivo Limited  
 Date of Survey: 3/02/2025

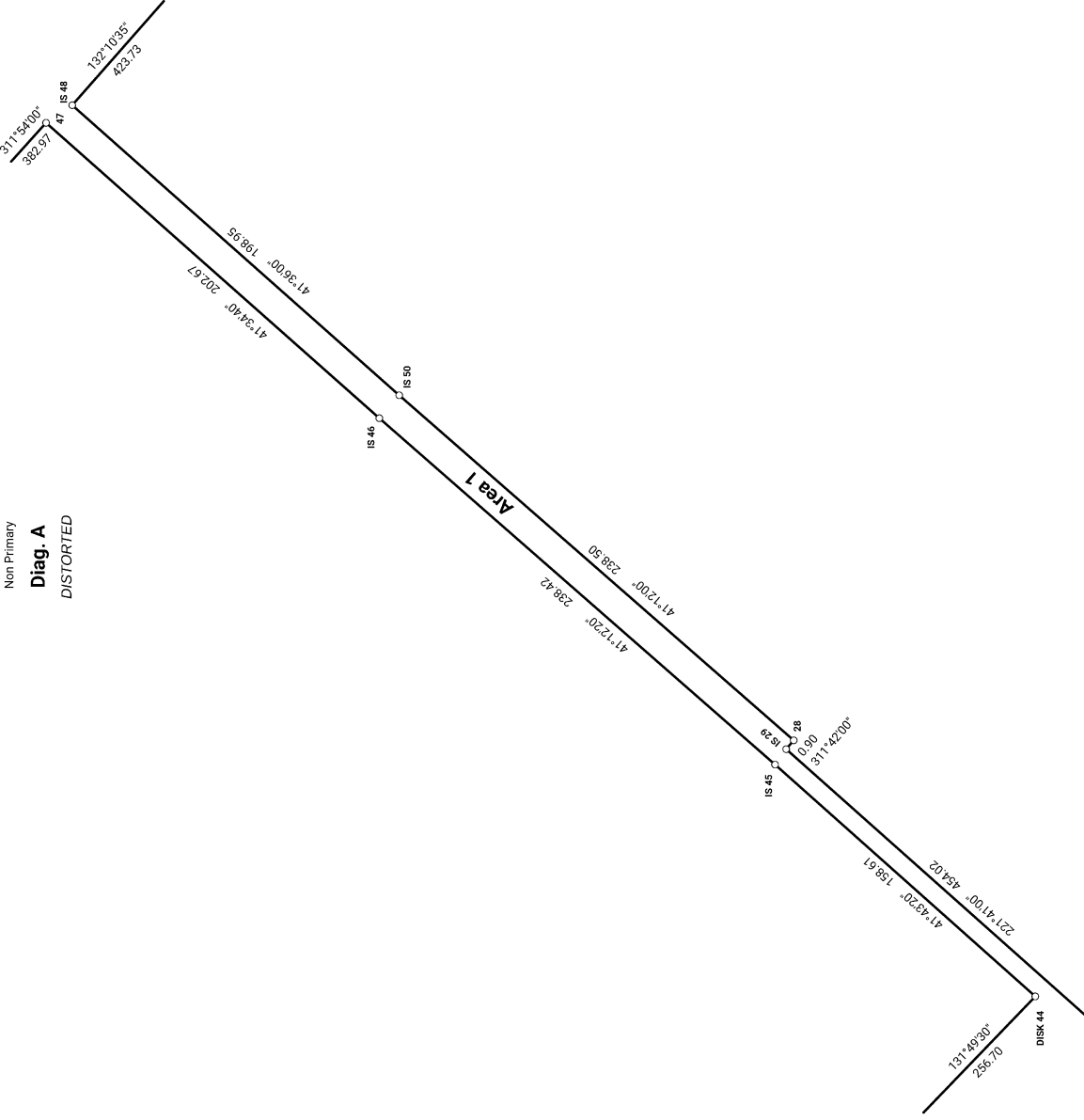
Lease Areas over Lot 2 DP 56381 & RS 38614

Land District: Canterbury  
 Digitally Generated Plan  
 Generated on: 18/02/2026 11:16am Page 11 of 13





Non Primary  
**Diag. A**  
 DISTORTED



T 2/2

<p>Land District: Canterbury</p>	<p>Lease Areas over Lot 2 DP 56381 &amp; RS 38614</p>	<p>Record of Survey          LT 613826          Approved on: 18/02/2026</p>
<p><b>Digitally Generated Plan</b>          Generated on: 18/02/2026 11:16am Page 13 of 13</p>	<p>Surveyor: Rita Winifred Dobbie Clark          Firm: Envivo Limited          Date of Survey: 3/02/2025</p>	<p>Surveyor: Rita Winifred Dobbie Clark          Firm: Envivo Limited          Date of Survey: 3/02/2025</p>