



Record of Survey - SO 590706

Survey Number SO 590706
Surveyor Reference 216498 Wairatahi
Surveyor Nicholas Roger Hope Wakefield
Survey Firm The Surveying Company (Hastings)
Surveyor Declaration I Nicholas Roger Hope Wakefield, being a licensed cadastral surveyor, certify that--
(a) this dataset provided by me and its related survey are accurate, correct and in accordance with the Cadastral Survey Act 2002 and Cadastral Survey Rules 2021; and
(b) the survey was undertaken by me or under my personal direction.
Declared on 14 Aug 2023 02:59 PM

Survey Details

Dataset Description	Sections 1 & 2	Type	Survey
Purpose	Legalisation	Survey Class	Class B
Status	Approved as to Survey	Vertical Datum	None
Land District	Hawkes Bay		
Meridional Circuit	Hawkes Bay 2000		

Survey Dates

Surveyed Date	27/04/2023	Certified Date	14/08/2023
Submitted Date	14/08/2023 14:59:08	Survey Approval Date	16/08/2023
Deposit Date			

Referenced Surveys

Survey Number	Land District	Bearing Correction
DP 11147	Hawkes Bay	0°00'00"
DP 13024	Hawkes Bay	0°00'00"
DP 13353	Hawkes Bay	0°00'00"
DP 2975	Hawkes Bay	0°00'00"
SO 1863	Hawkes Bay	0°00'00"
SO 4573	Hawkes Bay	0°00'00"
SO 5950	Hawkes Bay	0°00'00"
SO 438108	Hawkes Bay	0°00'00"
SO 454705	Hawkes Bay	0°00'00"
DP 542005	Hawkes Bay	0°00'00"

Territorial Authorities

Hastings District

Comprised In

RT 552618

Created Parcels

Parcels	Parcel Intent	Area	RT Reference
Section 1 Survey Office Plan 590706	Legalisation	0.6288 Ha	



Record of Survey - SO 590706

Created Parcels

Parcels	Parcel Intent	Area	RT Reference
Section 2 Survey Office Plan 590706	Fee Simple Title	13.8600 Ha	
Total Area		<u>14.4888 Ha</u>	

Mark and Vector

Survey Number SO 590706
 Meridional Circuit Hawkes Bay 2000

From	To	Code	Bearing	Adpt Surv	Bearing Correction	Distance	Adpt Surv	Class
IT 6 SO 438108	IT IX SO 1863	ob0	4°17'00" M			864.77 M		
IT IX SO 1863	RM 5 SO 6725	ob6	244°28'40" M			223.61 M		
RM 5 SO 6725	IT III SO 5950	ob7	224°10'40" M			354.29 M		
IT III SO 5950	IT 6 SO 438108	ob8	143°07'00" M			640.00 M		
IT III SO 5950	RM 4 DP 13353	ob9	296°43'30" M			47.11 M		
RM 4 DP 13353	RM 1 DP 13024	ob11	57°45'10" M			90.97 M		
RM 1 DP 13024	MA 3 SO 10492	ob12	50°33'50" M			179.91 M		
MA 3 SO 10492	RM 6 SO 6725	ob13	10°05'30" M			73.84 M		
RM 6 SO 6725	RM 5 SO 6725	ob14	92°29'30" M			60.19 M		
IT 6 SO 438108	IT 1 SO 590706	ob1	303°09'30" M			271.12 M		
IT 1 SO 590706	IT 2 SO 590706	ob31	303°09'30" M			264.16 M		
IT 2 SO 590706	IS 3 SO 590706	ob33	303°09'30" M			172.91 M		
IS 3 SO 590706	RM 3 DP 13353	ob34	38°12'30" M			112.61 M		
RM 3 DP 13353	RM 4 DP 13353	ob62	59°26'40" M			112.67 M		
IS 3 SO 590706	IT (5) SO 4573	ob35	169°59'25" M			583.27 M		
IT (5) SO 4573	IT 6 SO 438108	ob63	69°09'50" M			525.88 M		
IS 3 SO 590706	MA 4 SO 590706	ob36	325°34'00" M			85.50 M		
MA 4 SO 590706	RM 3 DP 13353	ob38	81°20'30" M			119.36 M		
IT 6 SO 438108	IT 5 SO 438108	ob2	311°03'00" A	SO 454705	0°00'00"	73.67 A	SO 454705	
IT 5 SO 438108	IT 7 SO 438108	ob15	19°19'20" A	SO 454705	0°00'00"	481.76 A	SO 454705	
IT 7 SO 438108	IT 8 SO 438108	ob19	0°08'20" A	SO 454705	0°00'00"	221.47 A	SO 454705	
IT 8 SO 438108	IT IX SO 1863	ob20	343°53'50" A	SO 454705	0°00'00"	143.52 A	SO 454705	
IT 6 SO 438108	XIX SO 4573	ob3	212°05'10" A	DP 542005	0°00'00"	413.15 A	DP 542005	
XIX SO 4573	IT (5) SO 4573	ob21	300°55'25" A	SO 438108	0°00'00"	317.15 A	SO 438108	
IT (5) SO 4573	IS I DP 11147	ob64	300°55'25" A	SO 4573	0°00'00"	8.78 A	DP 11147	
IS I DP 11147	IT III DP 11147	ob22	22°55'10" A	DP 11147	0°00'00"	329.25 A	DP 11147	
IT III DP 11147	IT IV DP 11147	ob23	303°10'40" A	DP 11147	0°00'00"	124.72 A	DP 11147	
IT IV DP 11147	IS V DP 11147	ob24	315°55'10" A	DP 11147	0°00'00"	184.47 A	DP 11147	
IS V DP 11147	IT I SO 5950	ob25	17°51'28" A	DP 11147	0°00'00"	82.36 A	SO 5950	
IT I SO 5950	IT II SO 5950	ob29	60°01'00" A	SO 5950	0°00'00"	54.57 A	SO 5950	
IT 5 SO 438108	PEG 23 SO 438108	ob16	211°09'00" A	SO 438108	0°00'00"	5.07 A	SO 438108	
IT 5 SO 438108	DISK 38 SO 438108	ob17	17°48'00" A	SO 438108	0°00'00"	172.02 A	SO 438108	
IT 5 SO 438108	PEG 29 SO 438108	ob18	358°52'50" A	SO 438108	0°00'00"	208.57 A	SO 438108	
IS V DP 11147	PEG (3) DP 11147	ob26	82°49'00" A	DP 11147	0°00'00"	15.41 A	DP 11147	
IT I SO 5950	PEG (1) SO 5950	ob30	132°57'00" A	SO 5950	0°00'00"	15.42 A	SO 5950	
IT III SO 5950	PEG (5) DP 13024	ob10	122°12'00" A	DP 13024	0°00'00"	10.88 A	DP 13024	
PEG (3) DP 11147	PEG (1) SO 5950	ob27	17°51'30" A	SO 5950	0°00'00"	69.32 A	SO 5950	Class A

Mark and Vector

Survey Number SO 590706

Meridional Circuit Hawkes Bay 2000

From	To	Code	Bearing	Adpt Surv	Bearing Correction	Distance	Adpt Surv	Class
PEG 23 SO 438108	UNMK 88 SO 438108	ob39	18°11'00"	A SO 438108	0°00'00"	24.84 A	SO 438108	Class B
UNMK 88 SO 438108	PEG 6 SO 590706	ob42	18°11'00"	A SO 438108	0°00'00"	20.48 C		Class BD
PEG 6 SO 590706	PEG 5 SO 590706	ob43	18°11'00"	A SO 438108	0°00'00"	12.87 C		Class BD
PEG 5 SO 590706	UNMK 99 SO 438108	ob44	18°11'00"	A SO 438108	0°00'00"	19.23 C		Class BD
UNMK 99 SO 438108	DISK 38 SO 438108	ob45	18°11'00"	A SO 438108	0°00'00"	99.52 A	SO 438108	Class B
DISK 38 SO 438108	PEG 7 SO 454705	ob46	308°18'20"	A SO 1863	0°00'00"	0.23 A	SO 454705	Class B
PEG (1) SO 5950	PEG (2) SO 5950	ob40	58°42'40"	A SO 5950	0°00'00"	18.92 A	SO 5950	Class A
PEG (2) SO 5950	PEG (5) DP 13024	ob47	58°42'40"	A SO 5950	0°00'00"	205.84 A	SO 5950	Class A
PEG (5) DP 13024	PEG (3) SO 1863	ob41	128°20'20"	A SO 1863	0°00'00"	300.91 A	SO 1863	Class B
PEG (3) SO 1863	PEG 29 SO 438108	ob48	128°18'20"	A SO 1863	0°00'00"	100.93 A	SO 438108	Class B
PEG 29 SO 438108	PEG 7 SO 454705	ob65	128°18'20"	A SO 1863	0°00'00"	71.97 A	SO 454705	Class B
PEG (3) DP 11147	PEG (1) DP 11147	ob28	134°12'30"	A DP 11147	0°00'00"	176.99 A	DP 11147	Class B
PEG (1) DP 11147	PEG (9) DP 11147	ob49	129°00'00"	A DP 11147	0°00'00"	98.89 A	DP 11147	Class B
PEG (9) DP 11147	PEG (2) DP 2975	ob50	123°07'00"	A DP 11147	0°00'00"	27.24 A	DP 11147	Class B
PEG (2) DP 2975	POST XVI DP 2975	ob51	123°15'00"	A DP 2975	0°00'00"	48.32 A	DP 2975	Class B
POST XVI DP 2975	POST XV DP 2975	ob52	120°46'00"	A DP 2975	0°00'00"	26.63 A	DP 2975	Class B
POST XV DP 2975	POST XIV DP 2975	ob53	112°15'00"	A DP 2975	0°00'00"	21.89 A	DP 2975	Class B
POST XIV DP 2975	POST XIII DP 2975	ob54	92°29'00"	A DP 2975	0°00'00"	38.04 A	DP 2975	Class B
POST XIII DP 2975	POST XII DP 2975	ob55	74°00'00"	A DP 2975	0°00'00"	40.37 A	DP 2975	Class B
POST XII DP 2975	POST XI DP 2975	ob56	82°39'00"	A DP 2975	0°00'00"	89.06 A	DP 2975	Class B
POST XI DP 2975	POST X DP 2975	ob57	105°52'00"	A DP 2975	0°00'00"	20.18 A	DP 2975	Class B
POST X DP 2975	POST IX DP 2975	ob58	143°14'00"	A DP 2975	0°00'00"	55.48 A	DP 2975	Class B
POST IX DP 2975	PEG 23 SO 438108	ob59	125°45'00"	A DP 2975	0°00'00"	2.78 A	SO 438108	Class B
IS 3 SO 590706	UNMK 7 SO 590706	ob37	107°08'00"	M		41.42 C		

Mark and Vector

Survey Number SO 590706

Meridional Circuit Hawkes Bay 2000

From	To	Code	Bearing	Adpt Surv	Bearing Correction	Distance	Adpt Surv	Class
UNMK 7 SO 590706	PEG 8 SO 590706	ob60	80°57'00"	C		10.77 C		Class BD
PEG 8 SO 590706	IT 2 SO 590706	ob61	131°38'30"	M		126.50 M		
IT 6 SO 438108	PEG 6 SO 590706	ob4	333°10'30"	M		97.60 M		
IT 6 SO 438108	PEG 5 SO 590706	ob5	338°03'00"	M		107.09 M		
IT 1 SO 590706	PEG 29 SO 438108	ob32	57°00'40"	M		199.50 M		
IT II SO 5950	IT III SO 5950	ob66	60°01'00"	A	DP 13353	0°00'00"	169.59 A	DP 13353

Mark Name	Mark Condition	Description
IS 3 SO 590706		Flush at edge of seal
IT (5) SO 4573		Down 0.3m in road shoulder
IT 1 SO 590706		Down 0.3m in paddock
IT 2 SO 590706		Down 0.3m in paddock
IT 6 SO 438108		Down 0.15m in paddock
IT III SO 5950		Iron tube down 0.3m in lawn
IT IX SO 1863		Down 0.4m in paddock
MA 3 SO 10492		Flush in concrete footpath
MA 4 SO 590706		Flush in top of kerb
RM 1 DP 13024		Brass plaque flush in concrete footpath
RM 3 DP 13353		Brass plaque flush in concrete driveway
RM 4 DP 13353		Brass plaque flush in concrete footpath
RM 5 SO 6725		Brass plaque flush in concrete footpath
RM 6 SO 6725		Remains on brass plaque (snapped off) in concrete footpath

*** End of Report ***



THE SURVEYING COMPANY
115E Avenue Road
PO BOX 922 HASTINGS
PH: 06 878 6349
FAX: 06 878 6989

SCHEDULE OF AREAS

Land Registration District

Hawke's Bay

Plan Number

SO 590706

Territorial Authority (the Council)

Hastings District Council

Council Reference

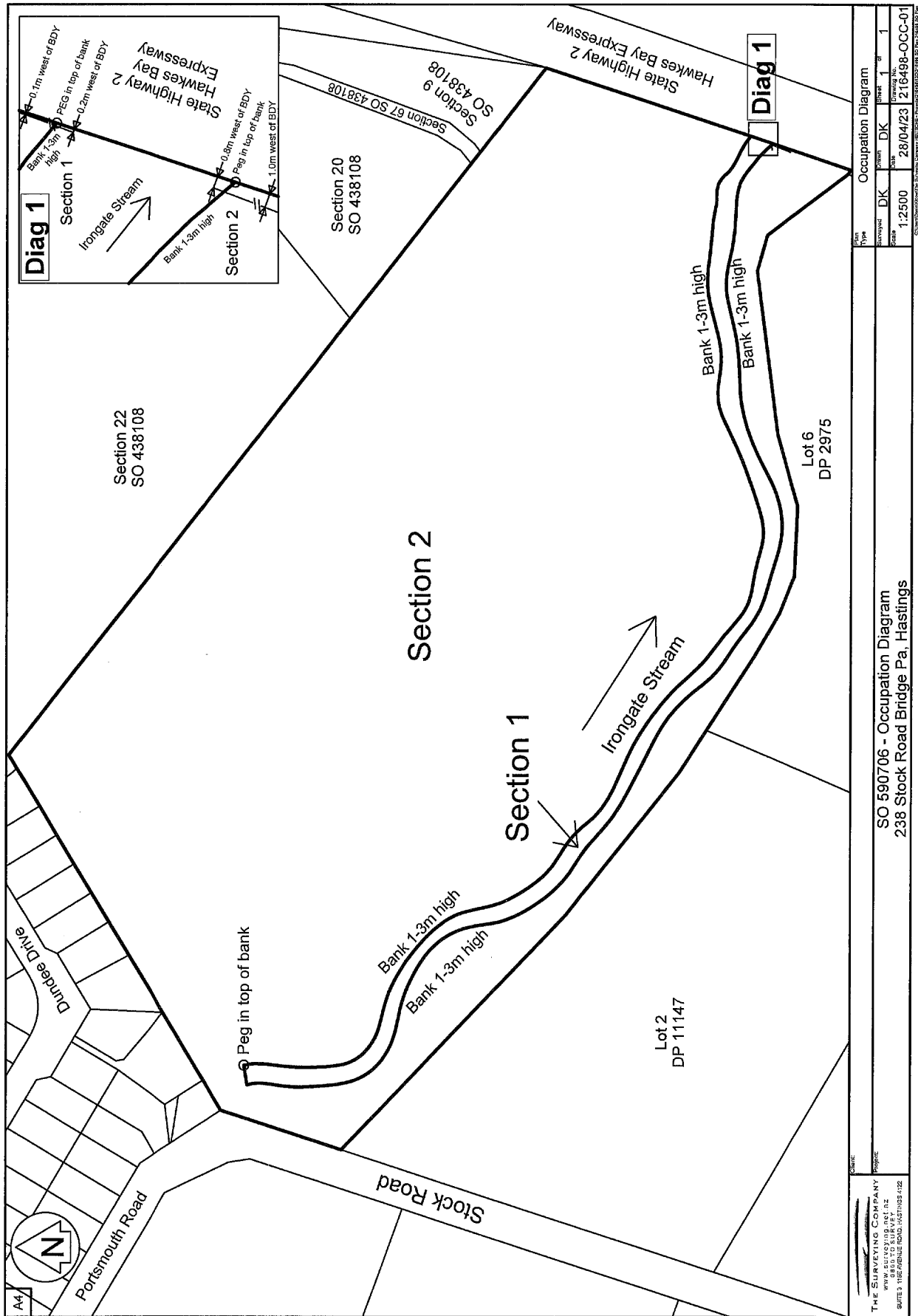
-

LAND TO BE ACQUIRED FOR RESERVE

SHOWN	DECRPTION	RT REFERENCE	AREA
SECTION 1	SECTION 18 SO 438108	RT: 552618	0.6288ha

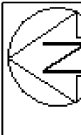
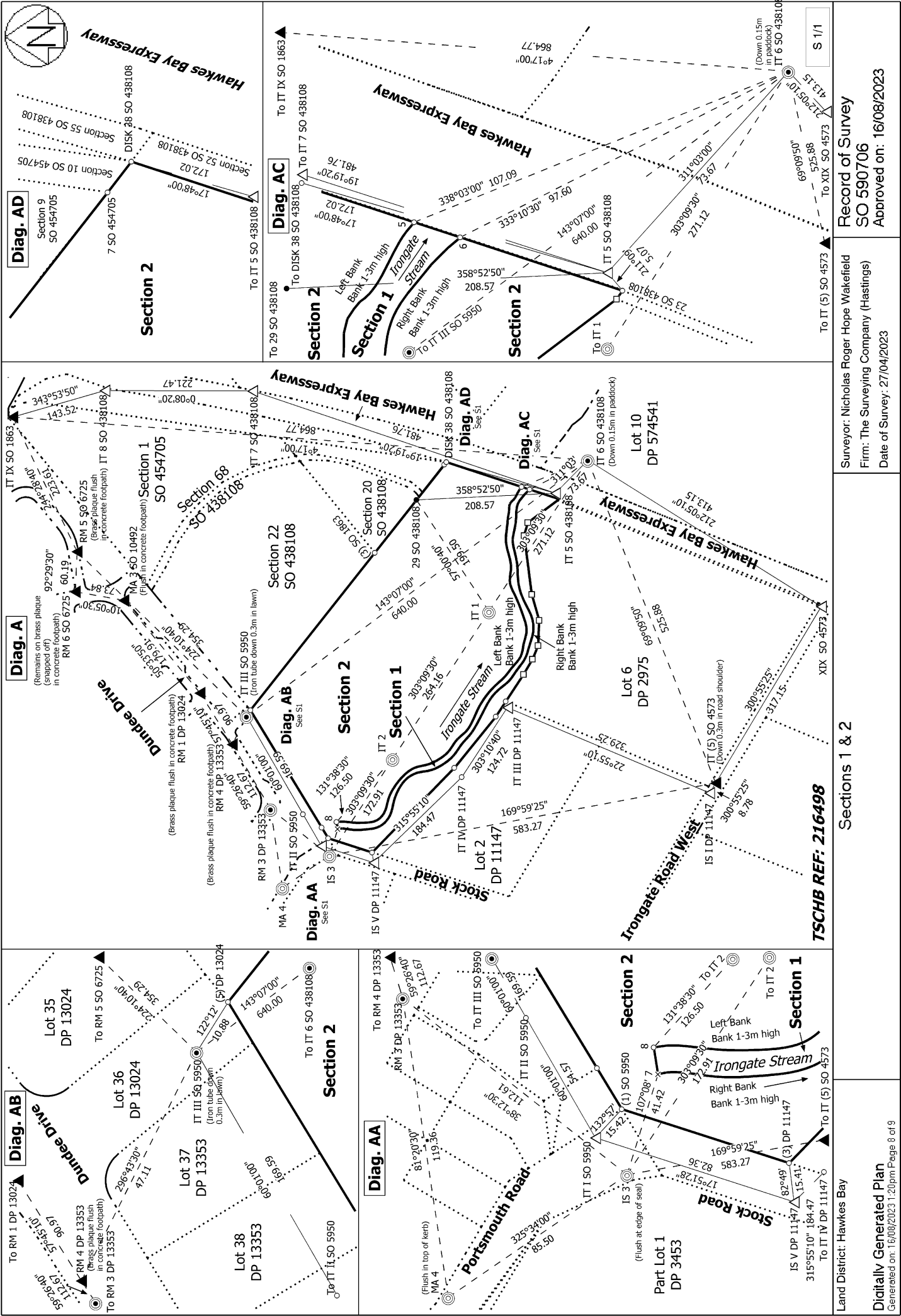
Occupation Diagram

N



Occupation Diagram	
Surveyed	DK
Scale	1:2500
Date	28/04/23
Drawing No.	216498-0CC-01

Occupation Diagram	
Project	SO 590706 - Occupation Diagram
Client	238 Stock Road Bridge Pa. Hastings



Record of Survey
SO 590706
Approved on: 16/08/2023

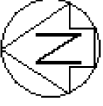
Surveyor: Nicholas Roger Hope Wakefield
Firm: The Surveying Company (Hastings)
Date of Survey: 27/04/2023

Sections 1 & 2

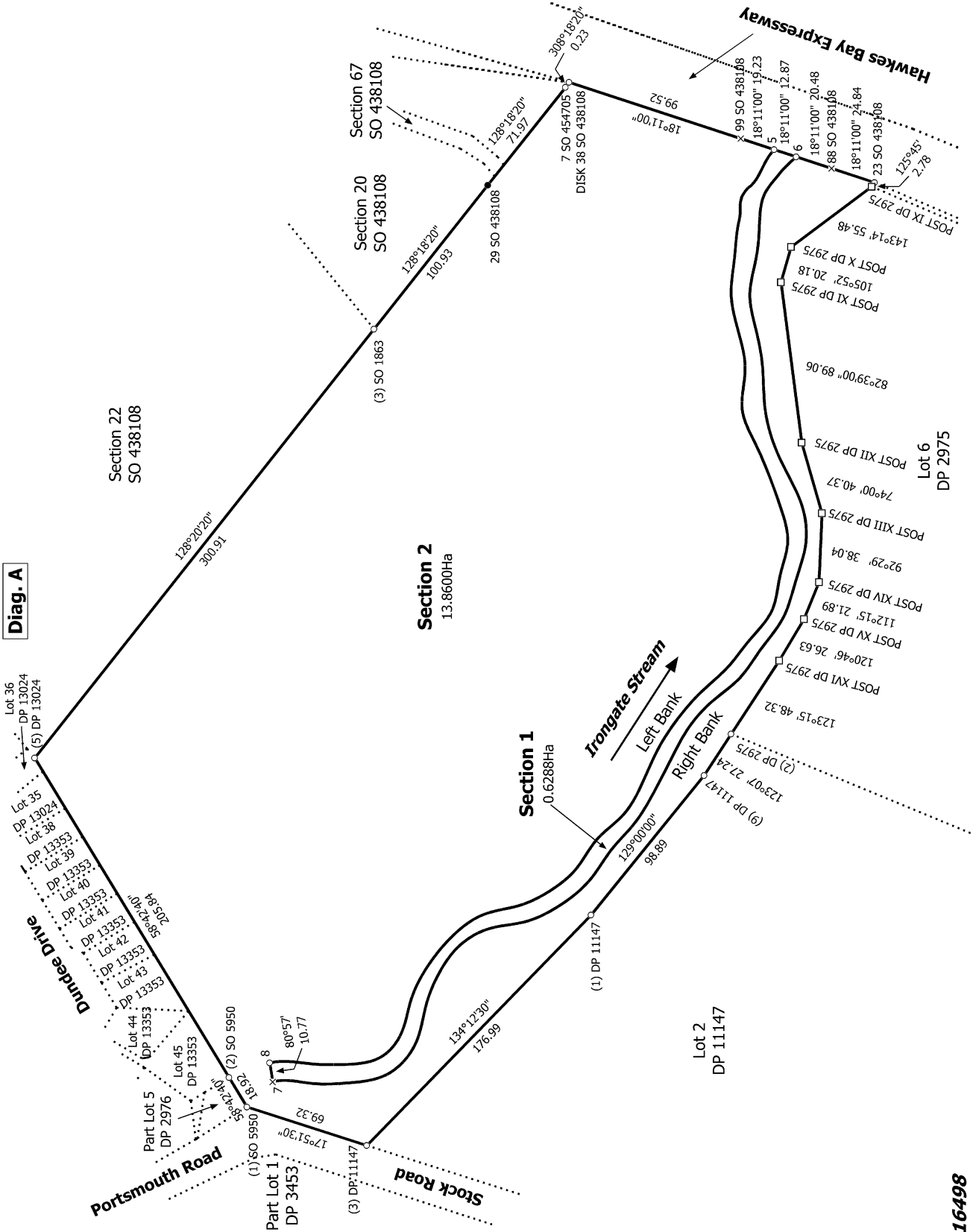
TSCHB REF: 216498

Land District: Hawkes Bay
Digitally Generated Plan
Generated on: 16/08/2023 1:20pm Page 8 of 9

S 1/1



Diag. A



TSCHB REF: 216498

Land District: Hawkes Bay

Digitally Generated Plan

Generated on: 16/08/2023 1:20pm Page 9 of 9

Sections 1 & 2

Surveyor: Nicholas Roger Hope Wakefield
Firm: The Surveying Company (Hastings)
Date of Survey: 27/04/2023

Record of Survey
SO 590706
Approved on: 16/08/2023

T 1/1