



# Requesting imagery during an emergency

## Quick guide

Contact LINZ Duty Team: [emergency@linz.govt.nz](mailto:emergency@linz.govt.nz) | 028 255 17047

### ? How can LINZ support your response?

In an emergency LINZ supports satellite imagery, aerial photography, LiDAR and bathymetry data, by:

- coordinating data requirements and funding
- requesting high resolution imagery via Disasters Charter
- publishing imagery
- sharing daily Imagery Status Reports

### 🌐 International Charter: Space and Major Disasters

The Disasters Charter is a global partnership of space agencies who deliver satellite imagery in an emergency. In New Zealand, when a national or local emergency is declared, NEMA can activate the Disasters Charter, enabling LINZ to request high resolution satellite imagery, free of charge. Access this imagery from the LINZ Emergency Imagery Hub – see QR code below.

### i What information do we need?

- Location** Where are the areas of interest?
- Purpose** What features do you need to see?
- Budget** Is there budget available?
- Licensing** Who will the imagery be shared with?



Scan to access  
Emergency Imagery Hub



More information in  
Emergency Imagery Handbook

Contact us in an emergency and during your next exercise

Email: [emergency@linz.govt.nz](mailto:emergency@linz.govt.nz)  
Phone: 028 255 17047  
Website: [linz.govt.nz/emergency](http://linz.govt.nz/emergency)

Toitū Te Whenua  
Land Information  
New Zealand



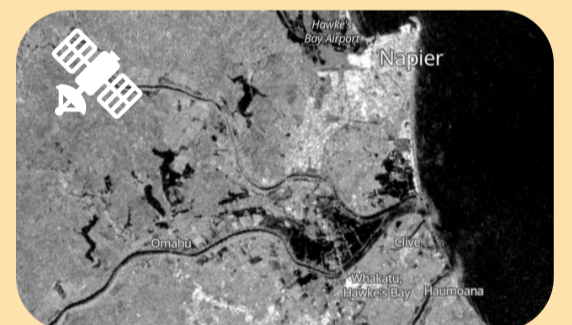
### How is imagery used?



**Reconnaissance** – snapshot to inform wide area impact assessment and prioritisation.



**Satellite imagery** – overview of impact, analyse data to extract information and inform recovery.



**Radar** – analyse data to extract information including flood extents or fire perimeters.



**Aerial imagery** – Record of the event for LIM Reports, insurance claims and community meetings.



**Drone** – gather intel for a small, local sites. Easy to recapture the same site multiple times.