



Title Plan - DP 317323

Survey Number DP 317323
Surveyor Reference 10840B
Surveyor Craig William Hurford
Survey Firm Survus Contracting Ltd
Surveyor Declaration I Craig William Hurford, being a licensed cadastral surveyor, certify that:
(a) this dataset provided by me and its related survey are accurate, correct and in accordance with the Cadastral Survey Act 2002 and the Rules for Cadastral Survey 2010, and
(b) the survey was undertaken by me or under my personal direction.
Declared on 19 Jan 2017 04:45 PM

Survey Details

Dataset Description Unit plan in substitution under Section 15(4) Unit Titles Act 210 being Units on Section 26 SO 459717
Status Deposited
Land District Canterbury
Submitted Date 19/01/2017
Survey Class Class A
Survey Approval Date 23/01/2017
Deposit Date 28/02/2017

Territorial Authorities

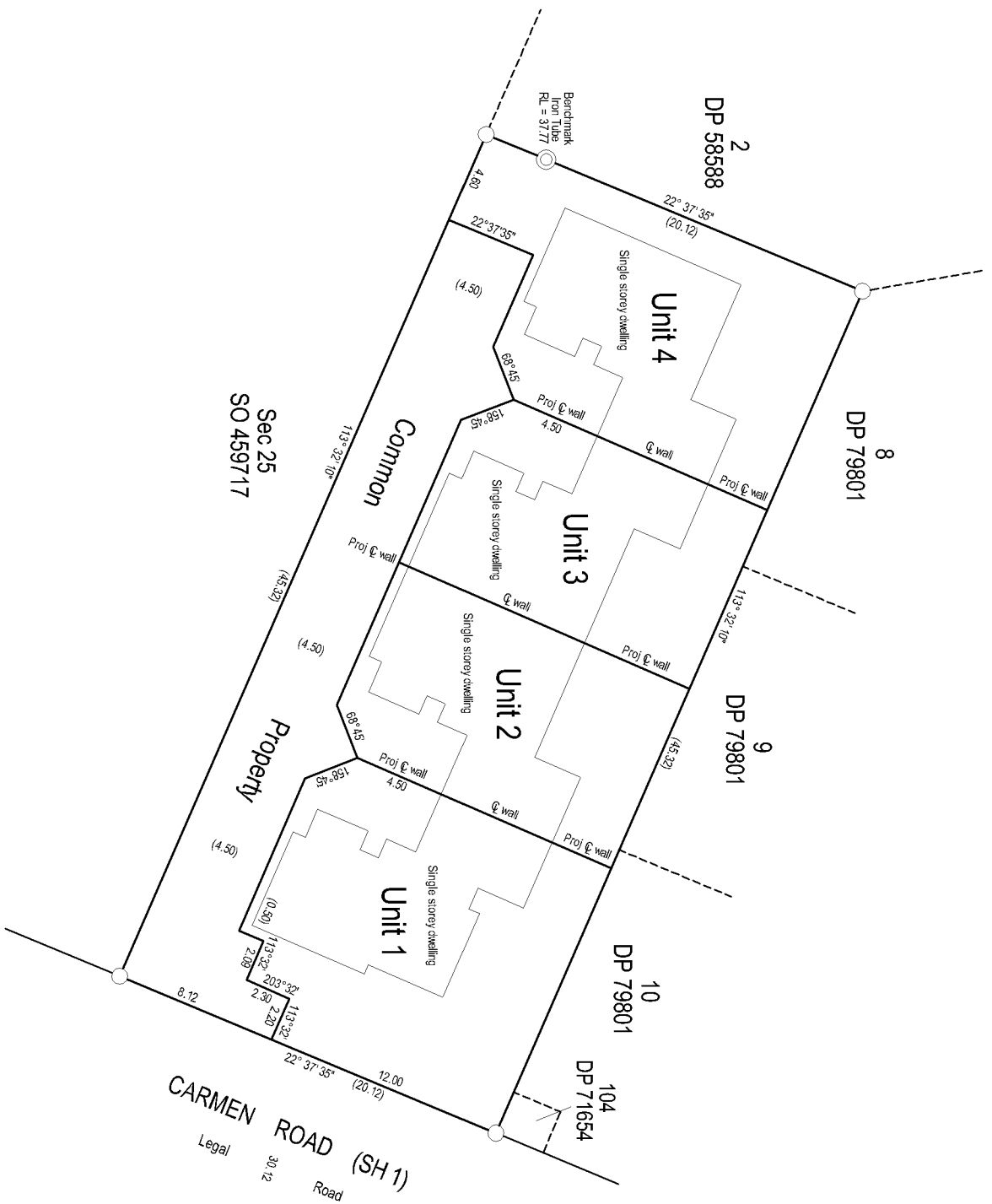
Christchurch City

Comprised In

CT CFR67885 (Bal)
CT CFR67886 (Bal)
CT CFR67887 (Bal)
CT CFR67888 (Bal)

Created Parcels

Parcels	Parcel Intent	Area	CT Reference
Principal Unit 1 Deposited Plan 317323	Principal Unit		
Principal Unit 2 Deposited Plan 317323	Principal Unit		
Principal Unit 3 Deposited Plan 317323	Principal Unit		
Principal Unit 4 Deposited Plan 317323	Principal Unit		
Total Area		0.0000 Ha	



LAND DISTRICT Canterbury

Unit plan in Substitution under Section 15(4) Unit Titles Act 2010 being Units on Sec 26 SO 459717

TERRITORIAL AUTHORITY Christchurch City
 Surveyed by **Suryus Consultants** 108408
 Scale: **1 : 150 @ A2** Date: **February 2013**

File Received Instructions	DP 317323
<p>Notes:</p> <ol style="list-style-type: none"> Units 1 - 4 have an upper height limit of 45.00m RL and a lower height limit of 35.00m RL in terms of Christchurch Drainage Datum. Existing Unit and Common Property boundaries are adopted from DP 317323 (deposited 15/04/2003). Unit boundaries are coincident with parcel boundaries where applicable. 	
<p>Body Corporate Address : 75 Carmen Road, Christchurch</p> <p>Levels are in terms of Christchurch Drainage Datum and are adopted from DP 317323.</p> <p>Benchmark : Iron Tube RL 37.77</p> <p>Height Origin : SSMH Inv RL 36.39 (opposite 77A Carmen Road)</p>	
Supplementary Record Sheet	85723
Class of Survey	Class A
Total Area	
<p>Comprised in CFR's 67885 (Bal), 67886 (Bal), 67887 (Bal) & 67888 (Bal)</p>	
Field Book	Traverse Book
Reference Plans	DPs 58588, 71654, 79801, 317323, 34194 SOs 11580, 459717, 50294
Examined	Correct