



# CSD Plan - DP 440457

---

**Survey Number** DP 440457  
**Surveyor Reference** 2967  
**Surveyor** John William Maggs  
**Survey Firm** Birch Surveyors Ltd  
**Surveyor Declaration** I John William Maggs, being a licensed cadastral surveyor, certify that:  
(a) this dataset provided by me and its related survey are accurate, correct and in accordance with the Cadastral Survey Act 2002 and the Rules for Cadastral Survey 2010, and  
(b) the survey was undertaken by me or under my personal direction.  
Declared on 14 Apr 2011 12:36 PM

---

## Survey Details

**Dataset Description** LOTS 1 & 2 FORMERLY BEING LOT 1 DP 170528 & LOT 1 DP 167674  
**Purpose** LT Subdivision  
**Status** Deposited **Type** Survey  
**Land District** North Auckland **Survey Class** Class B  
**Coordinate System** Mount Eden 2000

---

## Survey Dates

**Surveyed Date** 21/02/2011 **Certified Date** 14/04/2011  
**Submitted Date** 14/04/2011 12:36:33 **Survey Approval Date** 15/04/2011  
**Deposit Date** 23/09/2011

---

## Referenced Surveys

Survey Number	Land District	Bearing Correction
SO 50183	North Auckland	0°00'00"
SO 27359	North Auckland	0°00'00"
DP 375323	North Auckland	0°00'00"
DP 197184	North Auckland	0°00'00"
DP 122725	North Auckland	0°00'00"
DP 121118	North Auckland	0°00'00"
DP 132639	North Auckland	0°00'00"
DP 77947	North Auckland	0°00'00"
DP 167674	North Auckland	0°00'00"
LT 121097	North Auckland	0°00'00"
SO 14658	North Auckland	-0°06'30"

---

## Territorial Authorities

Auckland

---

## Comprised In

CT NA102A/486

---



# CSD Plan - DP 440457

---

**Comprised In**

CT NA101D/18

---

**Created Parcels**

<b>Parcels</b>	<b>Parcel Intent</b>	<b>Area</b>	<b>CT Reference</b>
Area B Deposited Plan 440457	Covenant Area		
Area D Deposited Plan 440457	Covenant Area		
Area C Deposited Plan 440457	Covenant Area		
Area A Deposited Plan 440457	Easement		
Area E Deposited Plan 440457	Covenant Area		
Area F Deposited Plan 440457	Easement		
Lot 1 Deposited Plan 440457	Fee Simple Title	4.5494 Ha	547201
Lot 2 Deposited Plan 440457	Fee Simple Title	2.4511 Ha	547202
Area Q Deposited Plan 440457	Easement		
Area M Deposited Plan 440457	Easement		
Area U Deposited Plan 440457	Easement		
Area L Deposited Plan 440457	Easement		
Area V Deposited Plan 440457	Easement		
Area W Deposited Plan 440457	Easement		
Area O Deposited Plan 440457	Easement		
Area R Deposited Plan 440457	Easement		
Area S Deposited Plan 440457	Easement		
Area X Deposited Plan 440457	Easement		
Area Y Deposited Plan 440457	Easement		
Area P Deposited Plan 440457	Easement		
Area Z Deposited Plan 440457	Easement		
<b>Total Area</b>		<hr/> 7.0005 Ha	

# Mark and Vector

Survey Number DP 440457  
Coordinate System Mount Eden 2000

From	To	Code	Bearing		Adpt Surv	Distance		Adpt Surv
IT IV SO 50183	IS II DP 77947	ob0	65°29'00"	A	LT 121097	161.74	A	LT 121097
IS II DP 77947	IT III DP 77947	ob3	79°33'40"	A	LT 121097	173.02	A	LT 121097
IS II DP 77947	IS VI DP 121097	ob4	159°39'20"	A	LT 121097	41.07	A	LT 121097
IS VI DP 121097	IT V DP 121097	ob5	159°39'20"	M		122.72	M	
IT V DP 121097	IS IV DP 121097	ob7	199°16'20"	A	DP 121118	114.98	A	DP 121118
IS IV DP 121097	IT I DP 132639	ob8	154°28'56"	A	DP 132639	37.36	A	DP 132639
IT I DP 132639	IT III SO 50183	ob9	227°08'40"	A	DP 121118	126.02	A	DP 121118
IT III SO 50183	IT IV SO 50183	ob11	344°03'20"	A	LT 121097	326.95	A	LT 121097
IT III DP 77947	IS VII DP 121097	ob2	234°43'10"	A	DP 121118	108.41	A	DP 121118
IS VII DP 121097	IS VI DP 121097	ob12	263°51'10"	M		67.78	M	
IT IV SO 50183	POST SO 27359	ob1	74°07'00"	A	DP 77947	22.13	A	DP 77947
POST SO 27359	PEG 1J DP 375323	ob13	71°08'40"	A	DP 77947	74.56	A	DP 375323
PEG DP 77947	PEG DP 121097	ob15	71°11'40"	A	DP 77947	108.39	A	LT 121097
PEG DP 121097	IS VII DP 121097	ob16	207°42'00"	A	DP 132639	56.38	A	DP 132639
PEG DP 121097	PEG DP 132639	ob17	164°29'00"	A	DP 132639	53.91	A	DP 132639
PEG DP 132639	POST DP 121118	ob18	237°45'00"	A	DP 121118	19.98	A	DP 132639
POST DP 121118	POST DP 121118	ob19	187°05'30"	A	DP 121118	67.82	A	DP 121118
POST DP 121118	POST DP 121118	ob20	208°17'00"	A	DP 121118	38.18	A	DP 121118
POST DP 121118	PEG DP 132639	ob21	179°35'00"	A	DP 121118	9.04	A	DP 132639
PEG DP 132639	UNMK DP 132639	ob22	179°35'00"	A	DP 121118	4.11	A	DP 132639
UNMK DP 132639	UNMK DP 121118	ob23	179°35'00"	A	DP 121118	23.89	A	DP 132639
UNMK DP 121118	PEG DP 121118	ob24	179°35'00"	A	DP 121118	8.09	A	DP 132639
PEG DP 121118	IT V DP 121097	ob25	328°30'00"	A	DP 121118	42.71	A	DP 121118
PEG DP 121118	PEG 2A DP 440457	ob26	248°56'00"	A	DP 121118	2.94	C	
PEG 2A DP 440457	ABD 4A DP 440457	ob128	248°56'00"	A	DP 121118	29.84	C	
ABD 4A DP 440457	PEG 2E DP 440457	ob28	207°49'00"	A	DP 121118	6.30	C	
PEG 2E DP 440457	UNMK DP 132639	ob130	207°49'00"	A	DP 121118	42.36	C	
UNMK DP 132639	POST DP 121118	ob61	207°49'00"	A	DP 121118	1.22	A	DP 132639
POST DP 121118	IS IV DP 121097	ob29	201°32'00"	A	DP 121118	17.44	A	DP 121118
POST SO 27359	PEG DP 132639	ob14	163°58'30"	A	DP 77947	244.98	A	DP 132639
PEG DP 132639	PEG DP 132639	ob31	77°27'00"	A	DP 132639	59.77	A	DP 132639
PEG DP 132639	IT I DP 132639	ob33	109°19'00"	A	DP 132639	37.04	A	DP 132639
PEG DP 132639	UNMK DP 167674	ob34	33°51'00"	A	DP 167674	42.03	A	DP 167674
UNMK DP 167674	POST DP 121118	ob59	33°51'00"	A	DP 167674	3.32	A	DP 167674
IT I DP 132639	IS III DP 121097	ob10	134°30'50"	A	DP 121118	97.19	A	DP 121118
IS III DP 121097	IS IX DP 77947	ob35	49°05'30"	A	DP 121118	56.15	A	DP 121118
IS IX DP 77947	IT VIII DP 77947	ob36	35°01'00"	A	DP 121118	111.90	A	DP 121118
IT VIII DP 77947	IS X DP 121097	ob37	285°07'40"	A	DP 121118	81.52	A	DP 121118
IS X DP 121097	IS XI DP 121097	ob38	6°18'20"	A	DP 121118	59.23	A	DP 121118

# Mark and Vector

Survey Number DP 440457  
Coordinate System Mount Eden 2000

From	To	Code	Bearing	Adpt Surv	Distance	Adpt Surv
IS XI DP 121097	IT V DP 121097	ob39	271°15'20"	A DP 121118	81.93	A DP 121118
PEG DP 132639	PEG DP 121097	ob32	163°58'30"	A DP 77947	47.77	A DP 132639
PEG DP 121097	UNMK DP 121097	ob48	68°50'00"	A LT 121097	40.96	A LT 121097
UNMK DP 121097	PEG DP 121097	ob49	68°50'00"	A LT 121097	5.35	A LT 121097
UNMK DP 121118	PEG DP 121097	ob141	160°10'00"	A LT 121097	12.17	A DP 121118
PEG DP 121097	PEG DP 77947	ob40	56°39'00"	A DP 77947	51.24	A LT 121097
PEG DP 77947	PEG DP 121097	ob41	46°28'30"	A SO 14658	34.86	A LT 121097
PEG DP 121097	UNMK DP 121097	ob42	46°28'30"	A SO 14658	4.80	A LT 121097
UNMK DP 121097	PEG DP 77947	ob44	46°28'30"	A SO 14658	52.25	A LT 121097
PEG DP 77947	PEG DP 121097	ob46	38°15'00"	A SO 14658	88.64	A LT 121097
PEG DP 121097	IT VIII DP 77947	ob47	59°49'30"	A DP 121118	22.00	A DP 121118
PEG DP 121118	PEG DP 121118	ob27	131°42'00"	A DP 121118	19.77	A DP 121118
PEG DP 121118	PEG DP 121118	ob52	119°42'00"	A DP 121118	28.89	A DP 121118
PEG DP 121118	PEG DP 121118	ob53	129°59'00"	A DP 121118	15.41	A DP 121118
PEG DP 121118	PEG DP 121118	ob54	98°02'00"	A DP 121118	12.49	A DP 121118
PEG DP 121118	PEG DP 121118	ob55	141°08'00"	A DP 121118	21.18	A DP 121118
PEG DP 121118	PEG DP 121118	ob56	99°03'00"	A DP 121118	15.30	A DP 121118
PEG DP 121118	PEG DP 121097	ob57	86°02'30"	A DP 167674	20.37	A DP 167674
PEG DP 121097	UNMK 5 DP 440457	ob43	282°54'00"	A LT 121097	14.07	C
PEG DP 121097	PEG DP 121097	ob62	305°58'00"	A LT 121097	26.66	A LT 121097
PEG DP 121097	UNMK 6 DP 440457	ob63	349°31'00"	A LT 121097	4.42	C
UNMK DP 132639	PEG DP 132639	ob64	349°31'00"	A LT 121097	6.98	A DP 132639
PEG DP 132639	PEG DP 121097	ob66	349°31'00"	A LT 121097	9.00	A LT 121097
PEG DP 121097	UNMK DP 132639	ob68	246°10'50"	A LT 121097	5.43	A DP 132639
UNMK DP 132639	UNMK DP 132639	ob71	246°10'50"	A LT 121097	5.19	A DP 132639
UNMK DP 132639	PEG DP 121097	ob73	246°10'50"	A LT 121097	49.39	A DP 132639
UNMK DP 121097	PEG DP 121097	ob50	20°30'00"	A LT 121097	5.24	A LT 121097
PEG DP 121097	PEG DP 132639	ob75	66°10'50"	A LT 121097	49.29	A DP 132639
PEG DP 132639	PEG DP 132639	ob76	66°10'50"	A LT 121097	5.84	A DP 132639
PEG DP 132639	UNMK DP 121097	ob77	66°10'50"	A LT 121097	6.19	A DP 132639
UNMK DP 121097	UNMK DP 167674	ob78	330°49'00"	A LT 121097	56.54	A DP 167674
UNMK DP 121097	PEG DP 132639	ob45	282°54'00"	A LT 121097	15.78	A DP 132639
PEG DP 132639	UNMK DP 121097	ob79	282°54'00"	A LT 121097	1.11	A DP 132639
UNMK DP 121097	UNMK DP 121097	ob81	305°58'00"	A LT 121097	24.25	A LT 121097
UNMK DP 121097	UNMK 7 DP 440457	ob82	349°31'00"	A LT 121097	4.08	C
UNMK DP 132639	UNMK DP 132639	ob83	349°31'00"	A LT 121097	6.74	A DP 132639
UNMK DP 132639	UNMK DP 121097	ob85	349°31'00"	A LT 121097	5.48	A DP 132639
UNMK DP 121097	UNMK DP 121097	ob87	79°31'00"	A LT 121097	2.65	A LT 121097
UNMK DP 121097	POST DP 121118	ob88	349°31'00"	A LT 121097	12.73	A LT 121097
POST DP 121118	UNMK DP 121097	ob89	230°12'00"	A LT 121097	3.56	A LT 121097

# Mark and Vector

Survey Number DP 440457  
Coordinate System Mount Eden 2000

From	To	Code	Bearing	Adpt Surv	Distance	Adpt Surv
UNMK DP 121097	UNMK DP 132639	ob91	330°49'00"	A LT 121097	60.07	A DP 132639
UNMK DP 132639	UNMK DP 132639	ob93	330°49'00"	A LT 121097	1.91	A DP 132639
POST DP 121118	UNMK DP 132639	ob30	111°24'00"	A DP 132639	1.61	A DP 132639
PEG DP 121118	PEG A1 DP 132639	ob58	220°24'00"	A DP 132639	125.71	A DP 132639
PEG A1 DP 132639	PEG DP 132639	ob94	313°04'00"	A DP 132639	26.48	A DP 132639
PEG DP 132639	UNMK DP 132639	ob96	313°24'00"	A DP 132639	15.47	A DP 132639
PEG DP 132639	IS II DP 121097	ob80	321°58'00"	A DP 132639	26.82	A DP 132639
IS II DP 121097	UNMK DP 132639	ob97	312°09'00"	A DP 132639	8.76	A DP 132639
UNMK DP 132639	UNMK DP 132639	ob84	312°09'00"	A DP 132639	6.59	A DP 132639
UNMK DP 132639	PEG DP 132639	ob86	313°24'00"	A DP 132639	6.79	A DP 132639
UNMK DP 132639	UNMK DP 132639	ob65	312°09'00"	A DP 132639	17.03	A DP 132639
PEG DP 132639	UNMK DP 121097	ob67	79°31'00"	A LT 121097	4.00	A LT 121097
UNMK DP 132639	PEG DP 132639	ob74	312°09'00"	A DP 132639	4.38	A DP 132639
UNMK DP 132639	PEG DP 132639	ob72	320°10'00"	A DP 132639	4.16	A DP 132639
PEG DP 121097	UNMK DP 121097	ob69	330°49'00"	A LT 121097	4.02	A LT 121097
UNMK DP 121097	PEG DP 121097	ob92	230°12'00"	A DP 132639	4.06	A DP 132639
UNMK DP 167674	UNMK DP 121097	ob60	330°49'00"	A LT 121097	17.25	C
UNMK DP 121097	UNMK DP 121097	ob98	20°58'50"	A LT 121097	78.64	A LT 121097
UNMK DP 121097	UNMK DP 121097	ob99	19°52'00"	A LT 121097	32.15	A LT 121097
UNMK DP 121097	UNMK DP 121097	ob108	352°55'30"	A LT 121097	18.68	A LT 121097
UNMK DP 121097	UNMK DP 121097	ob100	329°32'40"	A LT 121097	96.93	A LT 121097
UNMK DP 121097	UNMK DP 121097	ob101	247°48'00"	A LT 121097	20.67	A LT 121097
UNMK DP 121097	UNMK DP 121097	ob102	260°57'20"	A LT 121097	20.11	A LT 121097
UNMK DP 121097	PEG DP 121097	ob103	350°57'20"	A LT 121097	4.00	A LT 121097
PEG DP 121097	PEG DP 121097	ob104	80°57'20"	A LT 121097	19.65	A LT 121097
PEG DP 121097	PEG DP 121097	ob105	67°48'00"	A LT 121097	23.67	A LT 121097
PEG DP 121097	IS VI DP 121097	ob106	147°58'00"	A LT 121097	18.52	A LT 121097
PEG DP 121097	PEG DP 121097	ob107	149°32'40"	A LT 121097	101.22	A LT 121097
PEG DP 121097	PEG DP 121097	ob109	172°55'30"	A LT 121097	20.47	A LT 121097
PEG DP 121097	PEG DP 121097	ob110	199°52'00"	A LT 121097	33.14	A LT 121097
PEG DP 121097	UNMK DP 121097	ob111	200°58'50"	A LT 121097	4.85	A LT 121097
UNMK DP 121097	PEG DP 121097	ob113	200°58'50"	A LT 121097	71.96	A LT 121097
PEG DP 121097	UNMK DP 132639	ob115	150°49'00"	A LT 121097	13.21	A DP 132639
PEG DP 121097	PEG DP 132639	ob112	76°32'30"	A LT 121097	32.87	A DP 132639
UNMK DP 121097	UNMK DP 132639	ob114	76°32'30"	A LT 121097	34.69	A DP 132639
IS VI DP 121097	IS 1 DP 440457	ob6	142°07'40"	M	75.11	M
IS 1 DP 440457	ALPL 2 DP 440457	ob116	193°54'10"	M	108.82	M
ALPL 2 DP 440457	IS 3 DP 440457	ob117	336°07'30"	M	18.61	M
IS 3 DP 440457	IT V DP 121097	ob125	42°37'00"	M	44.63	M
ALPL 2 DP 440457	ALPL 4 DP 440457	ob118	73°21'00"	M	13.20	M

# Mark and Vector

Survey Number DP 440457  
Coordinate System Mount Eden 2000

From	To	Code	Bearing	Adpt Surv	Distance	Adpt Surv
ALPL 4 DP 440457	IS 3 DP 440457	ob126	303°14'00"	M	24.12	M
ALPL 4 DP 440457	ABD 4A DP 440457	ob127	140°14'00"	M	2.76	M
PEG 2A DP 440457	PEG 2B DP 440457	ob129	161°25'00"	C	2.90	C
PEG 2B DP 440457	PEG 2C DP 440457	ob131	238°04'00"	C	7.58	C
PEG 2C DP 440457	PEG 2D DP 440457	ob132	261°49'00"	C	17.20	C
PEG 2D DP 440457	PEG 2E DP 440457	ob133	229°20'00"	C	10.88	C
ALPL 2 DP 440457	PEG DP 121118	ob119	73°22'00"	M	46.97	M
ALPL 2 DP 440457	PEG 2A DP 440457	ob120	73°40'00"	M	44.04	M
ALPL 2 DP 440457	PEG 2B DP 440457	ob121	77°25'00"	M	44.25	M
ALPL 2 DP 440457	PEG 2C DP 440457	ob122	81°18'00"	M	37.18	M
ALPL 2 DP 440457	PEG 2D DP 440457	ob123	80°50'00"	M	19.98	M
ALPL 2 DP 440457	PEG 2E DP 440457	ob124	108°48'00"	M	12.12	M
PEG 1J DP 375323	PEG DP 77947	ob134	71°08'40"	A DP 77947	63.97	A DP 375323
POST DP 121118	POST DP 121118	ob90	336°51'00"	A DP 121118	49.14	A DP 121118
POST DP 121118	UNMK DP 132639	ob135	291°24'00"	A DP 121118	13.65	C
UNMK 5 DP 440457	PEG DP 121097	ob136	282°54'00"	A LT 121097	0.98	C
PEG DP 121097	POST DP 121118	ob51	160°10'00"	A LT 121097	34.47	A DP 121118
POST DP 121118	UNMK DP 121118	ob138	160°10'00"	A LT 121097	40.44	A DP 121118
UNMK DP 121118	UNMK DP 121118	ob140	64°21'00"	A DP 121118	14.72	A DP 121118
UNMK DP 121118	UNMK 5 DP 440457	ob142	50°20'00"	A DP 121118	58.75	C
UNMK 6 DP 440457	UNMK DP 132639	ob143	349°31'00"	A LT 121097	15.15	C
POST DP 121118	UNMK 6 DP 440457	ob139	61°57'00"	A DP 121118	55.38	C
PEG DP 132639	POST DP 121118	ob95	337°36'00"	A DP 121118	31.39	A DP 121118
UNMK 7 DP 440457	UNMK DP 132639	ob145	349°31'00"	A LT 121097	8.65	C
UNMK 6 DP 440457	UNMK 7 DP 440457	ob144	61°57'00"	A DP 121118	4.19	C
UNMK 7 DP 440457	IS II DP 121097	ob146	61°57'00"	A DP 121118	5.58	C
UNMK 5 DP 440457	POST DP 121118	ob137	50°20'00"	A DP 121118	3.70	C
POST DP 121118	PEG DP 132639	ob147	321°58'00"	A DP 132639	1.68	A DP 132639
UNMK DP 132639	PEG DP 132639	ob70	140°10'00"	A DP 132639	1.71	A DP 132639
PEG DP 132639	PEG DP 121097	ob148	47°48'00"	A DP 132639	5.22	A DP 132639

\*\*\* End of Report \*\*\*

DP 440457 EASEMENT SCHEDULE

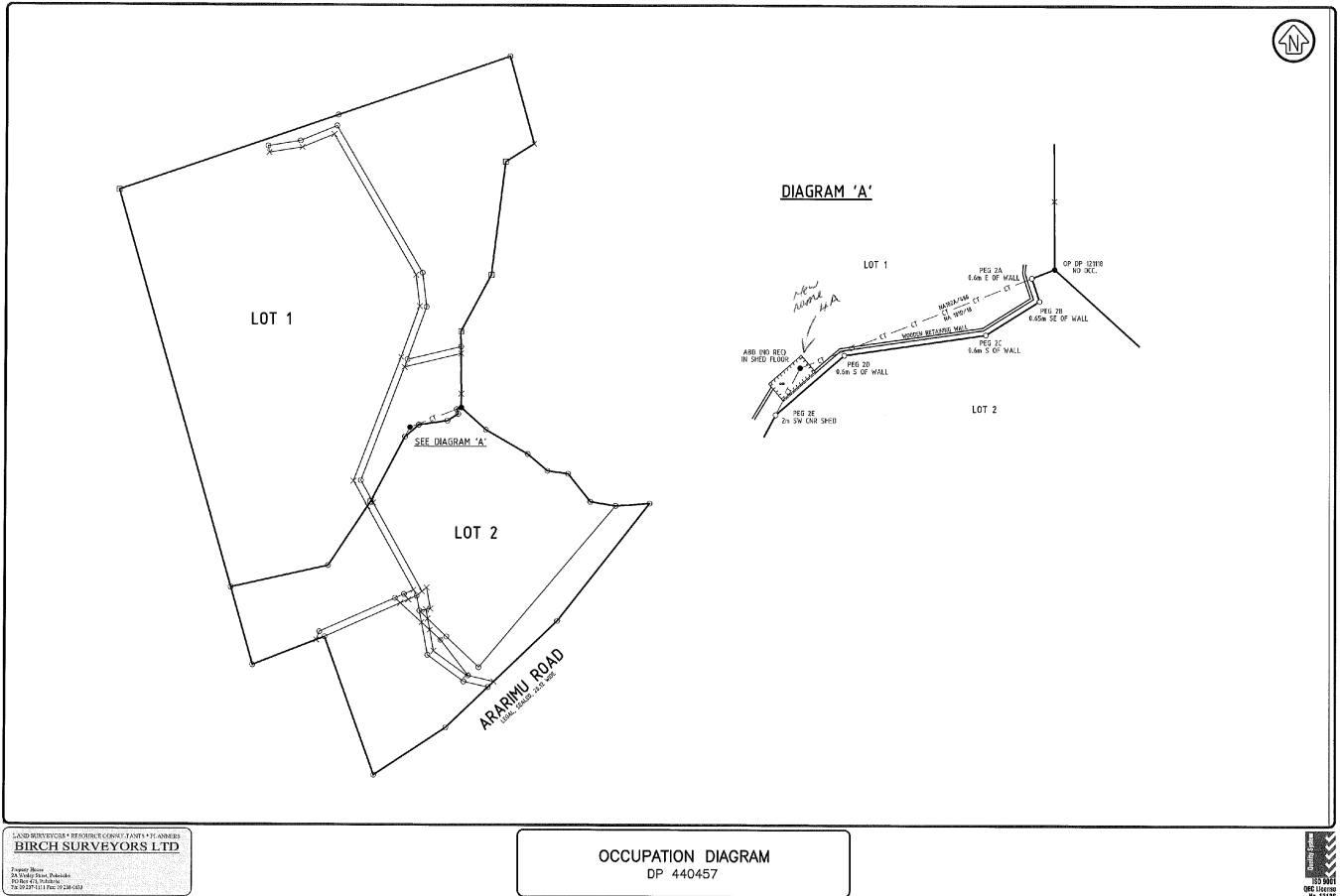
EXISTING EASEMENTS			
SHOWN	PURPOSE	SERVIENT TENEMENT	CREATED BY
'L'	ELECTRICITY	LOT 2 DP 440457	T. B855495.6
'L'	ELECTRICITY & WATER SUPPLY	LOT 2 DP 440457	T. C897420.3 EC. C088141.4
'M'	WATER SUPPLY	LOT 1 DP 440457	EC. C088141.4
'O', 'V' & 'W'	WATER SUPPLY	LOT 2 DP 440457	T. B855495.6
'A', 'P' & 'F'	ELECTRICITY	LOT 2 DP 440457	T. B855495.6 EC. C088141.4
'Q'	ELECTRICITY & WATER SUPPLY	LOT 1 DP 440457	T. B855495.6 EC. C088141.4
'R,S'	ELECTRICITY	LOT 2 DP 440457	T. B855495.6 EC. C088141.4
'U'	ELECTRICITY	LOT 2 DP 440457	T. B855495.6 EC. C088141.4
'R' & 'U'	WATER SUPPLY	LOT 2 DP 440457	EC. C088141.4
'W', 'X' & 'Z'	RIGHT OF WAY, SERVICES	LOT 2 DP 440457	EC. C088141.4
'Y'	ELECTRICITY	LOT 2 DP 440457	T. B855495.6
'Y'	RIGHT OF WAY, SERVICES & ELECTRICITY	LOT 2 DP 440457	EC. C088141.4

EXISTING OPEN SPACE COVENANTS

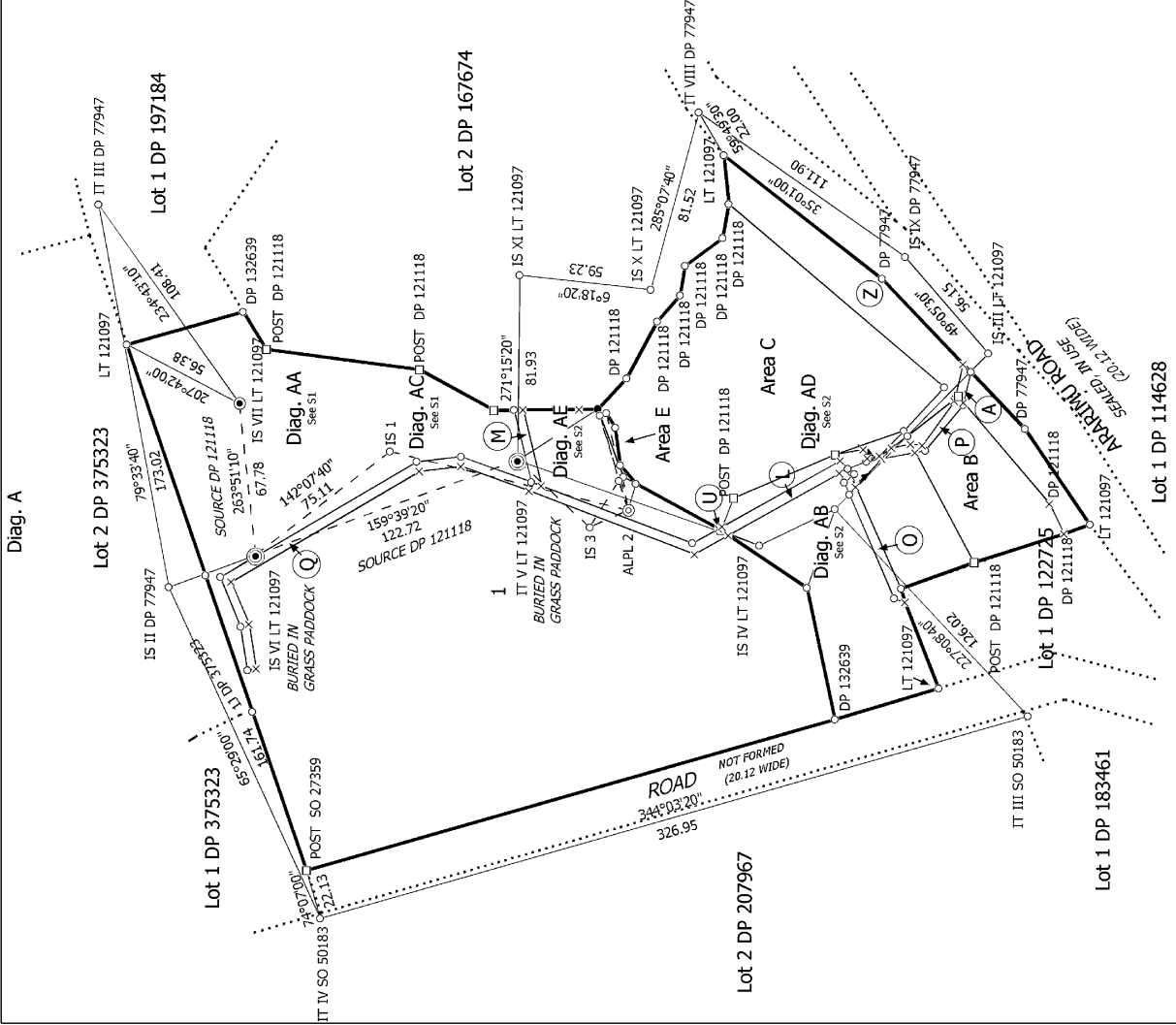
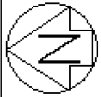
SHOWN	SERVIENT TENEMENT	CREATED BY
AREA E	LOT 1 DP 440457	B855495.3
AREA B	LOT 2 DP 440457	
'P'		
AREA D		
AREA C		
'U'		

BSL REF: 2967

# Occupation Diagram







Diag. AA

Diag. AC

Diag. A

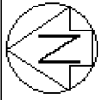
S 1/2

CSD Plan  
 DP 440457  
 Deposited on: 28/09/2011

Surveyor: John William Maags  
 Firm: Birch Surveyors Ltd  
 Survey Date: 21/02/2011

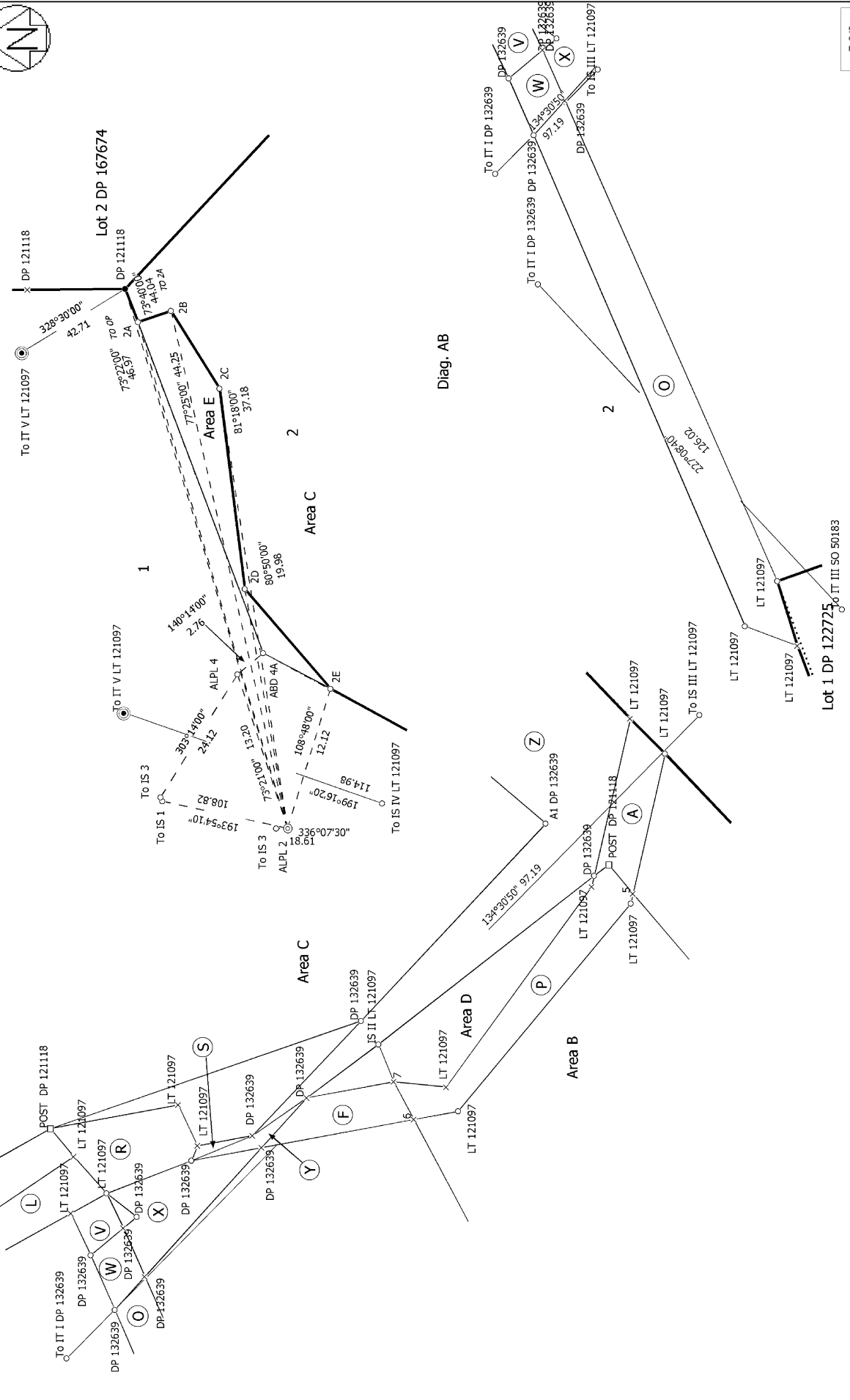
LOTS 1 & 2 FORMERLY BEING LOT 1 DP 170528 & LOT 1 DP 167674

Land District: North Auckland  
 Digitally Generated Plan  
 Generated on: 06/10/2011 09:46am Page 9 of 12



Diag. AE

2Diag. AD



S 2/2

Land District: North Auckland

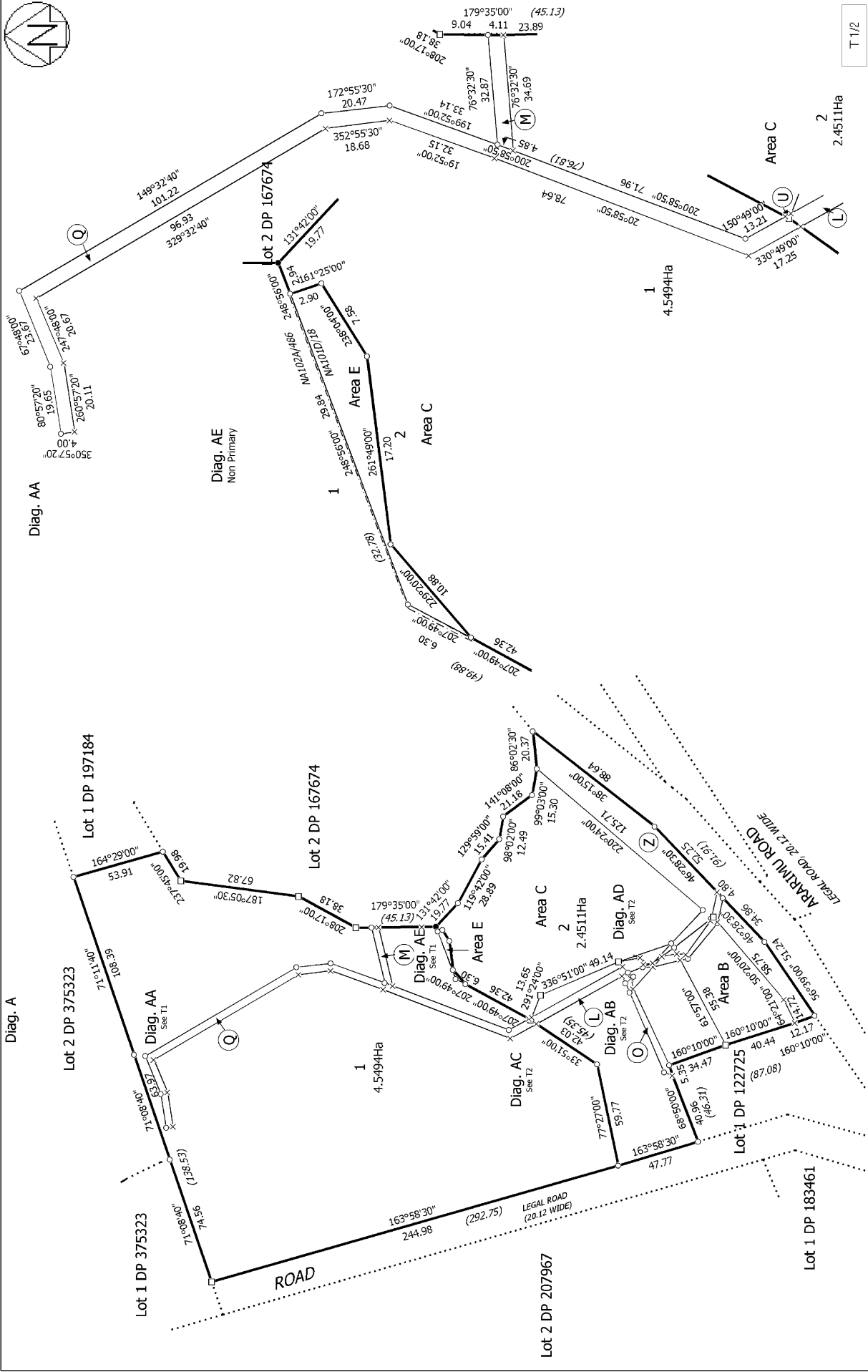
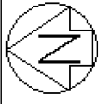
Digitally Generated Plan  
Generated on: 06/10/2011 09:46am Page 10 of 12

Surveyor: John William Maags  
Firm: Birch Surveyors Ltd  
Survey Date: 21/02/2011

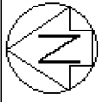
**LOTS 1 & 2 FORMERLY BEING LOT 1 DP 170528 & LOT 1 DP 167674**

**CSD Plan  
DP 440457**

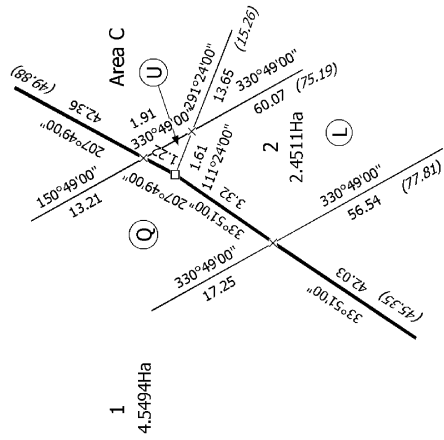
Deposited on: 28/09/2011



<p>Surveyor: John William Maags Firm: Birch Surveyors Ltd Survey Date: 21/02/2011</p>	<p><b>CSD Plan DP 440457</b></p>	<p>Deposited on: 28/09/2011</p>
<p><b>LOTS 1 &amp; 2 FORMERLY BEING LOT 1 DP 170528 &amp; LOT 1 DP 167674</b></p>		
<p>Land District: North Auckland Digitally Generated Plan Generated on: 06/10/2011 09:46am Page 11 of 12</p>		

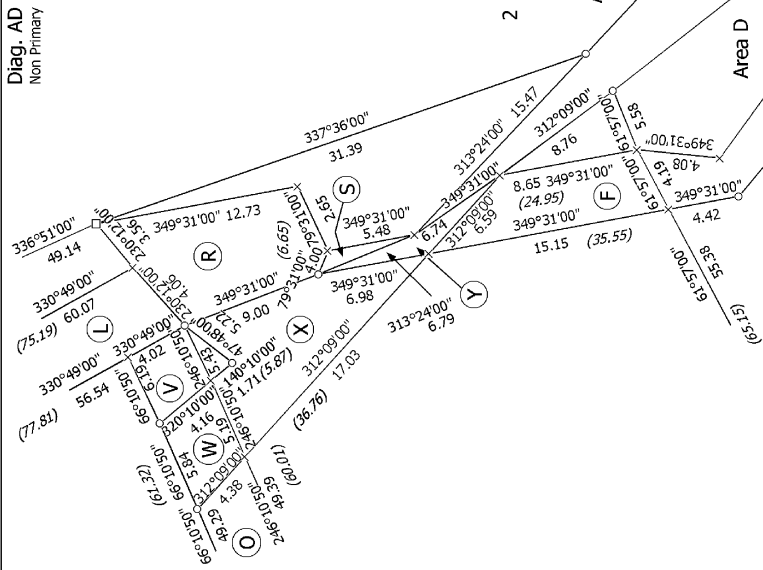


Diag. AC



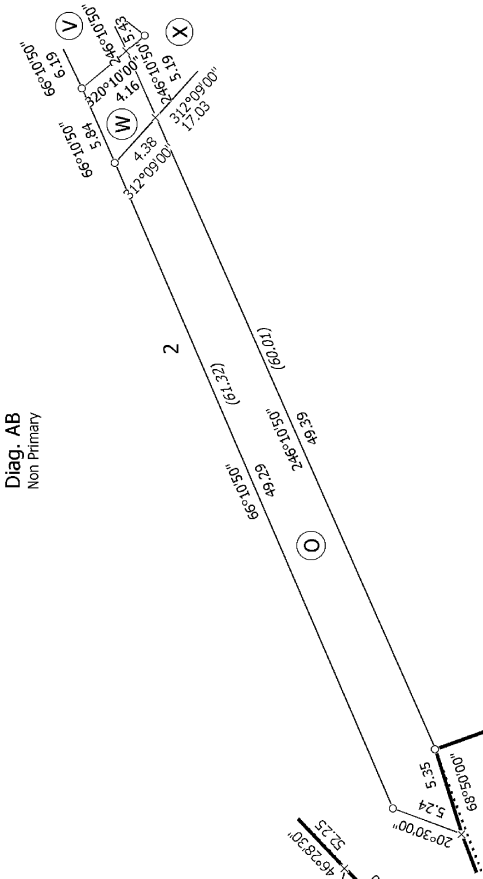
1  
4.5494Ha

Diag. AD  
Non Primary



T 2/2

Diag. AB  
Non Primary



Lot 1 DP 122725

LOTS 1 & 2 FORMERLY BEING LOT 1 DP 170528 & LOT 1 DP 167674

Land District: North Auckland

Surveyor: John William Maags

CSD Plan  
DP 440457

Firm: Birch Surveyors Ltd

Survey Date: 21/02/2011

Deposited on: 23/09/2011

Digitally Generated Plan

Generated on: 06/10/2011 09:46am Page 12 of 12