



# CSD Plan - DP 463825

---

**Survey Number** DP 463825  
**Surveyor Reference** 45 Cargill St  
**Surveyor** Donald Neil McKinnon  
**Survey Firm** School of Surveying (University of Otago)  
**Surveyor Declaration** I Donald Neil McKinnon, being a licensed cadastral surveyor, certify that:  
(a) this dataset provided by me and its related survey are accurate, correct and in accordance with the Cadastral Survey Act 2002 and the Rules for Cadastral Survey 2010, and  
(b) the survey was undertaken by me or under my personal direction.  
Declared on 03 Dec 2013 01:20 PM

---

## Survey Details

**Dataset Description** Lot 1 Being Parts Sections 16 & 17 Block XX Town of Dunedin  
**Purpose** Limited Title  
**Status** Deposited **Type** Survey  
**Land District** Otago **Survey Class** Class A  
**Meridional Circuit** North Taieri 2000

---

## Survey Dates

**Surveyed Date** 09/04/2013 **Certified Date** 03/12/2013  
**Submitted Date** 03/12/2013 13:20:44 **Survey Approval Date** 04/12/2013  
**Deposit Date** 09/05/2014

---

## Referenced Surveys

Survey Number	Land District	Bearing Correction
DP 10869	Otago	-0°00'42"
DP 12877	Otago	-0°01'20"
DP 8197	Otago	-0°00'42"
SO 17121	Otago	-0°01'20"

---

## Territorial Authorities

Dunedin City

---

## Comprised In

CT OT282/58 Ltd  
CT OT282/59 Ltd

---

## Created Parcels

Parcels	Parcel Intent	Area	CT Reference
Lot 1 Deposited Plan 463825	Fee Simple Title	0.0568 Ha	614679
Part Section 17 Block XX Town of Dunedin	Residue Parcel	0.0934 Ha	
<b>Total Area</b>		<u>0.1502 Ha</u>	

# Mark and Vector

**Survey Number** DP 463825  
**Coordinate System** North Taieri 2000

From	To	Code	Bearing		Adpt Surv	Distance		Adpt Surv
Survey School Otago University	SM 6 SO 22910	ob0	297°51'14"	M		589.00	M	
Survey School Otago University	IT 20 SO 22910	ob1	229°11'32"	M		1,066.66	M	
Survey School Otago University	IT 3 DP 463825	ob2	264°48'35"	M		681.36	M	
Survey School Otago University	3C ST 11	ob3	259°47'09"	M		736.28	M	
Survey School Otago University	SS 1(5L ST11 Dist) DP 463825	ob4	267°17'10"	M		766.08	M	
Survey School Otago University	2C ST 11	ob5	263°52'18"	M		565.15	M	
Survey School Otago University	II SO17121	ob6	273°13'32"	M		603.60	M	
3C ST 11	IT I DP 10869	ob14	66°39'00"	M		67.90	A	DP 10869
IT I DP 10869	IS II DP 8197	ob21	66°39'00"	M		29.81	C	
IS II DP 8197	2C ST 11	ob23	66°39'00"	M		79.49	A	DP 8197
2C ST 11	II SO17121	ob18	336°38'40"	M		102.71	M	
II SO17121	4L ST 11	ob20	246°38'00"	M		25.85	M	
4L ST 11	IS III DP 12877	ob25	246°38'00"	M		63.48	M	
IS III DP 12877	IS I DP 12877	ob26	246°38'00"	M		37.11	M	
IS I DP 12877	SS 1(5L ST11 Dist) DP 463825	ob28	246°38'00"	M		50.66	M	
SS 1(5L ST11 Dist) DP 463825	SS 2(2H ST11 Dist) DP 463825	ob17	156°37'30"	M		39.62	M	
SS 2(2H ST11 Dist) DP 463825	3C ST 11	ob29	156°44'30"	M		63.04	M	
IS III DP 12877	IS IV DP 12877	ob27	160°06'10"	A	DP 12877	50.23	A	DP 12877
IS IV DP 12877	IS V DP 12877	ob31	246°38'20"	A	DP 12877	14.58	A	DP 12877
IS V DP 12877	IS VI DP 12877	ob33	260°53'40"	A	DP 12877	16.48	A	DP 12877
IS VI DP 12877	IS I DP 12877	ob34	332°15'00"	A	DP 12877	46.22	A	DP 12877
IT I DP 10869	IS IV DP 10869	ob22	319°34'20"	A	DP 10869	26.99	A	DP 10869
IS II DP 8197	PEG IX DP 8197	ob24	336°39'00"	A	DP 8197	0.91	A	DP 8197
IS IV DP 10869	PEG IVb DP 10869	ob35	353°55'20"	A	DP 10869	26.59	A	DP 10869
PEG IVb DP 10869	DISK B DP 463825	ob37	156°46'20"	A	DP 10869	0.03	C	
DISK B DP 463825	DISK A DP 463825	ob39	156°46'20"	A	DP 10869	50.26	C	
DISK A DP 463825	IT I DP 10869	ob40	147°50'20"	A	DP 10869	0.92	A	DP 10869
DISK A DP 463825	DISK H DP 463825	ob41	66°39'00"	A	DP 10869	9.70	C	
DISK H DP 463825	UNMK Hi DP 463825	ob42	66°39'00"	A	DP 10869	0.60	C	
UNMK Hi DP 463825	PEG IX DP 8197	ob45	66°39'00"	A	DP 10869	19.65	C	

# Mark and Vector

Survey Number DP 463825  
Coordinate System North Taieri 2000

From	To	Code	Bearing	Adpt Surv	Distance	Adpt Surv
IS V DP 12877	PEG X DP 12877	ob32	156°38'00"	A DP 12877	1.38	A DP 12877
IS IV DP 12877	PEG IX DP 12877	ob30	84°39'40"	A DP 12877	4.48	A DP 12877
DISK B DP 463825	PEG X DP 12877	ob38	66°38'20"	A DP 12877	2.39	C
UNMK Ci DP 463825	PEG IX DP 12877	ob46	66°38'20"	A DP 12877	9.93	C
UNMK Hi DP 463825	PEG I DP 463825	ob44	338°43'00"	C	6.57	C
3C ST 11	NAIL 8 DP 463825	ob15	79°57'40"	M	73.32	M
NAIL 8 DP 463825	NAIL I DP 373185	ob54	79°57'40"	M	6.51	M
NAIL I DP 373185	IS 1 DP 463825	ob55	328°18'30"	M	32.03	M
IS 1 DP 463825	NAIL 2 DP 463825	ob59	316°06'00"	M	13.72	M
NAIL 2 DP 463825	IT 3 DP 463825	ob60	340°49'00"	M	18.92	M
IT 3 DP 463825	IS 4 DP 463825	ob11	73°52'30"	M	12.64	M
IS 4 DP 463825	IS 5 DP 463825	ob61	153°23'30"	M	30.83	M
IS 5 DP 463825	IS 6 DP 463825	ob62	124°51'30"	M	36.70	M
IS 6 DP 463825	NAIL I DP 373185	ob63	247°00'00"	M	25.54	M
2C ST 11	IS 6 DP 463825	ob19	232°35'00"	M	76.26	M
NAIL I DP 373185	IT 7 DP 463825	ob56	308°43'00"	M	20.73	M
IT 7 DP 463825	IT I DP 10869	ob64	290°08'00"	C	0.10	C
IT 3 DP 463825	PEG X DP 12877	ob7	342°51'00"	M	6.15	M
PEG IX DP 8197	PEG XIV DP 8197	ob36	336°39'00"	A DP 8197	50.29	A DP 8197
PEG XIV DP 8197	PEG IX DP 12877	ob65	246°24'00"	C	8.61	C
UNMK Ci DP 463825	PEG C DP 463825	ob47	156°15'00"	C	0.50	C
PEG C DP 463825	DISK E DP 463825	ob66	156°15'00"	C	29.05	C
DISK E DP 463825	DISK F DP 463825	ob67	158°08'00"	C	2.69	C
DISK F DP 463825	PEG G DP 463825	ob68	157°21'00"	C	11.44	C
NAIL 8 DP 463825	DISK A DP 463825	ob49	325°14'00"	M	18.15	M
NAIL 8 DP 463825	DISK H DP 463825	ob50	355°36'00"	M	18.81	M
NAIL 8 DP 463825	PEG I DP 463825	ob51	352°34'00"	M	25.33	M
NAIL 8 DP 463825	PEG G DP 463825	ob52	354°26'30"	M	25.59	M
IS 1 DP 463825	DISK F DP 463825	ob57	24°50'00"	M	8.42	M
IS 1 DP 463825	DISK E DP 463825	ob58	14°02'00"	M	10.45	M
IT 3 DP 463825	DISK B DP 463825	ob8	320°57'00"	M	6.37	M
IT 3 DP 463825	PEG C DP 463825	ob9	36°12'00"	M	11.11	M
IT 3 DP 463825	UNMK Ci DP 463825	ob10	34°02'00"	C	11.37	C
NAIL 8 DP 463825	UNMK Hi DP 463825	ob53	357°26'00"	C	19.03	C
PEG X DP 12877	UNMK Ci DP 463825	ob43	66°38'20"	A DP 12877	8.91	C
PEG I DP 463825	PEG G DP 463825	ob48	66°10'00"	C	0.87	C

Mark Name	Description
IT 7 DP 463825	OIT I DP 10869 disturbed

# Mark and Vector

**Survey Number** DP 463825

**Coordinate System** North Taieri 2000

Mark Name	Description
Survey School Otago U	Threaded stainless steel pin in concrete pillar on roof of Survey School. Occupied by continuous GPS

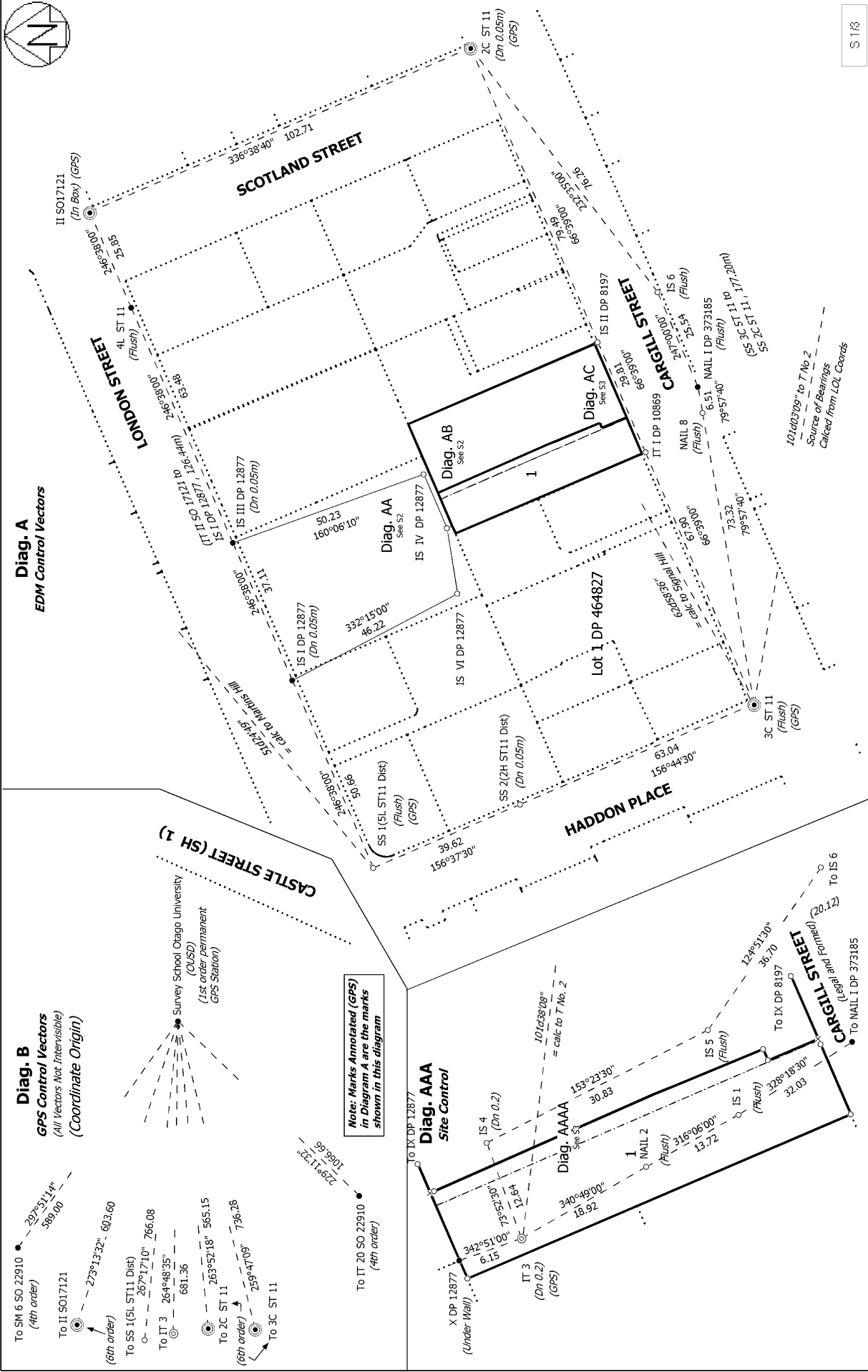
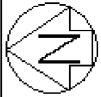
**\*\*\* End of Report \*\*\***

**DP 463825**

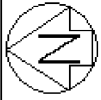
**Lot 1 Being Pt's Sections 16 and 17 Block XX Town of Dunedin**

<b>Schedule of Existing Easements</b>			
<b>Purpose</b>	<b>Document Number</b>	<b>Servient Tenement</b>	<b>Dominant Tenement</b>
Right to drain sewage and water	T.345119	Lot 1 DP 463825	Lots 1 & 2 DP 12877



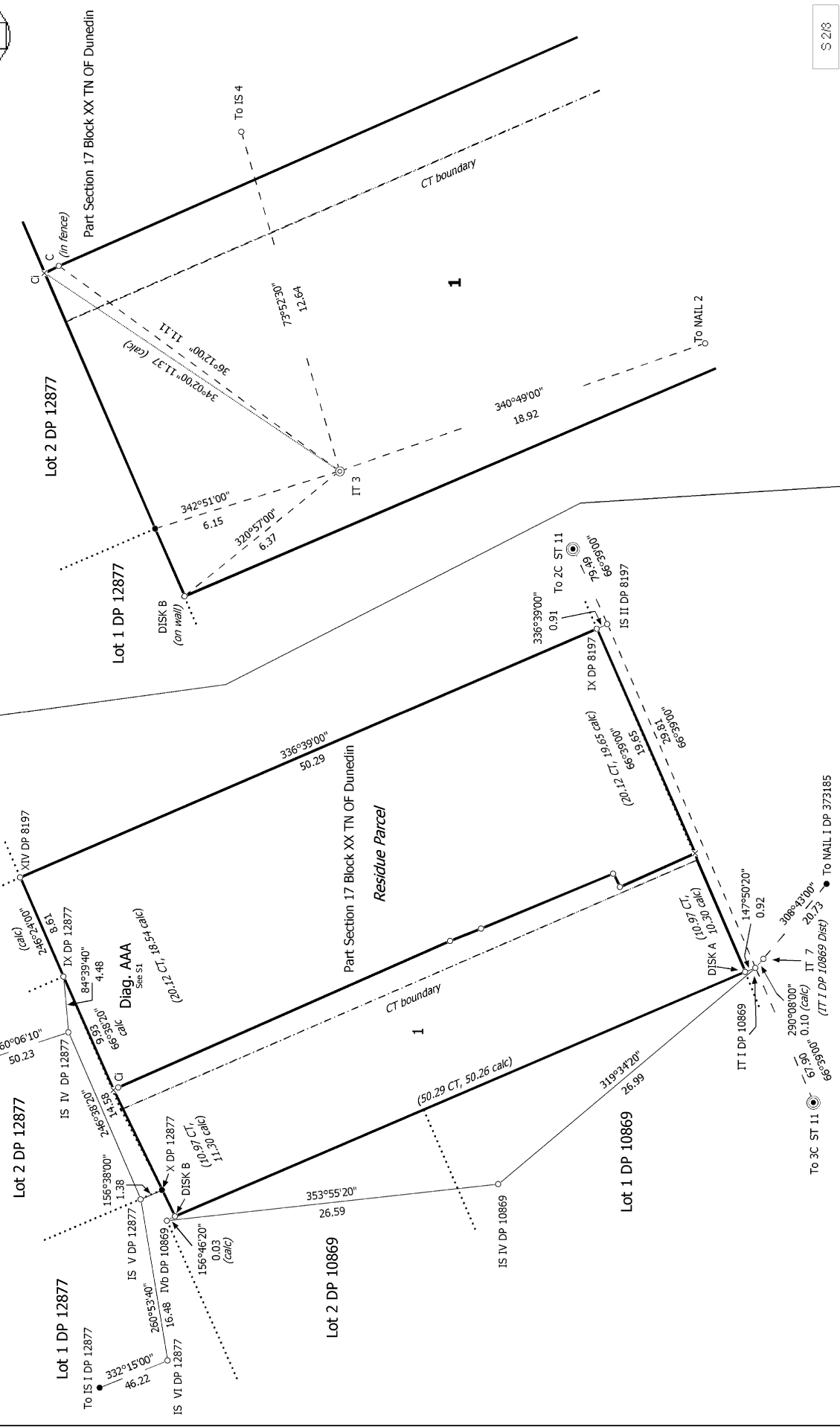


<p>Land District: Otago</p>	<p>Lot 1 Being Parts Sections 16 &amp; 17 Block XX Town of Dunedin</p>	<p>CSD Plan DP 463825</p>
<p>Digitally Generated Plan Generated on: 06/10/2014 10:25am Page 7 of 10</p>	<p>Surveyor: Donald Neil McKinnon Firm: School of Surveying (University of Otago) Survey Date: 9/04/2013</p>	<p>Deposited on: 9/05/2014</p>



**Diag. AA**  
Site Adoptions

**Diag. AB**  
Pegging Ties



S 218

Land District: Otago

**Digitally Generated Plan**  
Generated on: 06/10/2014 10:25am Page 6 of 10

**Lot 1 Being Parts Sections 16 & 17 Block XX Town of Dunedin**

Surveyor: Donald Neil McKinnon  
Firm: School of Surveying (University of Otago)  
Survey Date: 9/04/2013

CSD Plan DP 463825 Deposited on: 9/05/2014





