



# CSD Plan - DP 485346

---

**Survey Number** DP 485346  
**Surveyor Reference** 315638 - H.J.T. Developments Limited  
**Surveyor** Todd Adam Shuker  
**Survey Firm** The Surveying Company Ltd (Pukekohe)  
**Surveyor Declaration** I Todd Adam Shuker, being a licensed cadastral surveyor, certify that:  
(a) this dataset provided by me and its related survey are accurate, correct and in accordance with the Cadastral Survey Act 2002 and the Rules for Cadastral Survey 2010, and  
(b) the survey was undertaken by me or under my personal direction.  
Declared on 30 Apr 2015 05:36 PM

---

## Survey Details

**Dataset Description** LOTS 1 - 7 BEING A SUBDIVISION OF PART ALLOTMENT 128 SUBURBAN SECTION 2 PARISH OF PUKEKOHE  
**Purpose** LT Subdivision  
**Status** Deposited  
**Land District** North Auckland  
**Meridional Circuit** Mount Eden 2000  
**Type** Survey  
**Survey Class** Class A

---

## Survey Dates

**Surveyed Date** 02/03/2015  
**Submitted Date** 30/04/2015 17:36:53  
**Deposit Date** 31/07/2015  
**Certified Date** 30/04/2015  
**Survey Approval Date** 12/05/2015

---

## Referenced Surveys

Survey Number	Land District	Bearing Correction
DP 78989	North Auckland	0°00'00"
DP 14357	North Auckland	0°00'00"
DP 111575	North Auckland	0°00'00"
DP 97497	North Auckland	0°00'00"
DP 105201	North Auckland	0°00'00"
SO 34693	North Auckland	0°00'00"
DP 198234	North Auckland	0°00'00"
DP 427410	North Auckland	0°00'00"
DP 437422	North Auckland	0°00'00"
DP 49103	North Auckland	0°00'00"

---

## Territorial Authorities

Auckland

---

## Comprised In

CT NA1117/49 Ltd

---

## Created Parcels

Parcels	Parcel Intent	Area	CT Reference
Lot 1 Deposited Plan 485346	Fee Simple Title	0.0521 Ha	689657

---



# CSD Plan - DP 485346

---

## Created Parcels

Parcels	Parcel Intent	Area	CT Reference
Lot 2 Deposited Plan 485346	Fee Simple Title	0.0537 Ha	689658
Lot 3 Deposited Plan 485346	Fee Simple Title	0.0639 Ha	689659
Lot 4 Deposited Plan 485346	Fee Simple Title	0.0653 Ha	689660
Lot 5 Deposited Plan 485346	Fee Simple Title	0.0708 Ha	689661
Lot 6 Deposited Plan 485346	Fee Simple Title	0.0770 Ha	689662
Lot 7 Deposited Plan 485346	Fee Simple Title	0.6152 Ha	689663
Part Allotment 128 Suburban Section 2 Parish of Pukekohe	Residue Parcel		
Area A Deposited Plan 485346	Easement		
Area B Deposited Plan 485346	Easement		
Area C Deposited Plan 485346	Easement		
<b>Total Area</b>		<hr/> 0.9980 Ha	

# Mark and Vector

Survey Number DP 485346  
Meridional Circuit Mount Eden 2000

From	To	Code	Bearing		Adpt Surv	Distance		Adpt Surv
IT 5 DP 427410	CP III DP 105201	ob7	167°39'10"	M		153.30	M	
IT 5 DP 427410	IT VI DP 198234	ob8	61°07'50"	M		160.83	M	
IT 5 DP 427410	IT XII SO 34693	ob9	354°18'10"	M		51.43	M	
IT 5 DP 427410	IT 3 DP 485346	ob10	348°14'20"	M		100.35	M	
IT 5 DP 427410	IT 1 DP 485346	ob11	27°47'20"	M		117.11	M	
IT 5 DP 427410	IT 2 DP 485346	ob12	44°09'10"	M		194.33	M	
IT 5 DP 427410	IS IV DP 198234	ob13	23°41'00"	A	DP 437422	20.77	A	DP 437422
IS IV DP 198234	IT V DP 198234	ob0	48°41'50"	A	DP 198234	63.91	A	DP 198234
IT V DP 198234	IT VI DP 198234	ob23	78°59'30"	A	DP 437422	86.07	A	DP 437422
IT VI DP 198234	IT VII DP 198234	ob16	158°37'20"	A	DP 198234	34.90	A	DP 198234
IT VII DP 198234	IT III DP 198234	ob22	167°15'30"	A	DP 198234	168.75	A	DP 198234
IT III DP 198234	IT VIII SO 34693	ob24	238°58'00"	A	DP 198234	12.58	A	DP 198234
IT VIII SO 34693	IS (4) SO 34693	ob2	350°17'40"	A	SO 34693	182.49	A	SO 34693
IS IV DP 198234	IT II DP 105201	ob1	161°53'20"	A	DP 437422	26.84	A	DP 437422
IT II DP 105201	CP III DP 105201	ob3	173°36'05"	A	DP 427410	144.18	A	DP 427410
IT 2 DP 485346	PEG VI SO 34693	ob101	346°51'00"	M		11.97	M	
CP III DP 105201	ALP 1 DP 427410	ob15	169°07'40"	A	DP 437422	120.28	A	DP 437422
ALP 1 DP 427410	IT III DP 198234	ob31	42°21'30"	A	DP 427410	200.88	A	DP 427410
IS (4) SO 34693	PEG VI SO 34693	ob21	350°17'40"	A	SO 34693	98.56	A	SO 34693
PEG VI SO 34693	IS (5) SO 34693	ob105	259°08'10"	A	SO 34693	87.69	A	SO 34693
IS (5) SO 34693	IS XIII SO 34693	ob25	259°08'10"	A	SO 34693	66.82	A	SO 34693
IS XIII SO 34693	IT XII SO 34693	ob29	168°47'20"	A	SO 34693	72.14	A	SO 34693
IS IV DP 198234	IT V DP 105201	ob4	341°53'20"	A	DP 427410	107.25	A	DP 427410
IT XII SO 34693	IT IX SO 34693	ob28	168°47'20"	A	SO 34693	314.02	A	SO 34693
IT IX SO 34693	IT VIII SO 34693	ob32	43°27'40"	A	DP 49103	180.32	A	DP 49103
IT 3 DP 485346	IT V DP 105201	ob64	348°42'00"	M		23.17	M	
IT V DP 105201	PEG (7) DP 105201	ob65	330°22'00"	A	DP 105201	8.15	A	DP 105201
PEG (7) DP 105201	AL. PEG (8) DP 105201	ob5	168°39'50"	A	DP 105201	131.00	A	DP 105201
AL. PEG (8) DP 105201	IT II DP 105201	ob33	106°56'00"	A	DP 105201	20.84	A	DP 105201
IS XIII SO 34693	IT XIV DP 111575	ob30	348°47'20"	A	DP 111575	205.01	A	DP 111575
IT XIV DP 111575	IS (9) DP 97497	ob34	146°12'00"	A	SO 34693	22.08	A	SO 34693
IS (9) DP 97497	PEG (50) DP 14357	ob36	5°18'30"	A	SO 34693	14.18	A	SO 34693
IT XIV DP 111575	PEG (117) DP 111575	ob35	217°13'00"	A	DP 111575	10.11	A	DP 111575
PEG (117) DP 111575	PEG (7) DP 105201	ob37	169°04'30"	A	DP 111575	190.42	A	DP 111575
IT 1 DP 485346	IT VI DP 198234	ob67	106°45'00"	M		90.07	M	
IT 1 DP 485346	IT 2 DP 485346	ob68	66°05'00"	M		88.35	M	
IT 1 DP 485346	IS (5) SO 34693	ob69	345°19'20"	M		32.00	M	
IT 2 DP 485346	IT VI DP 198234	ob102	174°55'40"	M		62.03	M	
IT 5 DP 427410	IT 4 DP 427410	ob14	64°50'00"	A	DP 437422	87.93	A	DP 437422
IT 4 DP 427410	IT VI DP 198234	ob50	56°40'50"	A	DP 437422	73.30	A	DP 437422
IT VI DP 198234	IS (4) SO 34693	ob17	160°31'00"	M		25.15	M	

# Mark and Vector

Survey Number DP 485346  
Meridional Circuit Mount Eden 2000

From	To	Code	Bearing	Adpt Surv	Distance	Adpt Surv
IT 9 DP 437422	IT 4 DP 427410	ob66	81°02'00"	A DP 437422	37.93	A DP 437422
IT VI DP 198234	PEG (6) DP 198234	ob18	68°27'00"	M	5.79	M
PEG (6) DP 198234	IT VII DP 198234	ob26	168°03'00"	A DP 198234	35.40	A DP 198234
PEG 2A DP 437422	IS IV DP 198234	ob38	177°12'30"	A DP 437422	33.19	A DP 437422
IT 2 DP 485346	PEG 32 DP 485346	ob103	355°02'00"	M	8.79	M
PEG 32 DP 485346	PEG VI SO 34693	ob106	325°54'00"	A SO 34693	3.50	A SO 34693
PEG 32 DP 485346	PEG 33 DP 485346	ob107	170°20'15"	A SO 34693	10.55	C
PEG 33 DP 485346	PEG (6) DP 198234	ob124	170°20'15"	A SO 34693	58.82	C
PEG (7) DP 105201	PEG 30 DP 485346	ob6	78°52'10"	C	20.12	C
PEG 2A DP 437422	PEG 17 DP 485346	ob39	348°39'50"	C	21.50	C
PEG 17 DP 485346	ABD 18 DP 485346	ob41	348°39'50"	C	2.00	C
ABD 18 DP 485346	PEG 19 DP 485346	ob42	348°39'50"	C	2.00	C
PEG 19 DP 485346	PEG 20 DP 485346	ob44	348°39'50"	C	20.71	C
PEG 20 DP 485346	PEG 21 DP 485346	ob46	348°39'50"	C	3.50	C
PEG 21 DP 485346	PEG 10 DP 485346	ob48	348°39'50"	C	20.08	C
PEG 10 DP 485346	PEG 30 DP 485346	ob113	348°39'50"	C	11.55	C
PEG 30 DP 485346	PEG (50) DP 14357	ob116	349°04'30"	C	190.36	C
IT 1 DP 485346	PEG 12 DP 485346	ob70	301°27'30"	M	42.32	M
IT 1 DP 485346	PEG 13 DP 485346	ob71	344°08'00"	M	28.72	M
IT 1 DP 485346	PEG 14 DP 485346	ob72	12°10'00"	M	31.17	M
IT 2 DP 485346	PEG 16 DP 485346	ob104	347°33'00"	M	9.10	M
IT VI DP 198234	PEG 15 DP 485346	ob19	332°29'00"	M	73.63	M
PEG 31 DP 485346	IT 9 DP 437422	ob108	166°11'00"	A DP 437422	27.20	A DP 437422
PEG 2A DP 437422	PEG 31 DP 485346	ob40	78°48'30"	A DP 437422	29.45	A DP 437422
PEG 1D DP 437422	IT 4 DP 427410	ob110	143°04'00"	A DP 437422	31.80	A DP 437422
PEG 31 DP 485346	PEG 37 DP 485346	ob109	78°48'30"	A DP 437422	0.60	C
PEG 37 DP 485346	PEG 1D DP 437422	ob125	78°48'30"	A DP 437422	24.74	C
PEG 1D DP 437422	PEG (6) DP 198234	ob111	78°48'30"	A DP 198234	87.42	A DP 437422
PEG 10 DP 485346	PEG 11 DP 485346	ob114	77°44'00"	C	5.01	C
PEG 11 DP 485346	PEG 12 DP 485346	ob115	78°55'00"	C	21.00	C
PEG 12 DP 485346	PEG 13 DP 485346	ob117	78°55'00"	C	28.79	C
PEG 13 DP 485346	PEG 14 DP 485346	ob118	78°55'00"	C	14.70	C
PEG 14 DP 485346	PEG 15 DP 485346	ob119	79°00'00"	C	46.51	C
PEG 15 DP 485346	PEG 16 DP 485346	ob121	78°36'00"	C	27.11	C
PEG 16 DP 485346	PEG 32 DP 485346	ob120	96°06'00"	C	1.21	C
PEG 1D DP 437422	PEG 26 DP 485346	ob112	348°40'00"	C	23.64	C
PEG 26 DP 485346	PEG 27 DP 485346	ob59	348°40'00"	C	22.70	C
PEG 27 DP 485346	UNMK 44 DP 485346	ob60	348°40'00"	C	2.00	C
UNMK 44 DP 485346	PEG 13 DP 485346	ob133	348°40'00"	C	21.45	C
PEG 21 DP 485346	PEG 22 DP 485346	ob49	78°40'00"	C	24.01	C
PEG 22 DP 485346	UNMK 41 DP 485346	ob51	33°40'00"	C	0.58	C
UNMK 41 DP 485346	UNMK 42 DP 485346	ob128	33°40'00"	C	2.05	C
UNMK 42 DP 485346	PEG 23 DP 485346	ob130	33°40'00"	C	0.20	C

# Mark and Vector

**Survey Number** DP 485346  
**Meridional Circuit** Mount Eden 2000

From	To	Code	Bearing	Adpt Surv	Distance	Adpt Surv
PEG 23 DP 485346	PEG 12 DP 485346	ob52	348°40'00"	C	18.06	C
PEG 20 DP 485346	PEG 39 DP 485346	ob47	78°40'00"	C	26.01	C
PEG 39 DP 485346	UNMK 43 DP 485346	ob61	78°40'00"	C	0.83	C
UNMK 43 DP 485346	PEG 27 DP 485346	ob132	78°40'00"	C	27.96	C
ABD 18 DP 485346	PEG 29 DP 485346	ob43	78°39'30"	C	33.47	C
PEG 29 DP 485346	PEG 26 DP 485346	ob62	78°39'30"	C	21.33	C
PEG 19 DP 485346	PEG 28 DP 485346	ob45	78°40'00"	C	24.01	C
PEG 28 DP 485346	PEG 38 DP 485346	ob53	33°40'00"	C	2.83	C
PEG 38 DP 485346	PEG 39 DP 485346	ob54	348°40'00"	C	18.71	C
PEG 38 DP 485346	UNMK 40 DP 485346	ob55	78°40'00"	C	3.37	C
UNMK 40 DP 485346	PEG 29 DP 485346	ob63	123°00'00"	C	5.72	C
PEG 37 DP 485346	PEG 36 DP 485346	ob126	348°40'00"	C	5.62	C
PEG 36 DP 485346	PEG 25 DP 485346	ob127	346°11'00"	C	13.96	C
PEG 25 DP 485346	PEG 24 DP 485346	ob56	291°49'00"	C	3.67	C
PEG 24 DP 485346	PEG 17 DP 485346	ob58	258°40'00"	C	26.38	C
PEG 25 DP 485346	PEG 29 DP 485346	ob57	33°41'00"	C	5.67	C
PEG (6) DP 198234	PEG 35 DP 485346	ob27	348°45'00"	C	7.61	C
PEG 35 DP 485346	PEG 34 DP 485346	ob122	350°04'00"	C	27.92	C
PEG 34 DP 485346	PEG 33 DP 485346	ob123	351°14'00"	C	23.31	C
IT 1 DP 485346	PEG 17 DP 485346	ob73	239°46'30"	M	60.30	M
IT 1 DP 485346	ABD 18 DP 485346	ob74	241°35'30"	M	59.68	M
IT 1 DP 485346	PEG 19 DP 485346	ob75	243°27'00"	M	59.13	M
IT 1 DP 485346	PEG 20 DP 485346	ob76	263°51'30"	M	57.30	M
IT 1 DP 485346	PEG 21 DP 485346	ob77	267°19'30"	M	57.72	M
IT 1 DP 485346	PEG 22 DP 485346	ob78	273°24'00"	M	34.18	M
IT 1 DP 485346	PEG 23 DP 485346	ob79	277°40'00"	M	32.84	M
IT 1 DP 485346	PEG 24 DP 485346	ob80	226°11'00"	M	36.36	M
IT 1 DP 485346	PEG 25 DP 485346	ob81	220°43'00"	M	35.01	M
IT 1 DP 485346	PEG 26 DP 485346	ob82	176°00'00"	M	17.66	M
IT 1 DP 485346	PEG 27 DP 485346	ob83	325°05'00"	M	5.65	M
IT 1 DP 485346	PEG 28 DP 485346	ob84	233°30'00"	M	36.51	M
IT 1 DP 485346	PEG 29 DP 485346	ob85	222°04'00"	M	29.38	M
IT 1 DP 485346	PEG 33 DP 485346	ob86	67°19'00"	M	88.63	M
IT 1 DP 485346	PEG 34 DP 485346	ob87	82°33'30"	M	86.05	M
IT 1 DP 485346	PEG 35 DP 485346	ob88	100°17'00"	M	91.62	M
IT 1 DP 485346	PEG 36 DP 485346	ob89	205°56'00"	M	44.58	M
IT 1 DP 485346	PEG 37 DP 485346	ob90	201°58'00"	M	49.17	M
IT 1 DP 485346	PEG 38 DP 485346	ob91	235°08'00"	M	33.87	M
IT 1 DP 485346	PEG 39 DP 485346	ob92	268°09'00"	M	31.48	M
IT 1 DP 485346	PEG 10 DP 485346	ob93	285°25'00"	C	63.91	C
IT 1 DP 485346	PEG 11 DP 485346	ob94	287°40'00"	C	59.52	C
IT 1 DP 485346	PEG 30 DP 485346	ob95	293°55'00"	C	69.89	C
IT 1 DP 485346	PEG 31 DP 485346	ob96	202°33'00"	C	49.50	C

# Mark and Vector

**Survey Number** DP 485346  
**Meridional Circuit** Mount Eden 2000

From	To	Code	Bearing	Adpt Surv	Distance	Adpt Surv
IT 1 DP 485346	PEG 1D DP 437422	ob97	171°48'00"	C	41.21	C
IT 1 DP 485346	PEG 2A DP 437422	ob98	222°56'30"	C	70.26	C
UNMK 41 DP 485346	UNMK 43 DP 485346	ob129	136°54'00"	C	4.60	C
UNMK 42 DP 485346	UNMK 45 DP 485346	ob131	136°54'00"	C	3.96	C
UNMK 45 DP 485346	UNMK 44 DP 485346	ob134	78°40'00"	C	26.84	C
IT VI DP 198234	29 PUKETUTU	ob20	92°40'37"	M	11,408.47	C
IT 1 DP 485346	29 PUKETUTU	ob99	92°47'10"	M	11,495.85	C
IT 1 DP 485346	WT MT WILLIAM	ob100	100°19'25"	M	11,766.43	C

Mark Name	Description
IT 9 DP 437422	North of cobble driveway edge. 0.3m deep.
IT V DP 198234	In lawn, 0.8m south of paling fence. 0.4m deep.

\*\*\* End of Report \*\*\*



THE SURVEYING COMPANY  
 13B HALL STREET  
 PO BOX 466 PUKEKOHE  
 PH: 09 238 9991  
 FAX: 09 238 9307

### EASEMENT SCHEDULE

Land Registration District

**North Auckland**

Plan Number

**DP 485346**

Territorial Authority (the Council)

**Auckland Council**

Council Reference

**R/SUB/2014/2346**

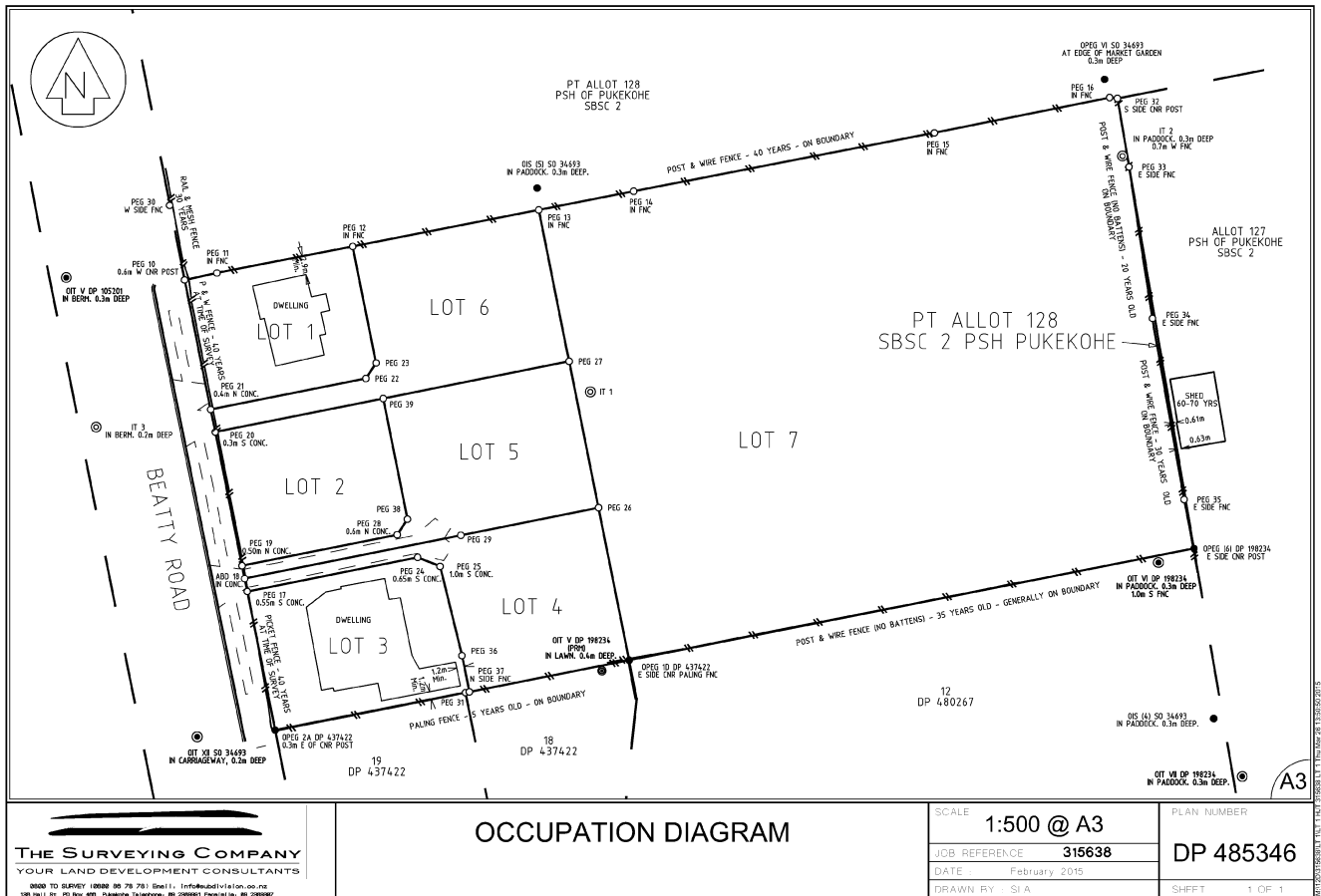
Memorandum of Easements			
Purpose	Shown	Servient Tenement	Dominant Tenement
Right of Way, Right to Convey Water, Electricity, Telecommunications and Computer Media, Right to Drain Water & Sewage	A	Lot 5	Lot 4
	B	Lot 4	Lot 5
Right to Drain Water	A	Lot 5	Lot 2
	B	Lot 4	Lot 2
Right to Drain Water	C	Lot 6	Lot 1

Proposed Easements in Gross			
Purpose	Shown	Servient Tenement	Grantee
Right to Convey Telecommunications and Computer Media	A	Lot 5	Chorus New Zealand Limited
	B	Lot 4	

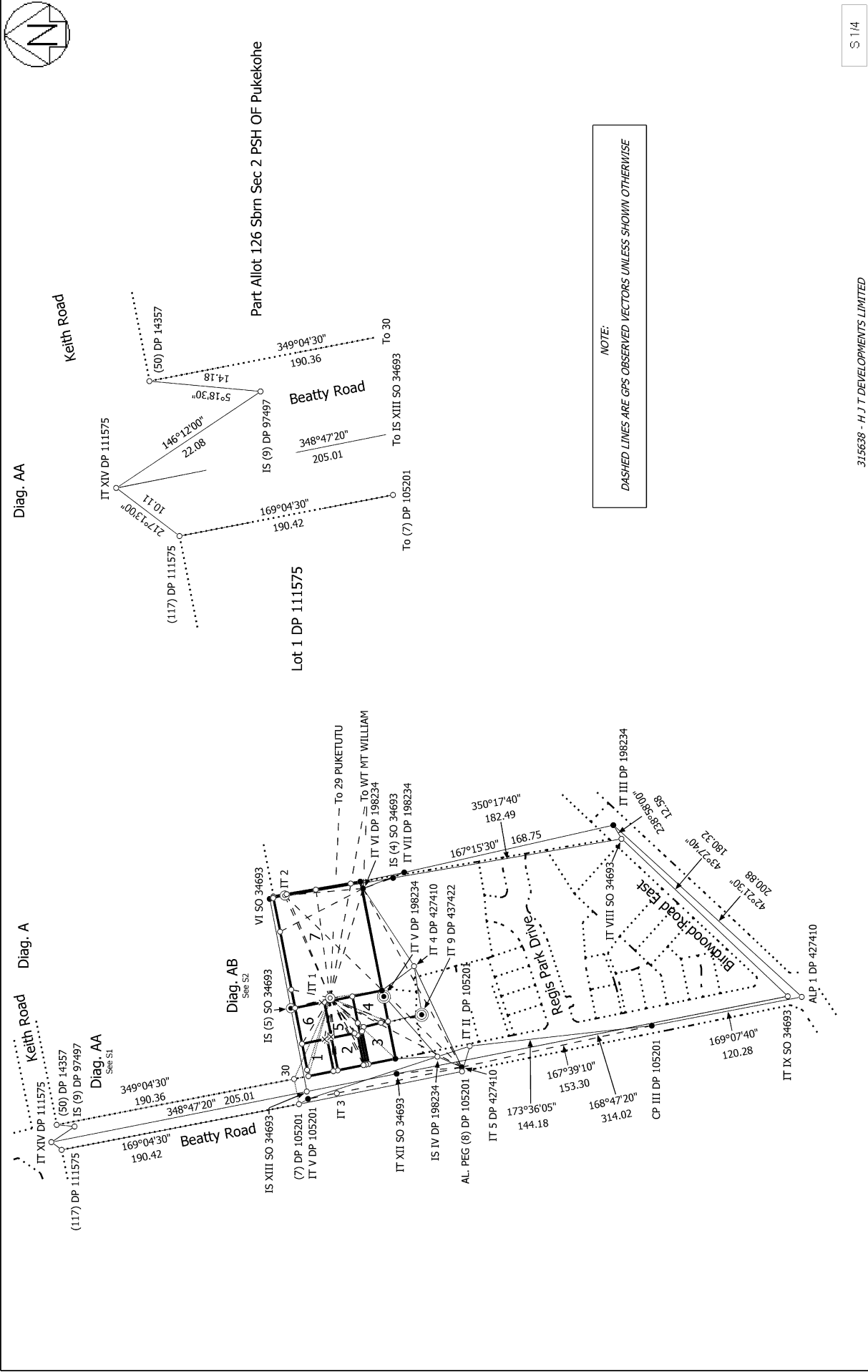
Our Ref: 315638

1/1

# Occupation Diagram







Diag. AA

Diag. A

Keith Road

Beatty Road

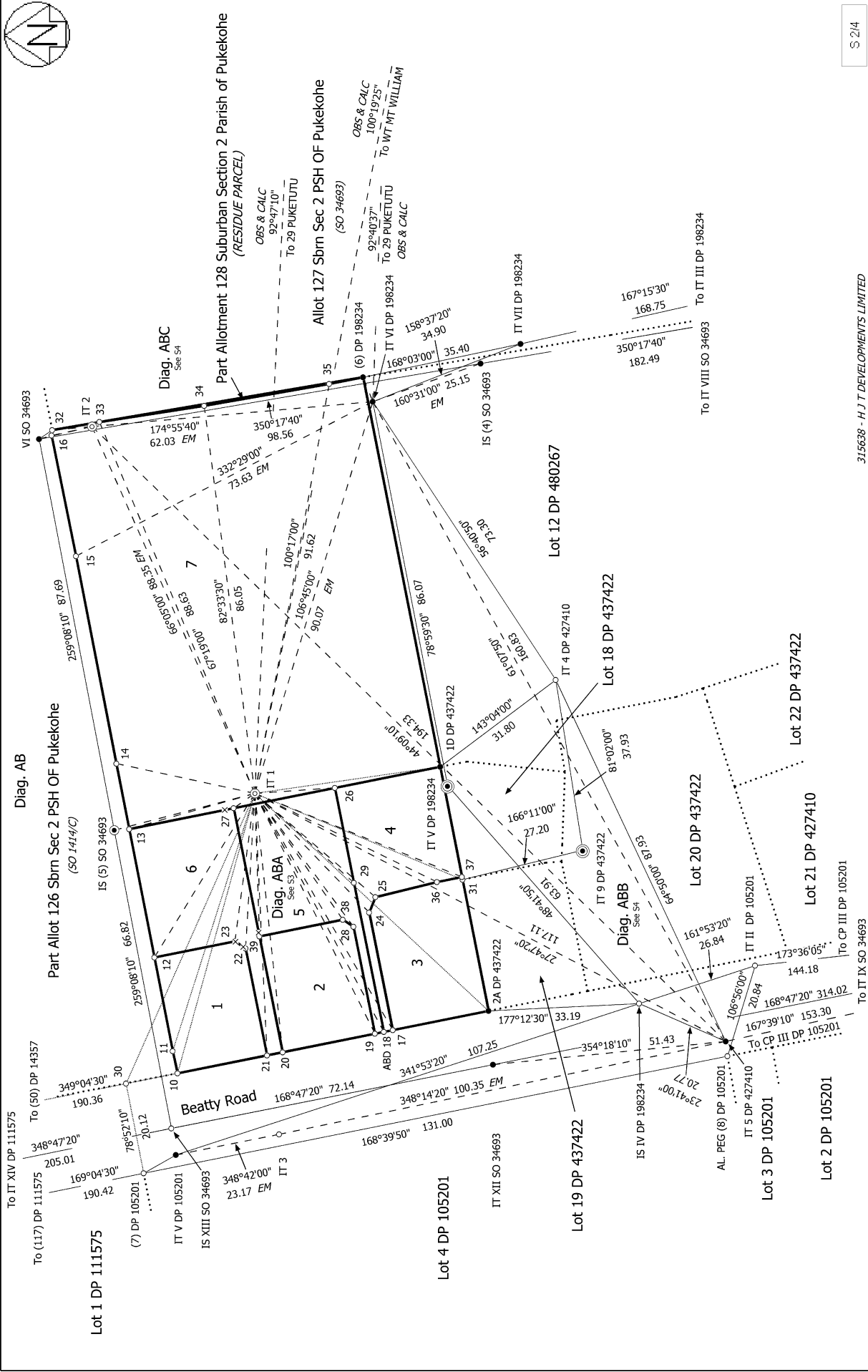
Lot 1 DP 111575

Beatty Road

Part Allot 126 Sbrm Sec 2 PSH OF Pukekohe

NOTE:  
DASHED LINES ARE GPS OBSERVED VECTORS UNLESS SHOWN OTHERWISE

LOTS 1 - 7 BEING A SUBDIVISION OF PART ALLOTMENT 128 SUBURBAN SECTION 2 PARISH OF PUKEKOHE



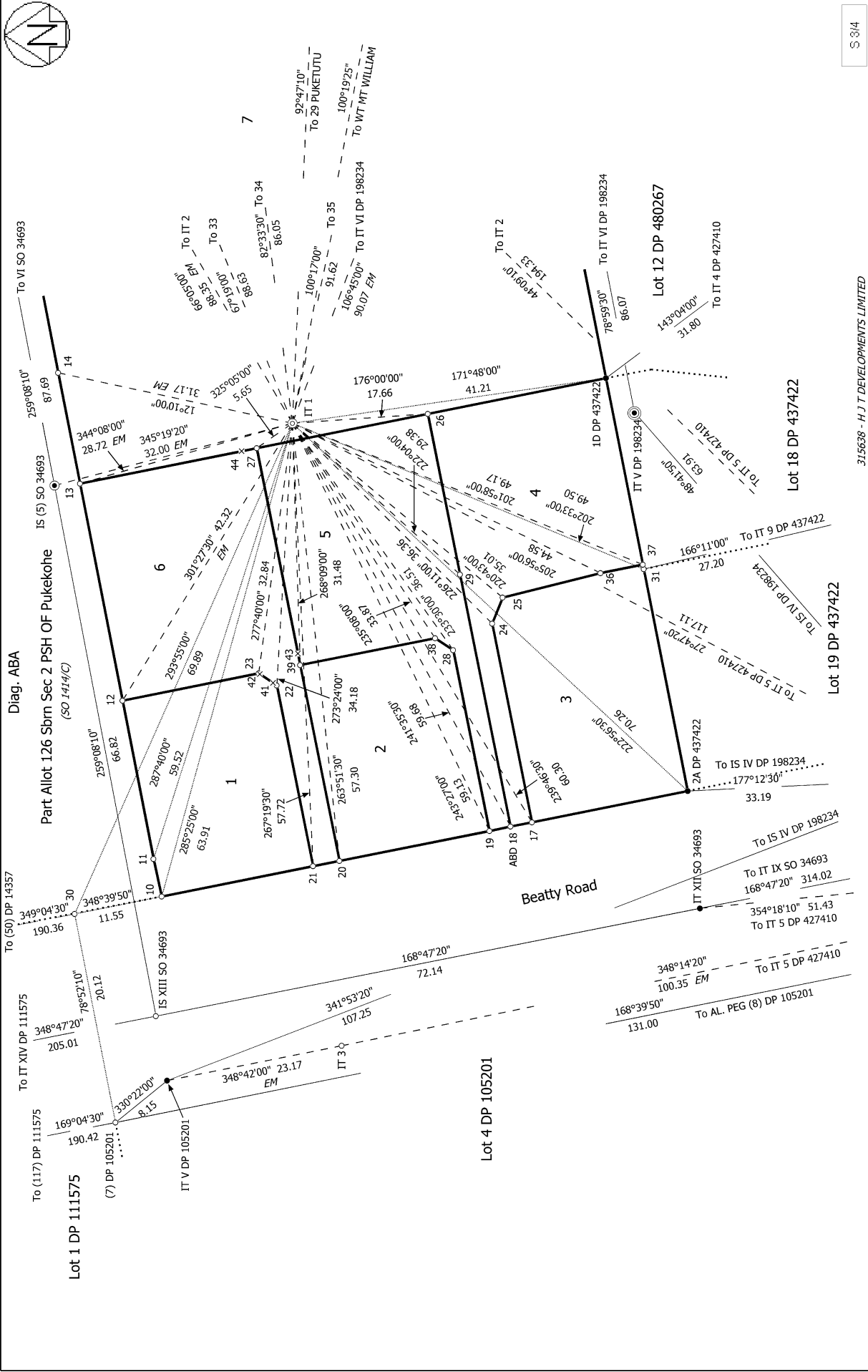
315638 - H J T DEVELOPMENTS LIMITED  
 Surveyor: Todd Adam Shuker  
 Firm: The Surveying Company Ltd (Pukekohe)  
 Survey Date: 2/03/2015

Land District: North Auckland  
 Digitally Generated Plan  
 Generated on: 01/09/2015 11:39pm Page 10 of 15

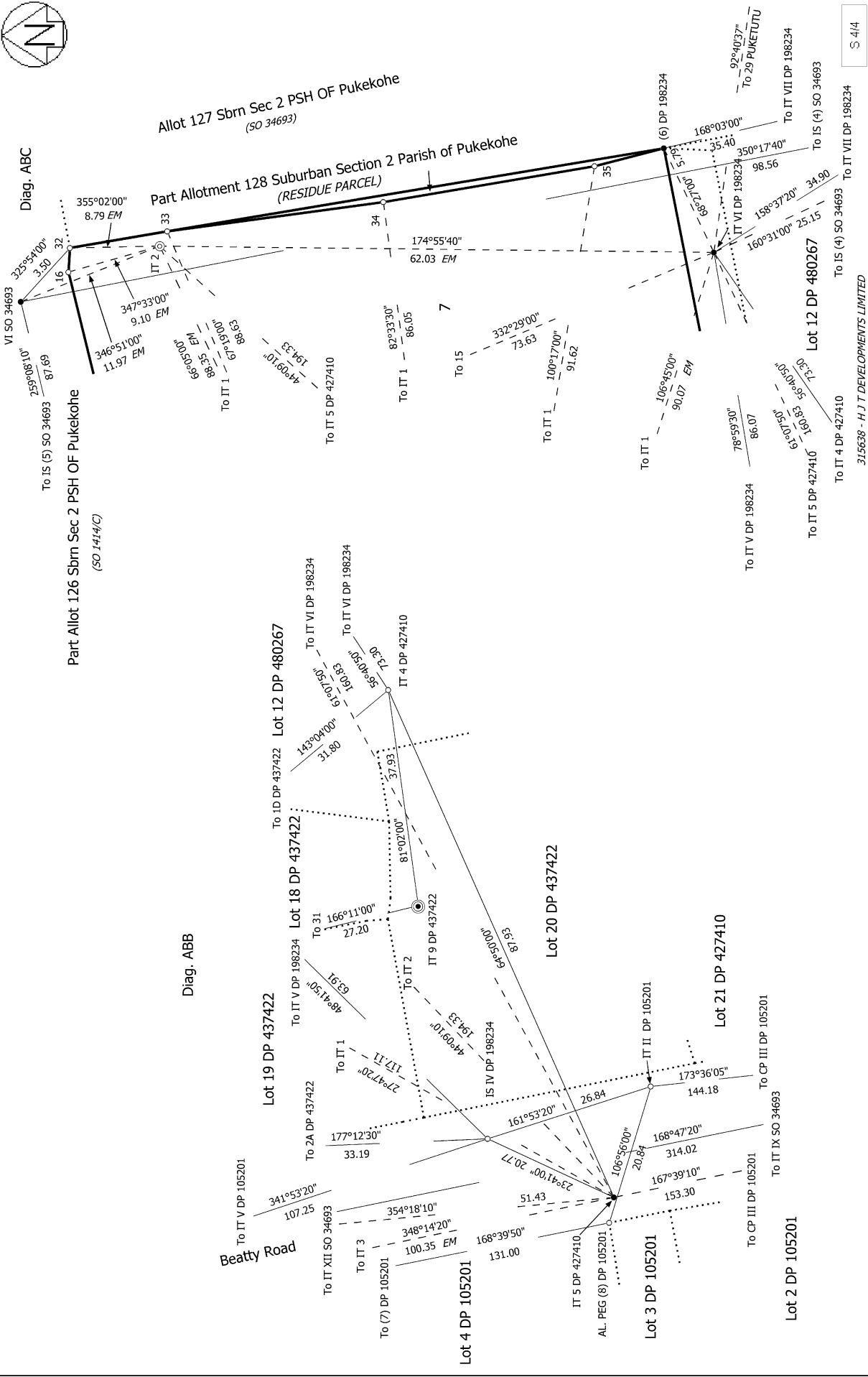
LOT 1 - 7 BEING A SUBDIVISION OF PART ALLOTMENT 128 SUBURBAN SECTION 2 PARISH OF PUKEKOHE

CSD Plan  
 DP 485346  
 Deposited on: 31/07/2015

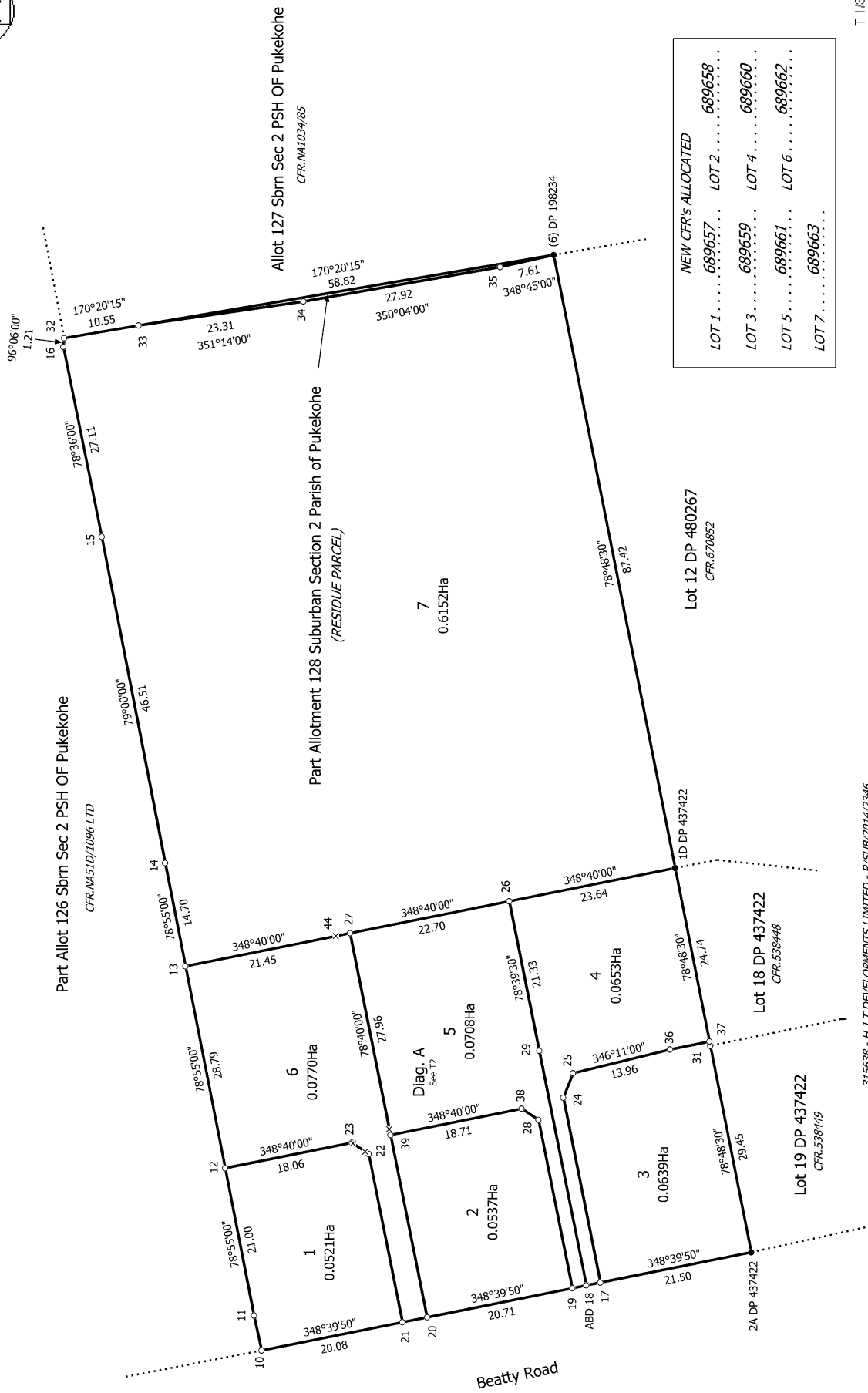
S 2/4



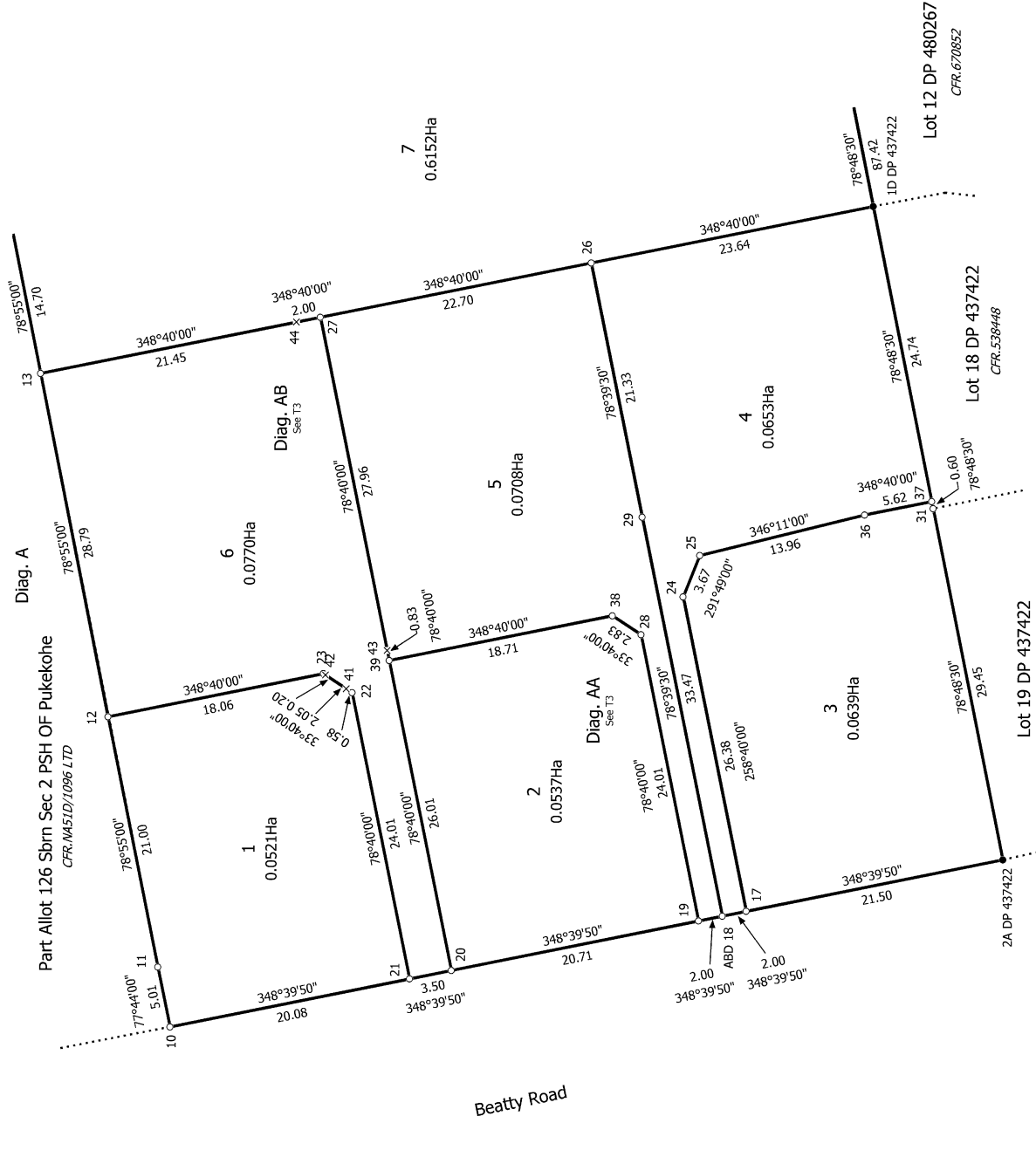
<p>Land District: North Auckland</p> <p><b>Digitally Generated Plan</b></p> <p>Generated on: 01/09/2015 11:39pm Page 11 of 15</p>	<p><b>LOTS 1 - 7 BEING A SUBDIVISION OF PART ALLOTMENT 128 SUBURBAN SECTION 2 PARISH OF PUKEKOHE</b></p>	<p>315638 - HJT DEVELOPMENTS LIMITED</p> <p>Surveyor: Todd Adam Shuker</p> <p>Firm: The Surveying Company Ltd (Pukekohe)</p> <p>Survey Date: 2/03/2015</p>	<p><b>CSD Plan</b></p> <p><b>DP 485346</b></p> <p>Deposited on: 31/07/2015</p>
---	--	--	--



<p>Land District: North Auckland</p> <p><b>Digitally Generated Plan</b></p> <p>Generated on: 01/09/2015 11:39pm Page 12 of 15</p>	<p><b>LOTS 1 - 7 BEING A SUBDIVISION OF PART ALLOTMENT 128 SUBURBAN SECTION 2 PARISH OF PUKEKOHE</b></p>	<p>Surveyor: Todd Adam Shuker</p> <p>Firm: The Surveying Company Ltd (Pukekohe)</p> <p>Survey Date: 2/03/2015</p>	<p><b>CSD Plan</b></p> <p><b>DP 485346</b></p>	<p>Deposited on: 31/07/2015</p>
---	--	---	--	---------------------------------



Land District: North Auckland	315638 - H J T DEVELOPMENTS LIMITED - R/SUB/2014/2346	T 18
<b>Digitally Generated Plan</b> Generated on: 01/09/2015 11:39pm Page 13 of 15	<b>LOTS 1 - 7 BEING A SUBDIVISION OF PART ALLOTMENT 128 SUBURBAN SECTION 2 PARISH OF PUKEKOHE</b>	<b>CSD Plan</b> <b>DP 485346</b>
Surveyor: Todd Adam Shuker Firm: The Surveying Company Ltd (Pukekol) Survey Date: 2/03/2015	Deposited on: 31/07/2015	



T 218

315638 - H J T DEVELOPMENTS LIMITED - R/SUB/2014/2346

**CSD Plan**  
**DP 485346**  
Deposited on: 31/07/2015

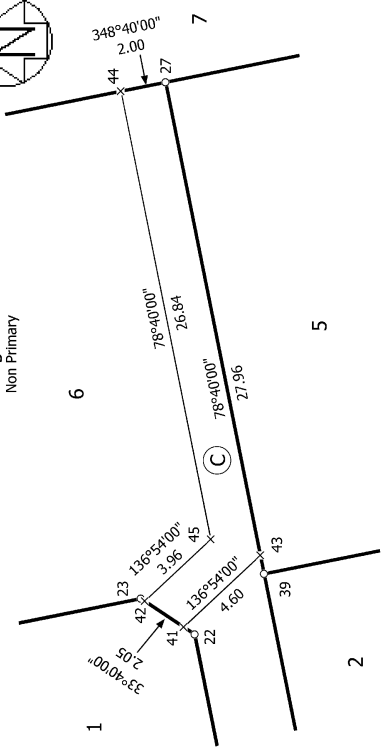
Surveyor: Todd Adam Shuker  
Firm: The Surveying Company Ltd (Pukekohe)  
Survey Date: 2/03/2015

**LOTS 1 - 7 BEING A SUBDIVISION OF PART ALLOTMENT 128 SUBURBAN SECTION 2 PARISH OF PUKEKOHE**

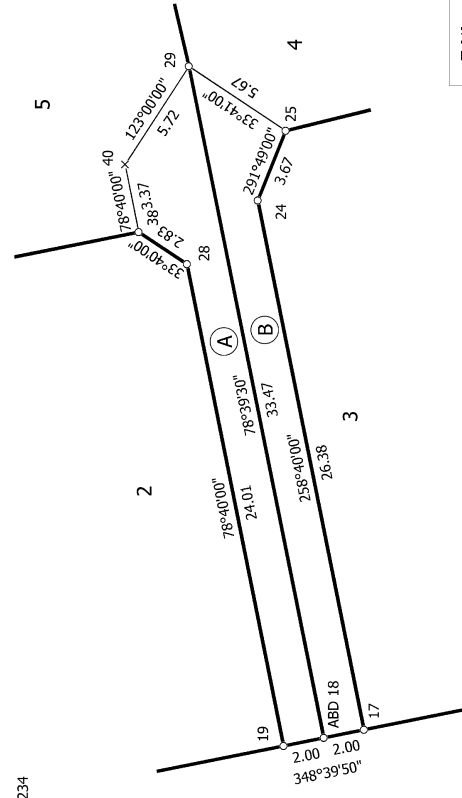
Land District: North Auckland  
**Digitally Generated Plan**  
Generated on: 01/09/2015 11:39pm Page 14 of 15



Diag. AB  
Non Primary



Diag. AA  
Non Primary

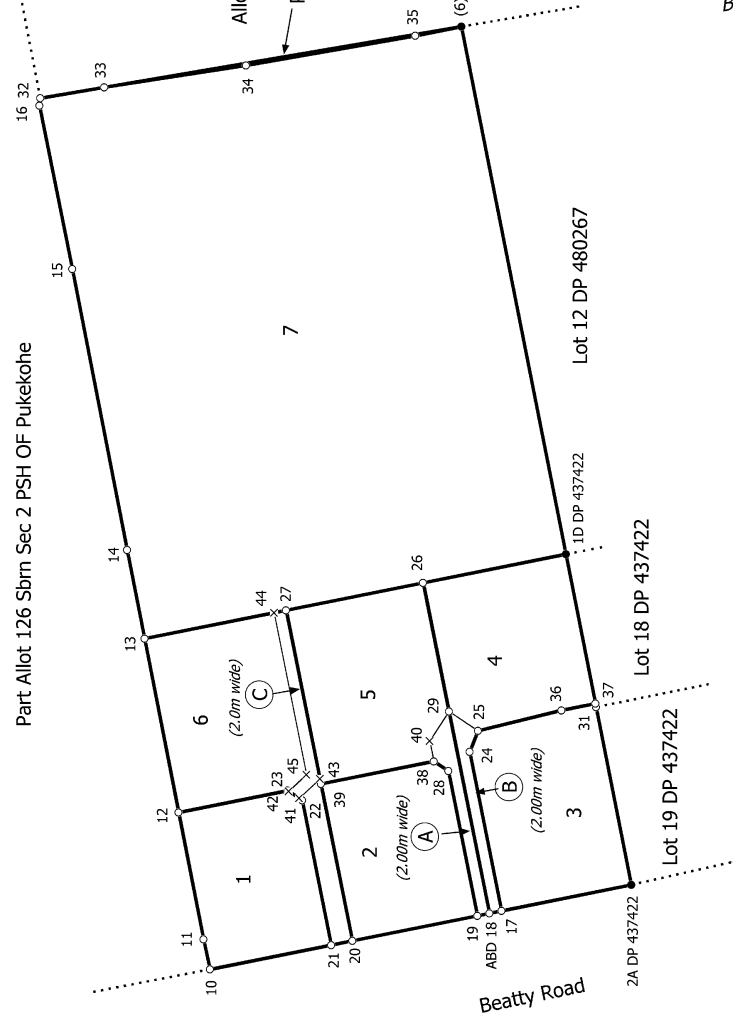


Part Allot 126 Sbrm Sec 2 PSH OF Pukekohe

Allot 127 Sbrm Sec 2 PSH OF Pukekohe

Part Allotment 128 Suburban Section 2 Parish of Pukekohe  
(RESIDUE PARCEL)

Non Primary



Beatty Road

Beatty Road

T 318

315638 - H J T DEVELOPMENTS LIMITED - R/SUB/2014/2346

Land District: North Auckland  
Digitally Generated Plan  
Generated on: 01/09/2015 11:39pm Page 15 of 15

LOTS 1 - 7 BEING A SUBDIVISION OF PART ALLOTMENT 128 SUBURBAN SECTION 2 PARISH OF PUKEKOHE

CSD Plan  
DP 485346

Surveyor: Todd Adam Shuker  
Firm: The Surveying Company Ltd (Pukekohe)  
Survey Date: 2/03/2015

Deposited on: 31/07/2015