



CSD Plan - DP 502952

Survey Number DP 502952
Surveyor Reference 1030-140075-02 Adverse Possession
Surveyor Ryan Bruce Healey
Survey Firm Harrison Grierson Consultants Ltd
Surveyor Declaration I Ryan Bruce Healey, being a licensed cadastral surveyor, certify that:
(a) this dataset provided by me and its related survey are accurate, correct and in accordance with the Cadastral Survey Act 2002 and the Rules for Cadastral Survey 2010, and
(b) the survey was undertaken by me or under my personal direction.
Declared on 19 May 2020 01:29 PM

Survey Details

Dataset Description Lots 1 - 7 being Part Brigham's Claim shown on DP 2088
Purpose Application
Status Deposited **Type** Survey
Land District North Auckland **Survey Class** Class B
Meridional Circuit Mount Eden 2000 **Vertical Datum** None

Survey Dates

Surveyed Date 31/01/2018 **Certified Date** 19/05/2020
Submitted Date 19/05/2020 13:29:07 **Survey Approval Date** 20/05/2020
Deposit Date 12/07/2017

Referenced Surveys

Survey Number	Land District	Bearing Correction
DP 52123	North Auckland	-0°00'20"
DP 62338	North Auckland	-0°00'20"
DP 64737	North Auckland	-0°00'20"
DP 65390	North Auckland	0°00'00"
SO 44466	North Auckland	-0°00'40"
DP 2088	North Auckland	-0°00'20"
DP 512699	North Auckland	0°00'00"

Territorial Authorities

Auckland Council

Comprised In

RT NA95/60

Created Parcels

Parcels	Parcel Intent	Area	RT Reference
Lot 1 Deposited Plan 502952	Fee Simple Title	0.0212 Ha	774424
Lot 2 Deposited Plan 502952	Fee Simple Title	0.0366 Ha	774425
Lot 3 Deposited Plan 502952	Fee Simple Title	0.0278 Ha	774426
Lot 4 Deposited Plan 502952	Fee Simple Title	1.1821 Ha	774427
Lot 5 Deposited Plan 502952	Fee Simple Title	0.2568 Ha	774428



CSD Plan - DP 502952

Created Parcels

Parcels	Parcel Intent	Area	RT Reference
Lot 6 Deposited Plan 502952	Fee Simple Title	0.0496 Ha	774429
Lot 7 Deposited Plan 502952	Fee Simple Title	0.7881 Ha	774430
Part DP 2088	Residue Parcel	1.8464 Ha	
Total Area		<u>4.2086 Ha</u>	

Mark and Vector

Survey Number DP 502952
Meridional Circuit Mount Eden 2000

From	To	Code	Bearing	Adpt Surv	Bearing Correction	Distance	Adpt Surv	Class
IT 2 DP 512699	IT I SO 44466	ob10	52°54'20"	M		774.29 M		
IT I SO 44466	IS 1 DP 502952	ob23	214°14'30"	M		166.79 M		
IS 1 DP 502952	IT 2 DP 512699	ob28	237°51'20"	M		618.60 M		
IT 2 DP 512699	IS 2 DP 502952	ob11	130°09'00"	M		200.75 M		
IS 2 DP 502952	IS IX DP 52123	ob39	356°09'00"	M		135.09 M		
IS IX DP 52123	IT 3 DP 512699	ob44	305°40'50"	M		246.93 M		
IT 3 DP 512699	IT 2 DP 512699	ob45	159°22'40"	M		159.59 M		
IS 2 DP 502952	IS X DP 52123	ob40	354°33'40"	M		67.92 M		
IS X DP 52123	IT 2 DP 512699	ob47	292°48'30"	M		159.49 M		
IS X DP 52123	IS IX DP 52123	ob48	357°46'00"	A DP 52123	-0°00'20"	67.23 A DP 52123		
IT 2 DP 512699	IT XVIII DP 62338	ob12	127°49'45"	M		249.92 M		
IT XVIII DP 62338	IT 3 DP 512699	ob50	320°02'35"	M		394.85 M		
IS 2 DP 502952	PEG 513 DP 512699	ob41	355°40'00"	M		11.47 M		
PEG 513 DP 512699	IT 2 DP 512699	ob52	307°43'10"	M		192.90 M		
IS 2 DP 502952	PEG 3 DP 502952	ob42	68°38'00"	M		20.97 M		
PEG 3 DP 502952	IT 2 DP 512699	ob54	305°09'10"	M		211.55 M		
IT XVIII DP 62338	PEG 3 DP 502952	ob51	322°12'40"	A DP 62338	-0°00'20"	39.81 A DP 62338		
IS X DP 52123	PEG 3 DP 502952	ob49	156°37'40"	A DP 52123	-0°00'20"	65.37 A DP 52123		
IT 2 DP 512699	IS XVIA DP 62338	ob13	172°29'20"	M		492.35 M		
IS XVIA DP 62338	IT 3 DP 512699	ob57	349°17'30"	M		648.79 M		
IT I SO 44466	IT IV DP 52123	ob24	9°39'20"	A SO 44466	-0°00'40"	6.44 A SO 44466		
IT IV DP 52123	IS V DP 52123	ob60	133°54'40"	A DP 52123	-0°00'20"	79.21 A DP 52123		
IS V DP 52123	IS VI DP 52123	ob61	233°24'30"	A DP 52123	-0°00'20"	85.56 A DP 52123		
IS VI DP 52123	IP VII DP 52123	ob62	225°59'40"	A DP 52123	-0°00'20"	121.99 A DP 52123		
IP VII DP 52123	IS 1 DP 502952	ob68	5°29'00"	M		46.68 M		
IS VI DP 52123	PEG 4 DP 502952	ob63	244°09'10"	A DP 52123	-0°00'20"	71.25 A DP 52123		
PEG 4 DP 502952	IS 1 DP 502952	ob70	249°18'30"	M		20.51 M		
IT I SO 44466	PEG (2) SO 44466	ob25	226°51'20"	M		42.31 M		
PEG (2) SO 44466	IS II SO 44466	ob73	123°44'50"	A SO 44466	-0°00'40"	12.98 A SO 44466	Class B	
IS II SO 44466	PEG 50 DP 502952	ob75	123°44'50"	A SO 44466	-0°00'40"	7.14 A SO 44466	Class B	

Mark and Vector

Survey Number DP 502952
Meridional Circuit Mount Eden 2000

From	To	Code	Bearing	Adpt Surv	Bearing Correction	Distance	Adpt Surv	Class
PEG 50 DP 502952	PEG 4 DP 502952	ob76	213°45'10"	A DP 52123	-0°00'20"	108.89 A	SO 44466	Class B
IP VII DP 52123	IS XXI DP 52123	ob69	230°52'40"	A DP 52123	-0°00'20"	95.55 A	DP 52123	
IS XXI DP 52123	IS XXII DP 52123	ob72	230°52'40"	A DP 52123	-0°00'20"	132.57 A	DP 52123	
IS XXII DP 52123	PEG 1/2A DP 52123	ob77	233°39'20"	A DP 52123	-0°00'20"	116.28 A	DP 52123	
PEG 1/2A DP 52123	IB VIII DP 52123	ob78	225°42'40"	A DP 52123	-0°00'20"	62.40 A	DP 52123	
IB VIII DP 52123	IS IX DP 52123	ob86	250°41'40"	A DP 52123	-0°00'20"	63.19 A	DP 52123	
IS 1 DP 502952	PEG (1) DP 19884	ob29	200°45'20"	M		53.05 M		
PEG (1) DP 19884	PEG 51 DP 502952	ob88	230°42'40"	A DP 2088	-0°00'20"	79.14 A	DP 52123	Class B
PEG 51 DP 502952	PEG 2/3A DP 52123	ob92	230°42'40"	A DP 2088	-0°00'20"	132.75 A	DP 52123	Class B
PEG 2/3A DP 52123	IS XXII DP 52123	ob94	168°09'00"	A DP 52123	-0°00'20"	6.76 A	DP 52123	
PEG 2/3A DP 52123	PEG 1/2A DP 52123	ob95	230°42'40"	A DP 2088	-0°00'20"	119.21 A	DP 52123	Class B
PEG 4 DP 502952	POST 5 DP 502952	ob71	213°45'10"	A DP 52123	-0°00'20"	3.94 C		Class B
POST 5 DP 502952	PEG (1) DP 19884	ob121	213°45'10"	A DP 52123	-0°00'20"	64.38 C		Class B
PEG 51 DP 502952	IS XXI DP 52123	ob93	168°14'40"	A DP 52123	-0°00'20"	7.22 A	DP 52123	
IS 2 DP 502952	PEG 500 DP 512699	ob43	358°27'50"	M		144.23 M		
PEG 500 DP 512699	IB VIII DP 52123	ob89	78°03'00"	A DP 512699		55.66 A	DP 512699	
PEG 1/2A DP 52123	UNMK 182 DP 522244	ob79	230°42'40"	A DP 2088	-0°00'20"	71.09 C		Class B
POST 6 DP 502952	PEG 52 DP 502952	ob123	230°42'40"	A DP 2088	-0°00'20"	10.22 C		Class B
PEG 52 DP 502952	PEG 500 DP 512699	ob90	278°56'40"	A DP 2088	-0°00'20"	26.98 A	DP 2088	
PEG (2) SO 44466	PEG 54 DP 502952	ob74	213°45'10"	A DP 512699		174.24 A	DP 512699	Class B
PEG 54 DP 502952	PEG 500 DP 512699	ob96	230°42'40"	A DP 2088	-0°00'20"	439.69 A	DP 2088	Class B
PEG 54 DP 502952	PEG (1) DP 19884	ob97	132°11'00"	A DP 512699		20.35 A	DP 512699	
PEG 52 DP 502952	POST 7 DP 502952	ob91	141°41'40"	A DP 2088	-0°00'20"	0.28 C		Class B
POST 7 DP 502952	UNMK 183 DP 522244	ob139	141°41'40"	A DP 2088	-0°00'20"	19.48 C		Class B

Mark and Vector

Survey Number DP 502952
Meridional Circuit Mount Eden 2000

From	To	Code	Bearing	Adpt Surv	Bearing Correction	Distance	Adpt Surv	Class
PEG (5) DP 64737	IB VIII DP 52123	ob98	18°28'00"	A DP 64737	-0°00'20"	37.72 A	DP 64737	
PEG 3 DP 502952	PEG 513 DP 512699	ob55	280°36'40"	A DP 2088	-0°00'20"	20.74 A	DP 2088	Class B
PEG 513 DP 512699	PEG 8 DP 502952	ob53	24°46'40"	A DP 2088	-0°00'20"	49.38 C		Class B
PEG 8 DP 502952	PEG 9 DP 502952	ob142	24°46'40"	A DP 2088	-0°00'20"	32.84 C		Class B
PEG 9 DP 502952	UNMK 10 DP 502952	ob101	327°11'40"	A DP 2088	-0°00'20"	24.77 C		Class B
UNMK 10 DP 502952	PEG 500 DP 512699	ob144	327°11'40"	A DP 2088	-0°00'20"	44.35 C		Class B
PEG 9 DP 502952	PEG 36 DP 502952	ob102	85°58'40"	M		30.18 M		
PEG 36 DP 502952	PEG (5) DP 64737	ob103	321°41'40"	A DP 2088	-0°00'20"	40.43 C		Class B
PEG 3 DP 502952	PEG 36 DP 502952	ob56	28°43'40"	A DP 2088	-0°00'20"	91.91 A	DP 2088	Class B
IT 2 DP 512699	IS XVII DP 62338	ob14	144°57'40"	M		379.87 M		
IS XVII DP 62338	IT 3 DP 512699	ob105	329°12'50"	M		535.91 M		
IS XVII DP 62338	IT XVIII DP 62338	ob106	352°31'50"	A DP 62338	-0°00'20"	159.08 A	DP 62338	
IT 3 DP 512699	IT XVI DP 62338	ob46	164°19'25"	M		628.84 M		
IT XVI DP 62338	IS XVIB DP 62338	ob109	237°02'40"	A DP 62338	-0°00'20"	7.52 A	DP 62338	
IS XVIB DP 62338	IS XVIA DP 62338	ob111	237°02'40"	A DP 62338	-0°00'20"	51.32 A	DP 62338	
IT 2 DP 512699	PEG LXXXIX DP 2088	ob15	150°34'15"	M		332.16 M		
PEG LXXXIX DP 2088	IT 3 DP 512699	ob114	333°25'40"	M		490.48 M		
PEG LXXXIX DP 2088	PEG 513 DP 512699	ob115	356°25'40"	A DP 2088	-0°00'20"	171.62 A	DP 512699	Class B
POST 5 DP 502952	POST 11 DP 502952	ob122	215°30'00"	C		14.71 C		Class B
POST 11 DP 502952	POST 12 DP 502952	ob124	214°31'30"	C		33.75 C		Class B
POST 12 DP 502952	POST 13 DP 502952	ob125	216°18'00"	C		11.33 C		Class B
POST 13 DP 502952	POST 14 DP 502952	ob126	218°08'00"	C		2.12 C		Class B
POST 14 DP 502952	POST 15 DP 502952	ob127	235°11'00"	C		3.45 C		Class B
POST 15 DP 502952	PEG 16 DP 502952	ob128	230°04'20"	C		77.96 C		Class B

Mark and Vector

Survey Number DP 502952
Meridional Circuit Mount Eden 2000

From	To	Code	Bearing	Adpt Surv	Bearing Correction	Distance	Adpt Surv	Class
PEG 16 DP 502952	POST 17 DP 502952	ob129	230°04'00"	C		8.28 C		Class B
POST 17 DP 502952	POST 18 DP 502952	ob131	230°39'00"	C		16.55 C		Class B
POST 18 DP 502952	POST 19 DP 502952	ob132	234°59'00"	C		28.81 C		Class B
POST 19 DP 502952	POST 20 DP 502952	ob133	230°02'20"	C		61.38 C		Class B
POST 20 DP 502952	PEG 21 DP 502952	ob134	229°31'00"	C		18.05 C		Class B
PEG 21 DP 502952	POST 22 DP 502952	ob135	229°07'00"	C		5.20 C		Class B
POST 22 DP 502952	POST 23 DP 502952	ob137	230°31'00"	C		15.57 C		Class B
POST 23 DP 502952	POST 24 DP 502952	ob138	230°00'00"	C		32.02 C		Class B
POST 24 DP 502952	POST 25 DP 502952	ob157	230°00'40"	C		94.85 C		Class B
POST 25 DP 502952	POST 26 DP 502952	ob158	229°39'00"	C		27.60 C		Class B
POST 26 DP 502952	POST 27 DP 502952	ob159	230°18'00"	C		21.24 C		Class B
POST 27 DP 502952	POST 6 DP 502952	ob160	228°48'00"	C		5.71 C		Class B
POST 7 DP 502952	POST 28 DP 502952	ob140	205°28'00"	C		0.44 C		Class B
POST 28 DP 502952	UNMK 10 DP 502952	ob141	184°35'00"	C		32.56 C		Class B
PEG 8 DP 502952	PEG 3 DP 502952	ob143	180°20'30"	C		48.63 C		Class B
IS XVII DP 62338	PEG 53 DP 502952	ob107	296°06'40"	A DP 62338	-0°00'20"	38.20 A DP 62338		
IT XVI DP 62338	PEG (21) DP 62338	ob110	316°58'40"	A DP 62338	-0°00'20"	30.82 A DP 62338		
IS XVIA DP 62338	PEG XC DP 2088	ob58	285°27'40"	A DP 62338	-0°00'20"	27.56 A DP 62338		
IS XVIA DP 62338	PEG 29 DP 502952	ob59	310°29'40"	A DP 62338		6.18 A DP 62338		
PEG XC DP 2088	PEG 29 DP 502952	ob116	98°39'40"	A DP 2088	-0°00'20"	22.11 A DP 2088		
PEG 29 DP 502952	PEG (21) DP 62338	ob118	33°11'40"	A DP 2088	-0°00'20"	60.35 A DP 62338		Class B
PEG (21) DP 62338	PEG (22) DP 62338	ob113	33°11'40"	A DP 62338	-0°00'20"	26.86 A DP 62338		Class B
PEG (22) DP 62338	PEG 53 DP 502952	ob120	33°11'40"	A DP 62338	-0°00'20"	139.63 A DP 62338		Class B
IS XVII DP 62338	IT XVI DP 62338	ob108	215°45'00"	A DP 62338	-0°00'20"	178.72 A DP 62338		

Mark and Vector

Survey Number DP 502952
Meridional Circuit Mount Eden 2000

From	To	Code	Bearing	Adpt Surv	Bearing Correction	Distance	Adpt Surv	Class
PEG 53 DP 502952	PEG 3 DP 502952	ob112	356°25'40"	A DP 2088	-0°00'20"	172.72	A DP 62338	Class B
PEG XC DP 2088	PEG 31 DP 502952	ob117	33°11'40"	A DP 2088	-0°00'20"	10.54	C	Class B
PEG 31 DP 502952	PEG LXXXIX DP 2088	ob146	33°11'40"	A DP 2088	-0°00'20"	218.41	C	Class B
PEG 31 DP 502952	POST 32 DP 502952	ob147	125°07'00"	C		19.71	C	Class B
POST 32 DP 502952	POST 34 DP 502952	ob148	33°25'20"	C		60.05	C	Class B
POST 34 DP 502952	POST 35 DP 502952	ob149	33°12'00"	C		166.12	C	Class B
POST 35 DP 502952	PEG 53 DP 502952	ob150	116°07'00"	C		0.08	C	Class B
PEG 29 DP 502952	UNMK (36) DP 65390	ob119	164°08'00"	A DP 2088	-0°00'20"	94.17	A DP 65390	Class B
UNMK (36) DP 65390	PEG (37) DP 65390	ob145	164°08'00"	A DP 2088	-0°00'20"	210.26	A DP 65390	Class B
PEG (37) DP 65390	PEG (38) DP 65390	ob151	153°24'00"	A DP 2088	-0°00'20"	246.39	A DP 2088	Class B
PEG (38) DP 65390	PEG (39) DP 65390	ob152	195°46'00"	A DP 2088	-0°00'20"	366.75	A DP 2088	Class B
PEG (39) DP 65390	PEG (40) SO 41767	ob153	311°12'00"	A DP 2088	-0°00'20"	22.27	A DP 2088	Class B
PEG (40) SO 41767	PEG (41) DP 65390	ob154	15°46'00"	A DP 2088	-0°00'20"	349.39	A DP 2088	Class B
PEG (41) DP 65390	PEG (42) DP 65390	ob155	333°24'00"	A DP 2088	-0°00'20"	240.48	A DP 2088	Class B
PEG (42) DP 65390	PEG XC DP 2088	ob156	344°08'00"	A DP 2088	-0°00'20"	315.51	A DP 2088	Class B
IT 2 DP 512699	PEG 31 DP 502952	ob16	174°43'34"	M		473.97	M	
IT 2 DP 512699	PEG 29 DP 502952	ob17	172°58'32"	M		487.77	M	
PEG 21 DP 502952	PEG 2/3A DP 52123	ob136	130°19'30"	C		2.62	C	Class B
PEG 16 DP 502952	PEG 51 DP 502952	ob130	130°19'30"	C		1.67	C	Class B
IT 2 DP 512699	PEG 8 DP 502952	ob18	112°53'50"	M		188.08	M	
IT 2 DP 512699	PEG 9 DP 502952	ob19	103°03'20"	M		191.98	M	
IT 2 DP 512699	PEG 21 DP 502952	ob20	66°33'00"	M		369.46	M	
IT 2 DP 512699	PEG 16 DP 502952	ob21	62°28'55"	M		498.90	M	
IS 1 DP 502952	PEG 16 DP 502952	ob30	219°30'20"	M		127.82	M	

Mark and Vector

Survey Number DP 502952
 Meridional Circuit Mount Eden 2000

From	To	Code	Bearing	Adpt Surv	Bearing Correction	Distance	Adpt Surv	Class
PEG 9 DP 502952	PEG (5) DP 64737	ob99	8°20'20" M			34.20 M		
PEG 9 DP 502952	IB VIII DP 52123	ob100	13°42'00" M			71.66 M		
IT 2 DP 512699	IB VIII DP 52123	ob22	82°40'15" M			205.67 M		
IB VIII DP 52123	IS XI DP 52123	ob87	140°21'50" M			121.73 M		
IS XI DP 52123	IT 2 DP 512699	ob161	283°28'40" M			289.62 M		
IS 1 DP 502952	1454	ob38	272°31'55" M					
IT 2 DP 512699	PEG (21) DP 62338	ob0	167°55'30" M			443.40 M		
UNMK 182 DP 522244	POST 6 DP 502952	ob162	230°42'40" A	DP 2088	-0°00'20"	12.31 C		Class B
UNMK 183 DP 522244	PEG (5) DP 64737	ob163	141°41'40" A	DP 2088	-0°00'20"	5.79 C		Class B
IS 1 DP 502952	POST 5 DP 502952	ob26	76°52'00" M			17.45 M		
IS 1 DP 502952	POST 11 DP 502952	ob27	133°29'00" M			11.64 M		
IP VII DP 52123	POST 12 DP 502952	ob64	329°43'00" M			12.33 M		
IP VII DP 52123	POST 13 DP 502952	ob65	276°42'00" M			13.02 M		
IP VII DP 52123	POST 14 DP 502952	ob66	269°24'00" M			14.24 M		
IP VII DP 52123	POST 15 DP 502952	ob67	262°55'00" M			17.20 M		
IT 2 DP 512699	POST 17 DP 502952	ob1	62°41'25" M			490.82 M		
IT 2 DP 512699	POST 18 DP 502952	ob2	63°06'24" M			474.64 M		
IT 2 DP 512699	POST 19 DP 502952	ob3	63°37'45" M			446.14 M		
IT 2 DP 512699	POST 20 DP 502952	ob4	65°46'00" M			386.75 M		
IT 2 DP 512699	POST 22 DP 502952	ob5	66°47'40" M			364.50 M		
IT 2 DP 512699	POST 23 DP 502952	ob6	67°30'35" M			349.58 M		
IT 2 DP 512699	POST 24 DP 502952	ob7	69°14'20" M			319.19 M		
IB VIII DP 52123	POST 25 DP 502952	ob80	40°00'30" M			33.89 M		
IB VIII DP 52123	POST 26 DP 502952	ob81	5°19'00" M			8.12 M		
IB VIII DP 52123	POST 27 DP 502952	ob84	250°38'00" M			16.52 M		

Mark and Vector

Survey Number DP 502952
Meridional Circuit Mount Eden 2000

From	To	Code	Bearing	Adpt Surv	Bearing Correction	Distance	Adpt Surv	Class
IB VIII DP 52123	POST 6 DP 502952	ob85	245°05'00"	M		21.93 M		
IS XVII DP 62338	POST 35 DP 502952	ob104	296°06'30"	M		38.28 M		
IT 2 DP 512699	POST 34 DP 502952	ob8	167°54'50"	M		443.00 M		
IT 2 DP 512699	POST 32 DP 502952	ob9	172°57'35"	M		486.97 M		
IB VIII DP 52123	POST 7 DP 502952	ob82	240°01'30"	M		31.89 M		
IB VIII DP 52123	POST 28 DP 502952	ob83	239°35'00"	M		32.25 M		
IS 1 DP 502952	IS II SO 44466	ob31	35°56'30"	M		125.66 M		
IS 1 DP 502952	PEG 50 DP 502952	ob32	39°11'10"	M		126.14 M		
IS 1 DP 502952	PEG 54 DP 502952	ob33	223°17'30"	M		49.38 M		
IS 1 DP 502952	PEG 51 DP 502952	ob34	218°45'30"	M		127.89 M		
IS 1 DP 502952	PEG 2/3A DP 52123	ob35	224°50'55"	M		259.23 M		
IS 1 DP 502952	PEG 52 DP 502952	ob36	227°29'20"	M		471.49 M		
IS 1 DP 502952	PEG 53 DP 502952	ob37	208°36'30"	M		710.02 M		

Mark Name	Description
IP VII DP 52123	Down 0.2m
IS 1 DP 502952	Down 0.25m
IS 2 DP 502952	Down 0.25m
IS II SO 44466	Down 0.1m
IS IX DP 52123	Down 0.1m
IS X DP 52123	Down 0.1m
IS XI DP 52123	Down 0.1m
IS XVIA DP 62338	Down 0.25 (Bent)
IS XVII DP 62338	Down 0.2m (Bent)
IT 2 DP 512699	Down 0.25m
IT 3 DP 512699	Down 0.25m
IT I SO 44466	Down 0.3m
IT XVI DP 62338	Down 0.25m
IT XVIII DP 62338	Down 0.2m



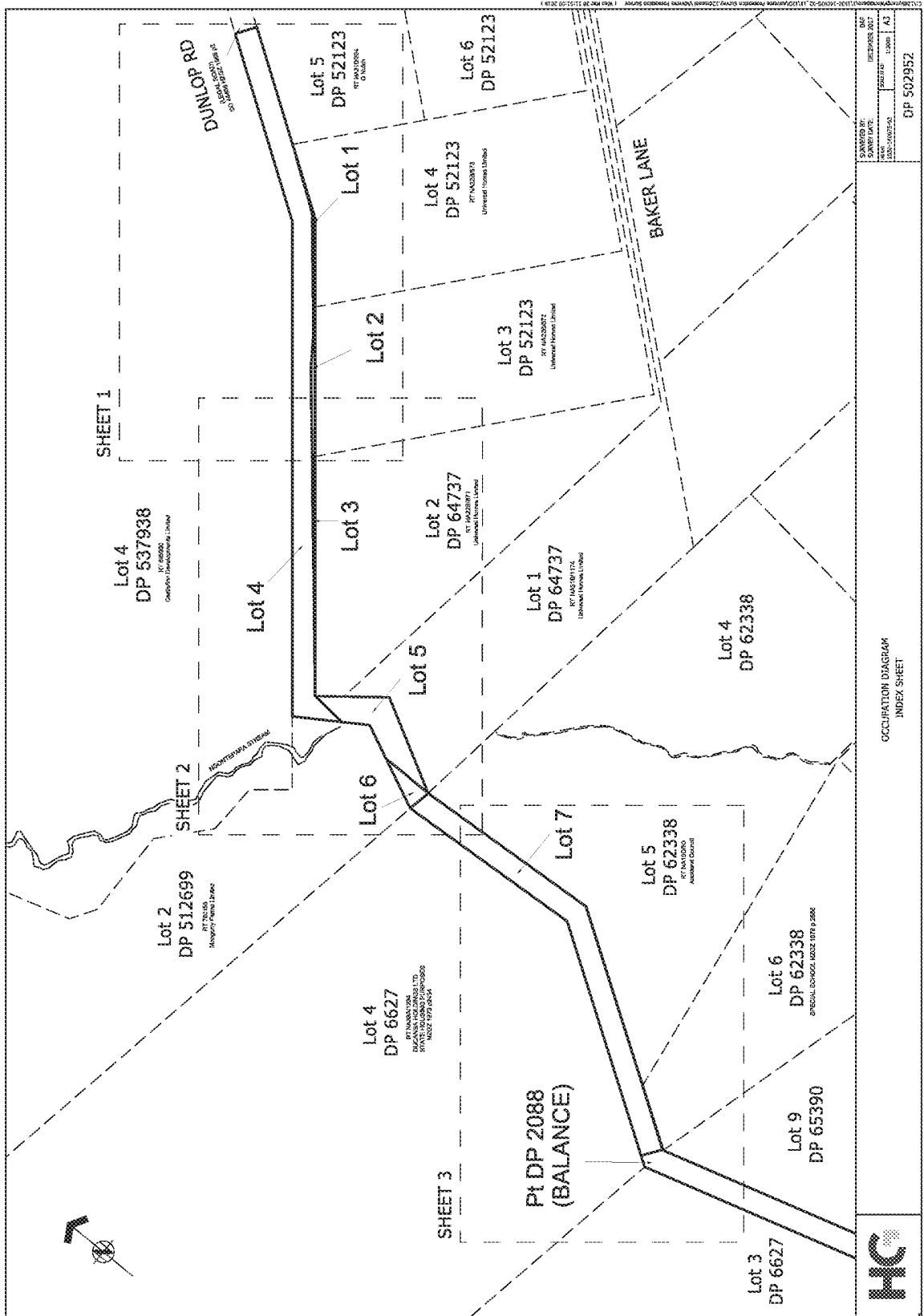
Mark and Vector

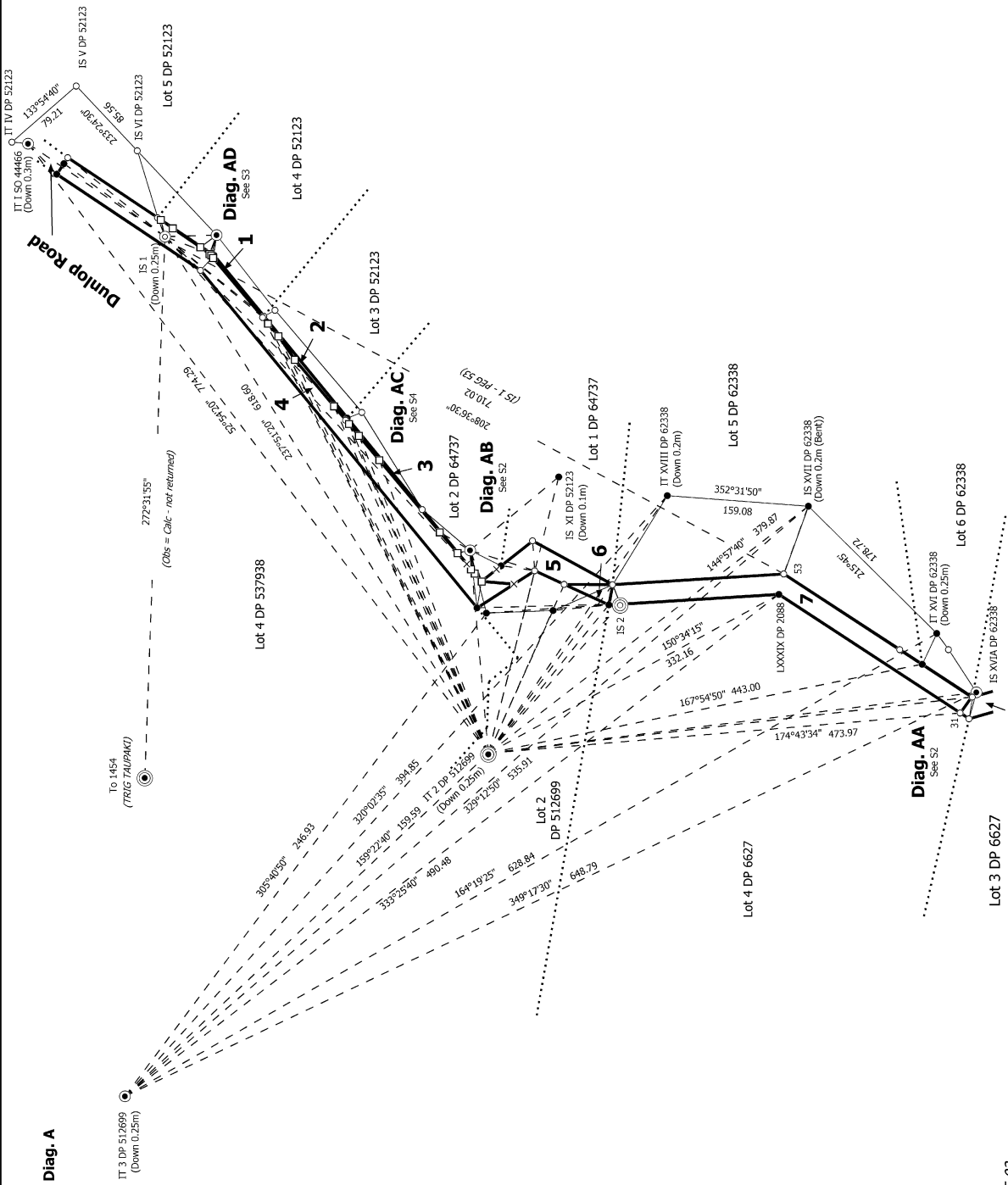
Survey Number DP 502952
Meridional Circuit Mount Eden 2000

Mark Name	Description
PEG (2) SO 44466	Down 0.4m

***** End of Report *****

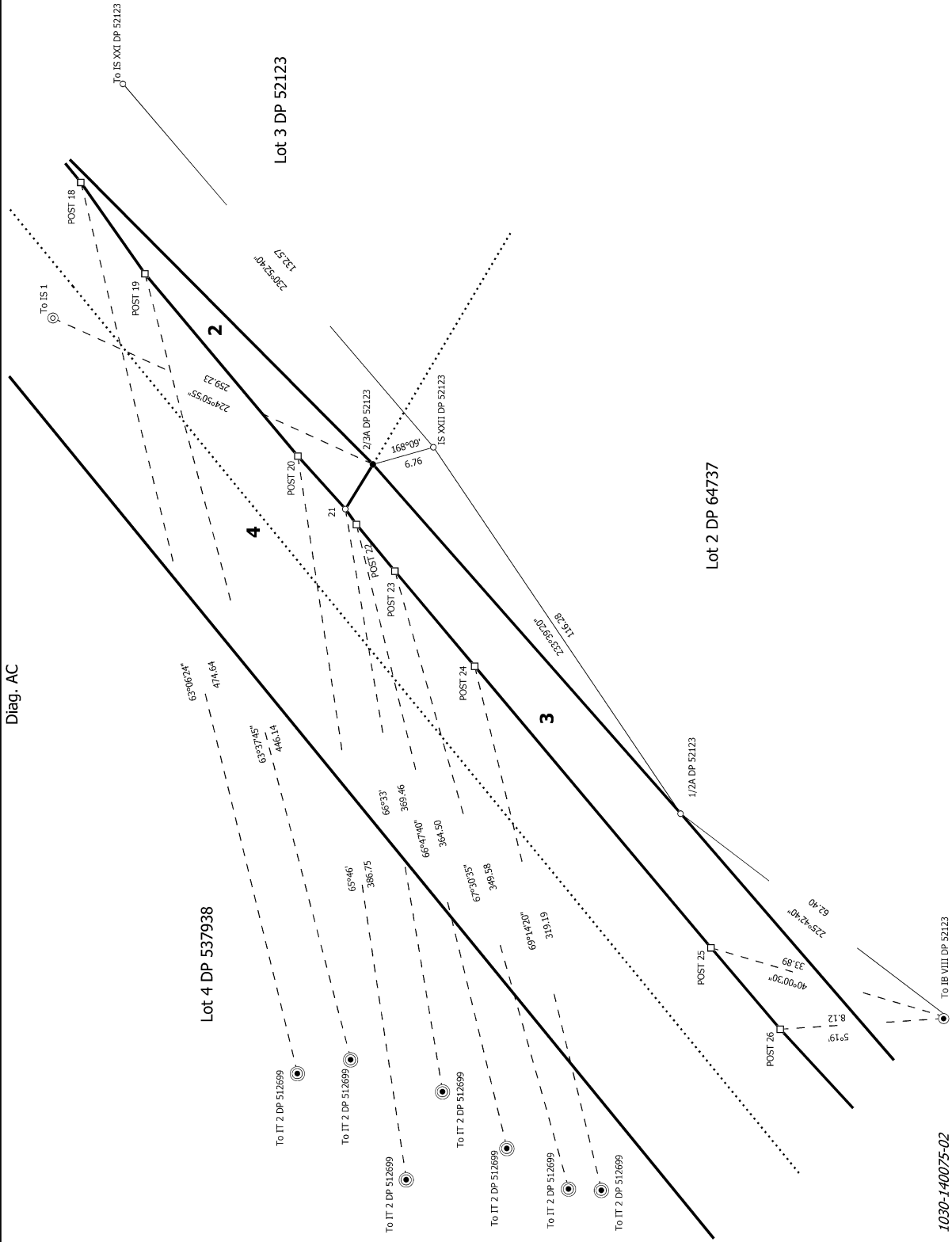
Occupation Diagram







Diag. AC

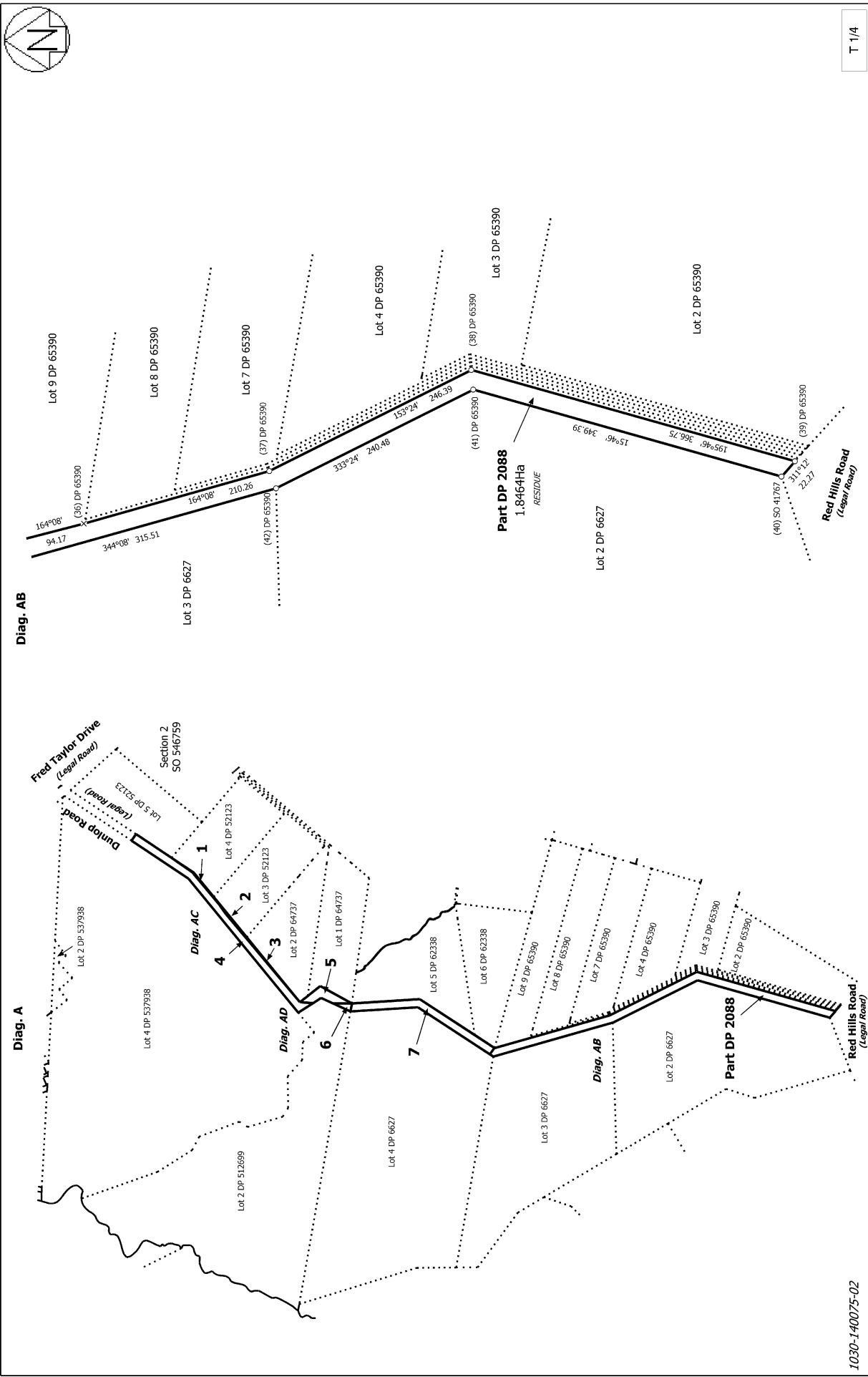


CSD Plan
 DP 502952
 Deposited on: 12/07/2017

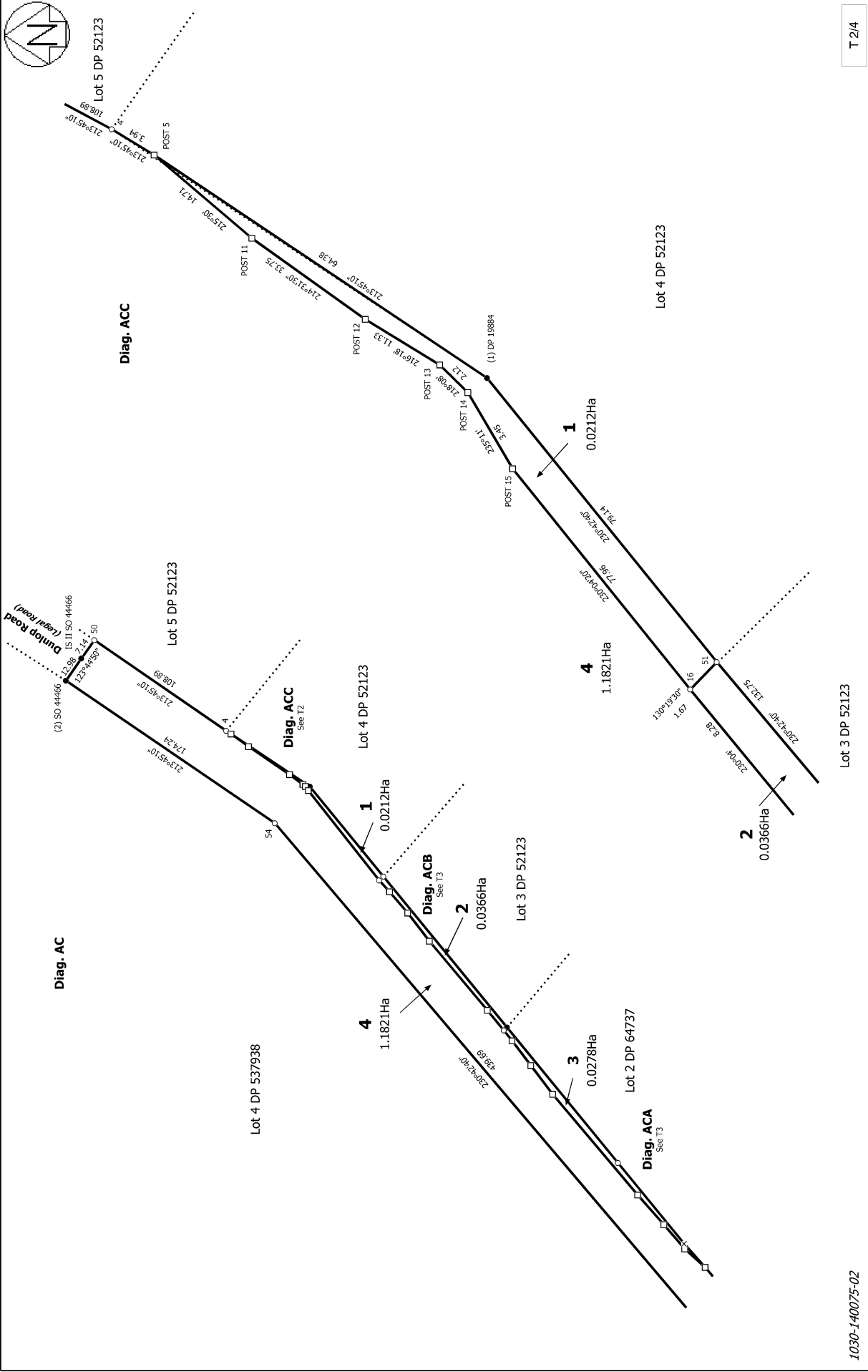
Surveyor: Ryan Bruce Healey
 Firm: Harrison Grierson Consultants Ltd
 Survey Date: 31/01/2018

Lots 1 - 7 being Part Brigham's Claim shown on DP 2088

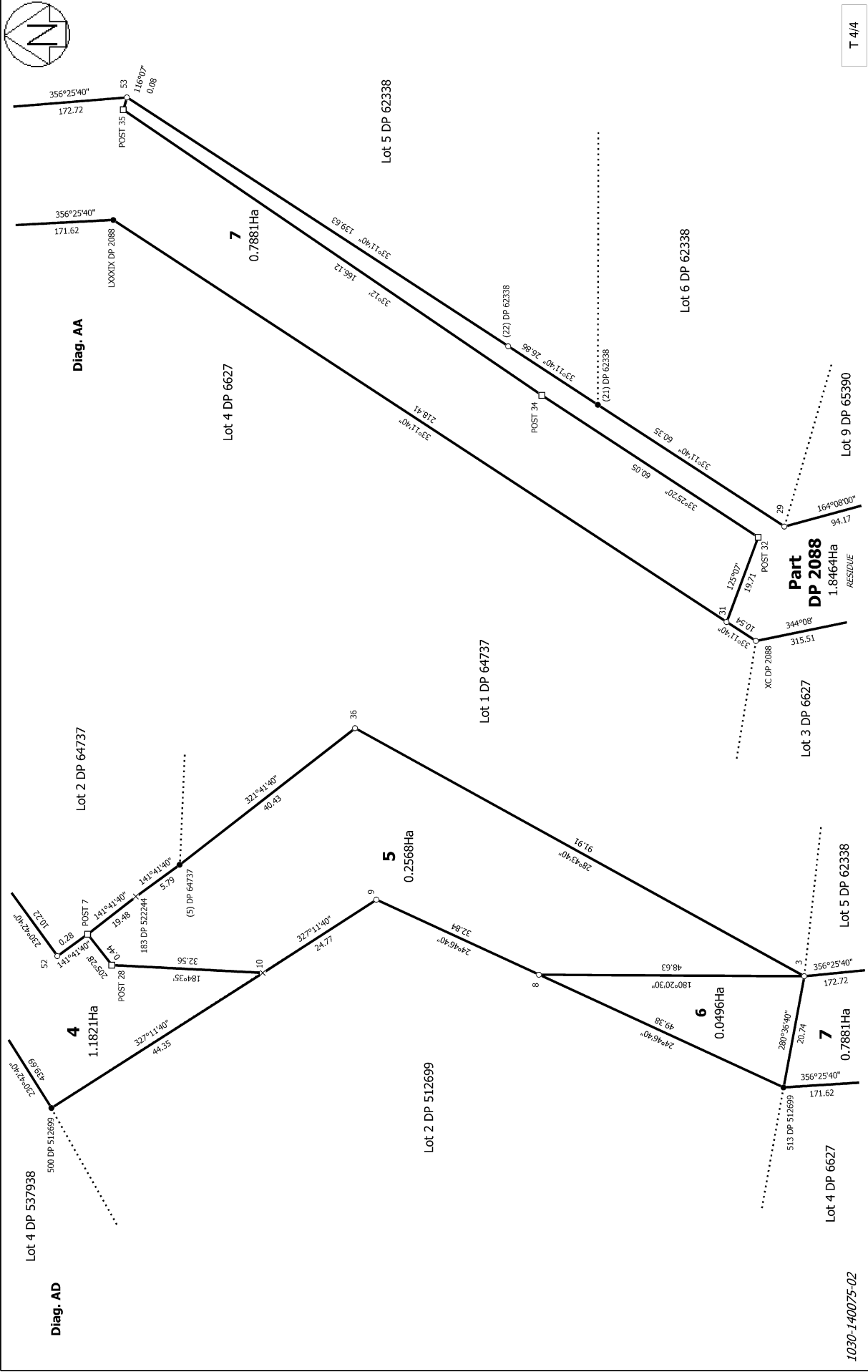
Land District: North Auckland
 Digitally Generated Plan
 Generated on: 19/08/2020 3:46pm Page 19 of 23



1030-140075-02	Land District: North Auckland	Digitally Generated Plan Generated on: 19/08/2020 3:46pm Page 20 of 23	Lots 1 - 7 being Part Brigham's Claim shown on DP 2088	Surveyor: Ryan Bruce Healey Firm: Harrison Grierson Consultants Ltd Survey Date: 31/01/2018	CSD Plan DP 502952 Deposited on: 12/07/2017
----------------	-------------------------------	---	--	---	---



1030-140075-02	Land District: North Auckland	T 2/4
Digitally Generated Plan Generated on: 19/06/2020 3:46pm Page 21 of 23	Lots 1 - 7 being Part Brigham's Claim shown on DP 2088	Surveyor: Ryan Bruce Healey Firm: Harrison Grierson Consultants Ltd Survey Date: 31/01/2018
CSD Plan DP 502952	Deposited on: 12/07/2017	



T 4/4

<p>Land District: North Auckland</p>	<p>Surveyor: Ryan Bruce Healey Firm: Harrison Grierson Consultants Ltd Survey Date: 31/01/2018</p>	<p>CSD Plan DP 502952 Deposited on: 12/07/2017</p>
<p>Lots 1 - 7 being Part Brigham's Claim shown on DP 2088</p>		
<p>1030-140075-02</p>	<p>Digitally Generated Plan Generated on: 19/08/2020 3:46pm Page 23 of 23</p>	<p>Part DP 2088 1.8464Ha RESIDUE</p>