



Title Plan - DPS 66160/E

Survey Number DPS 66160/E
Surveyor Reference 865 HCC
Surveyor Edward Doig Letford
Survey Firm Align Surveyors
Surveyor Declaration I Edward Doig Letford, being a licensed cadastral surveyor, certify that:
(a) this dataset provided by me and its related survey are accurate, correct and in accordance with the Cadastral Survey Act 2002 and the Rules for Cadastral Survey 2010, and
(b) the survey was undertaken by me or under my personal direction.
Declared on 10 Aug 2012 02:52 PM

Survey Details

Dataset Description Unit Plan in Substitution under Section 30 Unit Title Act 2010 on Section 2 SO 450284.
Status Deposited
Land District South Auckland
Submitted Date 10/08/2012
Survey Class Class A
Survey Approval Date 16/08/2012
Deposit Date 01/10/2012

Territorial Authorities

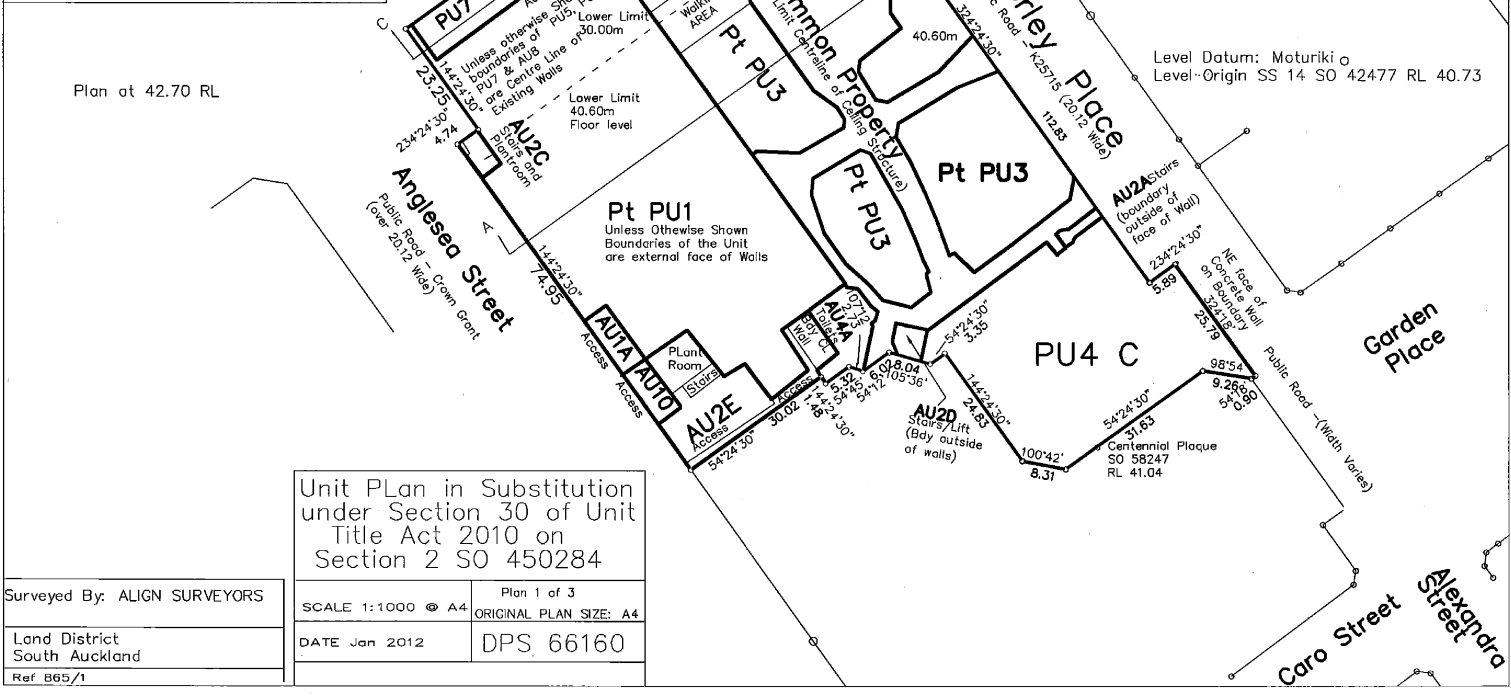
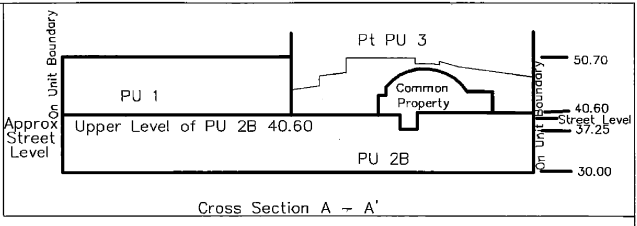
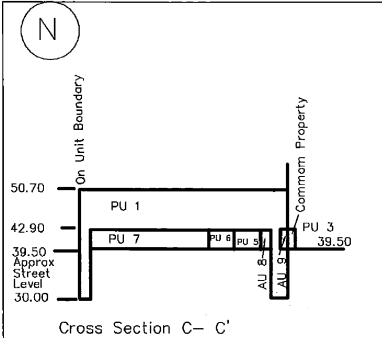
Hamilton City

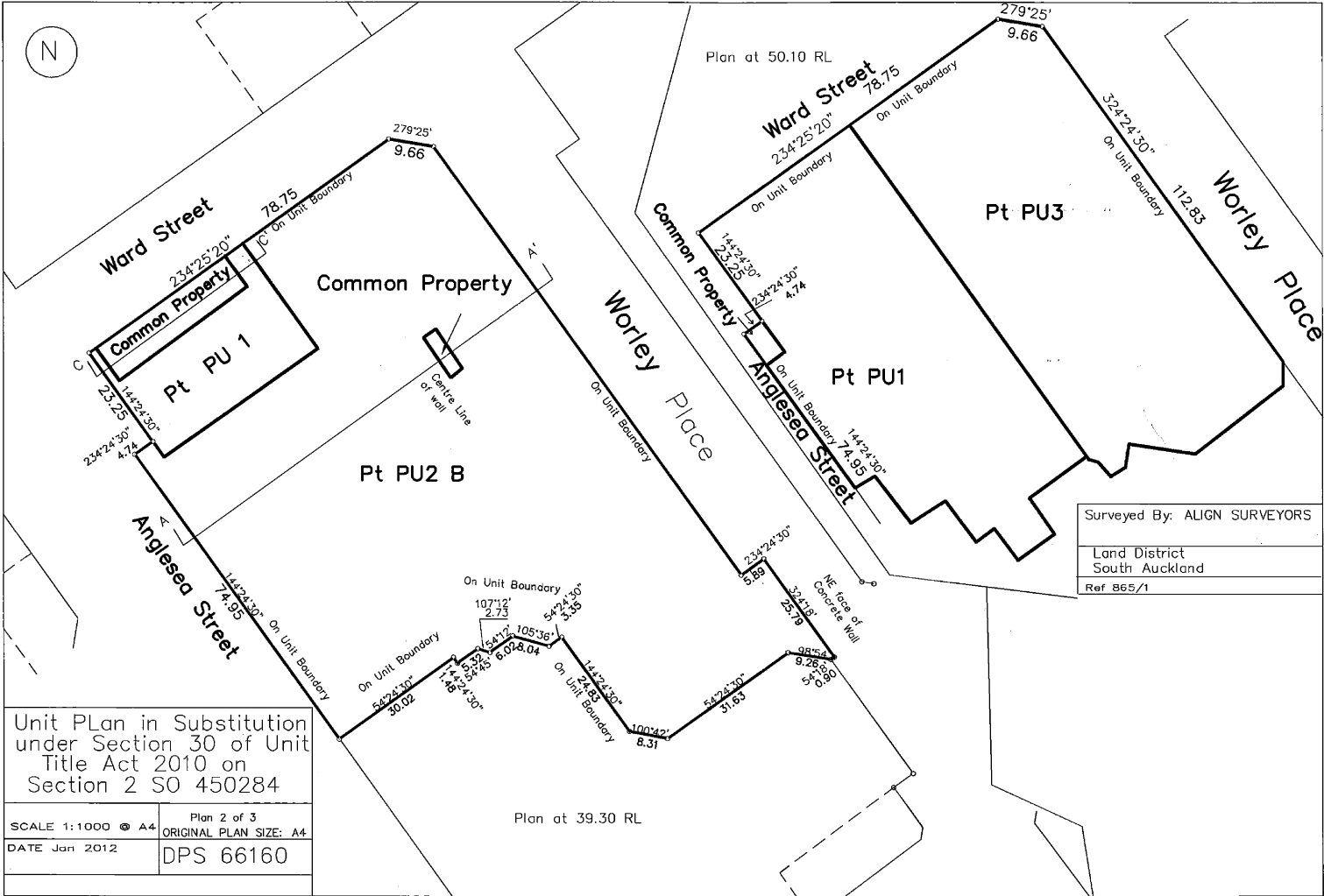
Comprised In

CT SA53B/283
CT SA53B/284
CT SA53B/289

Created Parcels

Parcels	Parcel Intent	Area	CT Reference
Principal Unit 2B Deposited Plan South Auckland 66160	Principal Unit		553252
Principal Unit 4C Deposited Plan South Auckland 66160	Principal Unit		553253
Total Area		0.0000 Ha	



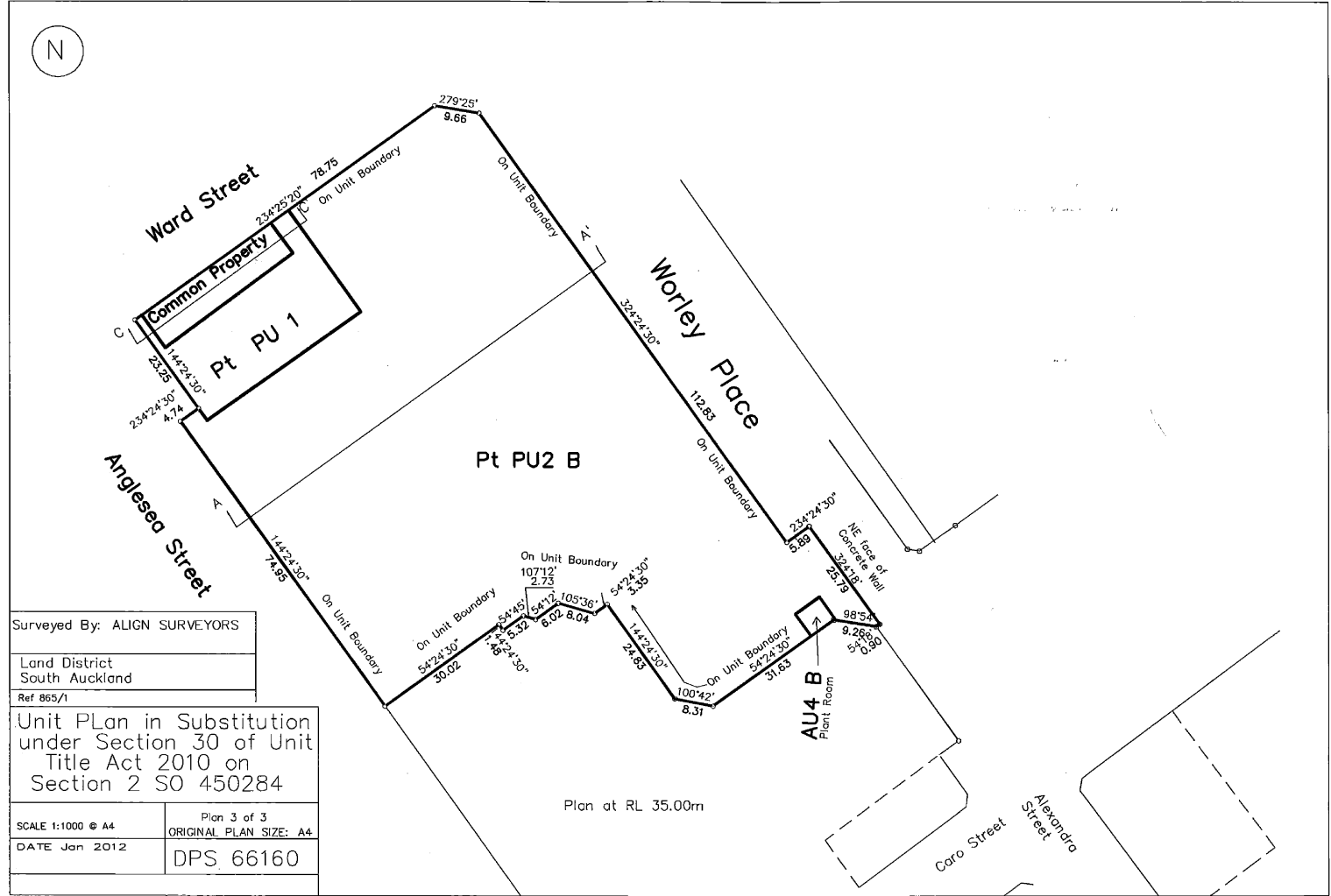


Surveyed By: ALIGN SURVEYORS
 Land District
 South Auckland
 Ref 865/1

Unit Plan in Substitution
 under Section 30 of Unit
 Title Act 2010 on
 Section 2 SO 450284

SCALE 1:1000 © A4	Plan 2 of 3 ORIGINAL PLAN SIZE: A4
DATE Jan 2012	DPS 66160

Plan at 39.30 RL



Surveyed By: ALIGN SURVEYORS
 Land District South Auckland
 Ref 865/1

Unit Plan in Substitution under Section 30 of Unit Title Act 2010 on Section 2 SO 450284

Plan 3 of 3
 SCALE 1:1000 @ A4 ORIGINAL PLAN SIZE: A4
 DATE Jan 2012
 DPS 66160

Plan at RL 35.00m

Land Registration District

South Auckland

Plan Number

DP 66160

Territorial Authority (the Council)

Hamilton City Council

SCHEDULE

Appellation	Height Limits	
	Lower	Upper
PU 1	See Plan	50.70
PU 2 B	30.00	40.60
PU 3	See Plan	No Limits
PU 4 C	40.60	50.00
PU 5	39.50	42.90
PU 6	39.50	42.90
PU 7	39.50	42.90
AU1A	40.00	44.00
AU2A	40.60	45.00
AU2C	39.50	46.50
AU2D	40.60	45.20
AU2E	40.60	50.00
AU4A	40.60	47.00
AU4B	34.20	37.10
AU8	39.50	42.90
AU9	39.50	42.90
AU10	40.00	44.00