



Crown Pastoral Land Tenure Review

Lease name : DUNSTAN DOWNS

Lease number : PO 019

Conservation Resources Report - Part 2

As part of the process of Tenure Review, advice on significant inherent values within the pastoral lease is provided by Department of Conservation officials in the form of a Conservation Resources Report. This report is the result of outdoor survey and inspection. It is a key piece of information for the development of a preliminary consultation document.

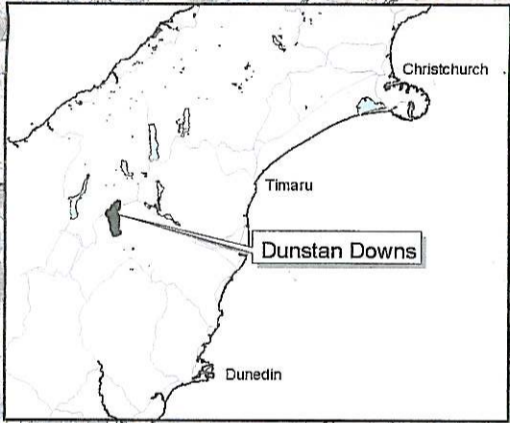
Note: Plans which form part of the Conservation Resources Report are published separately.


These documents are all released under the Official information Act 1982.

December

05

Dunstan Downs Topo/Cadastral

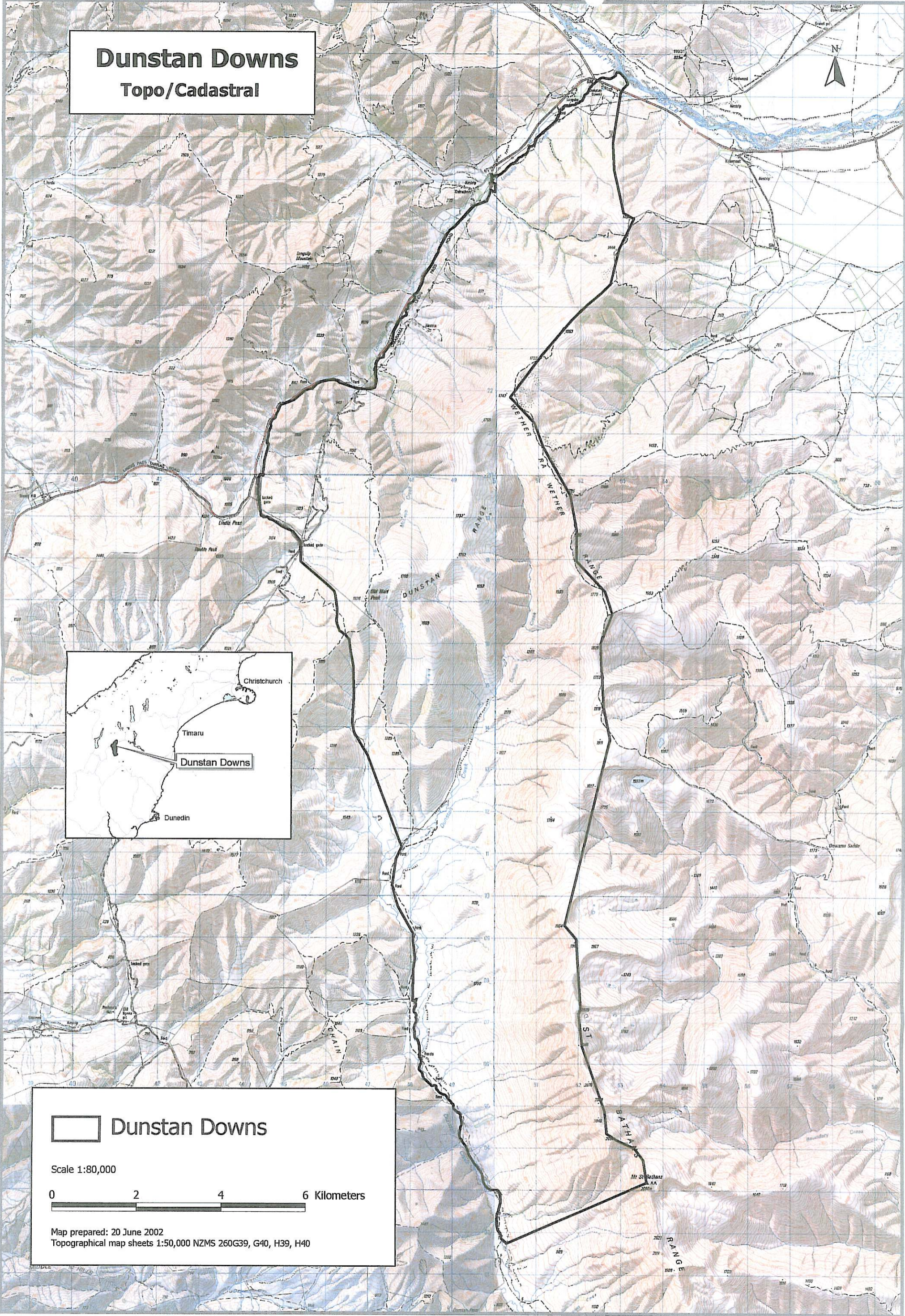


 **Dunstan Downs**

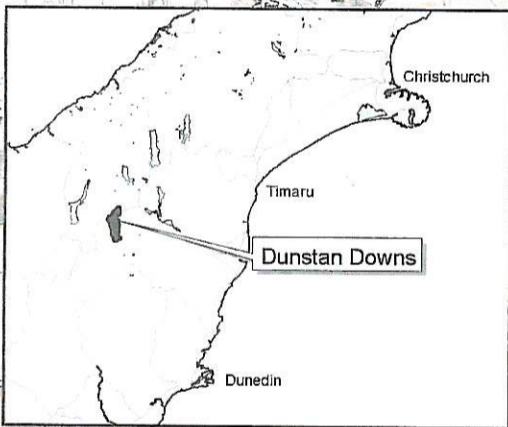
Scale 1:80,000

0 2 4 6 Kilometers

Map prepared: 20 June 2002
Topographical map sheets 1:50,000 NZMS 260G39, G40, H39, H40

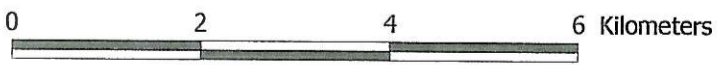


Dunstan Downs Values



-  Dunstan Downs
-  Ecological values
-  Landscape values

Scale 1:80,000



Map prepared: 2 September 2002
Topographical map sheets 1:50,000 NZMS 260G39, G40, H39, H40

