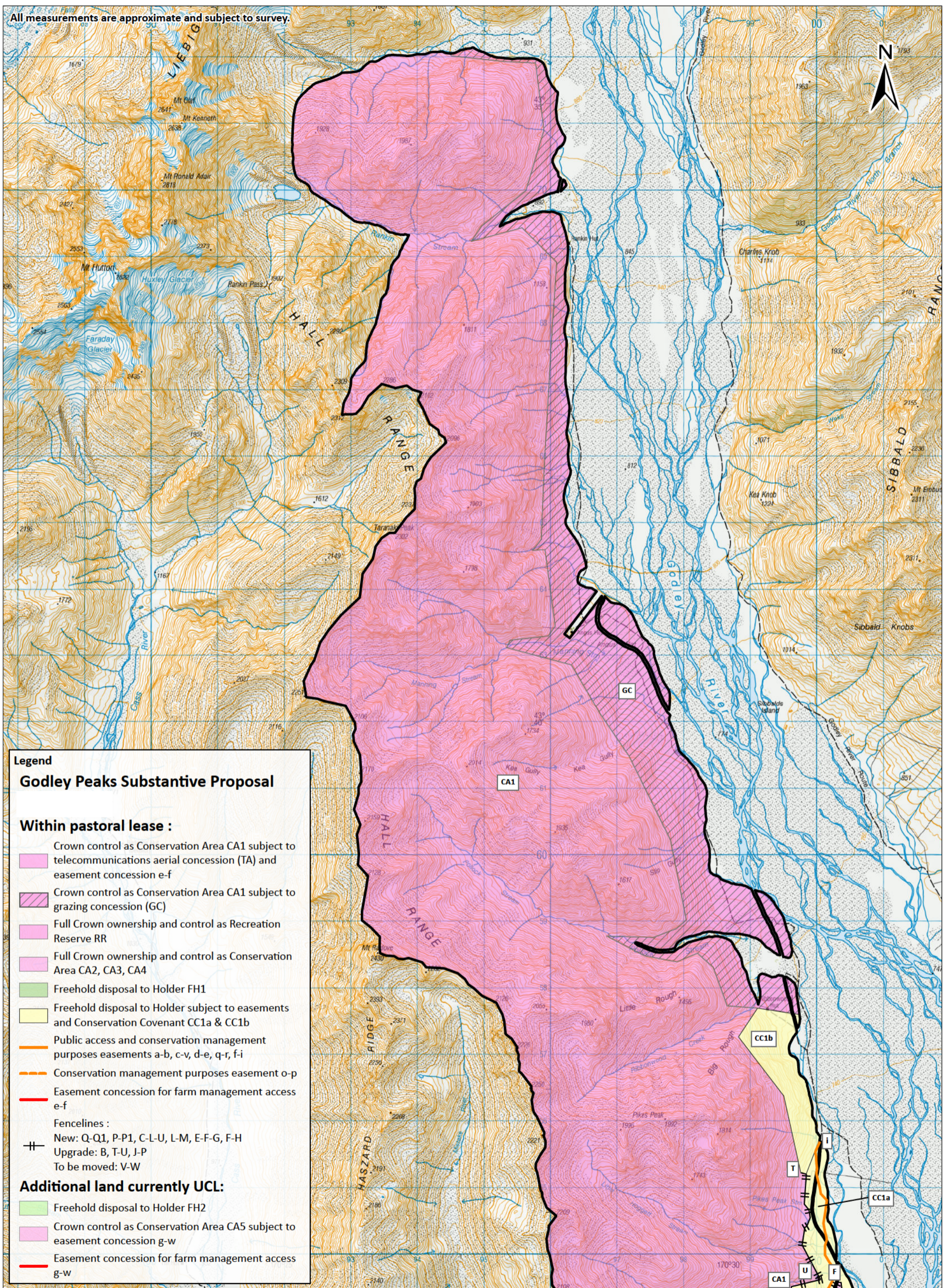


Tenure Review of Godley Peaks Pastoral Lease – Substantive Proposal Designations Plan



April 2021

All measurements are approximate and subject to survey.



Legend

Godley Peaks Substantive Proposal

Within pastoral lease :

- Crown control as Conservation Area CA1 subject to telecommunications aerial concession (TA) and easement concession e-f
- Crown control as Conservation Area CA1 subject to grazing concession (GC)
- Full Crown ownership and control as Recreation Reserve RR
- Full Crown ownership and control as Conservation Area CA2, CA3, CA4
- Freehold disposal to Holder FH1
- Freehold disposal to Holder subject to easements and Conservation Covenant CC1a & CC1b
- Public access and conservation management purposes easements a-b, c-v, d-e, q-r, f-i
- Conservation management purposes easement o-p
- Easement concession for farm management access e-f

Fencelines :

- New: Q-Q1, P-P1, C-L-U, L-M, E-F-G, F-H
- Upgrade: B, T-U, J-P
- To be moved: V-W

Additional land currently UCL:

- Freehold disposal to Holder FH2
- Crown control as Conservation Area CA5 subject to easement concession g-w
- Easement concession for farm management access g-w

All measurements are approximate and subject to survey.

Legend

Godley Peaks Substantive Proposal (Draft)

Within pastoral lease :

- Crown control as Conservation Area CA1 subject to telecommunications aerial concession (TA) and easement concession e-f
 - Crown control as Conservation Area CA1 subject to grazing concession (GC)
 - Full Crown ownership and control as Recreation Reserve RR
 - Full Crown ownership and control as Conservation Area CA2, CA3, CA4
 - Freehold disposal to Holder FH1
 - Freehold disposal to Holder subject to easements and Conservation Covenant CC1a & CC1b
 - Public access and conservation management purposes easements a-b, c-v, d-e, q-r, f-i
 - Conservation management purposes easement o-p
 - Easement concession for farm management access e-f
- Fencelines :
- New: Q-Q1, P-P1, C-L-U, L-M, E-F-G, F-H
 - Upgrade: B, T-U, J-P
 - To be moved: V-W

Additional land currently UCL:

- Freehold disposal to Holder FH2
- Crown control as Conservation Area CA5 subject to easement concession g-w
- Easement concession for farm management access g-w

