

Former *Annual New Zealand Notice to Mariners, No. 1*, published 1 July 2020 is cancelled. Additions and amendments to the former notice are indicated by sidelines.

Authority: Toitū Te Whenua Land Information New Zealand

General Information

1. In accordance with agreements between New Zealand, Australia (AUS) and the British Admiralty (BA) for reducing duplication in charting activities, New Zealand has a defined Charting Area (NZ AREA) the extent of which is shown at the end of this Notice.
2. *New Zealand Notices to Mariners* (NTMs), are published by Toitū Te Whenua Land Information New Zealand (Toitū Te Whenua LINZ), the New Zealand Hydrographic Authority. There are two main types of NTMs: Annual Notices and fortnightly Notices;
 - (a) Annual NTMs (ANTMs) are numbered 1–19 and are published in July as part of the *New Zealand Nautical Almanac* (NZ 204). They provide important safety critical information for mariners and are updated by fortnightly NTMs.
 - (b) Fortnightly NTMs are numbered sequentially following on from the highest numbered ANTM annually and are the authority for correcting New Zealand nautical charts and publications. For more details on the content of this service see the NTM section on the Toitū Te Whenua LINZ website www.linz.govt.nz/sea/maritime-safety/notices-mariners.
3. Fortnightly NTMs can be obtained electronically from Toitū Te Whenua LINZ;
 - (a) Via www.linz.govt.nz/sea/maritime-safety/notices-mariners where current and previous notices can be viewed and downloaded in PDF format; or
 - (b) By subscribing to the NTMs email distribution service via www.linz.govt.nz/sea/maritime-safety/notices-mariners/subscribe-fortnightly-edition-notices-mariners.
4. Mariners are requested to notify Toitū Te Whenua LINZ immediately when new or suspected dangers to navigation are discovered or of any shortcomings in charts and publications:

Toitū Te Whenua Land Information New Zealand
 New Zealand Hydrographic Authority
 Radio New Zealand House
 155 The Terrace
 PO Box 5501
 Wellington 6145
 New Zealand

Free phone (NZ): 0800 665 463
 Phone: +64 4 460 0110
 Email: ntm@linz.govt.nz

A reporting form (Hydrographic Note) can be found at the back of the *New Zealand Nautical Almanac* (NZ 204) and each fortnightly NTM edition. This form is also available online at www.linz.govt.nz/sea/maritime-safety-information/reporting-hazard-navigation-h-note for download or it can be completed and submitted via the website.

5. Changes to or defects in aids to navigation should be reported via the nearest coast radio station to:

24-hour Emergency Phone (NZ): 0508 472 269
 Phone (INT): +64 4 577 8030
 Fax: +64 4 577 8038
 Email: rccnz@maritimenz.govt.nz
 Inmarsat-C (POR): 451 200 067

International Chart Series

6. The New Zealand Hydrographic Authority publishes International Charts within the NZ AREA which provides the mariner with worldwide coverage to a uniform specification. As part of this series New Zealand has 30 charts covering its adjacent oceans and seas.

This chart series is available for reprinting by Member States of the International Hydrographic Organization (IHO), with a minimum of modification. Each chart has an international number with the prefix INT, but may also bear a national number allocated by the producer or printer nation to facilitate identification in the national series.

International charts are maintained by NTMs and IHO Member States have undertaken to repeat notices affecting their international charts. Mariners can therefore correct charts from the NTMs of the producer or printer nation concerned.

7. Selected Nautical Publications

<i>Publisher</i>	<i>Title</i>	<i>Obtainable from</i>
Toitū Te Whenua Land Information New Zealand (Toitū Te Whenua LINZ) www.linz.govt.nz	Charts of New Zealand and adjacent waters	Chart retailers
	<i>New Zealand Tidal Stream Atlas (NZ 206)</i>	Chart retailers
	<i>New Zealand Chart Catalogue</i>	Toitū Te Whenua LINZ website
	<i>New Zealand Nautical Almanac (NZ 204) (including Annual New Zealand Notices to Mariners)</i>	Chart retailers Book retailers Selected content available from Toitū Te Whenua LINZ website
	<i>New Zealand Notices to Mariners, fortnightly edition (for correcting charts and publications)</i>	Toitū Te Whenua LINZ website Maritime New Zealand Maritime Safety Inspectors Chart retailers
UK Hydrographic Office www.admiralty.co.uk	<i>Admiralty Sailing Directions, New Zealand Pilot (NP51), Edition 19, 2015</i>	Admiralty Chart agent UKHO website
	<i>The Mariner's Handbook (NP100), Edition 12, 2020</i>	
	<i>How to Keep Your Admiralty Charts Up-To-Date (NP294), Edition 10, 2017</i>	
	<i>Symbols And Abbreviations Used on Admiralty Charts. Chart NP5011 (INT 1), Edition 8, 2020</i>	
	<i>Guide to ENC Symbols used in ECDIS (NP5012), Edition 2, 2015</i>	
Maritime New Zealand (MNZ) www.maritimenz.govt.nz	<i>New Zealand's System of Buoys and Beacons – Revision 2008</i>	Maritime New Zealand MNZ website
	<i>Distress Beacons Save Lives – Revision 2013</i>	
	<i>Radio Handbook – Your Guide to Marine Communication – 2016</i>	
Coastguard Boating Education www.boatingeducation.org.nz	<i>Safety in Small Craft, Revised Edition 2020</i>	Book retailers CBE website Some chart retailers
	<i>Rules of the Road at Sea, 10th Edition, 2018</i>	

Charts And Publications

8. Should you have difficulty in obtaining any charts or publications contact:

Toitū Te Whenua Land Information New Zealand	Maritime New Zealand
New Zealand Hydrographic Authority	PO Box 25620
Radio New Zealand House	Wellington 6146
155 The Terrace	New Zealand
PO Box 5501	Free phone (NZ): 0508 22 55 22
Wellington 6145	Phone: +64 4 473 0111
New Zealand	Fax: +64 4 494 1263
Free phone (NZ): 0800 665 463	Email: enquiries@maritimenz.govt.nz
Phone: +64 4 460 0110	
Email: customersupport@linz.govt.nz	

Official Paper Charts

9. Toitū Te Whenua LINZ produces official nautical charts to aid safe navigation in New Zealand waters and certain areas of Antarctica and the South West Pacific. Using charts safely involves keeping them up-to-date using NTMs.
10. Official nautical charts are available for purchase from approved chart retailers. Contact details for all chart retailers are available from www.linz.govt.nz/sea/charts/paper-charts/where-buy-charts.

A full list of all Permanent, Temporary and Preliminary notices affecting any given chart can be found using the New Zealand Chart Catalogue online database, see paragraph 11 below.

New Zealand Chart Catalogue

11. The online *New Zealand Chart Catalogue* allows mariners to search for all New Zealand ENCs or paper charts by region or chart name/number. The *Chart Catalogue* spatial view is located at <https://www.linz.govt.nz/sea/charts/nz-chart-spatial-view>. The *Chart Catalogue* list view is located at www.linz.govt.nz/sea/charts/nz-chart-catalogue-list-view.

Official Raster Navigational Charts (RNCs) – NZMariner

12. *NZMariner* is the product name of the official Raster Navigational Chart (RNC) folio for New Zealand. It is a digital coloured facsimile of New Zealand paper navigational charts and can be used in Electronic Charting Systems (ECS) and approved Electronic Chart Display and Information Systems (ECDIS).

Product Description

13. *NZMariner* consists of two files;
- An annual Chart file which provides mariners with access to all charts corrected as at the date of publication; and
 - A monthly Update file which provides corrected charts and new charts which have been released since the annual Chart file was published. Users require an annual Chart file as a minimum and cannot use the monthly Update file unless the associated annual Chart file is installed on their ECS/ECDIS.

Users are advised to download and install the latest annual Chart file and Update file to ensure the charts on their ECS/ECDIS are up to date.

Availability

14. *NZMariner* is available at no cost for users to download from www.linz.govt.nz/sea/charts/information-about-charts.

Notification of the availability of the monthly update file is promulgated through the fortnightly editions of *New Zealand Notices to Mariners* (NTMs).

Format, Compatibility

15. *NZMariner* is produced in BSB version 3 format which is similar to that published by the National Oceanic and Atmospheric Administration (NOAA). *NZMariner* data is not encrypted. *NZMariner* is capable of being used in ECS/ECDIS which support BSB version 3 products and is a format widely supported by software manufacturers.

Coverage

16. Toitū Te Whenua LINZ charts currently available in *NZMariner* are listed in the *New Zealand Chart Catalogue*, see paragraph 11 above.

Legal Status

17. See paragraph 23 of this notice.

Official Electronic Navigational Charts (ENCs)

Mariners are strongly advised to read the latest version of the IHO publication S-66 – *Facts about Electronic Charts and Carriage Requirements*, which can be downloaded from www.iho.int.

18. ENCs are specifically designed for use in ECDIS onboard ships. As the New Zealand Hydrographic Authority, Toitū Te Whenua LINZ is responsible for creating and maintaining the official set of ENCs for the New Zealand area of charting responsibility (NZ AREA). The NZ AREA includes the South West Pacific, New Zealand home waters and the Ross Sea region in Antarctica – see the Area of New Zealand Charting and Coverage of Notices to Mariners map at the end of this notice.

ENC 'README.TXT' File

19. The ENC README.TXT file located within the ENC exchange set contains **IMPORTANT SAFETY RELATED INFORMATION**. This file should be consulted to ensure that all related issues are taken into consideration. The latest README.TXT file is also located at www.linz.govt.nz/sea/charts/information-about-charts.

Availability

20. NZ ENCs within New Zealand's home waters are available free-of-charge to mariners by subscribing to the Toitū Te Whenua LINZ NZ ENC Service www.encservice.linz.govt.nz/.

NZ ENCs within the entire NZ AREA are available from chart retailers through the International Centre for ENCs (IC-ENC) www.ic-enc.org and PRIMAR global distribution network www.primar.org. For more information see www.linz.govt.nz/sea/charts.

The release of all new Toitū Te Whenua LINZ ENCs is promulgated through the fortnightly editions of *New Zealand Notices to Mariners* (NTMs). ENC updates are issued for NTMs where appropriate.

Format, Compatibility and Encryption

21. New Zealand ENCs are official electronic charts produced in accordance with the *IHO Transfer Standard for Digital Hydrographic Data, S-57*, Edition 3.1 and protected using the international data security scheme as defined in the *IHO Data Protection Scheme, S-63*, Edition 1.2.0. They are authorised for use in International Maritime Organization (IMO) compliant ECDIS and can also be used in compatible ECS.

Coverage

22. Toitū Te Whenua LINZ ENCs currently available are listed at www.linz.govt.nz/sea/charts/nz-chart-spatial-view and the IHO website: www.iho.int.

Legal Status – Use of Electronic Charts

23. For compliance with New Zealand legal requirements for nautical charts and publications please refer to *Maritime Rules Part 25*, available from www.maritimenz.govt.nz/rules

24. When used in an IMO compliant ECDIS, New Zealand ENCs and *NZMariner* RNCs will allow vessels navigating in New Zealand to meet the strict chart carriage requirements of the *International Convention for Safety of Life at Sea, 1974*, (SOLAS), Chapter V (IMO) and *Maritime Rules Part 25: Nautical Charts and Publications* (MNZ).

Chart Images – TIFF Images of Paper Charts

25. Toitū Te Whenua LINZ provides electronic images of New Zealand's official paper charts in high resolution TIFF format.

Note: Toitū Te Whenua LINZ raster chart images available from www.linz.govt.nz are not geo-referenced, not to be used for navigation and are not corrected for NTMs.

Availability

26. Toitū Te Whenua LINZ's raster chart images are available at no cost for users to download via the online *Chart Catalogue*, see paragraph 11 above.

Note: Data viewed or downloaded from the website is not equivalent to or a replacement for the Official Charts, Notices to Mariners, Tide Table, Light List and Nautical Almanac as specified in MNZ's *Maritime Rules Part 25: Nautical Charts and Publications* (pursuant to Section 36 of the *Maritime Transport Act 1994*).

Reliance on Charts and Associated Publications

27. While every effort is made to ensure the accuracy of the information on New Zealand charts and other publications, it should be appreciated that it may not always be complete and up to date. The mariner must be the final judge of the reliance to be placed on the information given, bearing in mind their particular circumstances, the need of safe and prudent navigation, local pilotage guidance and the judicious use of available navigational aids.

The Use of Charts and Associated Publications

28. Charts should be used with prudence: there are areas where the source data are old, incomplete or of poor quality. Mariners should use the largest scale appropriate for their particular purpose; apart from being the most detailed, the larger scales are usually corrected first. When extensive new information (such as a new hydrographic survey) is received, some months may elapse before it can be fully incorporated in published charts. On small scale charts of ocean areas where hydrographic information is, in many cases, still sparse, charted shoals may be in error as regards position, least depth and extent. Undiscovered dangers may exist, particularly away from well-established routes.

Further Guidance

29. The Admiralty publication, *The Mariner's Handbook* (NP100) gives a fuller explanation of the limitations of charts. All users should study it in their own interest.

AREAS OF NEW ZEALAND CHARTING AND COVERAGE OF NOTICES TO MARINERS

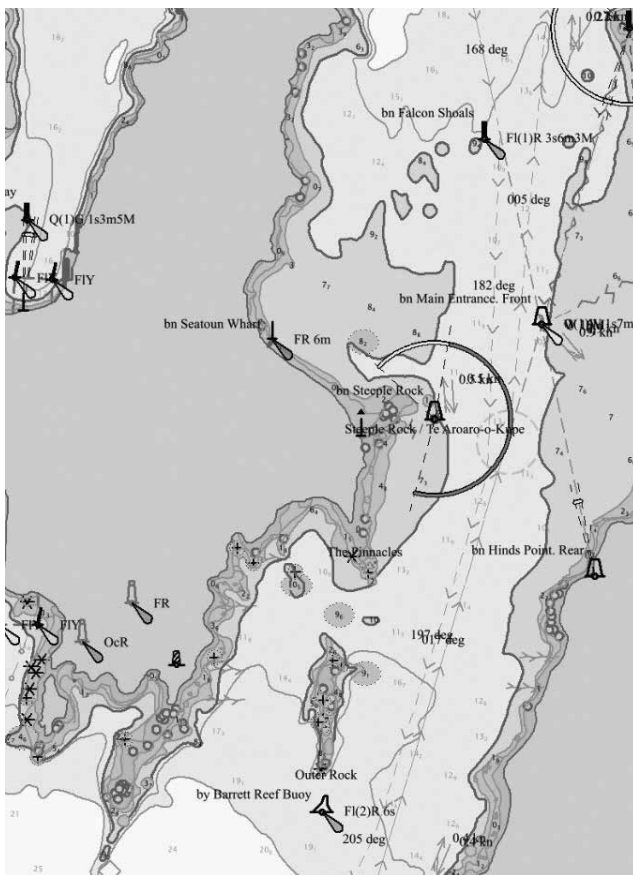


NZ ENC Service

Official NZ Electronic Navigational Charts

Why do I need NZ ENCs?

NZ ENCs are official electronic navigational charts published and authorised by the New Zealand Hydrographic Authority. They contain up-to-date information necessary for safe navigation in NZ waters.



Benefits of using NZ ENCs:

- Updated fortnightly with the latest information
- Contain more information than a paper chart
- Meet Safety of Life At Sea (SOLAS) requirements

NZ ENCs allow your navigation system to:

- Zoom in for greater detail
- Select displays to show only what you need
- Trigger alarms and warnings based on your vessel's draft and preferred look-ahead requirements

Who can use NZ ENCs?

- SOLAS vessels
- State registered commercial vessels
- Recreational boaties

Free for commercial and recreational mariners

www.encservice.linz.govt.nz