

# NEW ZEALAND NOTICES TO MARINERS

## Notices NZ 36 - 36

Published fortnightly by the New Zealand Hydrographic Authority

© Crown Copyright 2021. All rights reserved. Permission is not required to make analogue copies of these Notices but such copies are not to be sold.

---

### CONTENTS

- I [Explanatory Notes.](#)
- II [Miscellaneous Notices.](#)
- III [General Notices.](#)
- IV [Notices to Mariners.](#)
- V [Corrections to New Zealand Publications.](#)
- VI [Corrections to Admiralty Publications.](#)
- VII [Navigational Warnings.](#)

---

New Zealand Notices to Mariners are the authority for correcting New Zealand nautical publications and those charts within New Zealand's area of charting responsibility as shown in [Annual Notice No. 1.](#)

Mariners are requested to immediately inform the New Zealand Hydrographic Authority, Land Information New Zealand, 155 The Terrace, PO Box 5501, Wellington 6145, New Zealand, Phone: 0800 665 463 or +64 (0)4 460 0110, Fax: +64 (0)4 460 0161, email: [ntm@linz.govt.nz](mailto:ntm@linz.govt.nz), of the discovery of new or suspected dangers to navigation, or shortcomings in charts and publications. A copy of a Hydrographic Note, a convenient form on which to send such information, is included at the end of Section VII of the Fortnightly Notices to Mariners.

Changes or defects in aids to navigation should be reported to the Rescue Coordination Centre New Zealand (RCCNZ) via the nearest New Zealand Coastal Maritime Radio Station Phone: +64 (0)4 577 8030, Fax: +64 (0)4 577 8038 or +64 (0)4 577 8041, email: [rccnz@maritimenz.govt.nz](mailto:rccnz@maritimenz.govt.nz).

Copies of these Notices can be obtained from Land Information New Zealand, Maritime New Zealand, Principal Chart Agents at the major ports of New Zealand and the internet: [www.linz.govt.nz](http://www.linz.govt.nz).

## EXPLANATORY NOTES

This edition of Notices to Mariners includes all significant information affecting New Zealand nautical charts and publications which the New Zealand Hydrographic Authority (NZHA) has become aware of since the last edition. All reasonable efforts have been made to ensure the accuracy and completeness of the information, including third party information, on which these updates are based. The NZHA regards third parties from which it receives information as reliable, however the NZHA cannot verify all such information and errors may therefore exist. The NZHA does not accept liability for errors in third party information.

**Correction of Charts and Publications by the User.** New Zealand Notices to Mariners contain important information and should be used to keep the specified charts and publications up to date.

**Charts.** The notices in Section IV give instructions for the correction of charts.

Geographical positions refer to the largest scale chart unless otherwise stated. They are normally given in degrees, minutes and decimals of a minute, but may occasionally quote seconds for convenience when plotting from the graduation of some older-style charts.

Bearings are true, reckoned clockwise from 000° to 359°; those relating to lights are given as seen by an observer from seaward.

Alterations to depth contours, deletion of depths to make way for new detail, etc. are not mentioned unless they have some navigational significance.

Blocks, notes or tracings accompanying notices in Section IV are placed at the end of this publication.

**Permanent Notices.** A [Cumulative List](#) of permanent corrections affecting charts is published on the LINZ website.

**Temporary and Preliminary Notices.** These are indicated by (T) or (P) respectively after the notice number. Charts are not corrected for them before issue; they should be corrected in pencil on receipt.

An asterisk (\*) in a re-issued notice indicates a new or revised entry.

A list of [\(T\) and \(P\) Notices in force](#) is published on the LINZ website.

**New Zealand Publications.** Corrections to New Zealand Publications are given in Section V.

**Light Lists.** The detailed correction to the Light List is given in Section V and may not be published in the same edition as the chart correcting notice. The entire entry for each light is printed, and an asterisk (\*) is shown under the column which contains an amendment. In the case of a new light, an asterisk (\*) appears under all the columns. New and extensively altered entries are intended to be pasted in. It is recommended that a manuscript entry be made for all shorter corrections.

It is emphasised that the [List of Lights](#) is the authority for lights and that many alterations, especially those of a temporary but operational nature, may be promulgated only as corrections to the List of Lights.

## THE USE OF CHARTS AND ASSOCIATED PUBLICATIONS

**Reliance on Charts and Associated Publications.** While every effort is made to ensure the accuracy of the information on New Zealand charts and other publications, it should be appreciated that it may not always be complete and up to date. The mariner must be the final judge of the reliance to be placed on the information given, bearing in mind their particular circumstances, local pilotage guidance and the judicious use of available navigational aids.

**Charts.** Charts should be used with prudence: there are areas where the source data are old, incomplete or of poor quality. The mariner should use the largest scale appropriate for his particular purpose; apart from being the most detailed, the larger scales are usually corrected first. When extensive new information (such as a new hydrographic survey) is received, some months may elapse before it can be fully incorporated in published charts. On small scale charts of ocean areas where hydrographic information is, in many cases, still sparse, charted shoals may be in error as regards position, least depth and extent. Undiscovered dangers may exist, particularly away from well-established routes.

**Symbols.** Details on symbols and abbreviations used on charts are those shown in publication NP5011 (INT 1) Symbols and Abbreviations Used on ADMIRALTY Paper Charts, published by the United Kingdom Hydrographic Office.

**Further guidance.** The Mariner's Handbook (NP100) gives a fuller explanation of the limitations of charts. All users should study it in their own interest.

## MISCELLANEOUS NOTICES

## Index of Product Announcements

Chart No.
NZ 5412
NZ576252
NZ607625
Publication
Nil

## NEW ZEALAND CHARTS. New Edition, Withdrawn Chart

## New Edition Published

<i>Number</i>	<i>Title and other remarks</i>	<i>Scale 1:</i>	<i>Published</i>
<b>NZ 5412</b>	<b>Port of Tauranga</b>	10 000	April 2021
	<i>New edition incorporating updates to aids to navigation and changes to dredged approach channel.</i>		
	<b>Western Channel</b>	20 000	

## Chart Permanently Withdrawn

<i>Number</i>	<i>Published</i>
<b>NZ 5412</b>	August 2019

The chart listed above as withdrawn no longer meets carriage requirements and should be marked as “superseded” and replaced with the new edition listed prior to passage through the area covered.

New Zealand Hydrographic Authority  
HITS 5412/417

**NEW ZEALAND CHARTS. New Electronic Navigation Chart (ENC) Published, Withdrawn ENC**

<i>Number</i>	<i>Title</i>	<i>Published</i>
<b>NZ576252</b>	<b>South Island - West Coast - Neck Cove and Deas Cove</b>	<i>April 2021</i>

**README.TXT File**

The README.TXT file located within the ENC\_ROOT folder of an ENC exchange set contains important safety related information. This file is updated on a regular basis and should be consulted to ensure that all related issues are taken into consideration. The latest README.TXT file is also located on the LINZ website <https://www.linz.govt.nz/sea/charts/information-about-charts#enc>.

**Use of Electronic Navigational Charts**

For compliance with New Zealand legal requirements for nautical charts and publications please refer to *Maritime Rules Part 25*, available from the Maritime New Zealand website: <https://www.maritimenz.govt.nz/rules/part-25/>.

New Zealand Hydrographic Authority  
HITS 7625/3

**ENC Permanently Withdrawn**

<i>Number</i>	<i>On Publication of ENC Cell</i>	<i>Published</i>
<b>NZ607625</b>	NZ576252	May 2011

## GENERAL NOTICES

### ENC/ECDIS DATA PRESENTATION AND PERFORMANCE CHECK IN SHIPS

The International Maritime Organization (IMO) has recently indicated its concerns about operating anomalies identified in some ECDIS that fail to display important new chart features.

The International Hydrographic Organization (IHO) has produced an ENC Data Presentation and Performance Check dataset that allows mariners to check their ECDIS. The check dataset is available through ENC service providers and from the IHO website ([www.iho.int](http://www.iho.int)) which includes instructions.

Mariners are strongly recommended to use the dataset and report the results of their checks to help the IHO identify how the different brands of ECDIS display and handle chart information. Mariners are asked to also inform the IMO, national Hydrographic Offices, ECDIS manufacturers and others, so that they can take any corrective action that may be necessary.

In order to present the most comprehensive report possible to the IMO and to further assist in resolving the issues so far identified, the IHO is keen that as many ships as possible forward their results. Reports on the results can be sent via a form provided with the data or the results can be submitted on-line through a web-form.

All relevant documentation can be downloaded free from the IHO website at: [www.iho.int](http://www.iho.int).

### SOUTH PACIFIC OCEAN. MARITIME SAFETY BROADCASTS – OPTIMUM R/T FREQUENCIES WITHIN NAVAREA XIV

Diagrams showing the optimum R/T calling and working frequency bands and times for navigational warnings broadcast within 1000 nautical miles of Taupo Maritime Radio (ZLM) (38° 50'S., 176° 00'E. approx.) are available as follows:

[Hourly Area Predictions \(HAP\)](#).

[Local Area Mobile Predictions \(LAMP\)](#).

Australian Government IPS Radio and Space Services  
HITS -/1

### SOUTH PACIFIC OCEAN - KINGDOM OF TONGA - TONGA ENTRY RESTRICTIONS

1. Marine and Ports, Ministry of Infrastructure together with Ministry of Health advises that all vessels entering Tonga will be required to use Tongatapu as the first port of entry for border screening prior to re-routing to outer islands.
2. Maritime Security Committee advises that the security of all ports in Tonga is heightened to Security Level 2, in which additional preventative and protective measures are to be implemented.
3. Be advised that all international cruise ships and yachts scheduled to arrive after 19 March 2020 shall not be granted entry into Tonga until further notice.
4. Foreign vessels wishing to transit Tongan waters requiring immediate assistance must contact Nuku'alofa radio for advice via HF & VHF.

Kingdom of Tonga - Ministry of Infrastructure  
HITS 82/1051

**SOUTH PACIFIC OCEAN - NIUE ENTRY RESTRICTIONS**

Entry to ALL yachts, cruise ships, and other sea vessels is NOT permitted with an exception to freight vessels, and vessels in emergency and distress.

Government of Niue  
HITS 845/25

**NEW ZEALAND - MARITIME BORDER ENTRY RESTRICTIONS**

1. The New Zealand Government for the purposes of preventing, and limiting the risk of an outbreak, or the spread, of COVID-19 is (a) restricting which ships may arrive in New Zealand; and (b) putting in place isolation or quarantine requirements for people who arrive in New Zealand by sea.

2. The right of innocent passage through the territorial sea, and transit passage through straits used for international navigation is unaffected.

3. Vessels are not permitted entry to New Zealand unless exempted by the Maritime Border order. A cargo ship that is arriving in New Zealand for the purpose of loading or unloading cargo is an example of one such exemption. New Zealand flagged vessels with New Zealand crews are allowed entry but must adhere to isolation and customs requirements.

4. The current restrictions are detailed in the "COVID-19 Public Health Response (Maritime Border) Order (No2) 2020" which is available at: <http://legislation.govt.nz/regulation/public/2020/0240/latest/LMS403466.html#LMS403543>.

5. These maritime border restrictions remain in force until further notice and may be amended or updated at short notice. It is therefore advisable to access the latest information, which includes advice on when and how to apply for exemptions, on the Ministry of Health's website here: <https://www.health.govt.nz/our-work/diseases-and-conditions/covid-19-novel-coronavirus/covid-19-information-specific-audiences/covid-19-resources-border-sector/covid-19-maritime-sector#exemption>.

6. For those vessels that are permitted entry to New Zealand the New Zealand Government requires an Extended Notice of Arrival (ENA) of intent to travel to New Zealand, a minimum of 168 hours (seven days) prior to arrival. This is an additional requirement to completing the Customs Advance Notice of Arrive (ANA) document 48 hour before arriving. The ENA form is found at: <https://www.customs.govt.nz/globalassets/documents/forms/extended-notice-of-arrival-form.pdf>.

7. The New Zealand Customs Service may notify arriving vessels which first port of arrival is to be used, and may require voyage plans to be adjusted accordingly.

8. Masters and skippers of vessels should note that persons seeking to disembark, (from vessels that are permitted entry), may only do so subject to meeting specific criteria found in the Order.

Maritime New Zealand  
HITS -/108/2

## HAWKE BAY AND SOUTHWEST PACIFIC BASIN - ROCKET LAUNCH AND SPACE DEBRIS

1. A hazardous rocket launch operation will be taking place between 15 and 28 May 2021 inclusive within the following zones:

### Launch Hazard Area

- a. 39° 12'.00S., 177° 51'.00E.
- b. 39° 12'.00S., 178° 00'.00E.
- c. 39° 30'.00S., 178° 27'.00E.
- d. 39° 42'.00S., 178° 15'.00E.
- e. 39° 18'.00S., 177° 48'.00E.
- f. 39° 15'.00S., 177° 48'.00E..

### Space Debris Hazard Area A

- a. 43° 18'.00S., 172° 12'.00W.
- b. 44° 12'.00S., 172° 48'.00W.
- c. 42° 24'.00S., 177° 18'.00W.
- d. 41° 36'.00S., 176° 36'.00W.

### Space Debris Hazard Area B

- a. 46° 48'.00S., 164° 36'.00W.
- b. 46° 12'.00S., 164° 12'.00W.
- c. 47° 30'.00S., 159° 12'.00W.
- d. 48° 06'.00S., 159° 36'.00W.

2. The Launch Hazard Area may be active from:

- a. 15 May: 2000 - 0035
  - b. 16 May: 1935 - 0010
  - c. 17 May: 1915 - 2350
  - d. 18 May: 1850 - 2325
  - e. 19 May: 1825 - 2300
  - f. 20 May: 1800 - 2235
  - g. 21 May: 1735 - 2210
  - h. 22 May: 1715 - 2150
  - i. 23 May: 1650 - 2125
  - j. 24 May: 1625 - 2100
  - k. 25 May: 1600 - 2035
  - l. 26 May: 1535 - 2010
  - m. 27 May: 1515 - 1950
  - n. 28 May: 1450 - 1925
- (All times are NZST)

3. During launch operations, the Launch Hazard Area will be reserved for the purpose of public safety. Navigation is prohibited within the area, in accordance with Hawke's Bay Regional Council Navigation Safety Bylaw 2018 3.8.

4. In the vicinity of Māhia Peninsula, listen to VHF Channel 79 for Rocket Lab Range Information Broadcast.

5. Temporary virtual Automatic Identification System (AIS) aids to navigation (AtoNs) shall be used to clearly identify the perimeter of the Launch Hazard Area during active periods to vessels equipped with AIS.

6. Space debris from the launch is expected in Space Debris Hazard Area A and Space Debris Hazard Area B above.

7. Rocket Lab Range Control can be contacted during launch operations on VHF Channel 07.

8. Due to the frequency of scheduling delays, vessels planning on transiting the area should always check the latest New Zealand Notice to Mariners Edition for updates to the Rocket Lab launch schedule.

9. For further details, please see New Zealand Annual Notice to Mariners, No.19, which can be found in the New Zealand Nautical Almanac (NZ204) and on the LINZ website [www.linz.govt.nz](http://www.linz.govt.nz).

(continued)

**HAWKE BAY AND SOUTHWEST PACIFIC BASIN - ROCKET LAUNCH AND SPACE DEBRIS continued**

10. Mariners are advised to exercise caution when navigating in and around the areas.

11. Cancel this notice when the planned rocket launch operation has ended.

Rocket Lab Ltd.  
HITS 56/73

**NEW ZEALAND – NORTH ISLAND – NORTH TARANAKI BIGHT – PETROLEUM EXPLORATION ACTIVITIES**

1. Pursuant to section 101B of the Crown Minerals Act 1991, the Chief Executive of the Ministry of Business, Innovation and Employment hereby gives notice of a non-interference zone in relation to the MV *Reef Spirit* (call sign ZMG2890) in Petroleum Mining Permit PMP 38161 and the area authorised under section 42A of the Crown Minerals Act 1991.

1.1. The non-interference zone relates to the following activities: exploration operations under the permit, including:

- a) acquisition of seismic data;
- b) deployment and recovery of seismic recording nodes; and
- c) seismic survey equipment loading and unloading.

1.2. The locality of the activities is at the following positions:

- a) 38° 59.58'S., 174° 21.34'E. then north to
- b) 38° 58.06'S., 174° 21.34'E. then northwest to
- c) 38° 57.39'S., 174° 20.97'E. then north to
- d) 38° 56.45'S., 174° 20.97'E. then east to
- e) 58° 56.45'S., 174° 25.99'E. then south to
- f) 38° 57.92'S., 174° 25.99'E. then along the coast to the point of commencement

1.3. The area of the non-interference zone is 250 metres from any point on the outer edge of the MV *Reef Spirit*.

1.4. This notice has effect from 30 March 2021 to 29 May 2021 (both days inclusive).

1.5 Refer to Annual New Zealand Notices to Mariners, No. 16A, which can be found in the New Zealand Nautical Almanac (NZ 204) and on the LINZ website <https://www.linz.govt.nz/>.

Chief Executive of the Ministry of Business, Innovation and Employment  
HITS 43/74

**NEW ZEALAND – NORTH ISLAND – NORTH TARANAKI BIGHT – PETROLEUM EXPLORATION ACTIVITIES**

1. Pursuant to section 101B of the Crown Minerals Act 1991, the Chief Executive of the Ministry of Business, Innovation and Employment hereby gives notice of a non-interference zone in relation to the MV *Christa Maria* (call sign ZMR6626) in Petroleum Mining Permit PMP 38161 and the area authorised under section 42A of the Crown Minerals Act 1991.

1.1. The non-interference zone relates to the following activities: exploration operations under the permit, including:

- a) acquisition of seismic data;
- b) deployment and recovery of seismic recording nodes; and
- c) seismic survey equipment loading and unloading.

(continued)



**NEW ZEALAND – NORTH ISLAND – NORTH TARANAKI BIGHT – PETROLEUM EXPLORATION ACTIVITIES continued**

1.2. The locality of the activities is at the following positions:

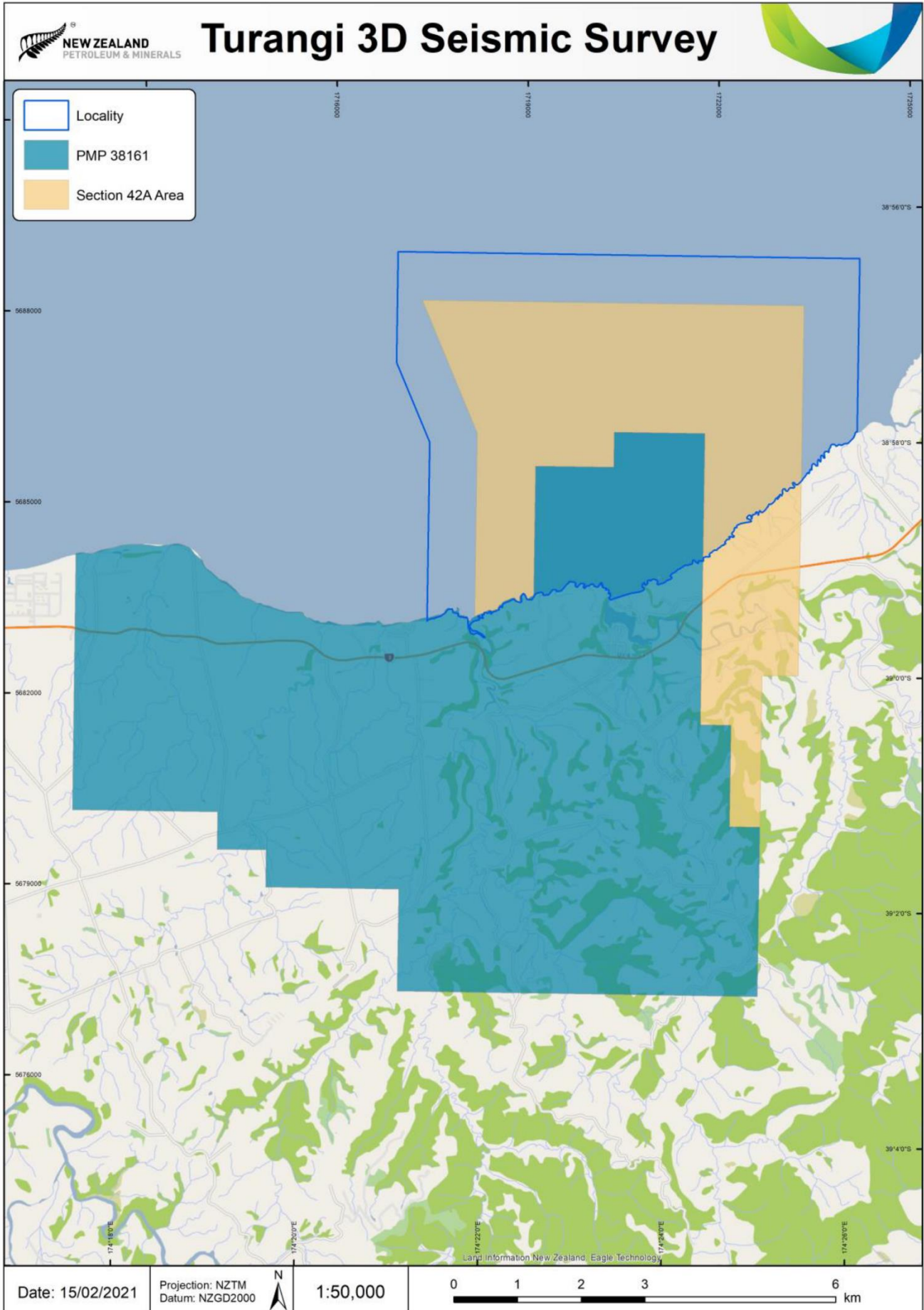
- a) 38° 59.58'S., 174° 21.34'E. then north to
- b) 38° 58.06'S., 174° 21.34'E. then northwest to
- c) 38° 57.39'S., 174° 20.97'E. then north to
- d) 38° 56.45'S., 174° 20.97'E. then east to
- e) 38° 56.45'S., 174° 25.99'E. then south to
- f) 38° 57.92'S., 174° 25.99'E. then along the coast to the point of commencement

1.3. The area of the non-interference zone is 250 metres from any point on the outer edge of the MV *Christa Maria*.

1.4. This notice has effect from 30 March 2021 to 29 May 2021 (both days inclusive).

1.5 Refer to Annual New Zealand Notices to Mariners, No. 16A, which can be found in the New Zealand Nautical Almanac (NZ 204) and on the LINZ website <https://www.linz.govt.nz/>.

Chief Executive of the Ministry of Business, Innovation and Employment  
HITS 43/74



## NOTICES TO MARINERS

## Index of Charts Affected

Chart No.	Notices to Mariners
NZ 54	36(T)
NZ 541	36(T)
NZ 5411	36(T)
NZ 5412	36(T)
NZ 5413	36(T)

**NZ 36(T)/21      NEW ZEALAND - North Island - East Coast - Bay of Plenty - Tauranga Harbour Entrance. Aids to Navigation**

1. Former notice - NZ 26(P)/21 is cancelled.
2. Cancel this notice on receipt.

**Charts formerly affected: NZ 54, NZ 541, NZ 5411, NZ 5412, NZ 5413**

New Zealand Hydrographic Authority  
HITS 5412/419

**CORRECTIONS TO NEW ZEALAND PUBLICATIONS**Nil

---

**VII****CORRECTIONS TO ADMIRALTY PUBLICATIONS**

The New Zealand Hydrographic Authority no longer publishes corrections to Admiralty Publications as part of the fortnightly New Zealand Notice to Mariners Edition. For information regarding these publications please refer to:  
<https://www.admiralty.co.uk/publications>.

---

**VII****NAVIGATIONAL WARNINGS**

The New Zealand Hydrographic Authority no longer publishes navigational warnings for NAVAREA XIV and NZ Coastal Area Z as part of the fortnightly New Zealand Notice to Mariners Edition.

New Zealand navigational warnings are available at: <https://www.maritimenz.govt.nz/commercial/safety/maritime-radio/navigational-warnings.asp>.

Australian navigational warnings are available at: <https://www.amsa.gov.au/safety-navigation/navigation-systems/maritime-safety-information-database>.

As these lists may not be up to date it is not an authoritative source of navigational warnings so Masters/Captains are still required to receive navigational warnings from the appropriate International Maritime Organization (IMO) or World Meteorological Organization (WMO) approved Global Maritime Distress and Safety System (GMDSS) broadcast service i.e. the International SafetyNET system.

---

## HYDROGRAPHIC NOTE

(For instructions, see next page)

New Zealand Hydrographic Authority  
Land Information New Zealand  
Radio New Zealand House  
155 The Terrace  
PO Box 5501  
Wellington 6145  
New Zealand

Tel: 0800 665 463 or +64 (0)4 460 0110  
Email: [ntm@linz.govt.nz](mailto:ntm@linz.govt.nz)

Date ..... Ref. No. ....

Name and address of ship or sender  
.....  
.....

Tel/Email of sender .....

General locality .....

Subject .....

Position. Lat. .... Long. ....

Position fixing system used .....

Datum .....

Paper Chart/ENC affected ..... Edition .....

Dated .....

Latest Notice to Mariners held .....

Publications affected (Edition No. and date of latest supplement, page no., ID no. etc).....

Details:

A replacement copy of Chart No. ....  
is required (see Instruction 4).

Signature of observer/reporter .....

# HYDROGRAPHIC NOTE

## Forwarding Information for Charts and Hydrographic Publications

**Note:** An acknowledgement of receipt will be sent and the information then used to the best advantage, which may mean immediate action or inclusion in a revision in due course. When a Notices to Mariners is issued, the sender's ship or name is quoted as authority unless (as sometimes happens) the information is also received in a foreign Notices to Mariners. An explanation of the use of contributions from all parts of the world would be too greater task and a further communication should only be expected when the information is of outstanding value or has unusual features.

### INSTRUCTIONS:

1. Mariners are requested to notify New Zealand Hydrographic Authority, Land Information New Zealand, 155 The Terrace, PO Box 5501, Wellington 6145, New Zealand, when new or suspected dangers to navigation are discovered, changes observed in aids to navigation, or corrections to publications seem to be necessary. The *Admiralty* publication, *The Mariner's Handbook* (NP100), Chapter 4, gives general instructions.
2. This form and its instructions have been designed to help both the sender and the recipient. It should be used, or followed, closely, whenever appropriate. Copies of this form may be obtained gratis from the New Zealand Hydrographic Authority at the address above, or in PDF format directly from the LINZ website, [www.linz.govt.nz/sea](http://www.linz.govt.nz/sea).
3. When a position is defined by sextant angles or bearings (true or magnetic being specified) more than two should be used in order to provide a check. Distances observed by radar should be quoted. However, when there is a series of fixes along a ship's course, only the method of fixing and the objects used need to be indicated. Latitude and longitude should only be used specifically to position the details when they have been fixed by astronomical observations or GPS and a full description of the method, equipment and datum used should be given.
4. Paper Charts: A cutting from the largest scale paper chart is the best medium for forwarding details, the alterations and additions being shown thereon in red. When requested, a new copy will be sent in replacement of a chart that has been used to forward information, or when extensive observations have involved defacement of the observer's chart. If it is preferred to show the amendments on a tracing of the largest scale chart (rather than the chart itself) these should be in red as above, but adequate detail from the chart must be traced in black ink to enable the amendments to be fitted correctly.  
Electronic Navigational Charts (ENCs): A screen dump of the largest scale usage band ENC with the alterations and additions being shown thereon in red.
5. When soundings are obtained, *The Mariners Handbook* (NP100) should be consulted. The echo sounding trace should be marked with times, depths, etc., and forwarded with the report. It is important to state whether the echo sounder is set to register depths below the surface, or below the keel; in the latter case the vessel's draught should be given. Time and date should be given in order that corrections for the height of the tide may be made where necessary. The make, name, and type of echo sounder set should also be given.
6. Modern echo sounders frequently record greater depths than the set's nominal range, e.g. with a set whose maximum is 500m a trace appearing at 50m may in fact be 550m or even 1,050m. Erroneous deep soundings beyond the sets nominal range can usually be recognised by the following:
  - (a) The trace being weaker than normal for the depth registered
  - (b) The trace appearing to pass through the transmission line
  - (c) The "feathery" nature of the trace.
7. Reports which cannot be confirmed or are lacking in certain details should not be withheld. Shortcomings should be stressed and any firm expectation of being able to check the information on a succeeding voyage should be mentioned.
8. Reports of shoal soundings, uncharted dangers and navigational aids out of order should, at the mariner's discretion, also be made by radio to the nearest coast radio station. The draught of modern tankers is such that any uncharted depth under 30 metres or 15 fathoms may be of sufficient importance to justify a radio message.