

**NZ 180/07 NEW ZEALAND – North Island – West Coast – Cape Egmont Westwards – FPSO Umuroa and Protected Area.**

**Chart NZ 21 (INT 641) [ 131/07 ]**

Insert  FPSO 39° 25'.7S., 173° 14'.2E.

Delete  115 Wells 39° 25'.0S., 173° 12'.3E.


**Chart NZ 23 (INT 640) [ 131/07 ]**

Insert  FPSO 39° 25'.7S., 173° 14'.2E.

Delete  115 Wells 39° 25'.0S., 173° 12'.3E.

**Chart NZ 25 (INT 648) [ 131/07 ]**

Insert  FPSO 39° 25'.7S., 173° 14'.2E.

Delete  115 Wells 39° 25'.0S., 173° 12'.3E.

**Chart NZ 45 [ 124/07 ]**

Insert the accompanying block, showing FPSO, wells, Safety Zone and Protected Area, centred on 39° 23'.8S., 173° 15'.0E.

Substitute accompanying note, Offshore Gas Production Structures & Gas Pipeline Areas, for existing note below chart title

**Chart NZ 48 [ 131/07 ]**

Insert the accompanying block, showing FPSO, wells, Safety Zone and Protected Area, centred on 39° 31'.8S., 173° 17'.1E.

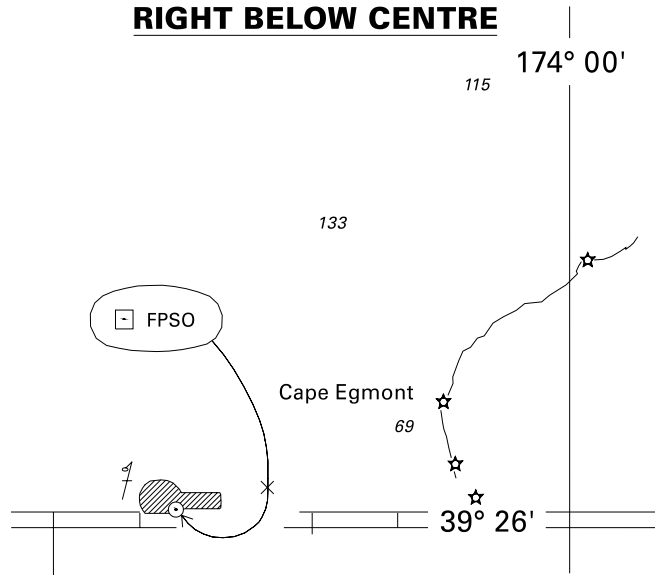
Substitute accompanying note, Offshore Gas Production Structures & Gas Pipeline Areas, for existing note below chart title

**Chart NZ 443 [ 138/07 ]**

Insert  joining (chart edge) 39° 25'.41S., 173° 15'.00E  
 39° 25'.85S., 173° 15'.29E  
 39° 26'.02S., 173° 15'.33E  
 39° 26'.27S., 173° 15'.14E  
 (chart edge) 39° 26'.37S., 173° 15'.00E

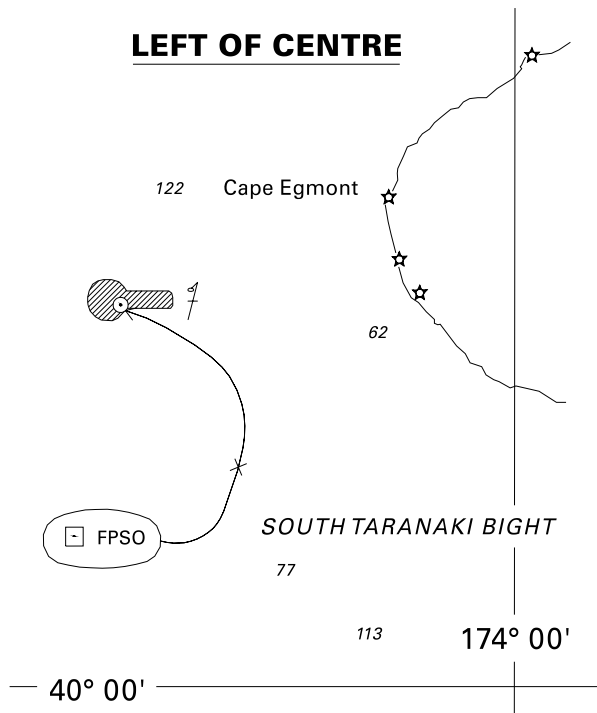
Substitute accompanying note, Offshore Gas Production Structures & Gas Pipeline Areas, for existing note below chart title

**RIGHT BELOW CENTRE**

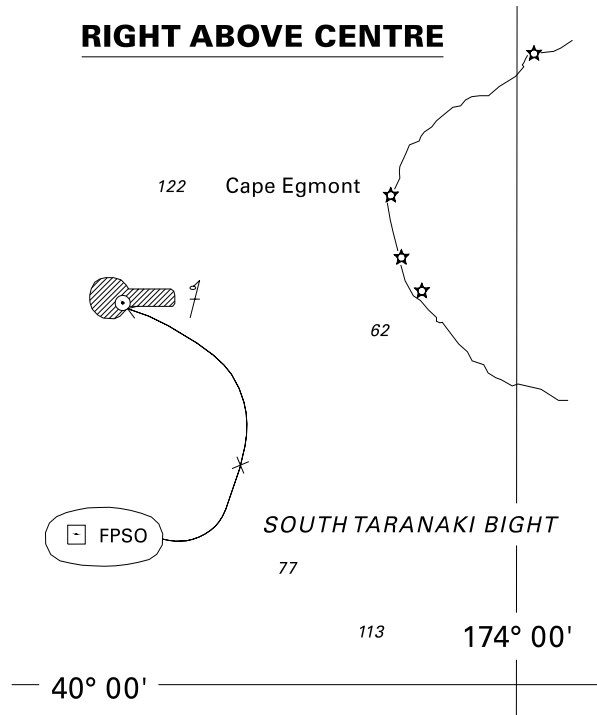


<i>Issued as a guide to chart correction.</i>		<i>Use in conjunction with the appropriate NZ Notice to Mariners.</i>	
<b>LAST CORRECTION</b>	<b>NZ NTM No.</b>	<b>CHART No.</b>	
<b>NZ 131/07</b>	<b>NZ 180/07</b>	<b>NZ 21 (INT 641)</b>	

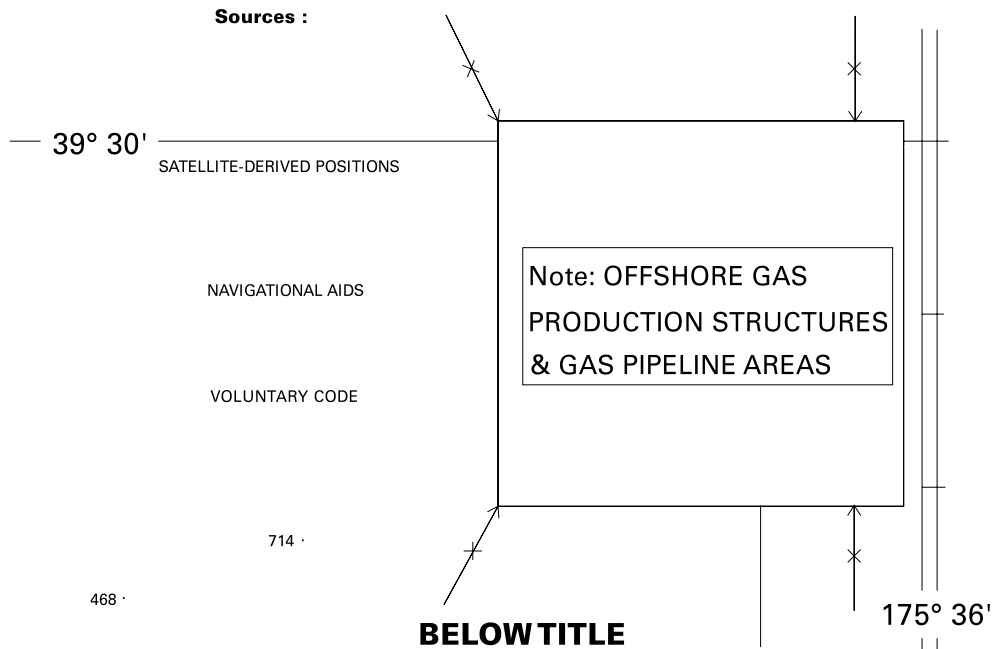
**LEFT OF CENTRE**



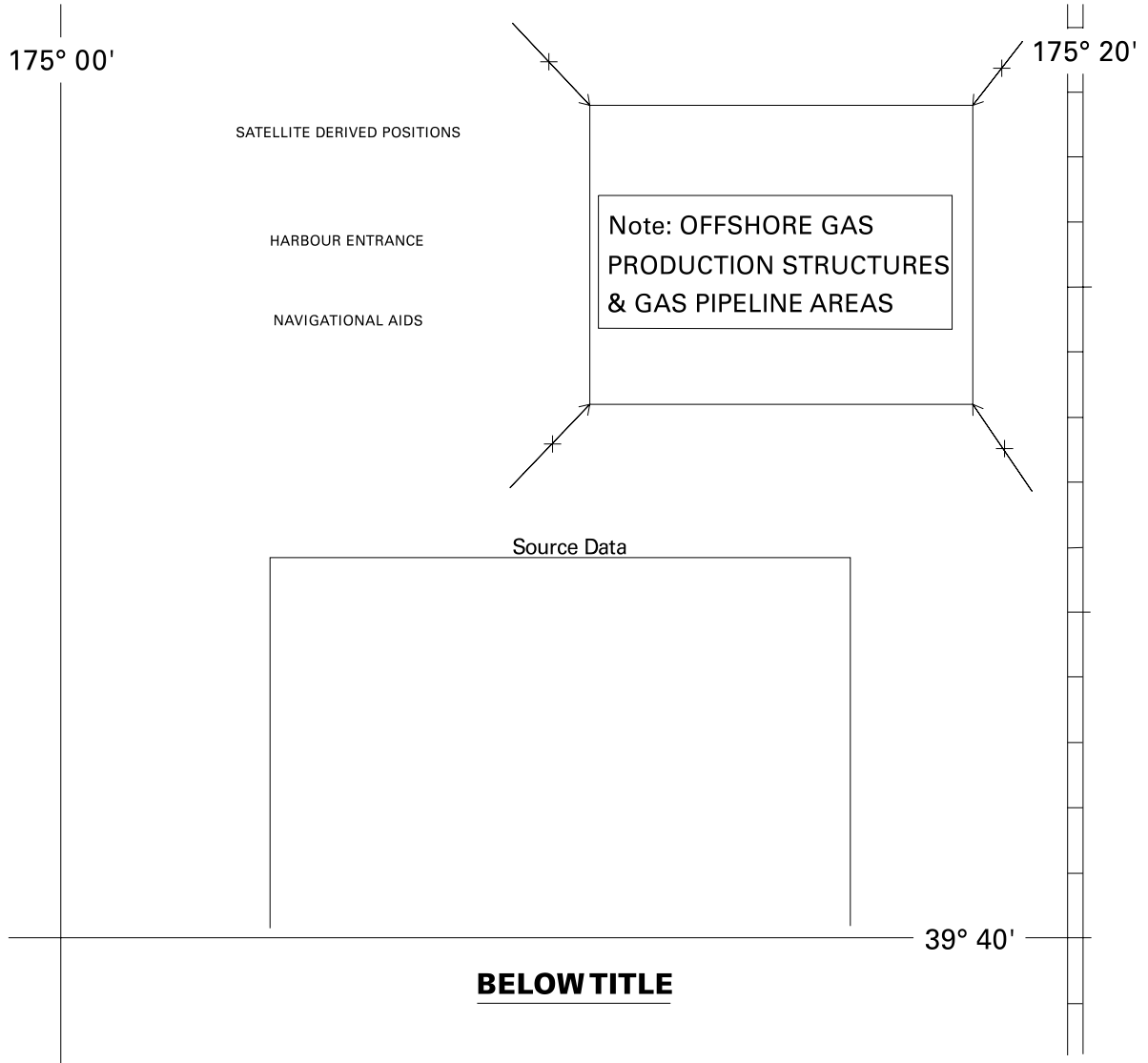
<i>Issued as a guide to chart correction.</i>		<i>Use in conjunction with the appropriate NZ Notice to Mariners.</i>	
<b>LAST CORRECTION</b>	<b>NZ NTM No.</b>	<b>CHART No.</b>	
<b>NZ 131/07</b>	<b>NZ 180/07</b>	<b>NZ 23 (INT 640)</b>	



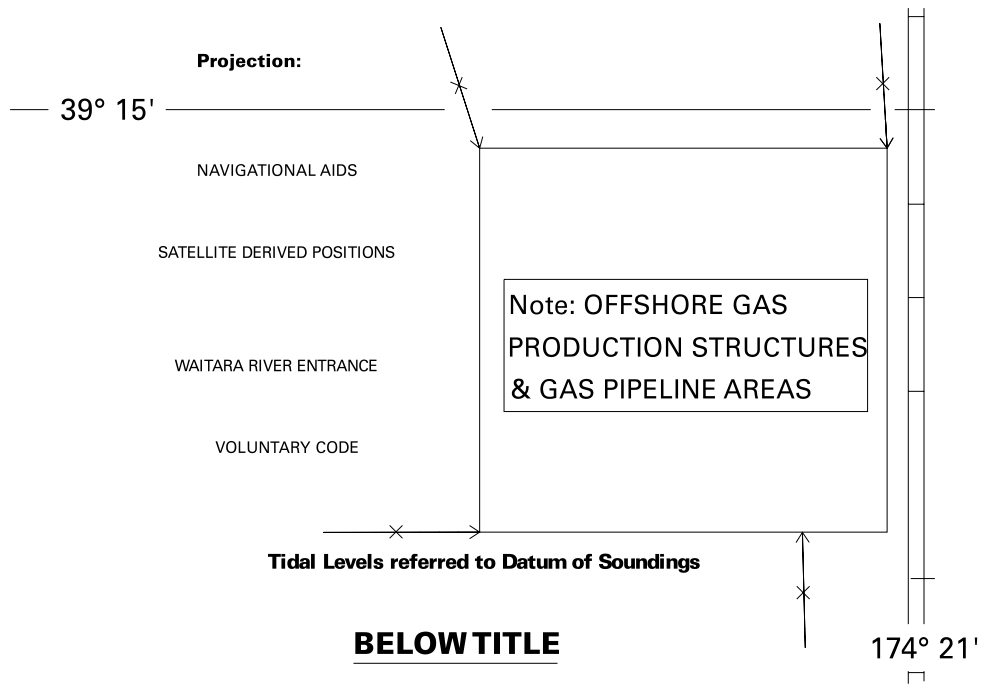
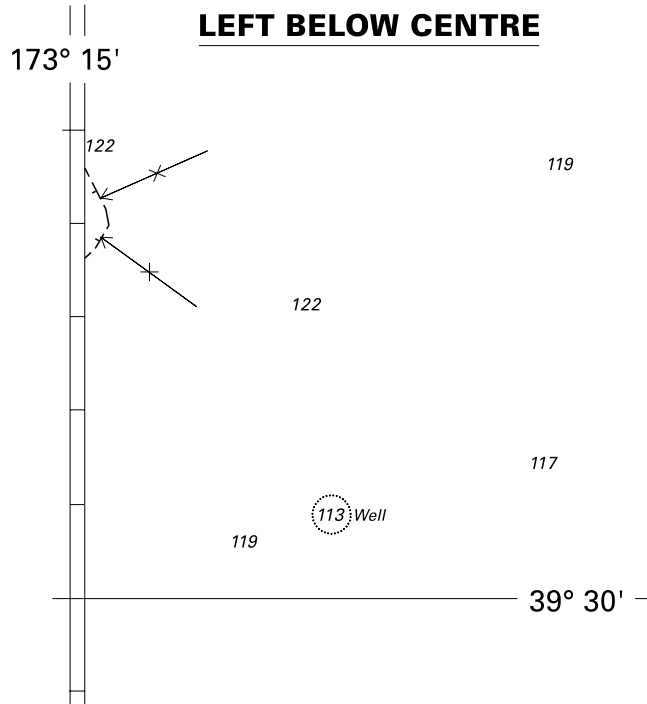
<i>Issued as a guide to chart correction.</i>		<i>Use in conjunction with the appropriate NZ Notice to Mariners.</i>
<b>LAST CORRECTION</b>	<b>NZ NTM No.</b>	<b>CHART No.</b>
<b>NZ 131/07</b>	<b>NZ 180/07</b>	<b>NZ 25 (INT 648)</b>



<i>Issued as a guide to chart correction.</i>		<i>Use in conjunction with the appropriate NZ Notice to Mariners.</i>
<b>LAST CORRECTION</b>	<b>NZ NTM No.</b>	<b>CHART No.</b>
<b>NZ 131/07</b>	<b>NZ 180/07</b>	<b>NZ 48</b>



<i>Issued as a guide to chart correction.</i>		<i>Use in conjunction with the appropriate NZ Notice to Mariners.</i>	
<b>LAST CORRECTION</b>	<b>NZ NTM No.</b>	<b>CHART No.</b>	
<b>NZ 124/07</b>	<b>NZ 180/07</b>	<b>NZ 45</b>	



<i>Issued as a guide to chart correction.</i>		<i>Use in conjunction with the appropriate NZ Notice to Mariners.</i>	
<b>LAST CORRECTION</b>	<b>NZ NTM No.</b>	<b>CHART No.</b>	
<b>NZ 138/07</b>	<b>NZ 180/07</b>	<b>NZ 443</b>	

Chart No. NZ 45

OFFSHORE GAS PRODUCTION STRUCTURES & GAS PIPELINE AREAS

**Safety Zones.** The unauthorised entry of any vessel into the 500 metre safety zones around Maui A & B production platforms and the FPSO Umuroa is prohibited.

**Protected Area.** All vessels are prohibited from anchoring or fishing within the Protected Area of the gas pipeline to Maui A & B and the FPSO Umuroa.

**Restricted Area.** All New Zealand vessels are prohibited from, and other vessels warned against, anchoring or fishing within the Restricted Area (*beyond the Territorial Sea Outer Limit*) of gas pipelines.

The gas pipelines from Maui A & B production platforms contain flammable gas under high pressure; any vessel damaging them would face an immediate fire hazard.

Chart No. NZ 48

OFFSHORE GAS PRODUCTION STRUCTURES & GAS PIPELINE AREAS

**Safety Zones.** The unauthorised entry of any vessel into the 500 metre safety zones around Maui A & B and Pohokura B production platforms and the FPSO Umuroa is prohibited.

**Protected Area.** All vessels are prohibited from anchoring or fishing within the Protected Area of the gas pipeline to Maui A & B and Pohokura B production platforms and the FPSO Umuroa.

**Restricted Area.** All New Zealand vessels are prohibited from, and other vessels warned against, anchoring or fishing within the Restricted Area (*beyond the Territorial Sea Outer Limit*) of gas pipelines.

The gas pipelines from Maui A & B and Pohokura B production platforms contain flammable gas under high pressure; any vessel damaging them would face an immediate fire hazard.

Chart No. NZ 443

OFFSHORE GAS PRODUCTION STRUCTURES & GAS PIPELINE AREAS

**Safety Zones.** The unauthorised entry of any vessel into the 500 metre safety zones around Maui A & B and Pohokura B production platforms and the FPSO Umuroa is prohibited.

**Protected Area.** All vessels are prohibited from anchoring or fishing within the Protected Area of the gas pipeline to Maui A & B and Pohokura B production platforms and the FPSO Umuroa.

**Restricted Area.** All New Zealand vessels are prohibited from, and other vessels warned against, anchoring or fishing within the Restricted Area (*beyond the Territorial Sea Outer Limit*) of gas pipelines.

The gas pipelines from Maui A & B and Pohokura B production platforms contain flammable gas under high pressure; any vessel damaging them would face an immediate fire hazard.

To accompany New Zealand Notice to Mariners No. 180/07. Image size (mm) 83.8 x 81.1

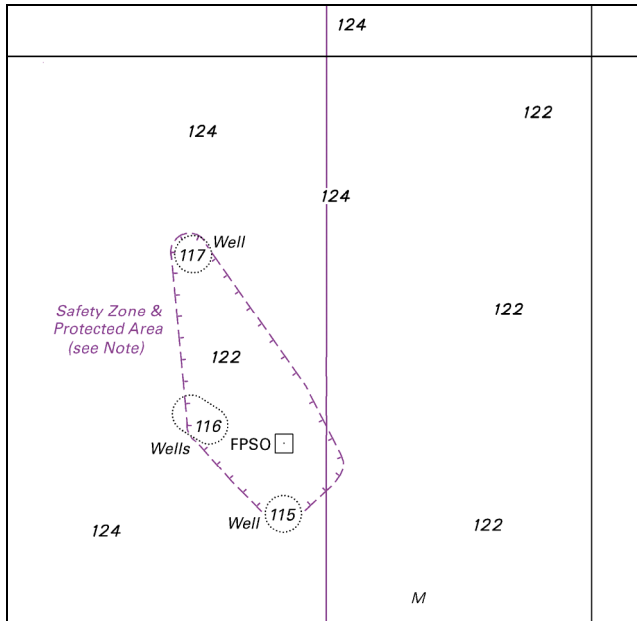


Chart No. NZ 45

To accompany New Zealand Notice to Mariners No. 180/07. Image size (mm) 136.9 x 99.1

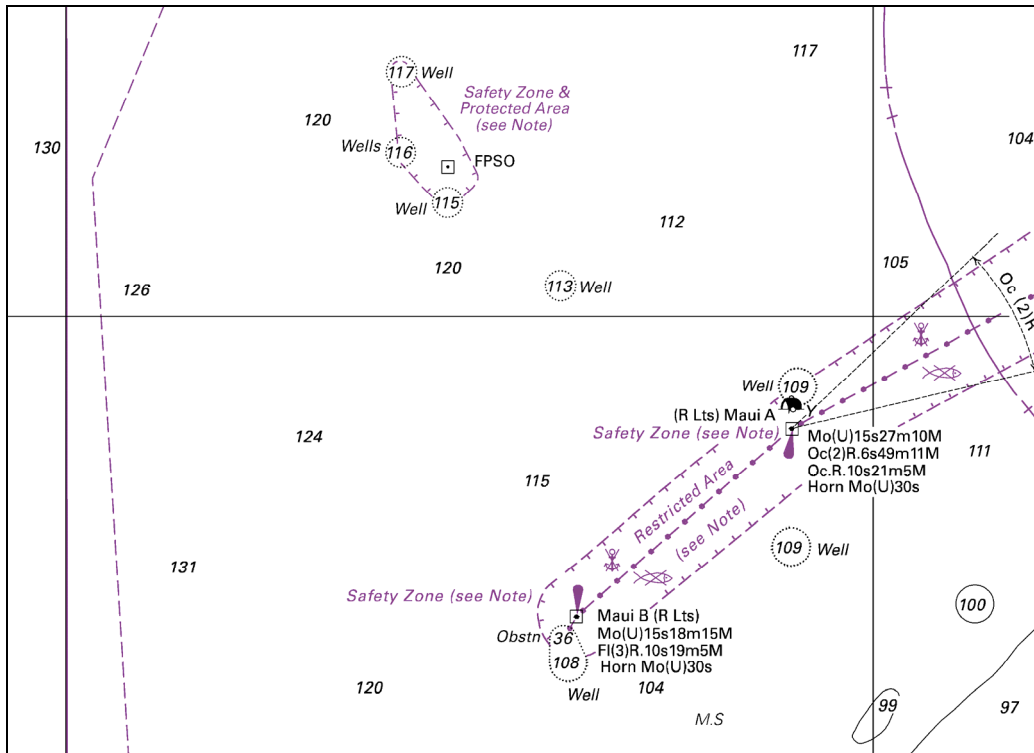


Chart No. NZ 48