

NZ 130/10 NEW ZEALAND – North Island – West Coast – Port Taranaki – Pilot Boarding Station.

Chart NZ 43 [43/09]

Move  from: 39° 01'.4S., 174° 02'.1E.
 to: 39° 00'.5S., 174° 02'.5E.

Chart NZ 443 [NE May 2010]

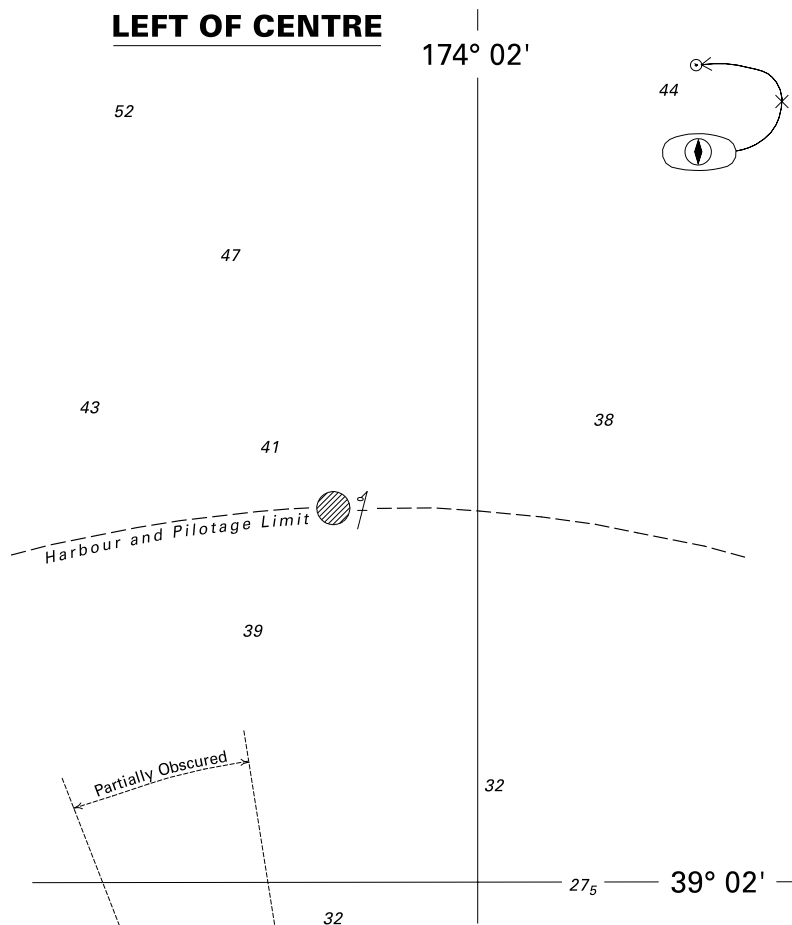
Move  from: 39° 01'.36S., 174° 01'.93E.
 to: 39° 00'.54S., 174° 02'.50E.

Chart NZ 4432 [67/09]

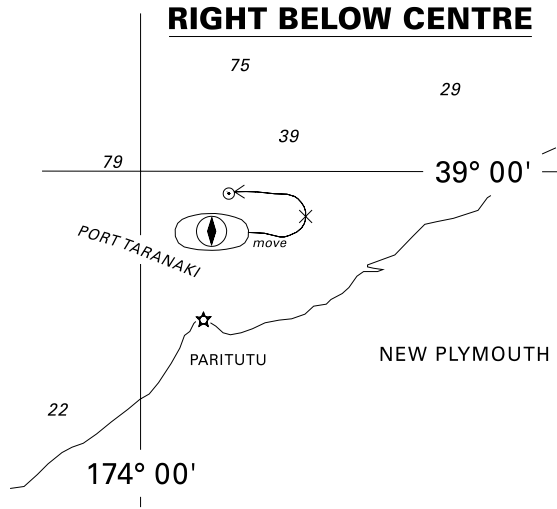
Insert  39° 00'.54S., 174° 02'.50E.

Delete  39° 01'.34S., 174° 01'.67E.

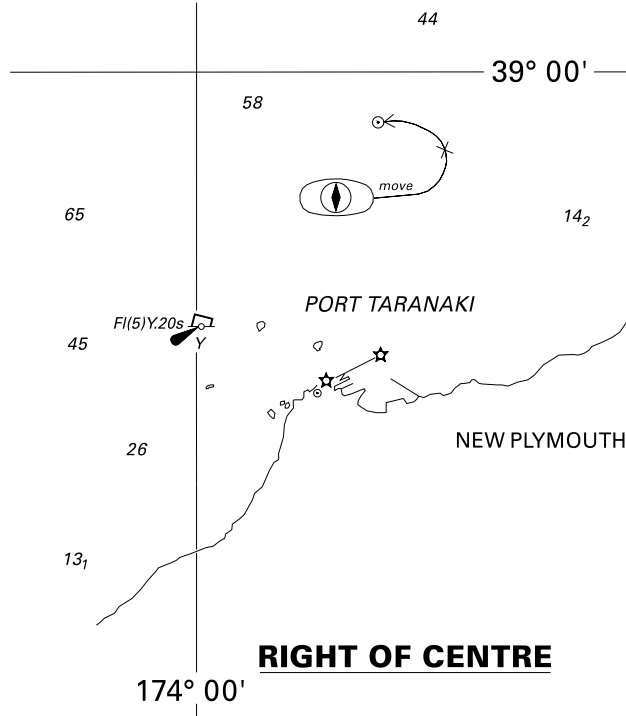
Port Taranaki Ltd
 NI 145/2010



<i>Issued as a guide to chart correction.</i>		<i>Use in conjunction with the appropriate NZ Notice to Mariners.</i>	
LAST CORRECTION	NZ NTM No.	CHART No.	
NZ 67/09	NZ 130/10	NZ 4432	



<i>Issued as a guide to chart correction.</i>		<i>Use in conjunction with the appropriate NZ Notice to Mariners.</i>	
LAST CORRECTION	NZ NTM No.	CHART No.	
NZ 43/09	NZ 130/10	NZ 43	



<i>Issued as a guide to chart correction.</i>		<i>Use in conjunction with the appropriate NZ Notice to Mariners.</i>	
LAST CORRECTION	NZ NTM No.	CHART No.	
NE May 2010	NZ 130/10	NZ 443	