

**NZ 145/12 NEW ZEALAND – South Island – North Coast – Marlborough Sounds – Pilot Boarding Points, Light, Rock, Buoy.**

*Former notices – NZ 149(P)/11 and NZ109(P)/12 are cancelled.*

**Chart NZ 46 [174/10]**

Insert	ⓐ <i>Alpha (see Note)</i>	41° 04'.62S.,	174° 18'.92E.
	ⓑ <i>Bravo (see Note)</i>	41° 03'.65S.,	174° 19'.85E.
	ⓓ	41° 15'.26S.,	174° 22'.16E.
	ⓔ <i>Fl(5)Y.20s</i> Y	41° 12'.95S.,	174° 20'.96E.

accompanying note, QUEEN CHARLOTTE SOUND /  
 TOTARANUI PILOT BOARDING STATIONS

Left below chart title

Delete	ⓓ	41° 05'.95S.,	174° 17'.46E.
--------	---	---------------	---------------

**Chart NZ 463 [23/12]**

Insert	ⓐ <i>Alpha (see Note)</i>	41° 04'.62S.,	174° 18'.92E.
	ⓑ <i>Bravo (see Note)</i>	41° 03'.65S.,	174° 19'.85E.
	ⓓ	41° 15'.26S.,	174° 22'.16E.
	ⓔ <i>Fl(5)Y.20s</i> Y	41° 12'.95S.,	174° 20'.96E.

accompanying note, QUEEN CHARLOTTE SOUND  
 (TOTARANUI) PILOT BOARDING STATIONS

below chart title

Delete	ⓓ	41° 05'.86S.,	174° 17'.23E.
--------	---	---------------	---------------

**Chart NZ 615 [80/12]**

Insert	ⓐ <i>Alpha (see Note)</i>	41° 04'.62S.,	174° 18'.92E.
	ⓑ <i>Bravo (see Note)</i>	41° 03'.65S.,	174° 19'.85E.
	ⓓ	41° 15'.26S.,	174° 22'.16E.
	ⓔ <i>Fl(5)Y.20s</i> Y	41° 12'.95S.,	174° 20'.96E.

accompanying note, QUEEN CHARLOTTE SOUND PILOT  
 BOARDING STATIONS

right of chart title

Delete	ⓓ	41° 05'.86S.,	174° 17'.24E.
--------	---	---------------	---------------

*continued*

*continued*

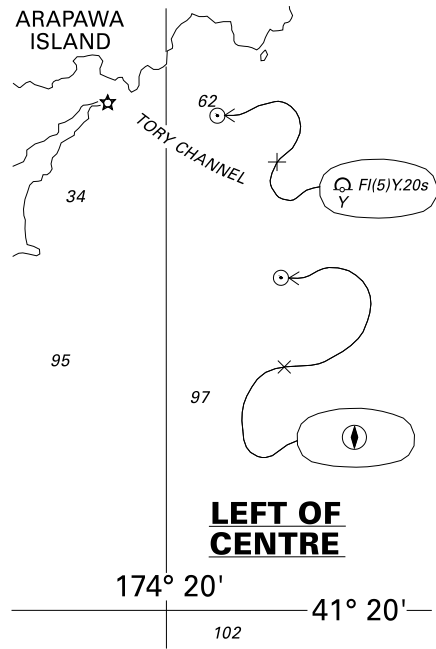
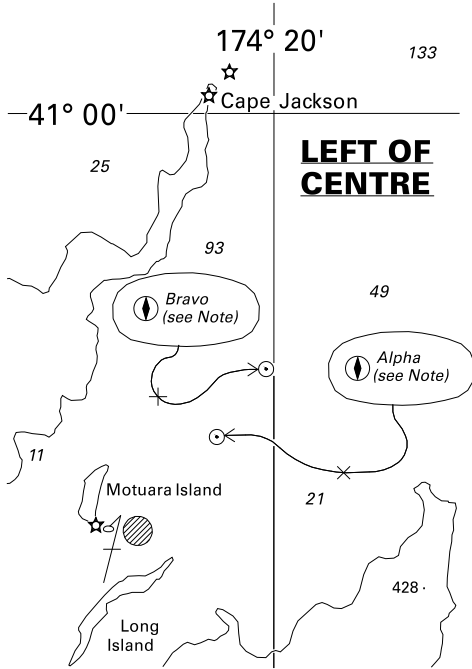
**Chart NZ 6153 [ 238/11 ]**

Insert		41° 15'.26S., 174° 22'.16E.
	 ★ Fl.G.3s2M G	(a) 41°12'.43S., 174°18'.29E.
	 Y Fl(5)Y.20s	41° 12'.95S., 174° 20'.96E.
Delete		41° 05'.96S., 174° 17'.25E.
		adjacent to (a) above

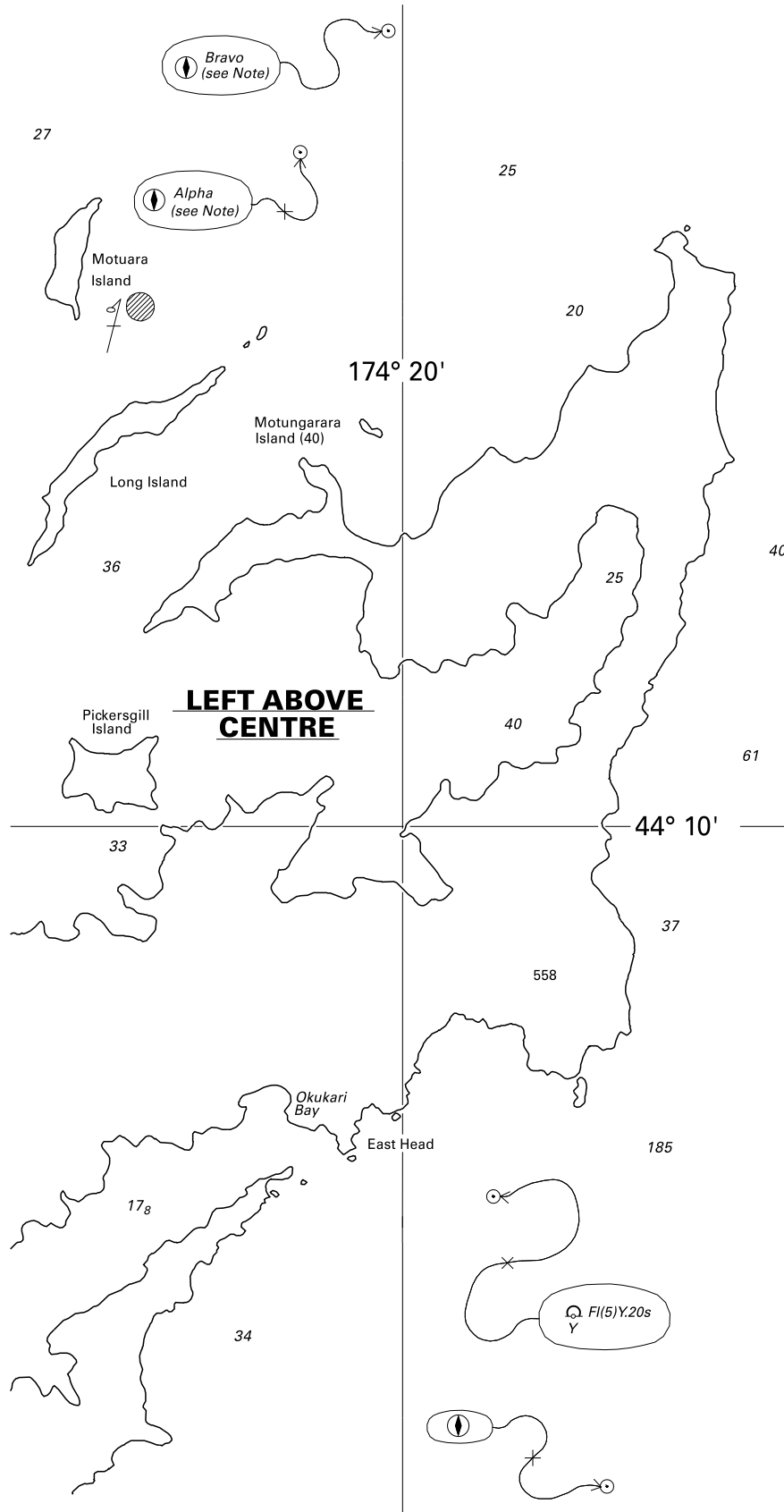
**Chart NZ 6154 [ NE Mar 11 ]**

Insert	 ★ Wheki Rock Fl.G.3s2M G	(a) 41°12'.43S., 174°18'.29E.
	 Y Fl(5)Y.20s	41° 12'.95S., 174° 20'.96E.
Delete		adjacent to (a) above

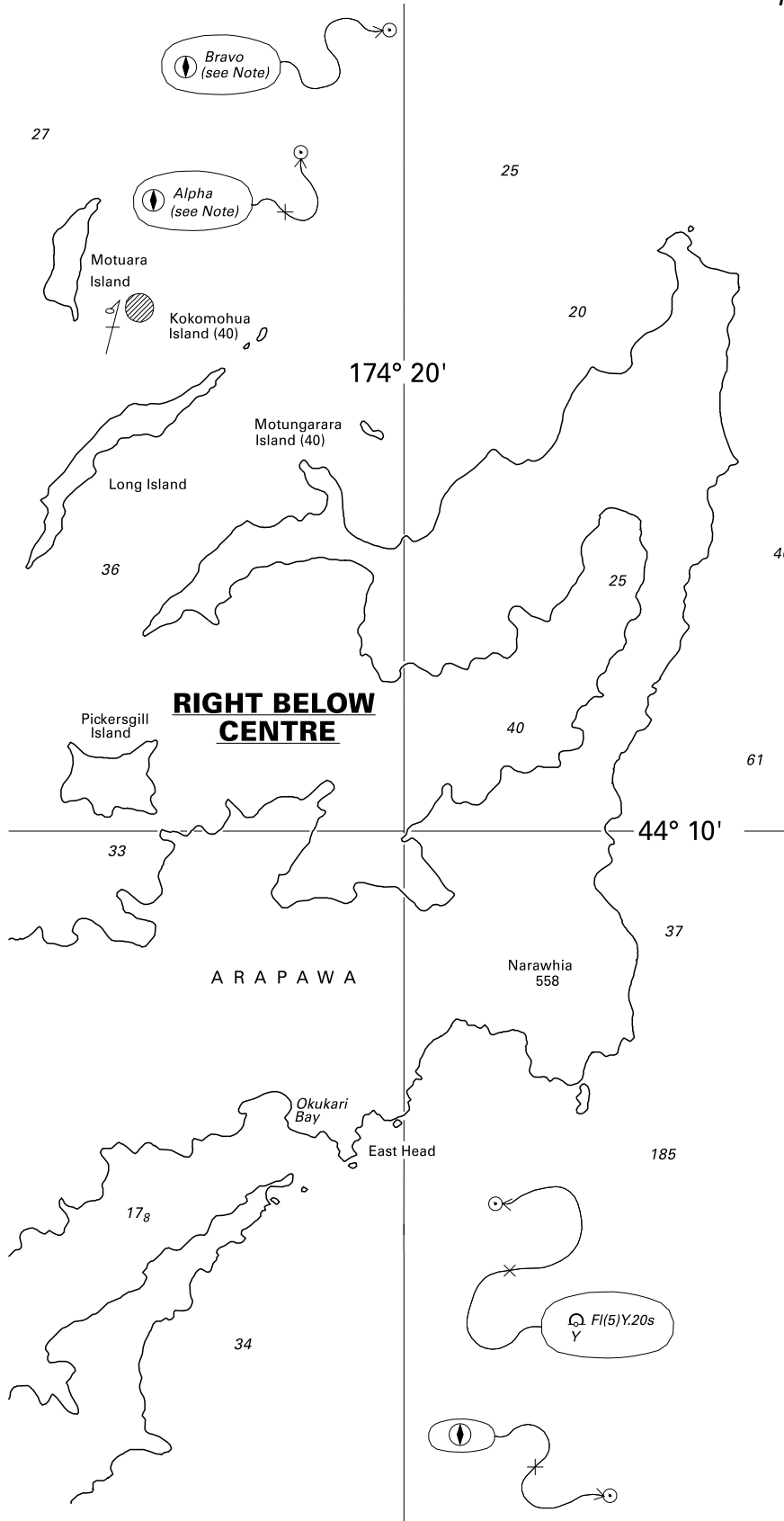
Marlborough District Council  
 NZ light List K 4264.5  
 NI 164/2012



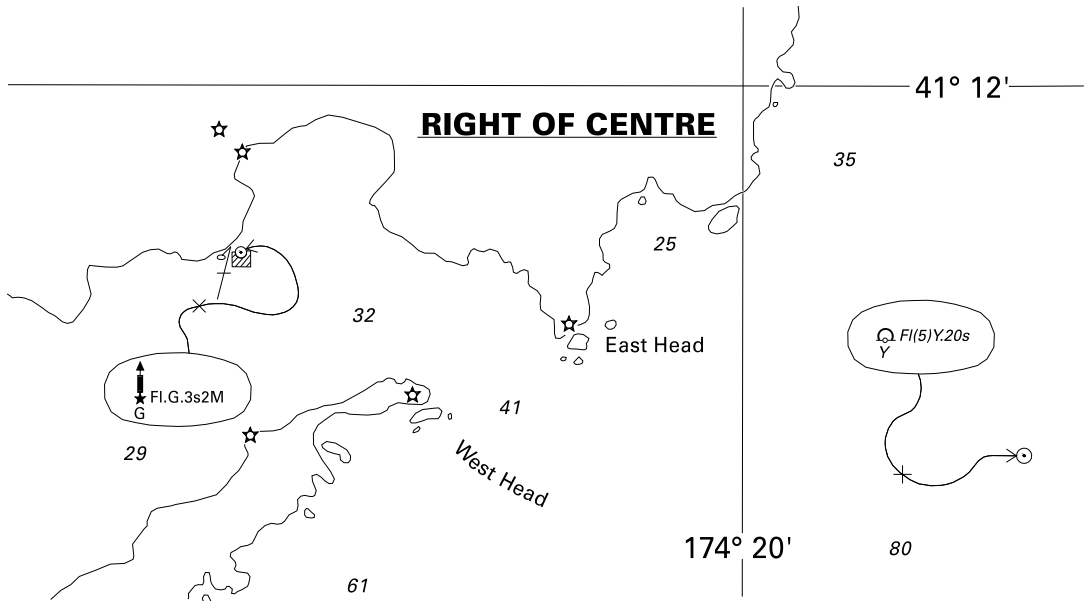
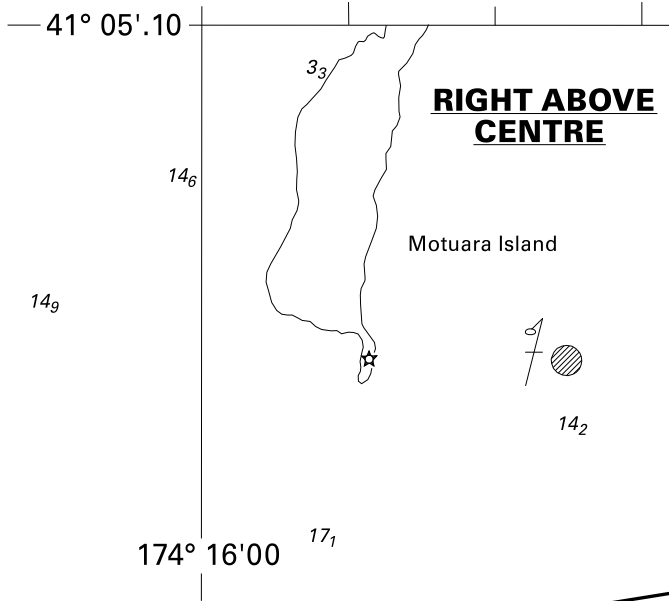
<i>Issued as a guide to chart correction.</i>		<i>Use in conjunction with the appropriate NZ Notice to Mariners.</i>	
<b>LAST CORRECTION</b>	<b>NZ NTM No.</b>	<b>CHART No.</b>	
<b>NZ 174/10</b>	<b>NZ 145/12</b>	<b>NZ 46</b>	



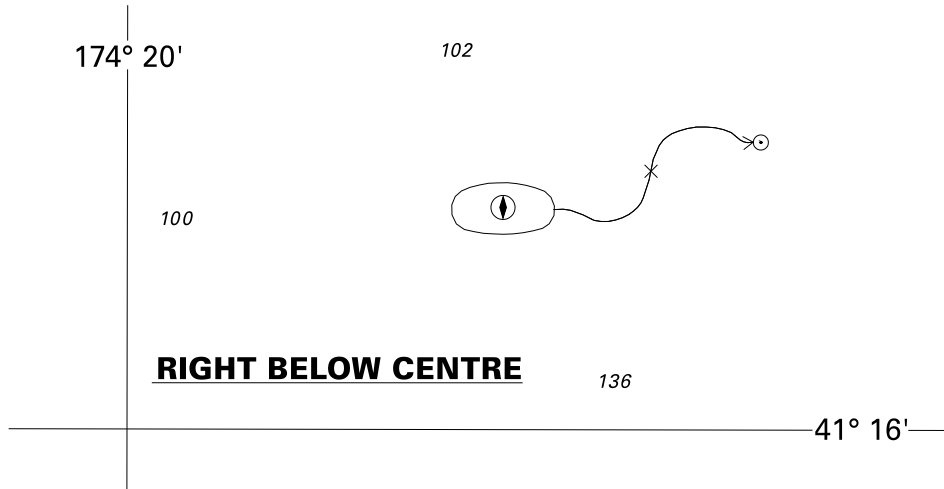
<i>Issued as a guide to chart correction.</i>		<i>Use in conjunction with the appropriate NZ Notice to Mariners.</i>	
<b>LAST CORRECTION</b>	<b>NZ NTM No.</b>	<b>CHART No.</b>	
<b>NZ 23/12</b>	<b>NZ 145/12</b>	<b>NZ 463</b>	



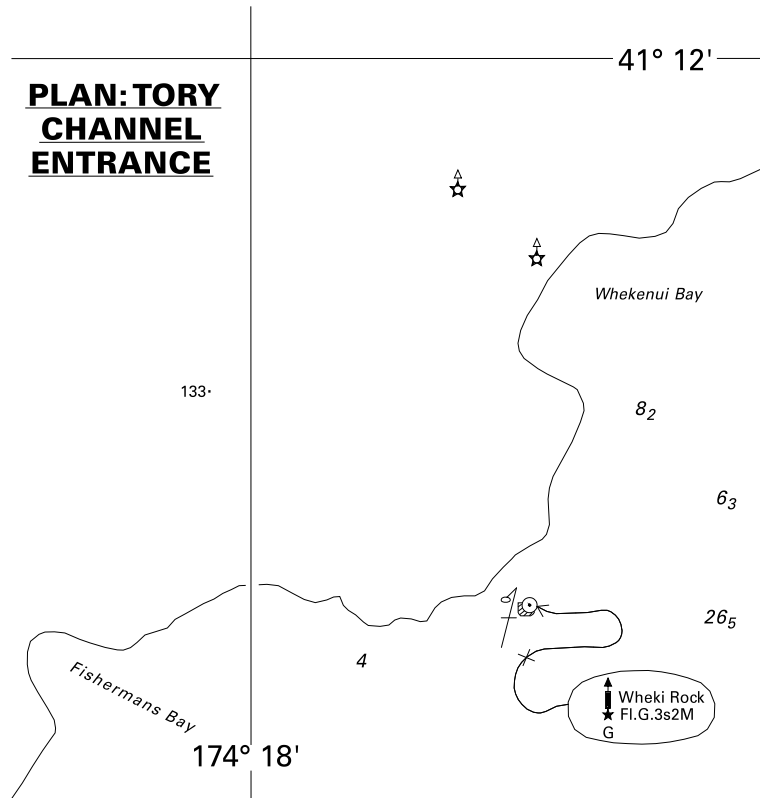
<i>Issued as a guide to chart correction.</i>		<i>Use in conjunction with the appropriate NZ Notice to Mariners.</i>	
<b>LAST CORRECTION</b>	<b>NZ NTM No.</b>	<b>CHART No.</b>	
<b>NZ 80/12</b>	<b>NZ 145/12</b>	<b>NZ 615</b>	



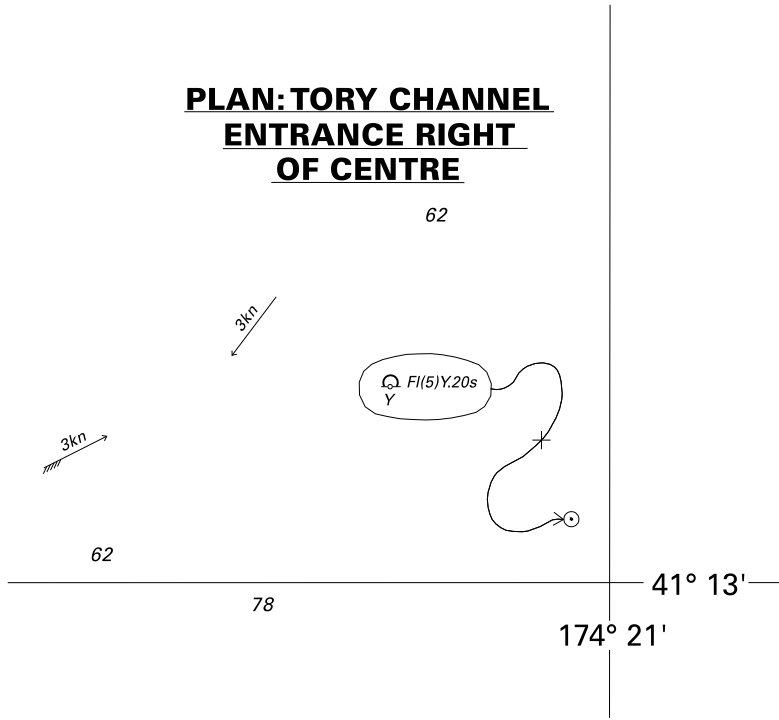
<i>Issued as a guide to chart correction.</i>		<i>Use in conjunction with the appropriate NZ Notice to Mariners.</i>	
<b>LAST CORRECTION</b>	<b>NZ NTM No.</b>	<b>CHART No.</b>	
<b>NZ 238/11</b>	<b>NZ 145/12</b>	<b>NZ 6153</b>	



<i>Issued as a guide to chart correction.</i>		<i>Use in conjunction with the appropriate NZ Notice to Mariners.</i>
<b>LAST CORRECTION</b>	<b>NZ NTM No.</b>	<b>CHART No.</b>
<b>NZ 238/11</b>	<b>NZ 145/12</b>	<b>NZ 6153</b>



<i>Issued as a guide to chart correction.</i>		<i>Use in conjunction with the appropriate NZ Notice to Mariners.</i>
<b>LAST CORRECTION</b>	<b>NZ NTM No.</b>	<b>CHART No.</b>
<b>NE Mar 03</b>	<b>NZ 145/12</b>	<b>NZ 6154</b>



<i>Issued as a guide to chart correction.</i>		<i>Use in conjunction with the appropriate NZ Notice to Mariners.</i>	
<b>LAST CORRECTION</b>	<b>NZ NTM No.</b>	<b>CHART No.</b>	
<b>NE Mar 11</b>	<b>NZ 145/12</b>	<b>NZ 6154</b>	



To accompany New Zealand Notice to Mariners No. 145/12

Chart No. NZ 46

QUEEN CHARLOTTE SOUND / TOTARANUI  
PILOT BOARDING STATIONS  
Vessels arriving at the Northern Entrance to Queen Charlotte Sound/Totaranui will be directed to Alpha pilot boarding station. Bravo pilot boarding station will only be used in heavy weather.

Chart No. NZ 463

QUEEN CHARLOTTE SOUND (TOTARANUI)  
PILOT BOARDING STATIONS  
Vessels arriving at the Northern Entrance to Queen Charlotte Sound will be directed to Alpha pilot boarding station. Bravo pilot boarding station will only be used in heavy weather.

Chart No. NZ 615

QUEEN CHARLOTTE SOUND  
PILOT BOARDING STATIONS  
Vessels arriving at the Northern Entrance to Queen Charlotte Sound (Totaranui) will be directed to Alpha pilot boarding station. Bravo pilot boarding station will only be used in heavy weather.