

**NZ 214/12 NEW ZEALAND – South Island – East Coast – Godley Head – Light.**

*Former notice – NZ 208(P)/12 is cancelled.*

**Chart NZ 25 (INT 648) [NE Jun 12]**

Delete ★LFI(3)17M 43° 35'.25S., 172° 48'.49E.

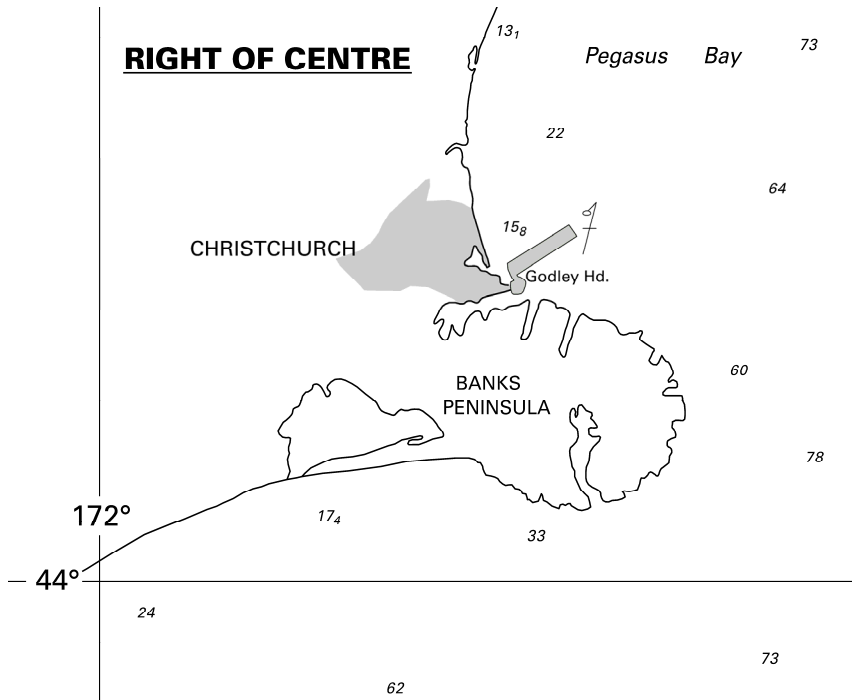
**Chart NZ 14600 (INT 600) [157/12]**

Delete ★ 43° 35'.25S., 172° 48'.49E.

**Chart NZ 14601 (INT 601) [249/08]**

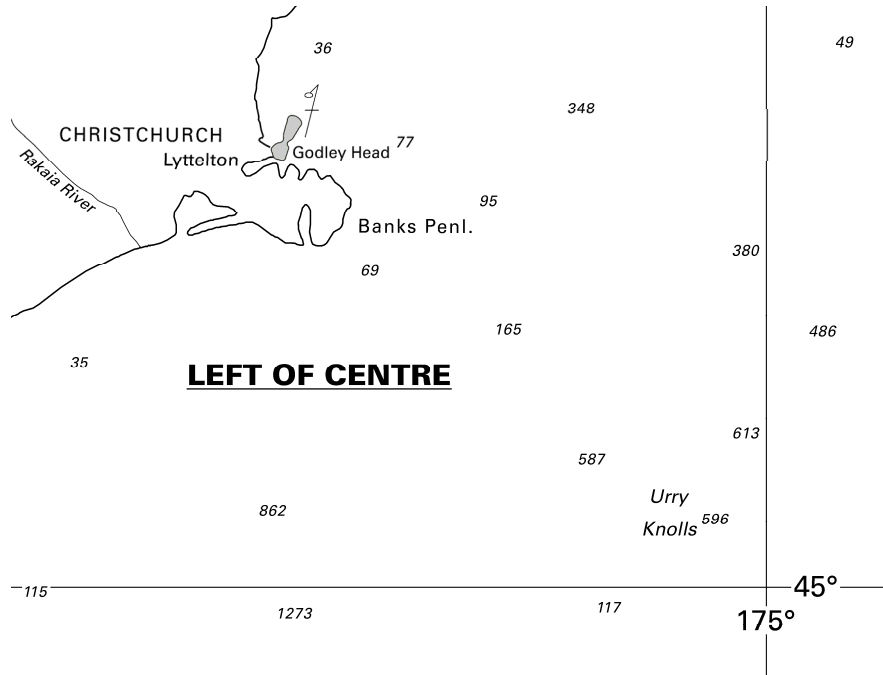
Delete ★ 43° 35'.25S., 172° 48'.49E.

Lyttelton Port of Christchurch  
 NI 254/2012

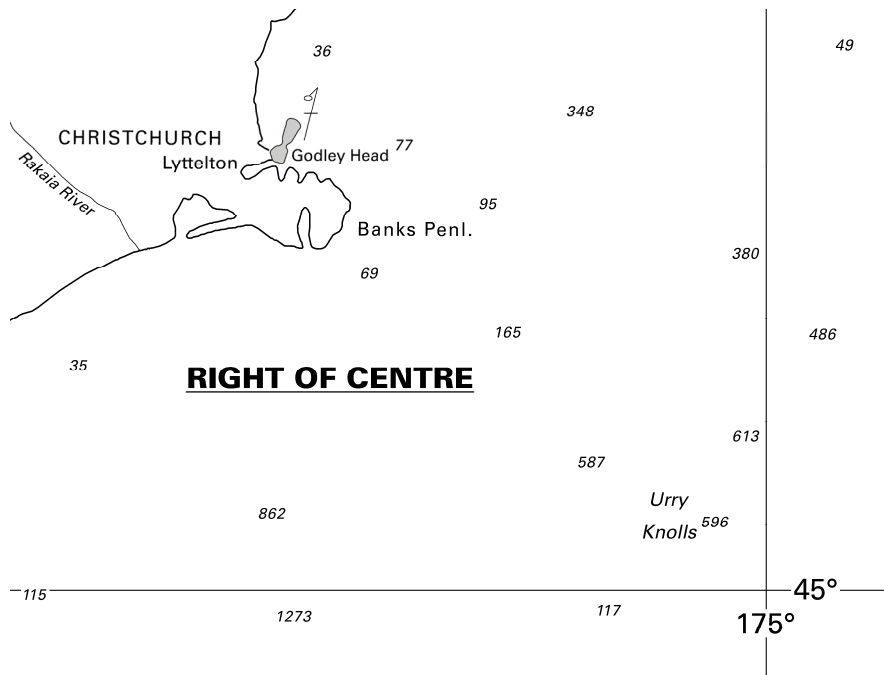


<i>Issued as a guide to chart correction.</i>		<i>Use in conjunction with the appropriate NZ Notice to Mariners.</i>	
<b>LAST CORRECTION</b>	<b>NZ NTM No.</b>	<b>CHART No.</b>	
<b>NE Jun 12</b>	<b>NZ 214/12</b>	<b>NZ 25 (INT 648)</b>	

Continued



<i>Issued as a guide to chart correction.</i>		<i>Use in conjunction with the appropriate NZ Notice to Mariners.</i>	
<b>LAST CORRECTION</b>	<b>NZ NTM No.</b>	<b>CHART No.</b>	
<b>NZ 157/12</b>	<b>NZ 214/12</b>	<b>NZ 14600 (INT 600)</b>	



<i>Issued as a guide to chart correction.</i>		<i>Use in conjunction with the appropriate NZ Notice to Mariners.</i>	
<b>LAST CORRECTION</b>	<b>NZ NTM No.</b>	<b>CHART No.</b>	
<b>NZ 249/08</b>	<b>NZ 214/12</b>	<b>NZ 14601 (INT 601)</b>	