

**NZ 50/13 NEW ZEALAND – South Island – North Coast – Entrance to Tory Channel – Buoy.**

*Former notice – NZ 185(P)/12 is cancelled.*

**Chart NZ 46 [145/12]**

Move	⊖ Fl(5)Y.20s, from:	41° 12'.95S.,	174° 20'.96E.
	Y		
	to:	41° 12'.13S.,	174° 20'.73E.

**Chart NZ 48 [73/12]**

Insert	⊖ Fl(5)Y.20s	41° 12'.13S.,	174° 20'.73E.
	Y		

**Chart NZ 463 [163/12]**

Insert	⊖ Fl(5)Y.20s	41° 12'.13S.,	174° 20'.73E.
	Y		

Delete	⊖ Fl(5)Y.20s	41° 12'.95S.,	174° 20'.96E.
	Y		

**Chart NZ 615 [163/12]**

Insert	⊖ Fl(5)Y.20s	41° 12'.13S.,	174° 20'.73E.
	Y		

Delete	⊖ Fl(5)Y.20s	41° 12'.95S.,	174° 20'.96E.
	Y		

**Chart NZ 6153 [163/12]**

Insert	⊖ Fl(5)Y.20s	41° 12'.13S.,	174° 20'.73E.
	Y		

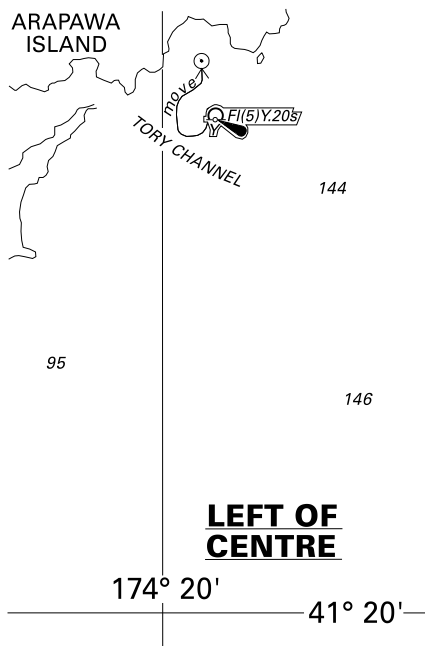
Delete	⊖ Fl(5)Y.20s	41° 12'.95S.,	174° 20'.96E.
	Y		

**Chart NZ 6154 [145/12]**

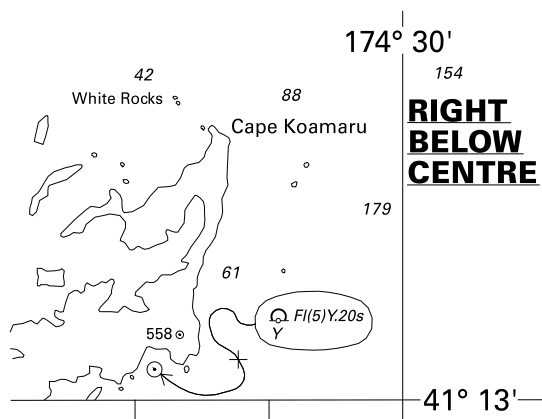
Insert	⊖ Fl(5)Y.20s	41° 12'.13S.,	174° 20'.73E.
	Y		

Delete	⊖ Fl(5)Y.20s	41° 12'.95S.,	174° 20'.96E.
	Y		

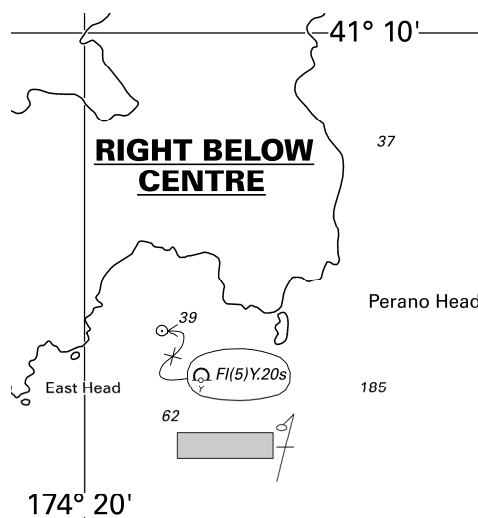
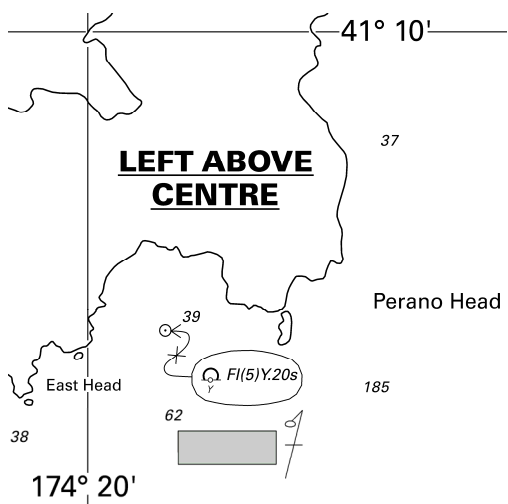
Marlborough District Council  
NI 25/2013



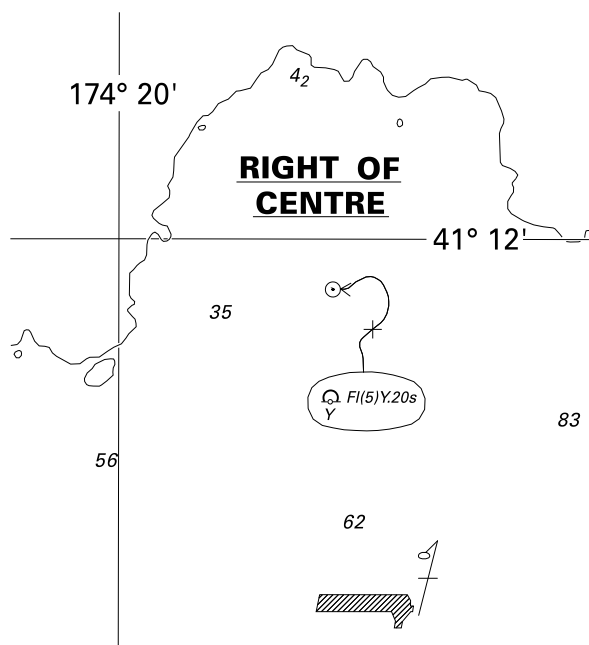
<i>Issued as a guide to chart correction.</i>		<i>Use in conjunction with the appropriate NZ Notice to Mariners.</i>
<b>LAST CORRECTION</b>	<b>NZ NTM No.</b>	<b>CHART No.</b>
<b>NZ 145/12</b>	<b>NZ 50/13</b>	<b>NZ 46</b>



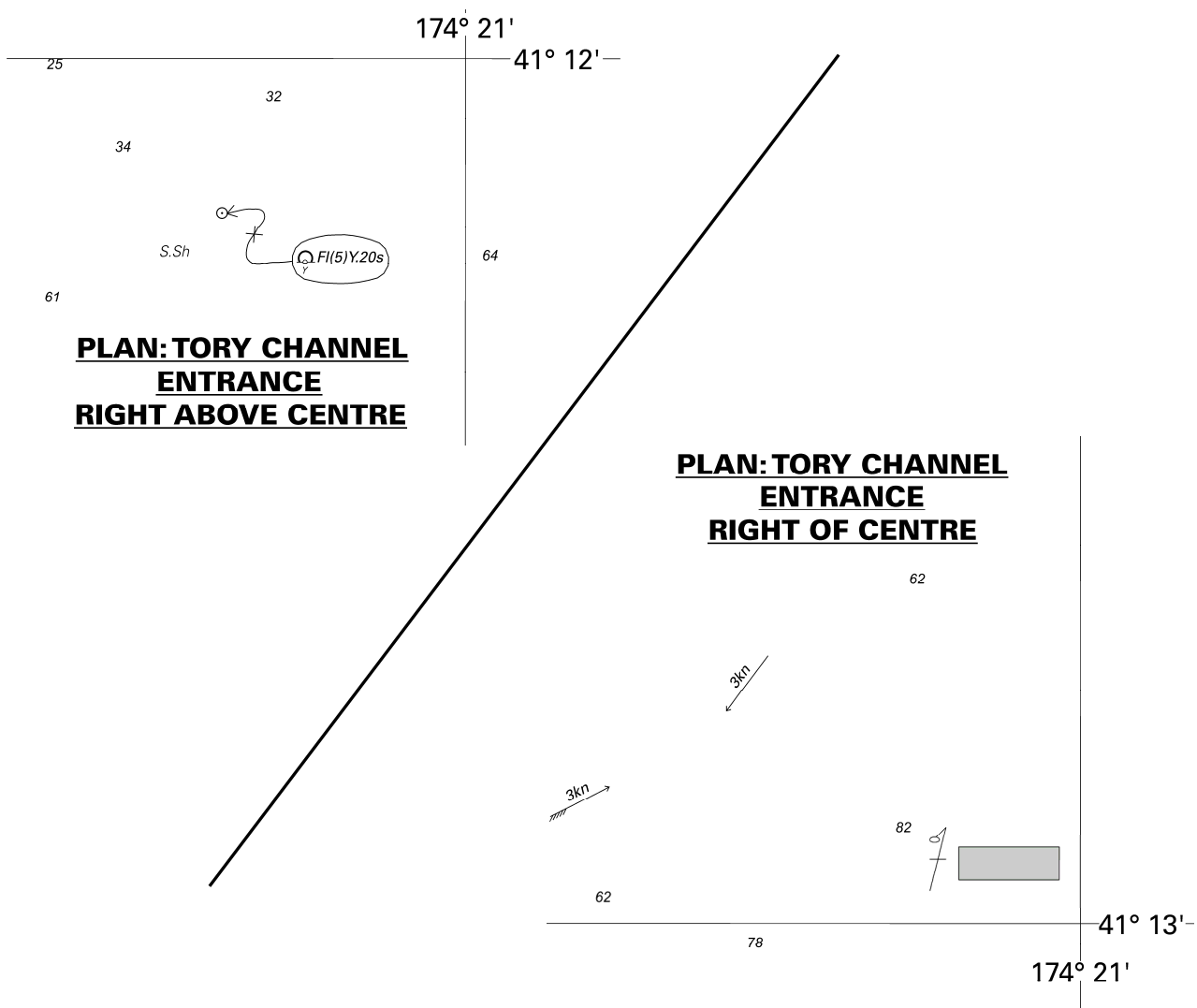
<i>Issued as a guide to chart correction.</i>		<i>Use in conjunction with the appropriate NZ Notice to Mariners.</i>
<b>LAST CORRECTION</b>	<b>NZ NTM No.</b>	<b>CHART No.</b>
<b>NZ 73/12</b>	<b>NZ 50/13</b>	<b>NZ 48</b>



<i>Issued as a guide to chart correction.</i>			<i>Issued as a guide to chart correction.</i>		
<i>Use in conjunction with the appropriate NZ Notice to Mariners.</i>			<i>Use in conjunction with the appropriate NZ Notice to Mariners.</i>		
LAST CORRECTION	NZ NTM No.	CHART No.	LAST CORRECTION	NZ NTM No.	CHART No.
NZ 163/12	NZ50/13	NZ 463	NZ 163/12	NZ50/13	NZ 615



<i>Issued as a guide to chart correction.</i>		<i>Use in conjunction with the appropriate NZ Notice to Mariners.</i>	
LAST CORRECTION	NZ NTM No.	CHART No.	
NZ 163/12	NZ 50/13	NZ 6153	



<i>Issued as a guide to chart correction.</i>		<i>Use in conjunction with the appropriate NZ Notice to Mariners.</i>	
<b>LAST CORRECTION</b>	<b>NZ NTM No.</b>	<b>CHART No.</b>	
<b>NZ 145/12</b>	<b>NZ 50/13</b>	<b>NZ 6154</b>	