

**NZ 62/13 NEW ZEALAND – North Island – West Coast – Taranaki – Kupe Platform – Racon beacon.**

**Chart NZ 23 (INT 640) [ 204/12 ]**

Insert radar beacon, Racon (Q), at platform 39° 51'.06S., 174° 07'.20E.

**Chart NZ 25 (INT 648) [ 214/12 ]**

Insert radar beacon, Racon (Q), at platform 39° 51'.06S., 174° 07'.20E.

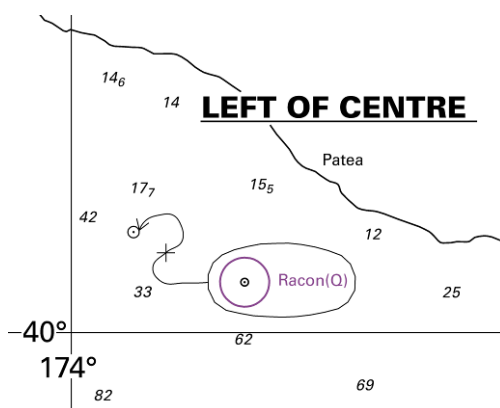
**Chart NZ 45 [ 073/12 ]**

Insert radar beacon, Racon (Q), at platform 39° 51'.06S., 174° 07'.20E.

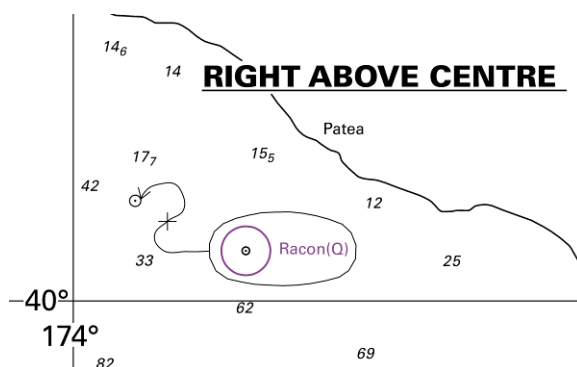
**Chart NZ 48 [050/13 ]**

Insert radar beacon, Racon (Q), at platform 39° 51'.06S., 174° 07'.20E.

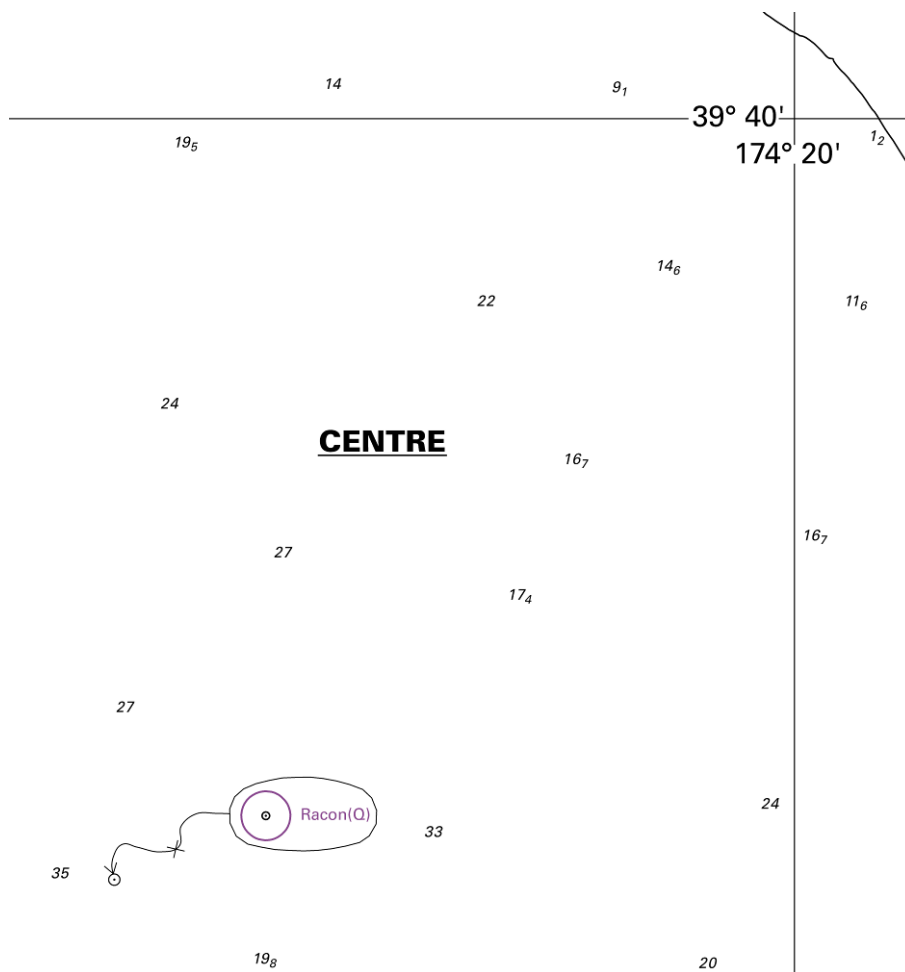
Maritime New Zealand  
NI 33/2013



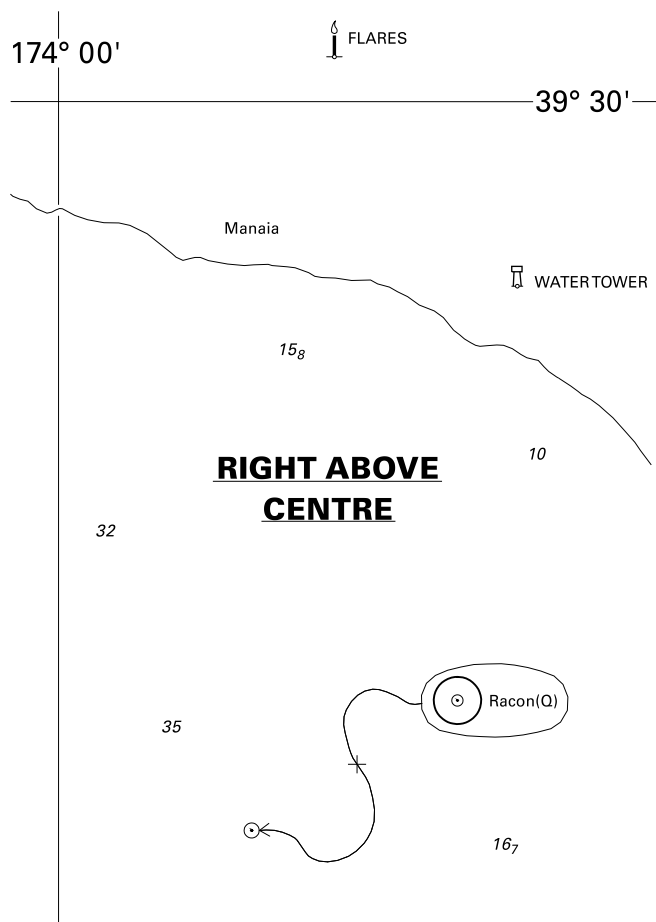
<i>Issued as a guide to chart correction.</i>		<i>Use in conjunction with the appropriate NZ Notice to Mariners.</i>	
<b>LAST CORRECTION</b>	<b>NZ NTM No.</b>	<b>CHART No.</b>	
<b>NZ 204/12</b>	<b>NZ 62/13</b>	<b>NZ 23 (INT 640)</b>	



<i>Issued as a guide to chart correction.</i>		<i>Use in conjunction with the appropriate NZ Notice to Mariners.</i>	
<b>LAST CORRECTION</b>	<b>NZ NTM No.</b>	<b>CHART No.</b>	
<b>NZ 214/12</b>	<b>NZ 62/13</b>	<b>NZ 25 (INT 648)</b>	



<i>Issued as a guide to chart correction.</i>		<i>Use in conjunction with the appropriate NZ Notice to Mariners.</i>	
<b>LAST CORRECTION</b>	<b>NZ NTM No.</b>	<b>CHART No.</b>	
<b>NZ 073/12</b>	<b>NZ 62/13</b>	<b>NZ 45</b>	



<i>Issued as a guide to chart correction.</i>		<i>Use in conjunction with the appropriate NZ Notice to Mariners.</i>	
<b>LAST CORRECTION</b>	<b>NZ NTM No.</b>	<b>CHART No.</b>	
<b>NZ 050/13</b>	<b>NZ 62/13</b>	<b>NZ 48</b>	