

**NZ 66/13 NEW ZEALAND – North Island – West Coast – Taranaki – Kupe Platform – RACON beacon.**

**Chart NZ 23 (INT 640) [ 62/13 ]**

Amend radar beacon, Racon (Q), to Racon (U) 39° 51'.06S., 174° 07'.20E.

**Chart NZ 25 (INT 648) [62/13 ]**

Amend radar beacon, Racon (Q), to Racon (U) 39° 51'.06S., 174° 07'.20E.

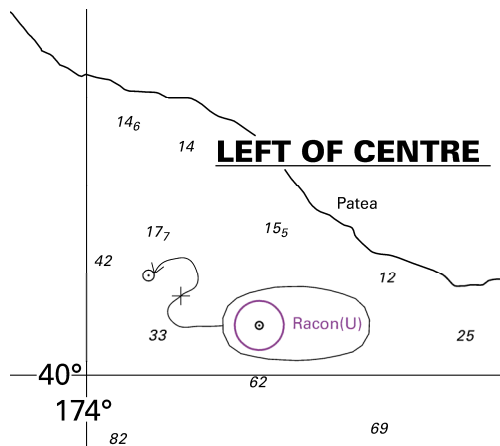
**Chart NZ 45 [ 62/13 ]**

Amend radar beacon, Racon (Q), to Racon (U) 39° 51'.06S., 174° 07'.20E.

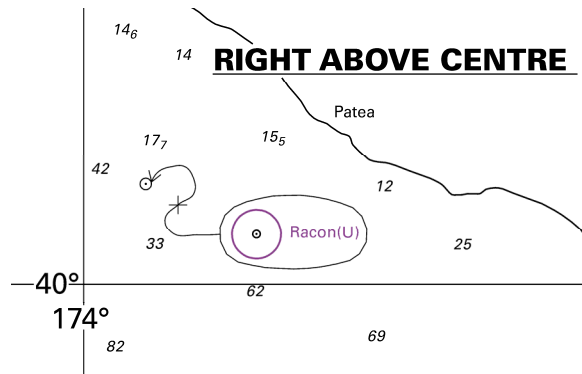
**Chart NZ 48 [62/13 ]**

Amend radar beacon, Racon (Q), to Racon (U) 39° 51'.06S., 174° 07'.20E.

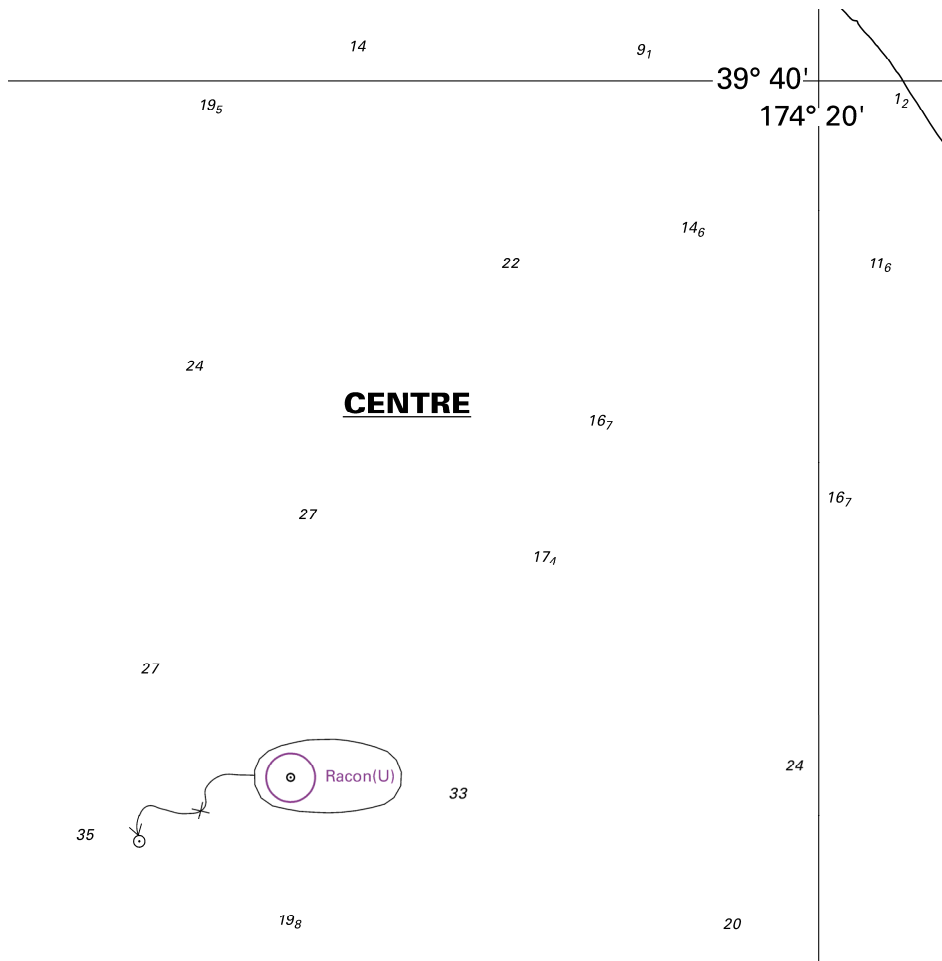
Maritime New Zealand  
NI 57/2013



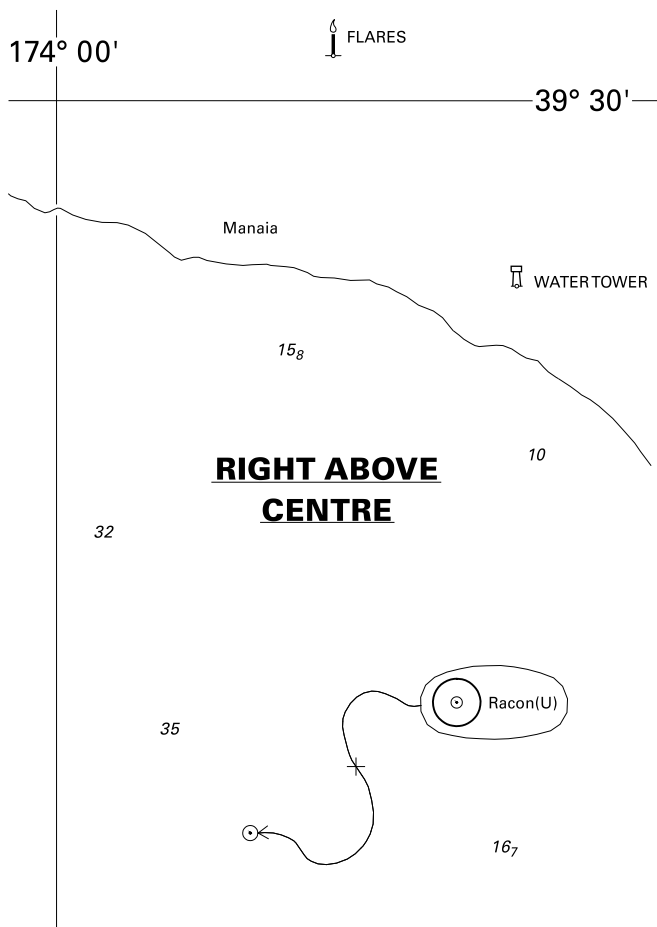
<i>Issued as a guide to chart correction.</i>		<i>Use in conjunction with the appropriate NZ Notice to Mariners.</i>	
LAST CORRECTION	NZ NTM No.	CHART No.	
<b>NZ 62/13</b>	<b>NZ 66/13</b>	<b>NZ 23 (INT 640)</b>	



<i>Issued as a guide to chart correction.</i>		<i>Use in conjunction with the appropriate NZ Notice to Mariners.</i>
<b>LAST CORRECTION</b>	<b>NZ NTM No.</b>	<b>CHART No.</b>
<b>NZ 62/13</b>	<b>NZ 66/13</b>	<b>NZ 25 (INT 648)</b>



<i>Issued as a guide to chart correction.</i>		<i>Use in conjunction with the appropriate NZ Notice to Mariners.</i>
<b>LAST CORRECTION</b>	<b>NZ NTM No.</b>	<b>CHART No.</b>
<b>NZ 62/13</b>	<b>NZ 66/13</b>	<b>NZ 45</b>



<i>Issued as a guide to chart correction.</i>		<i>Use in conjunction with the appropriate NZ Notice to Mariners.</i>
<b>LAST CORRECTION</b>	<b>NZ NTM No.</b>	<b>CHART No.</b>
<b>NZ 62/13</b>	<b>NZ 66/13</b>	<b>NZ 48</b>