

NZ 191/14 NEW ZEALAND – South Island – North Coast – Entrance to Tory Channel – Buoy.

Former notice – NZ 144(P)/14 is cancelled.

Chart NZ 463 [59/14]

Move  *Fl(5)Y.20s* from: 41° 12'.13S., 174° 20'.73E.
Y
to: 41° 12'.19S., 174° 20'.58E.

Chart NZ 615 [252/13]


Move  *Fl(5)Y.20s* from: 41° 12'.13S., 174° 20'.73E.
Y
to: 41° 12'.19S., 174° 20'.58E.

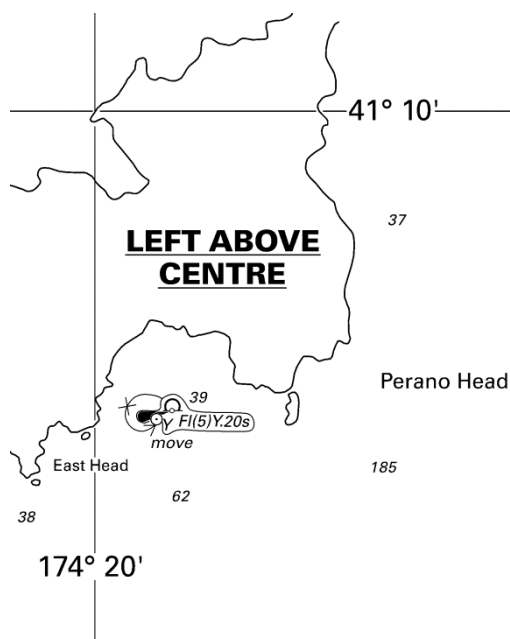
Chart NZ 6153 [190/14]

Move  *Fl(5)Y.20s* from: 41° 12'.13S., 174° 20'.73E.
Y
to: 41° 12'.19S., 174° 20'.58E.

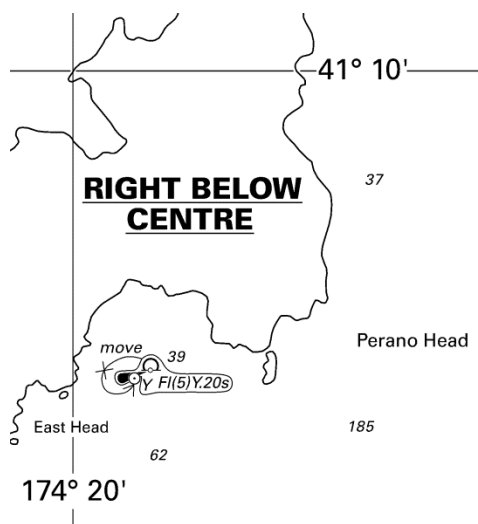
Chart NZ 6154 (plan, Tory Channel Entrance) [65/14]

Move  *Fl(5)Y.20s* from: 41° 12'.13S., 174° 20'.73E.
Y
to: 41° 12'.19S., 174° 20'.58E.

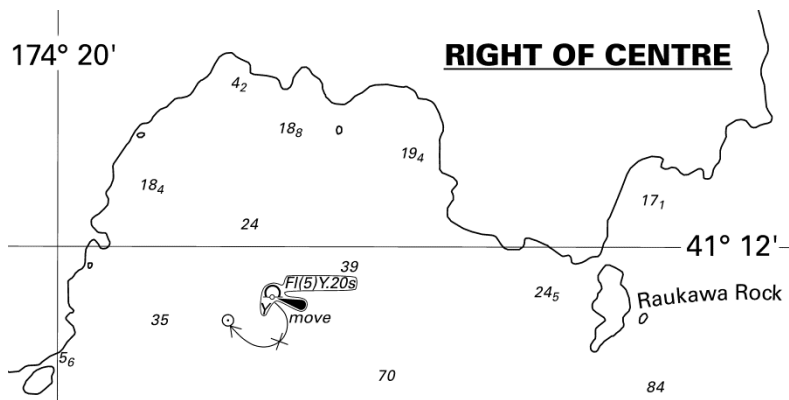
Marlborough District Council
NI 206/2014



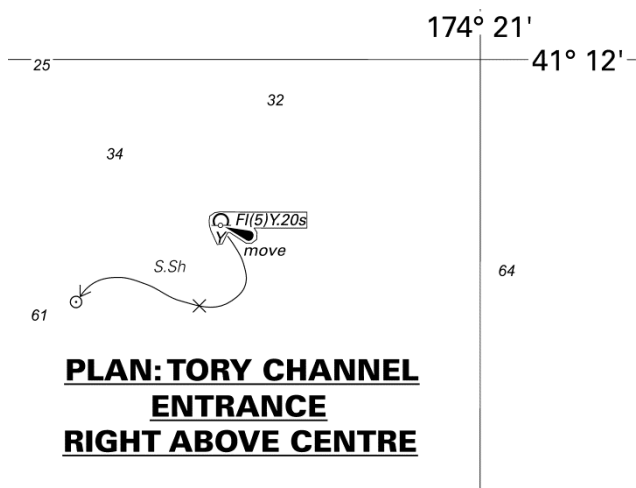
<i>Issued as a guide to chart correction.</i>		<i>Use in conjunction with the appropriate NZ Notice to Mariners.</i>
LAST CORRECTION	NZ NTM No.	CHART No.
NZ 59/14	NZ 191/14	NZ 463



<i>Issued as a guide to chart correction.</i>		<i>Use in conjunction with the appropriate NZ Notice to Mariners.</i>
LAST CORRECTION	NZ NTM No.	CHART No.
NZ 252/13	NZ 191/14	NZ 615



<i>Issued as a guide to chart correction.</i>		<i>Use in conjunction with the appropriate NZ Notice to Mariners.</i>
LAST CORRECTION	NZ NTM No.	CHART No.
NZ 190/14	NZ 191/14	NZ 6153



<i>Issued as a guide to chart correction.</i>		<i>Use in conjunction with the appropriate NZ Notice to Mariners.</i>
LAST CORRECTION	NZ NTM No.	CHART No.
NZ 65/14	NZ 191/14	NZ 6154