

NZ 260/14 SOUTH PACIFIC OCEAN – Niue – Alofi Bay – Light.

Former notice – NZ 180(T)/13 is cancelled.

Chart NZ 845 [NC Apr 09]

Delete ★ Fl.10s8M 19° 02'.78S., 169° 55'.09W.

Chart NZ 845 (plan, Alofi Anchorage) [NC Apr 09]

Delete ★ Fl.10s19m8M 19° 02'.811S., 169° 55'.099W.
W.Or

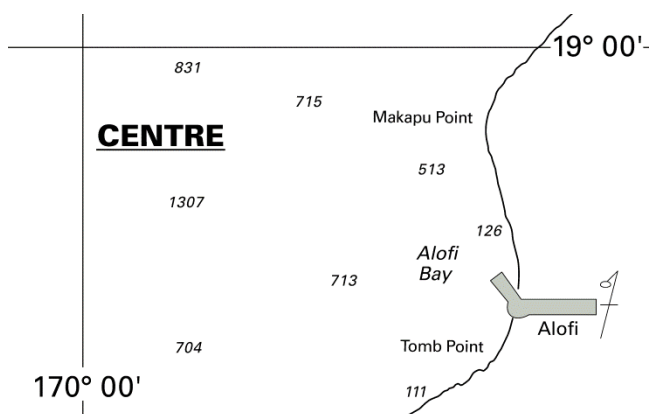
Chart NZ 14630 (INT 630) [120/02]

Delete ★ Fl.8M 19° 02'.8S., 169° 55'.1W.

Chart NZ 14631 (INT 631) [37/13]

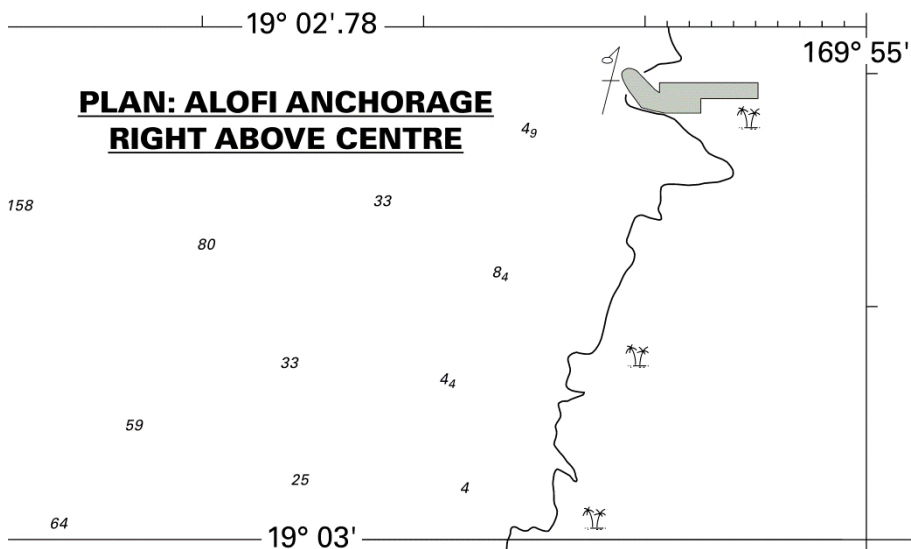
Delete ★ Fl.8M 19° 02'.7S., 169° 55'.2W.

Maritime New Zealand
BA Light List (Volume K): 4657
NI 294/2014

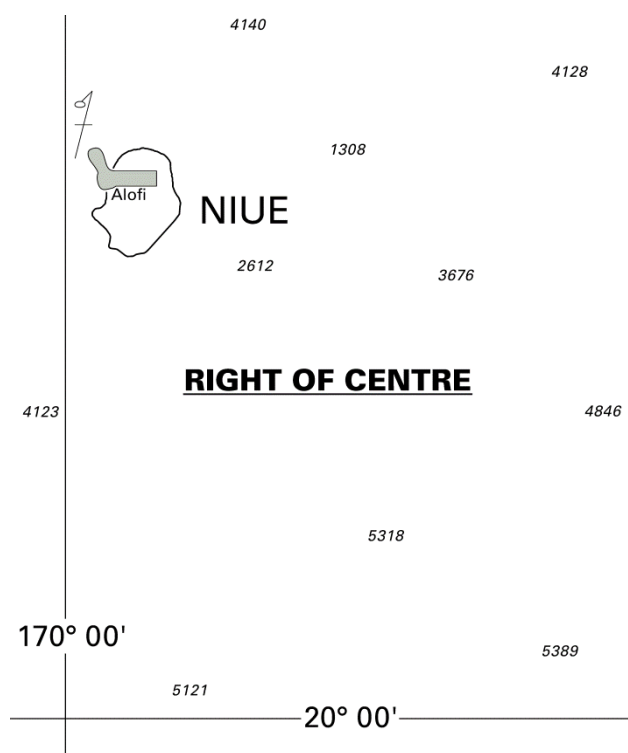
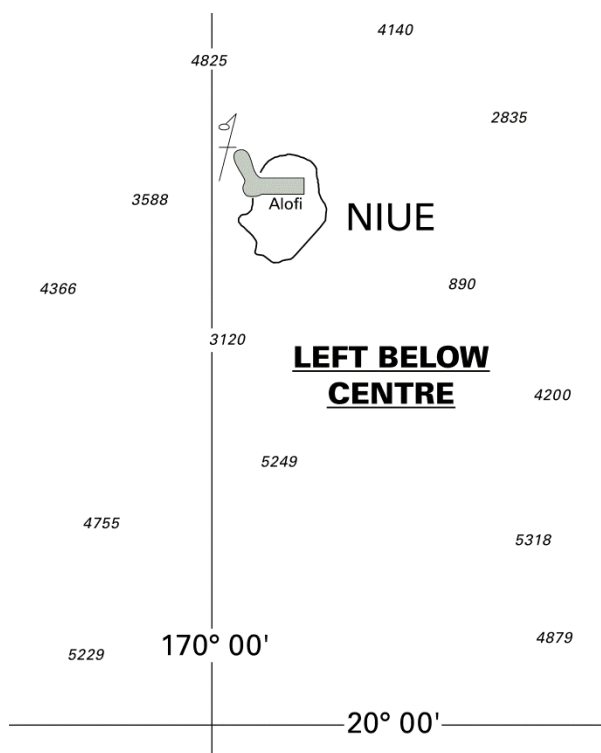


<i>Issued as a guide to chart correction.</i>		<i>Use in conjunction with the appropriate NZ Notice to Mariners.</i>	
LAST CORRECTION	NZ NTM No.	CHART No.	
NC April 09	NZ 260/14	NZ 845	

Continued



<i>Issued as a guide to chart correction.</i>		<i>Use in conjunction with the appropriate NZ Notice to Mariners.</i>	
LAST CORRECTION	NZ NTM No.	CHART No.	
NC April 09	NZ 260/14	NZ 845	



<i>Issued as a guide to chart correction.</i>			<i>Issued as a guide to chart correction.</i>		
<i>Use in conjunction with the appropriate NZ Notice to Mariners.</i>			<i>Use in conjunction with the appropriate NZ Notice to Mariners.</i>		
LAST CORRECTION	NZ NTM No.	CHART No.	LAST CORRECTION	NZ NTM No.	CHART No.
NZ 120/02	NZ 260/14	NZ 14630 (INT 630)	NZ 37/13	NZ 260/14	NZ 14631 (INT 631)