

**NZ 44/15 NEW ZEALAND – North Island – East Coast – Mercury Bay – Cooks Bluff to Te Karaka Island  
– Depths, Rocks, Sources, Tidal Levels.**

*Former notice* – NZ 244(P)/14 is cancelled.

**Chart NZ 5315 [ 259/14 ]**

Insert the accompanying block showing changes to depths and rocks  
centred on: 36° 49'.79S., 175° 47'.41E.

Replace the existing Source Data Diagram with the accompanying block below chart title

Replace the existing Tidal Levels Table with the accompanying block right of chart title

New Zealand Hydrographic Authority  
NI 289/2014

NZ 5315

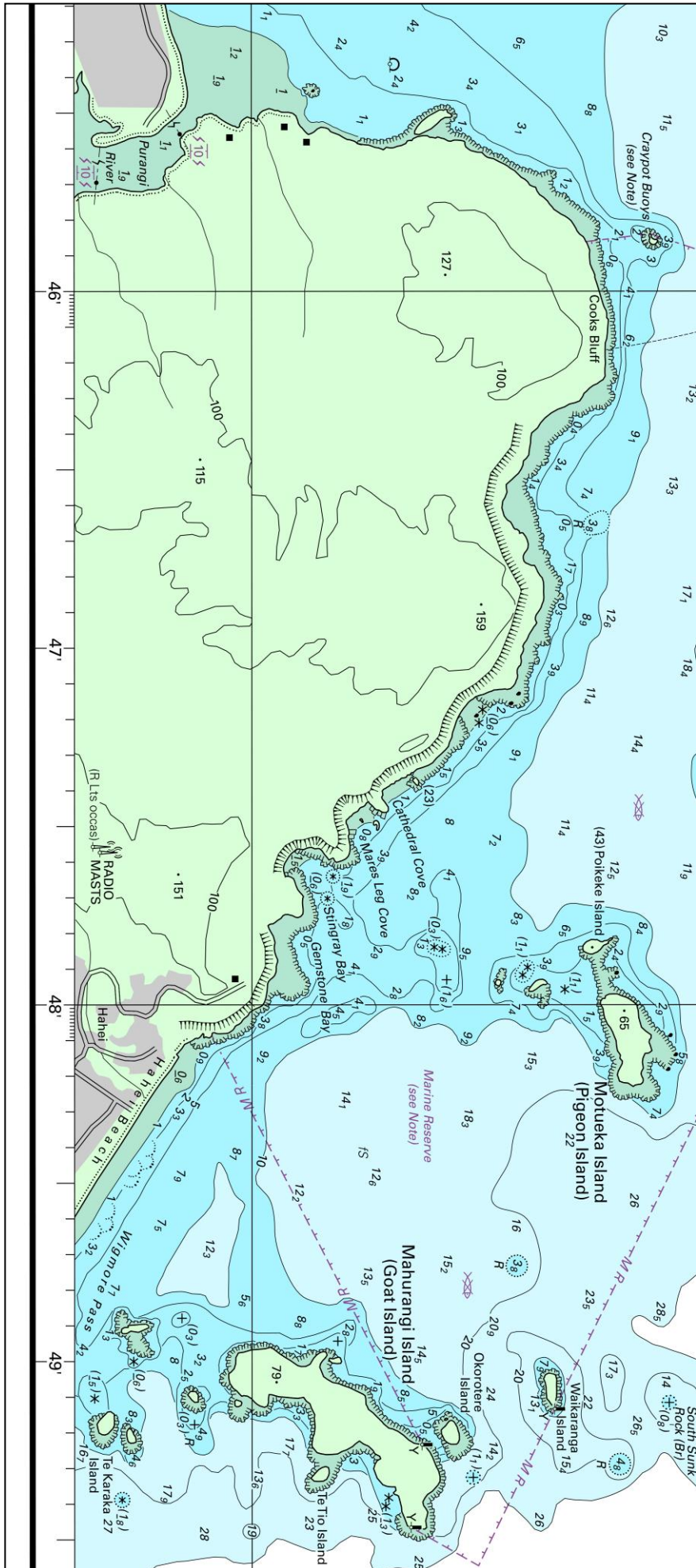


Image size (mm)  
115.9 x 261.1

NZ5315

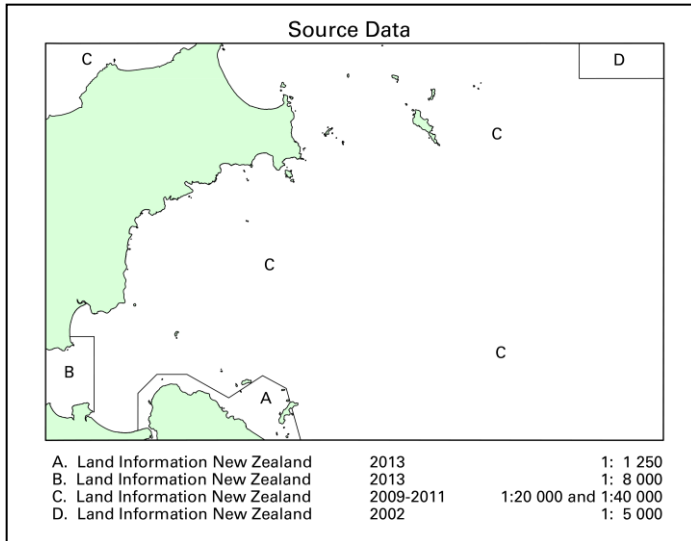


Image size (mm) 91.8 x 71.2

NZ5315

<b>Tidal Levels referred to Datum of Soundings</b>							
Place	Lat S	Long E	Heights in metres above Datum				Datum and Remarks
			MHWS	MHWN	MLWN	MLWS	
Whitianga	36°50'	175°42'	2.1	1.8	0.6	0.3	2.832 metres below LINZ mark code EEEY.

Image size (mm) 150.4 x 33.6