



CSD Plan - DP 539808

Survey Number DP 539808
Surveyor Reference 18-691 Ballycroy Trust
Surveyor Brian Patrick Curtis
Survey Firm Geoworks Limited
Surveyor Declaration I Brian Patrick Curtis, being a licensed cadastral surveyor, certify that:
(a) this dataset provided by me and its related survey are accurate, correct and in accordance with the Cadastral Survey Act 2002 and the Rules for Cadastral Survey 2010, and
(b) the survey was undertaken by me or under my personal direction.
Declared on 16 Sep 2020 04:49 PM

Survey Details

Dataset Description Lots 1 & 2 Being a Subdivision of Part Sections 35 & 36 Rangitikei District
Purpose LT Subdivision
Status Deposited
Land District Wellington
Meridional Circuit Wanganui 2000

Type	Survey
Survey Class	Class B
Vertical Datum	None

Survey Dates

Surveyed Date	25/10/2019	Certified Date	16/09/2020
Submitted Date	16/09/2020 16:49:06	Survey Approval Date	17/09/2020
Deposit Date	18/09/2020		

Referenced Surveys

Survey Number	Land District	Bearing Correction
A 2791	Wellington	0°00'00"
DP 31570	Wellington	0°01'00"
SO 12400	Wellington	0°00'00"
SO 25673	Wellington	0°00'00"
DP 3376	Wellington	0°00'00"
SO 19502	Wellington	0°00'00"
SO 30746	Wellington	0°00'00"
DP 432016	Wellington	0°00'00"
DP 309455	Wellington	0°00'00"
SO 375200	Wellington	0°00'00"

Territorial Authorities

Rangitikei District

Comprised In

RT WN337/177 Ltd

Created Parcels

Parcels	Parcel Intent	Area	RT Reference
Lot 1 Deposited Plan 539808	Fee Simple Title	1.4665 Ha	903441
Lot 2 Deposited Plan 539808	Fee Simple Title	18.7380 Ha	903442



CSD Plan - DP 539808

Created Parcels

Parcels	Parcel Intent	Area	RT Reference
Part Section 36 Rangitikei Agricultural District	Residue Parcel		
Total Area		<hr/> 20.2045 Ha	

Mark and Vector

Survey Number DP 539808

Meridional Circuit Wanganui 2000

From	To	Code	Bearing	Adpt Surv	Bearing Correction	Distance	Adpt Surv	Class
IT V DP 31570	IP DP 31570	ob0	276°31'35" M			593.79 M		
IP DP 31570	IT 1 DP 539808	ob4	117°15'50" M			332.06 M		
IT 1 DP 539808	IT V DP 31570	ob8	73°59'00" M			306.68 M		
IT 1 DP 539808	IT 2 DP 539808	ob9	211°34'50" M			249.66 M		
IT 2 DP 539808	IT 3 DP 539808	ob63	333°18'40" M			287.36 M		
IT 3 DP 539808	IT 1 DP 539808	ob68	99°37'30" M			263.50 M		
IT 3 DP 539808	IP DP 31570	ob69	341°52'20" M			113.70 M		
IT 1 DP 539808	IT XX SO 19502	ob10	184°47'10" M			368.18 M		
IT XX SO 19502	IT IV DP 309455	ob57	58°57'30" M			285.21 M		
IT IV DP 309455	IT 1 DP 539808	ob60	315°49'00" M			306.53 M		
IT 2 DP 539808	IT XX SO 19502	ob64	147°02'10" M			183.80 M		
IT 1 DP 539808	LA 26	ob11	237°17'25" M			479.45 M		
LA 26	IT XX SO 19502	ob74	106°08'00" M			387.97 M		
IT V DP 31570	IR II DP 309455	ob1	194°55'15" M			81.24 M		
IR II DP 309455	IR III DP 309455	ob17	194°55'15" M			143.99 M		
IR III DP 309455	IT IV DP 309455	ob19	194°55'15" M			89.84 M		
IP DP 31570	IT XX SO 19502	ob5	153°00'00" M			582.50 M		
IT XX SO 19502	IT III DP 11292	ob58	226°41'40" M			400.38 M		
IT III DP 11292	IT V DP 31570	ob53	40°20'52" A	DP 432016		952.78 A	DP 432016	
IT III DP 11292	IT I DP 51995	ob54	242°28'40" M			3.00 M		
IT 1 DP 539808	IR II DP 309455	ob12	88°43'10" M			273.93 M		
IT 1 DP 539808	IR III DP 309455	ob13	119°19'30" M			271.57 M		
IT V DP 31570	BROTHERS	ob2	203°20'40" A	DP 309455		547.76 A	DP 309455	
BROTHERS	IT XX SO 19502	ob23	295°22'00" A	SO 25673		120.02 A	SO 25673	
IT IV DP 309455	BROTHERS	ob61	214°24'30" A	SO 375200		240.55 A	SO 375200	
IP DP 31570	IS I DP 3376	ob6	193°35'30" A	DP 3376		426.13 A	DP 3376	
IS I DP 3376	PEG (1) SO 19502	ob25	225°45'00" A	SO 19502		3.23 A	SO 19502	
PEG (1) SO 19502	PEG (2) SO 19502	ob26	105°38'20" A	SO 19502		271.30 A	SO 19502	
PEG (2) SO 19502	IT XX SO 19502	ob27	105°38'20" A	SO 19502		109.70 A	SO 19502	
IP DP 31570	PEG 1 DP 539808	ob7	204°57'00" M			11.21 M		
PEG 1 DP 539808	PEG 2 DP 539808	ob29	193°27'59" A	DP 3376		413.00 A	DP 3376	Class B
PEG 2 DP 539808	IS I DP 3376	ob31	162°24'00" A	DP 3376		2.51 A	DP 3376	
PEG (2) SO 19502	POST 3 DP 539808	ob28	12°31'00" A	SO 19502		5.51 A	SO 19502	
POST 3 DP 539808	PEG 2 DP 539808	ob32	285°30'30" A	SO 19502		270.75 A	SO 19502	Class B
IT V DP 31570	IR VI DP 31570	ob3	193°31'30" A	DP 31570	0°01'00"	82.56 A	DP 31570	

Mark and Vector

Survey Number DP 539808

Meridional Circuit Wanganui 2000

From	To	Code	Bearing	Adpt Surv	Bearing Correction	Distance	Adpt Surv	Class
IR VI DP 31570	IR (41) DP 31570	ob34	190°44'00"	A DP 31570	0°01'00"	75.90 A	DP 31570	
IR (41) DP 31570	PEG III A 2791	ob35	193°19'00"	A A 2791		255.20 A	A 2791	
PEG III A 2791	PEG II A 2791	ob36	194°13'30"	A A 2791		102.27 A	A 2791	
PEG II A 2791	PEG I A 2791	ob37	190°07'30"	A A 2791		80.57 A	A 2791	
PEG I A 2791	BROTHERS	ob38	312°30'00"	A A 2791		116.36 A	A 2791	
PEG 1 DP 539808	PEG 10 DP 539808	ob30	103°25'20"	A SO 30746		428.90 C		Class B
PEG 10 DP 539808	PEG 4 DP 539808	ob73	103°25'20"	A SO 30746		148.26 C		Class B
PEG 4 DP 539808	IR VI DP 31570	ob39	104°43'00"	A SO 30746		14.45 A	SO 30746	
BROTHERS	PEG (1) SO 12400	ob24	132°02'30"	A SO 12400		104.41 A	SO 12400	
PEG (1) SO 12400	PEG (2) SO 12400	ob41	14°38'00"	A SO 12400		269.91 A	SO 12400	
PEG (2) SO 12400	PEG (3) SO 12400	ob42	4°23'00"	A SO 12400		97.69 A	SO 12400	
PEG (3) SO 12400	PEG (4) SO 12400	ob43	10°06'00"	A SO 12400		67.65 A	SO 12400	
PEG (4) SO 12400	PEG (5) SO 12400	ob44	26°15'30"	A SO 12400		80.87 A	SO 12400	
PEG (5) SO 12400	PEG 4 DP 539808	ob45	265°25'00"	A SO 12400		17.10 A	SO 12400	
PEG 4 DP 539808	PEG 5 DP 539808	ob40	200°14'00"	A SO 12400		73.53 A	SO 12400	Class B
PEG 5 DP 539808	PEG 8 DP 539808	ob46	191°55'00"	A SO 12400		30.63 C		Class B
PEG 8 DP 539808	PEG 6 DP 539808	ob70	191°55'00"	A SO 12400		38.51 C		Class B
PEG 6 DP 539808	PEG 7 DP 539808	ob47	188°04'00"	A SO 12400		65.76 C		Class B
PEG 7 DP 539808	PEG A SO 12400	ob48	188°04'00"	C		29.79 C		
PEG A SO 12400	PEG (2) SO 12400	ob49	104°38'00"	A SO 12400		15.49 A	SO 12400	
POST 3 DP 539808	PEG 9 DP 539808	ob33	12°31'00"	A SO 19502		101.06 C		Class B
PEG 9 DP 539808	UNMK 1 DP 539808	ob72	12°31'00"	A SO 19502		14.09 C		Class B
UNMK 1 DP 539808	POST 12 DP 539808	ob50	109°28'00"	C		171.34 C		Class B
POST 12 DP 539808	PEG 7 DP 539808	ob51	62°47'20"	C		181.38 C		Class B
PEG 8 DP 539808	ABD 11 DP 539808	ob71	283°30'30"	C		138.24 C		Class B

Mark and Vector

Survey Number DP 539808

Meridional Circuit Wanganui 2000

From	To	Code	Bearing	Adpt Surv	Bearing Correction	Distance	Adpt Surv	Class
ABD 11 DP 539808	PEG 10 DP 539808	ob55	12°14'30"	C		103.42 C		Class B
IT 2 DP 539808	PEG 13 DP 539808	ob65	108°19'00"	M		19.31 M		
PEG 13 DP 539808	UNMK 1 DP 539808	ob56	109°28'00"	C		2.34 C		
IT 2 DP 539808	PEG 2 DP 539808	ob66	259°58'10"	M		269.44 M		
IT 2 DP 539808	PEG 9 DP 539808	ob67	139°43'00"	M		27.03 M		
IT XX SO 19502	POST 3 DP 539808	ob59	288°29'20"	M		110.13 M		
IR II DP 309455	PEG 4 DP 539808	ob18	278°48'00"	M		12.48 M		
IR III DP 309455	PEG 5 DP 539808	ob20	359°28'00"	M		72.06 M		
IR III DP 309455	PEG 8 DP 539808	ob21	350°35'00"	M		42.66 M		
IR III DP 309455	PEG 6 DP 539808	ob22	286°27'00"	M		15.56 M		
IT IV DP 309455	PEG 7 DP 539808	ob62	357°48'00"	M		26.13 M		
IT 1 DP 539808	ABD 11 DP 539808	ob14	121°35'00"	M		111.96 M		
IT 1 DP 539808	PEG 10 DP 539808	ob15	70°07'00"	M		124.74 M		
IT 1 DP 539808	POST 12 DP 539808	ob16	169°29'20"	M		281.37 M		
POST 12 DP 539808	DCDB	ob52	109°28'00"	C		5.35 C		Class B

Mark Name	Description
IP DP 31570	d0.4
IR II DP 309455	flush
IR III DP 309455	flush
IT 1 DP 539808	d0.4
IT 2 DP 539808	d0.5
IT 3 DP 539808	d0.4
IT I DP 51995	d0.3
IT III DP 11292	d0.15
IT IV DP 309455	d0.1
IT V DP 31570	d0.3

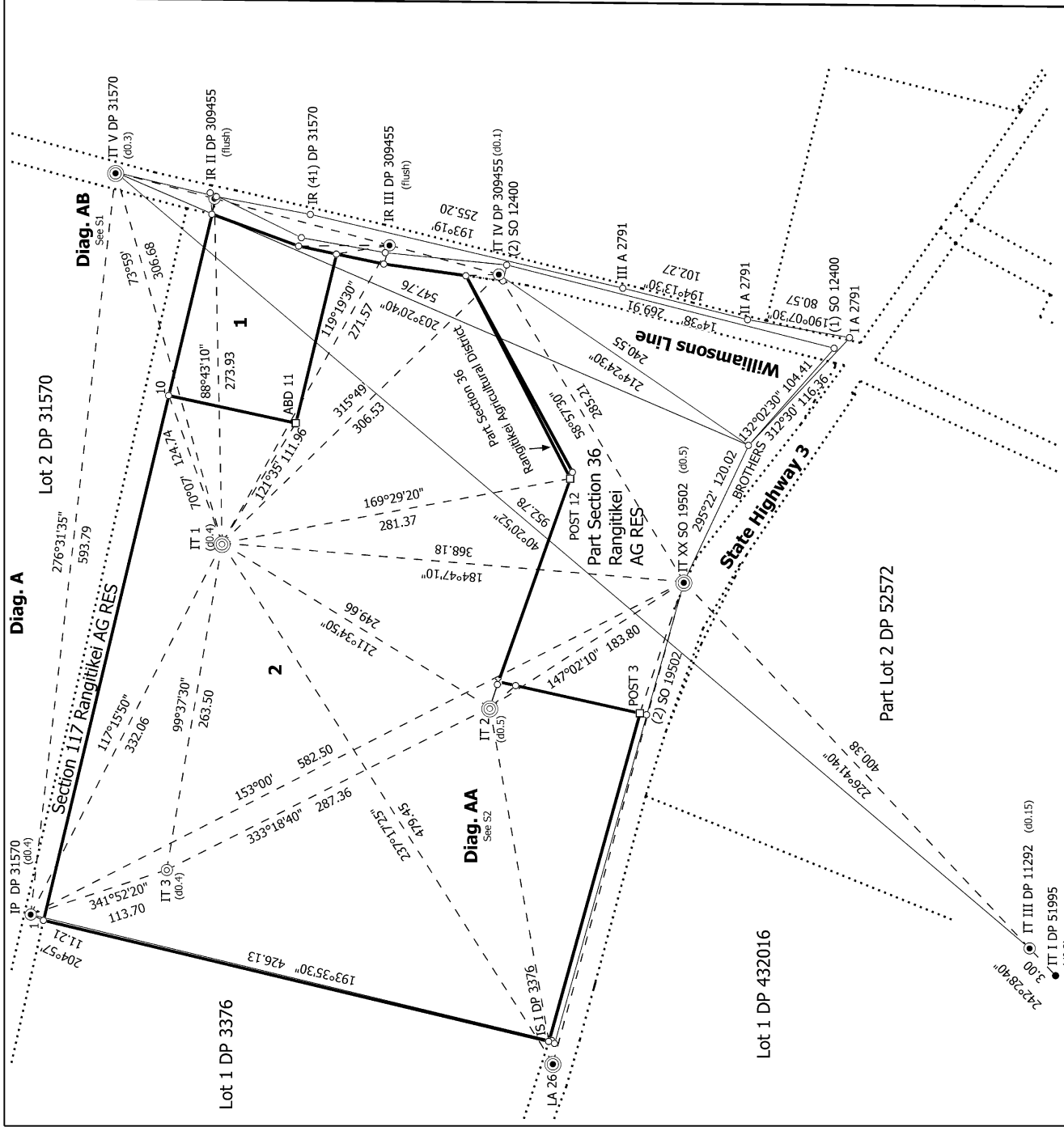
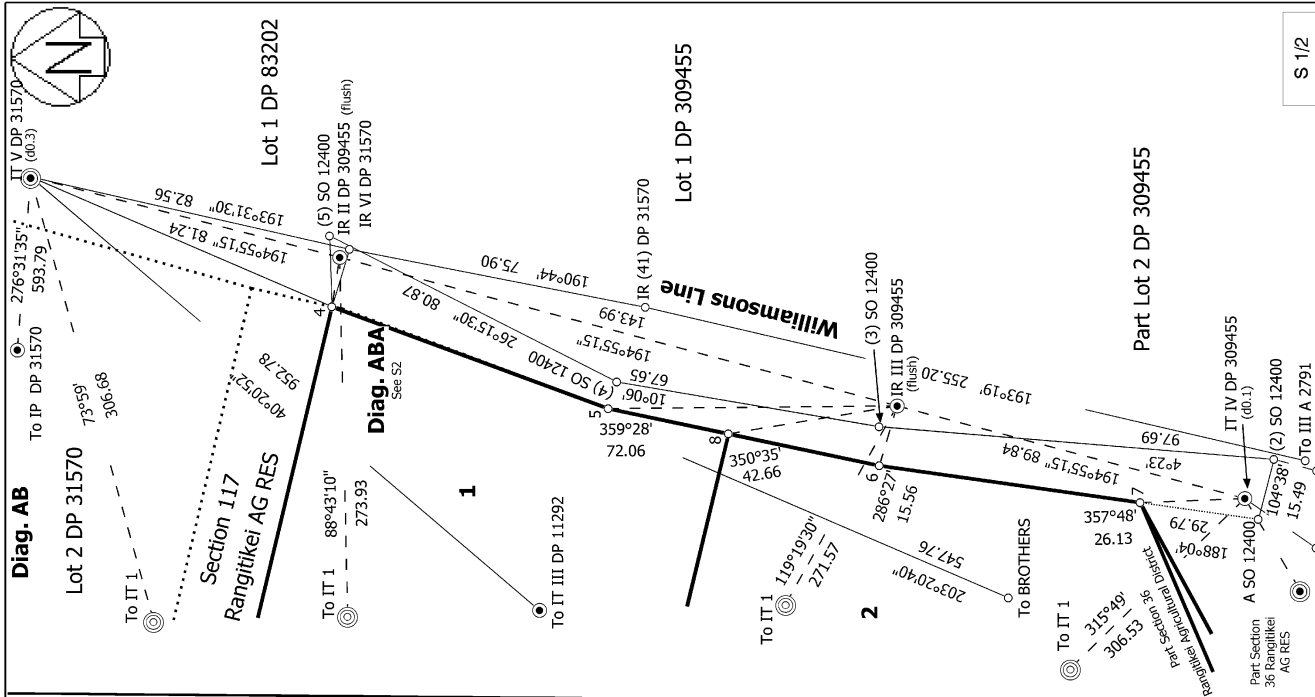


Mark and Vector

Survey Number DP 539808
Meridional Circuit Wanganui 2000

Mark Name	Description
IT XX SO 19502	d0.5

***** End of Report *****



S 1/2

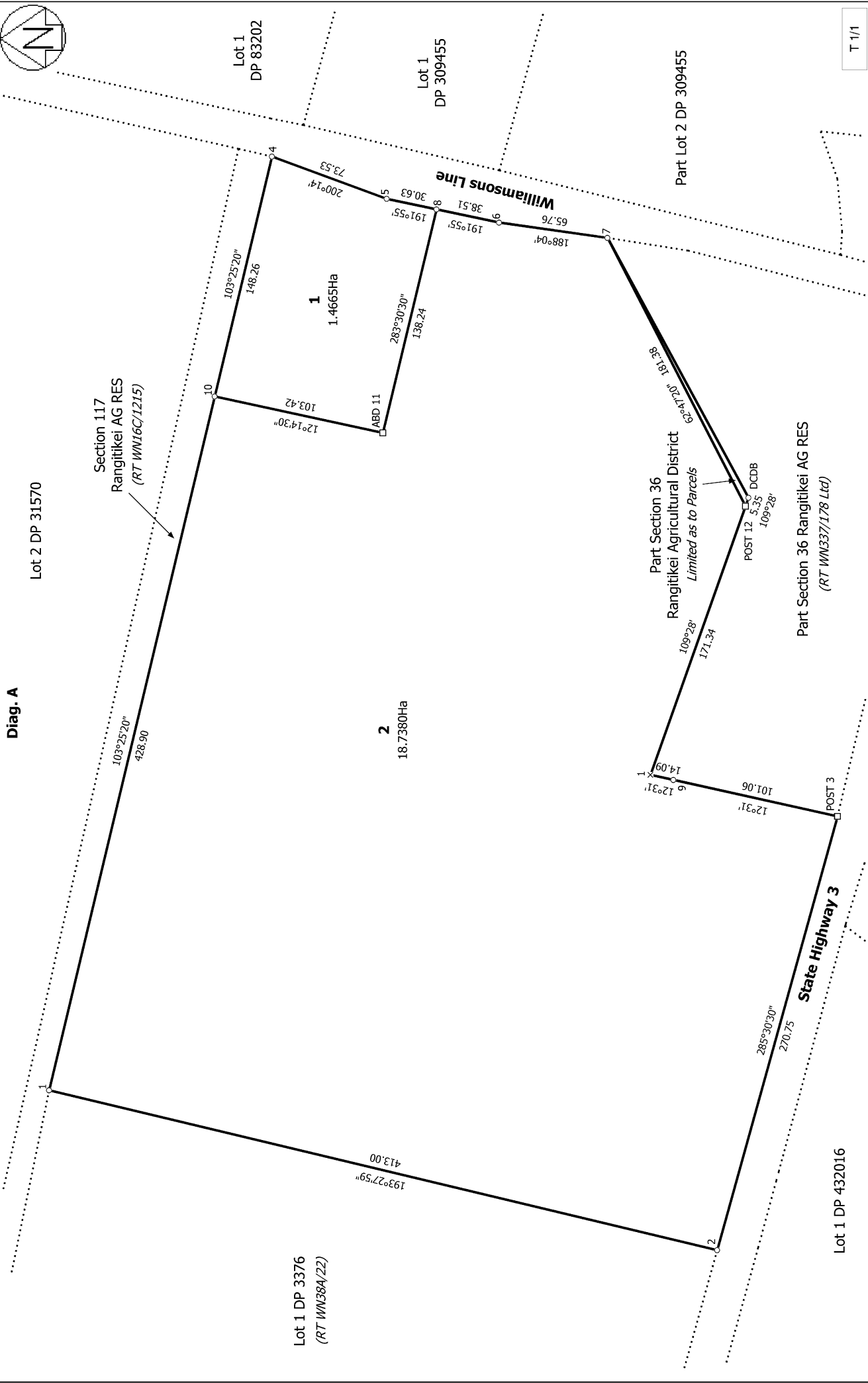
Surveyor: Brian Patrick Curtis
 Firm: Geoworks Limited
 Survey Date: 25/10/2019

CSD Plan
 DP 539808
 Deposited on: 18/09/2020

Land District: Wellington
 Lots 1 & 2 Being a Subdivision of Part Sections 35 & 36 Rangitikei District

Digitally Generated Plan
 Generated on: 03/12/2020 12:43pm Page 8 of 10

Diag. A



<p>Land District: Wellington</p> <p>Digitally Generated Plan</p> <p>Generated on: 03/12/2020 12:43pm Page 10 of 10</p>	<p>Lots 1 & 2 Being a Subdivision of Part Sections 35 & 36 Rangitikei District</p>	<p>Surveyor: Brian Patrick Curtis Firm: Geoworks Limited Survey Date: 25/10/2019</p>	<p>CSD Plan DP 539808</p> <p>Deposited on: 18/09/2020</p>
---	---	--	--