

# Release notes for surveyors

Changes for surveyors as part of Landonline release 3.23

## (.)\_Surveyors Declaration Missing after Plan is Submitted

Defect LOLCM-1981 (Internal and External)

### Description

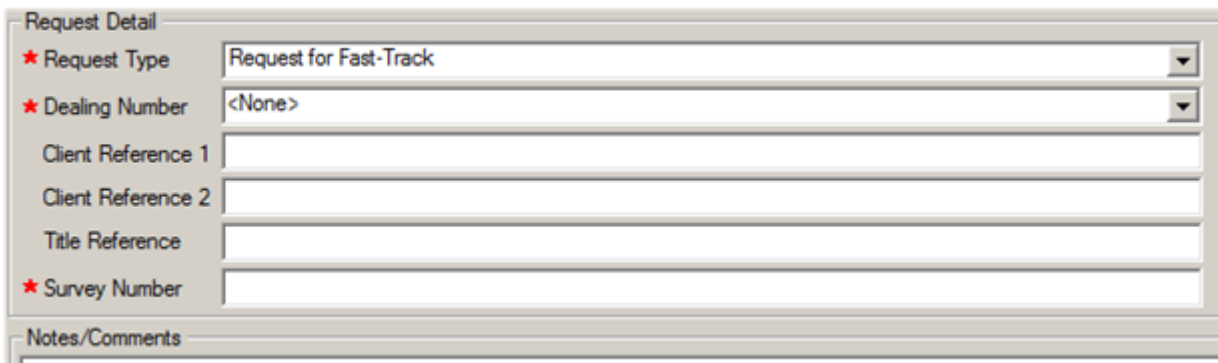
If a surveyor selects the 'Generate Plan' button on the Plan Generation tab, for a submitted unit plan (plans that have no spatial capture), the surveyors' declaration is being removed from the submitted plan.

### Action

#### Fixed

All plans that are submitted are in Read Mode only therefore the ability to go into Plan Generation has been removed.

For any plan that has a 'Status' of 'Submitted', and if a user tries to go into Plan Generation, the 'Generate Plan' button is now greyed out to prevent issues like this occurring



## (.)\_Appellation Formats for Units

Enhancement LOLCM-1988 (Internal and External)

### Description

The Cadastral Survey Rules 2021 will allow for unique parcel identifiers to also be a letter followed by a number. The current rules and Landonline only allow for a number which may be followed by a letter i.e. Principal Unit 1A and Accessory Unit 2.

## Action

Landonline has been updated to allow for these new parcel identifiers to be captured using the 'general' appellation format. The actual rule will be a 'number which may be followed by a letter; or a letter which must be followed by a number'

**Note:** To allow for surveyors to use a letter followed by a number the Surveyor-General has issued a dispensation pursuant to s47(5) Cadastral Survey Act 2002

[See Unit appellations in our Unit plans page \(//www.linz.govt.nz/kb/918#unitappellations\)](http://www.linz.govt.nz/kb/918#unitappellations)

### Appendix 1: Examples of Acceptable Formats

Parcel Type	Unique Identifier format	Correct Examples	Incorrect Examples
Principal Unit	A number or a number followed by a letter, or a letter followed by a number	<ul style="list-style-type: none"> <li>Principal Unit 1</li> <li>Principal Unit 99Z</li> <li>Principal Unit A2</li> </ul>	<ul style="list-style-type: none"> <li>Principal Unit A</li> <li>Principal Unit A1A</li> <li>Principal 2A1</li> </ul>
Accessory Unit	A number or a number followed by a letter, or a letter followed by a number	<ul style="list-style-type: none"> <li>Accessory Unit 1</li> <li>Accessory Unit 1A</li> <li>Accessory Unit A2</li> </ul>	<ul style="list-style-type: none"> <li>Accessory Unit A</li> <li>Accessory 2A1</li> </ul>
Future Development Unit	A number or a number followed by a letter, or a letter followed by a number	<ul style="list-style-type: none"> <li>Future Development Unit 1</li> <li>Future Development Unit 1A</li> <li>Future Development Unit A2</li> </ul>	<ul style="list-style-type: none"> <li>Future Development Unit A</li> <li>Future Development I 2A1</li> </ul>

## ()\_Landonline Crashes When Trying to Print Spatially from Survey Capture

Enhancement LOLCM-2098 (Internal and External)

### Description

Error 9005 occurs while executing file>print. This would cause Landonline to crash after clicking "okay" to the 9005 error. This would also happen while trying to print from parcel view when changing the scale

## Action

**Fixed**

The 9005 error no longer displays on printing in Workspace

The 9005 error no longer displays on printing in Desktop

## ()\_Unable to Save Fees Report as a PDF

LOLCM-2112 (Internal and External)

## Description

Both Desktop and workspace users are not able to save fees reports as PDF's

If you try and save a Fees Report as a PDF format, it produces error 'Message: 23006' The error message states its related to read/write permissions.

## Actions

**Fixed**

User can now save the Fees Report as pdf from both Desktop and Workspace.

## ()\_Labels are not Displaying in the Survey/Spatial View

Defect LOLCM-2129 (Internal and External)

## Description

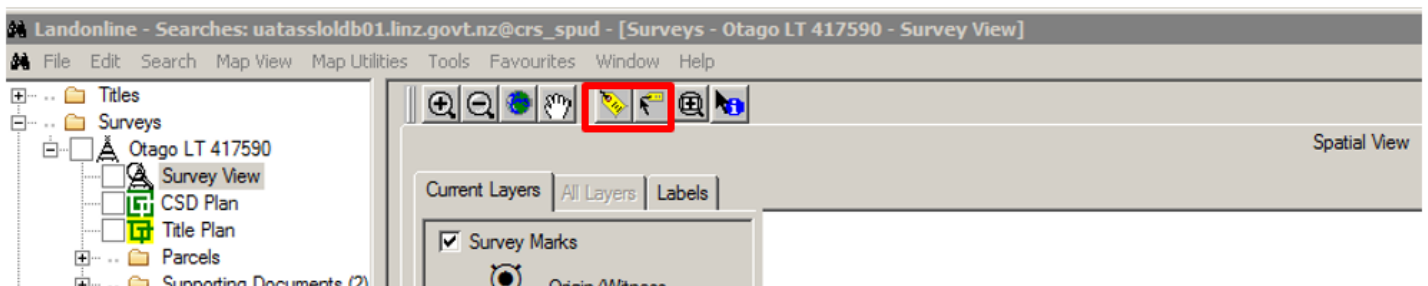
When trying to view labels in the 'Spatial View' of a plan, some labels were not displaying when they were selected using the label icons

## Action

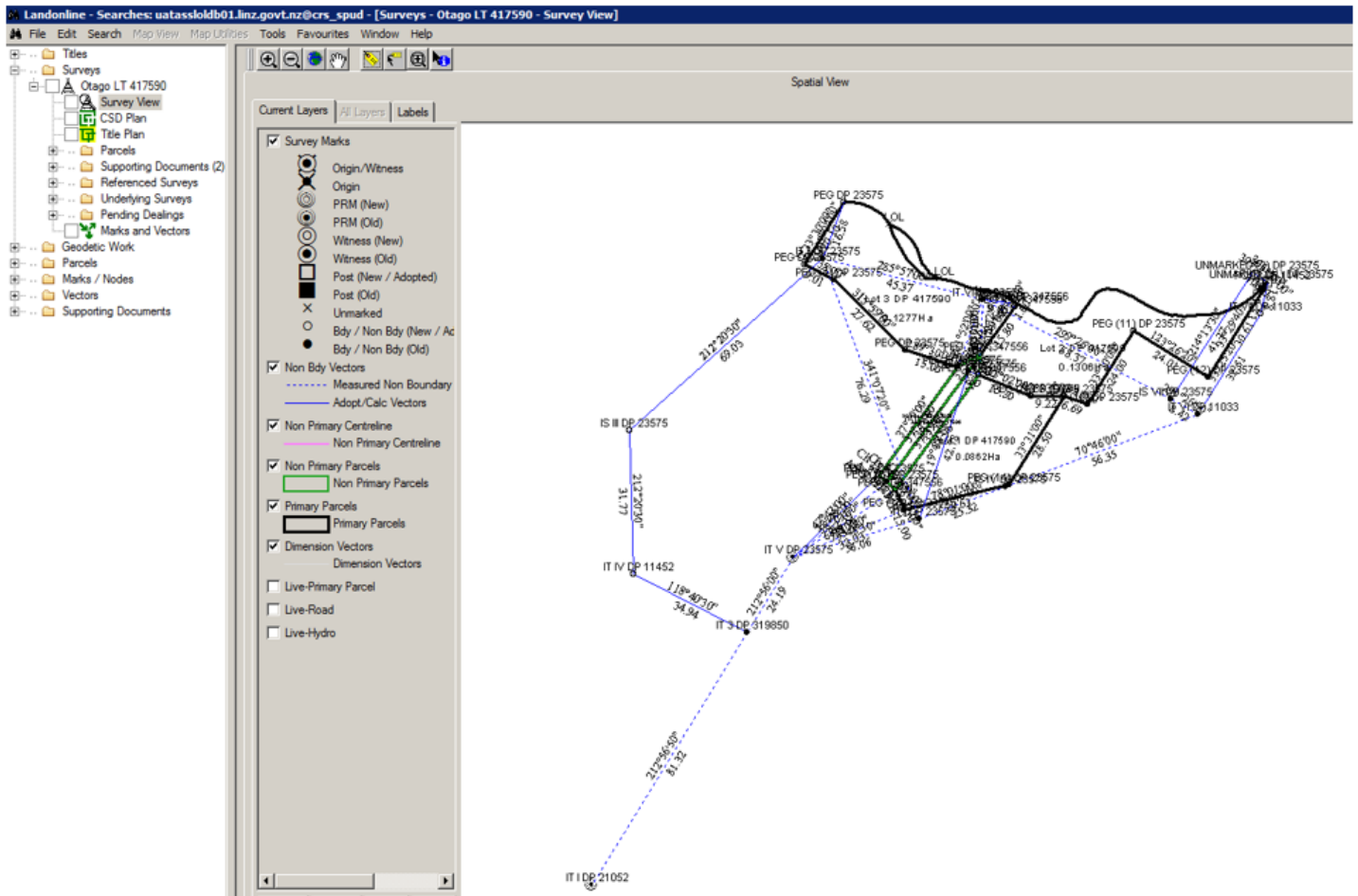
**Fixed**

When the 'Survey View' is opened from the Searches Tree, the Spatial View window opens up.

Selecting either of the two Label icons will now turn on the relevant label for each feature.



After clicking the large Label (selects all labels for features in an object) the vector and mark labels turn on



## ()\_Automated Schedule/Memorandum is Truncating the Second Line of the Purpose

Defect LOLCM-2194 (Internal and External)

### Description

In the Automated Schedule/Memorandum tab if a Purpose entered wraps over more than one line, and that purpose contains more than one page of entries, the second and subsequent pages were truncating the Purpose. In the example below, the Purpose entered was 'Party Wall, Construction & Maintenance' however the second page (which continued entries for this purpose) truncated this purpose to 'Party Wall, Construction &'.

Schedule of Easements  
Last Edited: 19 Jun 2020 10:33:51

<u>Purpose</u>	<u>Show</u>	<u>Servient Tenement</u> <u>(Burdened Land)</u>	<u>Dominant Tenement</u> <u>(Benefited Land)</u>
Party Wall, Construction &	DF	Lot 32	Lot 33
	DG, DH	Lot 33	Lot 32
	DI	Lot 33	Lot 34
	DJ, DK	Lot 34	Lot 33
	DL	Lot 34	Lot 35

### Action

Fixed

Purposes are no longer truncated if the entries in the schedule table extend over more than one page.

## ()\_Odd Behaviour in CSC\_S05 Line Layer Screen

Defect LOLCM-2208 (Internal and External)

### Description

Adopted Source when captured in the CSC\_S05 screen (Survey reference called from Survey Header/Referenced Plans), and then later on, that Referenced Plan is removed from the Survey Header, a SUE or id is replaced in the Adopted Source field in the CSC\_S05 screen.

### Action

Fixed

The adopted source on the irregular line still displays the adopted survey plan source. (expected)

## ()\_Parcels have detached from their nodes after parcel linking

Enhancement LOLCM-2230 (External)

### Description

Defect in production, whereby we are seeing numerous plans that have parcels detached from their nodes after they have been linked. Unfortunately for the surveyor, it was not obvious that this has occurred.



### Action

Fixed

Adjustment flag used in Plan Generation will reset every time the Layout Sheets are opened, to identify which routine to use in generating the parcel boundary lines to avoid the topology from becoming detached.

## ()\_Bearing Correction is Not Displaying in Mark & Vector Report

Defect LOLCM-2242 (Internal & External)

## Description

Adopted vectors with a bearing correction of 0°00'00" are not displaying on the Mark and Vector report in the CSD plan or in the SUD document when viewing from Searches.

IT IX ML 12061	IB SO 68770	ob89	8°41'00"	A	SO 68770		398.21	A	SO 68770
IB SO 68770	IS I SO 68770	ob90	27°24'40"	A	SO 68770		182.85	A	SO 68770
IT III ML 15452	IB XI ML 15452	ob80	307°24'00"	A	ML 15452		87.30	A	ML 15452
IB XI ML 15452	PEG ML 15452	ob91	332°32'00"	A	ML 15452		94.91	A	ML 15452
PEG ML 15452	IT III ML 15452	ob93	140°30'00"	A	ML 15452		177.83	A	ML 15452
IB XI ML 15452	PEG I ML 11733/2	ob92	329°43'00"	A	ML 15452		34.17	A	ML 15452
PEG I ML 11733/2	UNMK ML 11733/2	ob94	118°12'20"	A	ML 15452		40.23	A	ML 11733/2
UNMK ML 11733/2	PEG ML 15452	ob95	118°12'20"	A	ML 15452		40.58	C	
PEG ML 15452	IB XI ML 15452	ob96	279°08'30"	A	ML 15452		54.68	A	ML 15452
PEG XVI ML 12061	PEG ML 12061	ob82	170°12'30"	A	ML 12061	0°02'00"	37.88	A	ML 12061
PEG ML 12061	PEG ML 12061	ob98	170°12'30"	A	ML 12061	0°02'00"	54.80	A	ML 12061

Survey Number	Land District	Bearing Correction
ML 12061	North Auckland	0°02'00"
ML 15452	North Auckland	0°00'00"
ML 9361/4	North Auckland	0°02'00"
SO 68770	North Auckland	0°00'00"
ML 11733/2	North Auckland	0°02'00"

## Action

### Fixed

Change to the stored procedure has corrected the issue and bearing correction of 0°00'00" are now displaying on the Mark and Vector report in the CSD plan or in the SUD document when viewing from Searches. This will only affect plans in workspace from the fix onwards, previously submitted plans re-run in the batch will remain as they are.

FIG8

## (\_)9005 Error Message Displays in Manage Adjustment Screen

Enhancement LOLCM's 2286, 2289, 2290, 2292, 2298 and 2300 (Internal)

## Description

While performing a specific function in Maintain Network, an error 9005 is called and system crashes.

## Action

### Fixed

Error Message 9005 no longer called; system remains active.

**Last Updated:** 22 November 2020