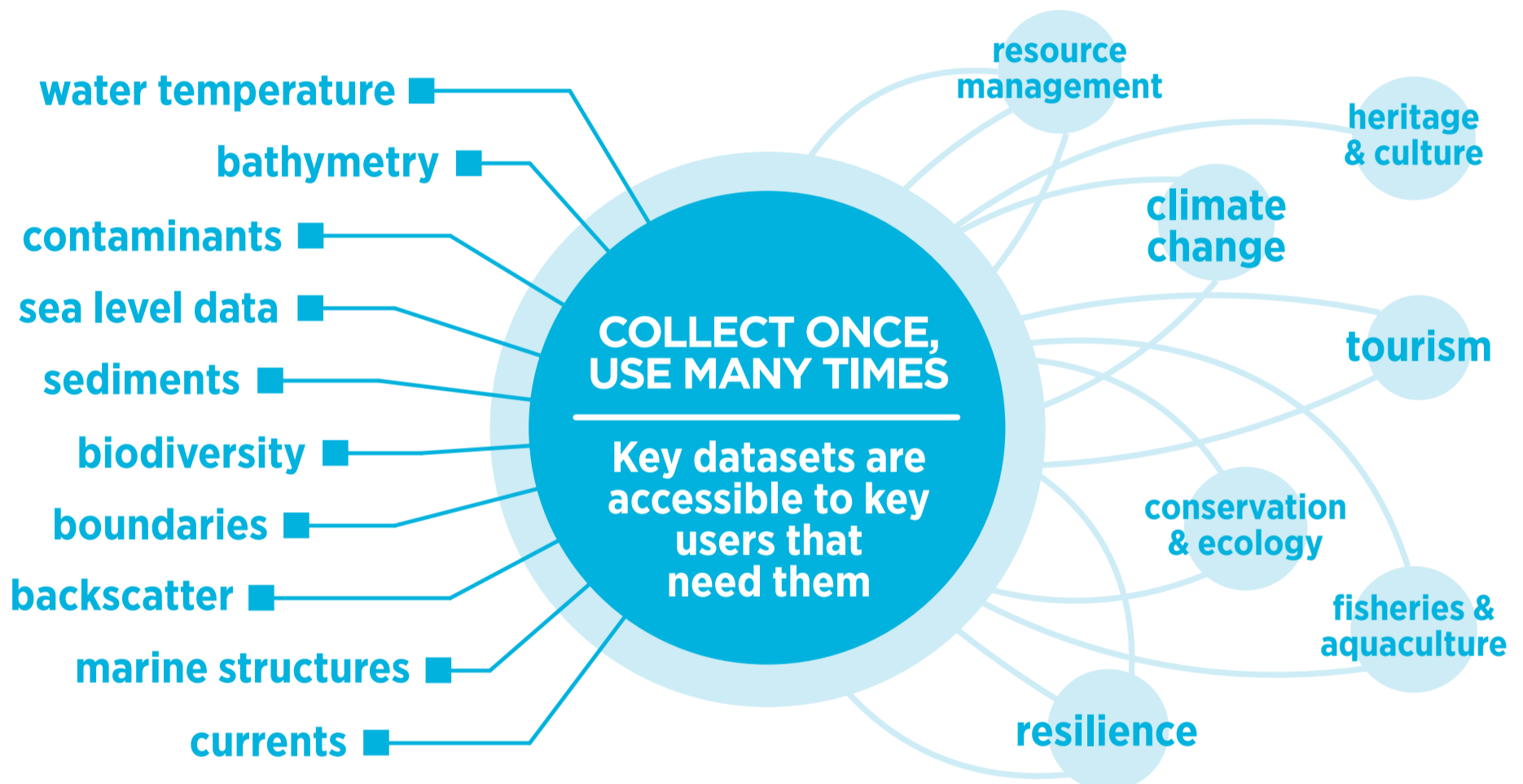


# High Value Marine Geospatial Information

A sustainable ocean economy that contributes to NZ growth requires support to critical sectors like fisheries, tourism or renewable energy. Building prosperity from our blue economy also means considering environmental issues such as climate change or resilience to natural and human-induced events.

To address key challenges and support better decision making, key marine geospatial datasets need to be accessible, freely available and re-usable. Collaboration between stakeholders will be essential to maximising the benefits of Marine Geospatial Information (MGI).



## Unlock and Grow the Value of MGI

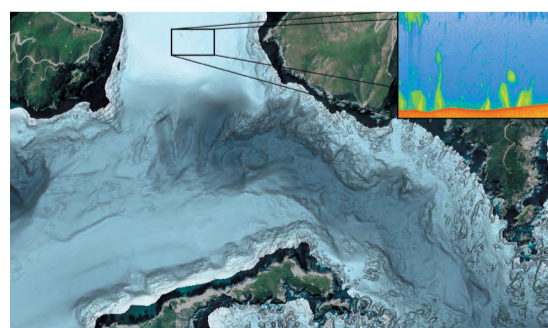
Our **mission** is to collect, manage and share marine geospatial information for the benefit of NZ.

Our **focus** is to achieve outcomes that add most value to NZ. For MGI this includes:

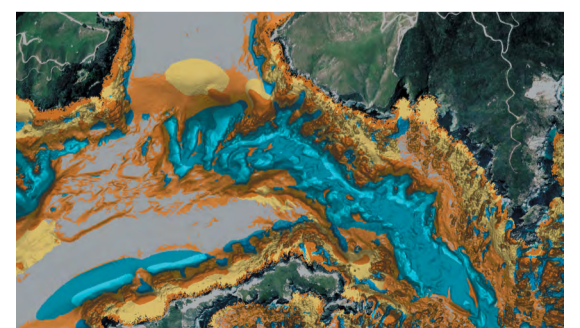
- identifying and opening up key datasets collected by LINZ and by others for public access
- building capability to access and use MGI
- connecting data through common standards

**Partnership Benefits** - LINZ and Marlborough District Council (MDC) recently commissioned a joint survey of Queen Charlotte Sound/ Tōtaranui. The hydrographic data will be used by LINZ to update navigation products and MDC will use the extensive science data to manage and protect marine resources.

The survey resulted in fascinating discoveries including fresh water seeps, scours, moats, sediment waves and even a few wrecks. This data is released under open creative commons license to encourage reuse.



Bathymetry map and water column



Benthic terrain classification