



CSD Plan - SO 490582

Survey Number SO 490582
Surveyor Reference 2130-132135-01 156A ROCKING HORSE RD
Surveyor David William Mawhinney
Survey Firm Harrison Grierson Consultants Ltd
Surveyor Declaration I David William Mawhinney, being a licensed cadastral surveyor, certify that:
(a) this dataset provided by me and its related survey are accurate, correct and in accordance with the Cadastral Survey Act 2002 and the Rules for Cadastral Survey 2010, and
(b) the survey was undertaken by me or under my personal direction.
Declared on 04 Sep 2015 08:43 AM

Survey Details

Dataset Description BOUNDARY REDEFINITION OF LOT 2 DP 27962
Purpose Boundary Marking - Full CSD (Conflict)
Status Registered **Type** Survey
Land District Canterbury **Survey Class** Class A
Meridional Circuit Mount Pleasant 2000

Survey Dates

Surveyed Date 12/08/2015 **Certified Date** 04/09/2015
Submitted Date 04/09/2015 08:43:03 **Survey Approval Date** 11/09/2015
Deposit Date

Referenced Surveys

Survey Number	Land District	Bearing Correction
DP 27962	Canterbury	0°00'00"
SO 488556	Canterbury	0°00'00"

Territorial Authorities

Christchurch City

Mark and Vector

Survey Number SO 490582
 Meridional Circuit Mount Pleasant 2000

From	To	Code	Bearing	Adpt Surv	Distance	Adpt Surv
8424	IT I DP 60948	ob0	169°12'10"	M	122.44	M
IT I DP 60948	IT XV DP 25957 (UNPROVEN)	ob3	266°13'30"	M	132.36	M
IT XV DP 25957 (UNPROVEN)	IS III DP 30882 (UNPROVEN)	ob4	354°10'00"	M	24.29	M
IS III DP 30882 (UNPROVEN)	8428 POSN ABT2011	ob5	1°01'00"	M	52.31	M
8428 POSN ABT2011	8424	ob6	64°36'45"	M	122.52	M
8424	NAIL 6 SO 488556	ob1	162°49'30"	A SO 488556	40.54	A SO 488556
NAIL 6 SO 488556	IS I DP 360074	ob7	192°40'00"	A SO 488556	24.99	A SO 488556
IS I DP 360074	IT I DP 60948	ob8	163°57'30"	A SO 488556	59.50	A SO 488556
IS I DP 360074	IT 8 SO 488556	ob9	249°48'00"	M	68.22	M
IT 8 SO 488556	NAIL 7 SO 488556	ob11	330°27'30"	M	20.53	M
NAIL 7 SO 488556	NAIL 10 SO 488556	ob15	69°18'30"	M	35.52	M
NAIL 10 SO 488556	NAIL 6 SO 488556	ob17	69°18'30"	A SO 488556	49.60	A SO 488556
IS I DP 360074	PEG 14 SO 488556	ob10	322°35'00"	M	19.36	M
PEG 14 SO 488556	DISK 28 SO 488556	ob20	250°00'10"	A SO 488556	31.74	A SO 488556
DISK 28 SO 488556	PEG 26 SO 488556	ob22	159°48'10"	A DP 27962	17.18	A SO 488556
PEG 26 SO 488556	IS I DP 360074	ob23	71°59'00"	M	37.50	M
PEG 14 SO 488556	PEG 14 SO 490582	ob21	343°56'00"	A DP 27962	3.67	A DP 27962
PEG 14 SO 490582	IT III DP 27962	ob24	250°00'10"	C	32.00	C
IT III DP 27962	PEG 16 SO 490582	ob25	250°00'10"	C	40.64	C
PEG 16 SO 490582	PEG VII DP 27962	ob26	159°48'10"	A DP 27962	3.66	A DP 27962
PEG VII DP 27962	PEG 18 SO 490582	ob27	159°48'10"	A DP 27962	16.84	C
PEG 18 SO 490582	PEG 26 SO 488556	ob28	70°29'00"	C	40.64	C
NAIL 10 SO 488556	IT 20 SO 490582	ob18	301°19'00"	A SO 488556	2.32	A SO 488556
IT 20 SO 490582	IT III DP 27962	ob29	152°39'00"	M	0.11	M
IT 8 SO 488556	IT II DP 360074	ob12	62°54'00"	M	5.98	M
IT II DP 360074	IS I DP 360074	ob30	70°27'30"	M	62.29	M
IT 8 SO 488556	IS III DP 360074 (UNPROVEN)	ob13	246°07'00"	A SO 488556	37.93	A SO 488556
IS III DP 360074 (UNPROVEN)	IS III DP 30882 (UNPROVEN)	ob31	261°45'00"	A SO 488556	19.60	A SO 488556
8424	PEG 14 SO 490582	ob2	188°06'00"	M	44.64	M
IT 8 SO 488556	PEG 18 SO 490582	ob14	260°46'00"	M	10.07	M
NAIL 7 SO 488556	PEG 16 SO 490582	ob16	267°58'00"	M	6.90	M
NAIL 10 SO 488556	DISK 28 SO 488556	ob19	196°06'00"	M	2.42	M

Mark Name	Description
8424	Capped.
8428 POSN ABT2011	Capped.
IS I DP 360074	Flush.
IS III DP 30882 (UNPROVEN)	Down 0.2m in Estuary.

Mark and Vector

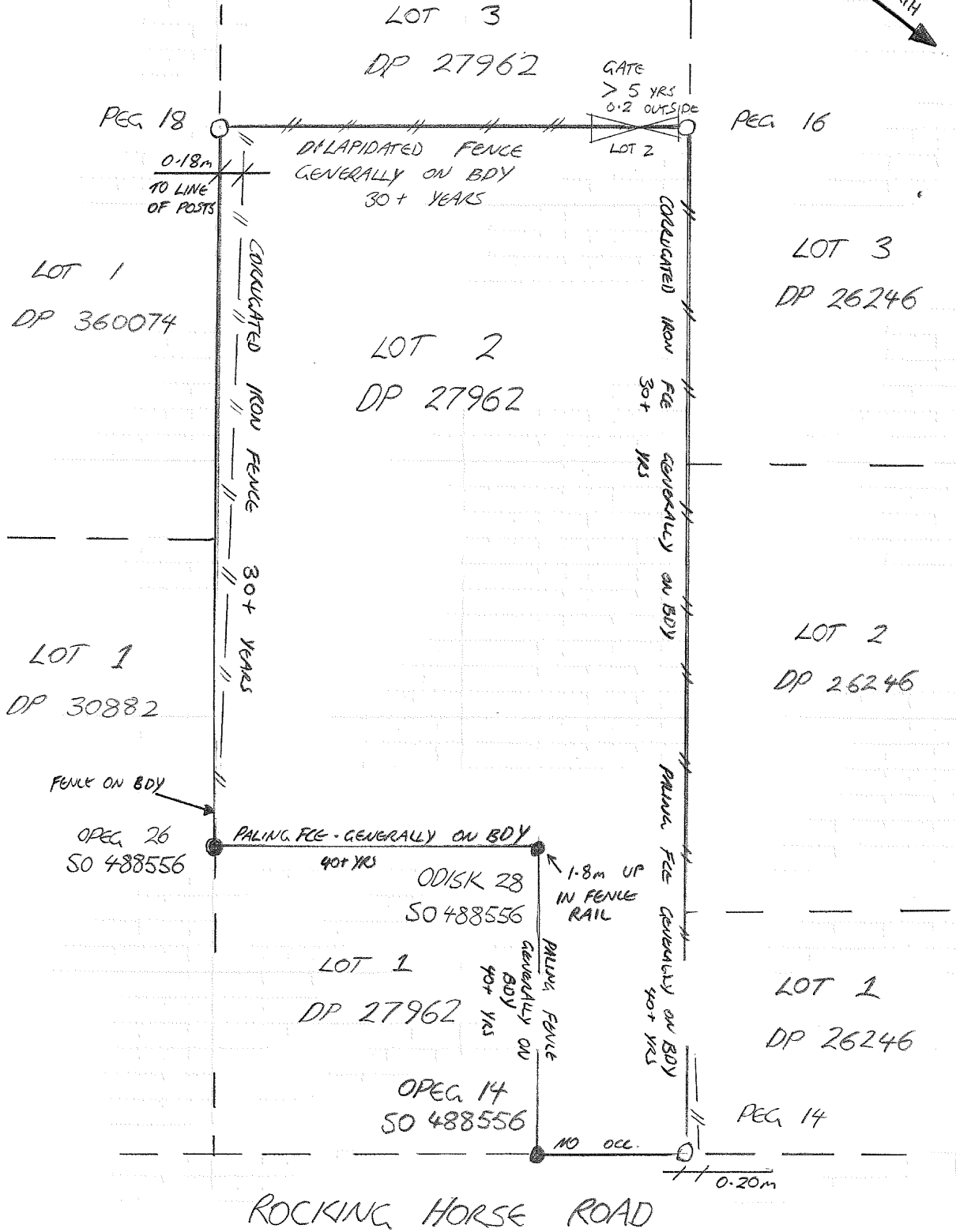
Survey Number SO 490582
Meridional Circuit Mount Pleasant 2000

Mark Name	Description
IT 20 SO 490582	IT III DP 27962 Disturbed. Down 0.15m
IT 8 SO 488556	Down 0.3m
IT I DP 60948	Flush.
IT II DP 360074	Down 0.2m.
IT XV DP 25957 (UNP	Down 0.15m in Estuary
NAIL 10 SO 488556	Flush in Driveway.
NAIL 7 SO 488556	Flush in Driveway.

***** End of Report *****

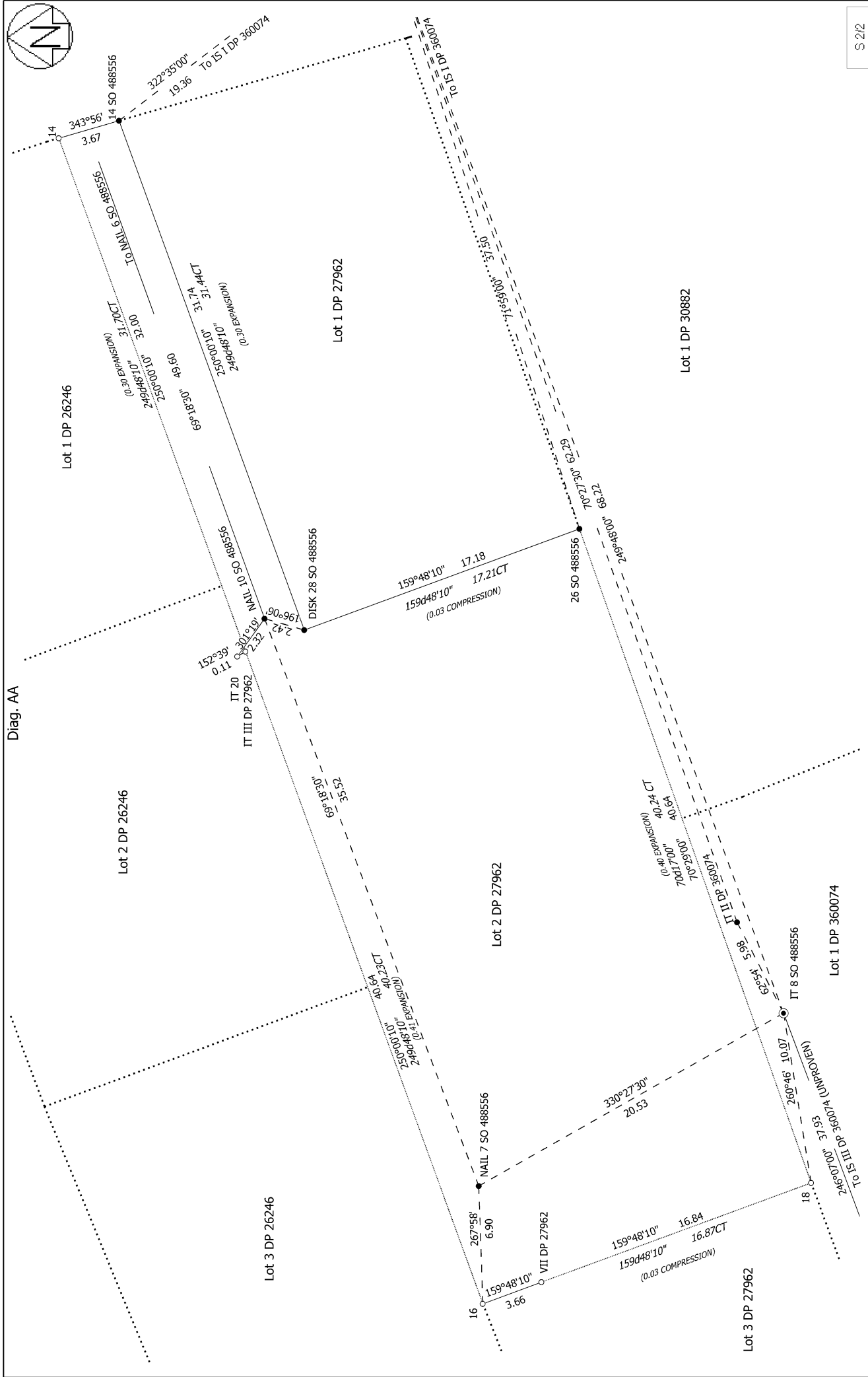
Occupation Diagram

OCCUPATION DIAGRAM



CLIENT: SOUTHERN RESPONSE	SO 490582
PROJECT NAME: 156A ROCKING HORSE RD	PAGE NO: 1/1
PROJECT NO: 2130 - 132153 - 01	PREPARED BY: AJM
DATE: 17/8/15	CHECKED BY: DWM





S 2/2

Land District: Canterbury
 Digitally Generated Plan
 Generated on: 11/09/2015 1:29pm Page 6 of 6

BOUNDARY REDEFINITION OF LOT 2 DP 27962

Surveyor: David William Mawhinney
 Firm: Harrison Grierson Consultants Ltd
 Survey Date: 12/08/2015

CSD Plan
 SO 490582
 Approved on: 11/09/2015