



Release notes for surveyors

Changes for surveyors as part of Landonline release 3.11.

This release covers these issues and enhancements:

[Water and irregular boundary annotations \(#water-boundary\)](#)

[Vectors required in a CSD \(#vectors\)](#)

[Marks changing state when linked or unlinked from the Mark Details screen \(#changing-marks\)](#)

[Decommission Offline Plan Generation – last phase \(#offline-plan\)](#)

[Re-enable Meridional Circuit ‘OCD’ for plans with topology \(#meridional\)](#)

[CSC S02 Survey Header Screen Referenced Survey Field does not allow Field Books to be added \(#csc-s02\)](#)

[Plan Generation – Ampersand \(&\) in an Edited System Label causes Error 47 \(#ampersand\)](#)

[Include proposed parcel when recalculating survey fees for plans on requisition \(#proposed-parcel\)](#)

[Automated Survey Report \(#automated\)](#)

[New TA Certificate for Section 32\(2\)\(a\) Stage Plans \(#new-ta\)](#)

[Multiple changes of mark information \(#mark-info\)](#)

[Restrict the ability to update mark condition to LINZ staff \(#restrict\)](#)

[Reduce risk of accidental deletion of survey dataset \(#reduce\)](#)

[Update of Territorial Authority name from Lower Hutt City to Hutt City \(#hutt-city\)](#)

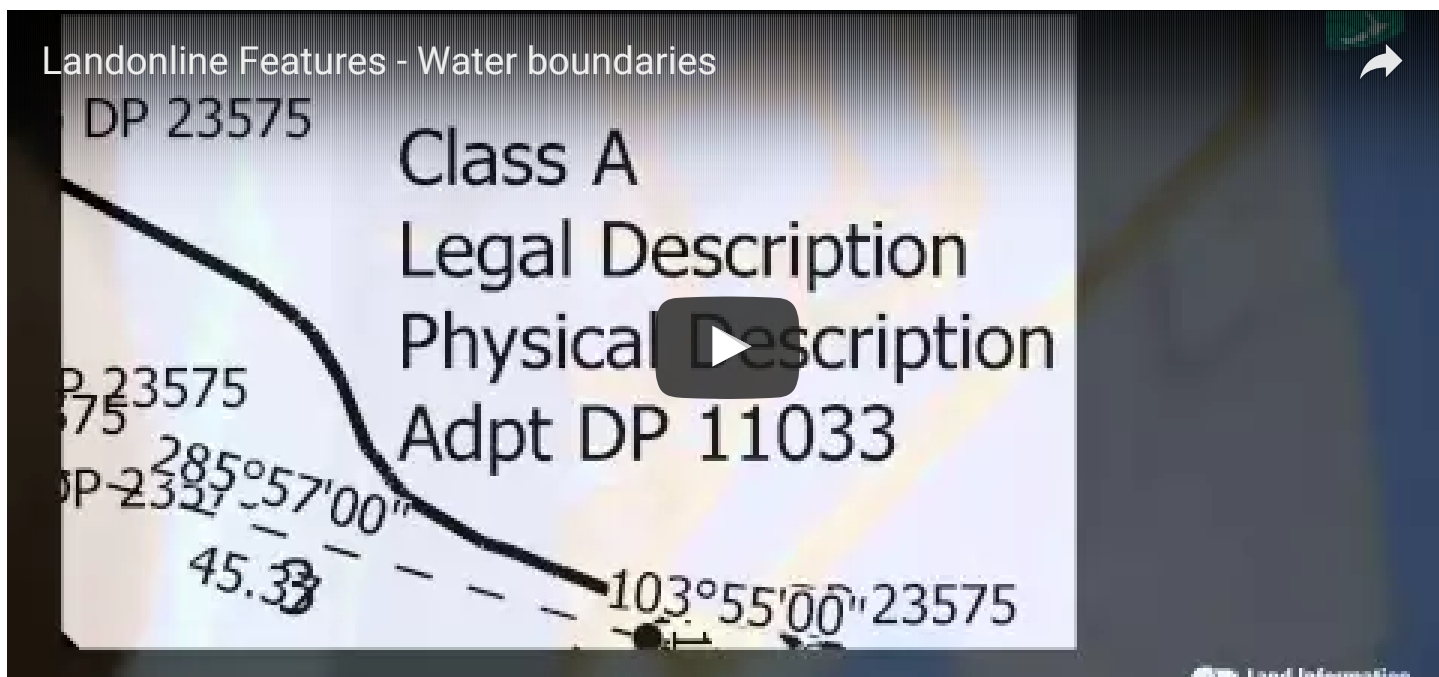
[Plan Generation – Defects in Layout Plan Sheets \(#plan-defects\)](#)

[\(\)](#) Water and irregular boundary annotations

Water boundaries require an annotation to be added for legal and physical description of the boundaries.

RCS 9.4(c), 9.6.7(c) and 10.4.5(c)

[Read about water and irregular boundary annotations \(/kb/697\)](#)



(Q) Vectors required in a CSD

Rule 8.1(e) RCS2010 requires a minimum of two vectors for each boundary point and each new survey mark. The C470 rule will run at Prevalidation to report where the two vector requirement has not been complied with.

[More detailed information on vectors required in CSDs \(/kb/698\)](#)

(Q) Marks changing state when linked or unlinked from the Mark Details screen

Mark State would change from 'Adopted' to 'Old' or 'Adopted' to 'New' whenever an adopted mark was linked or unlinked via the Mark Detail Screen (CSC_S03b).

This issue has been fixed. Now:

- When you link an Adopted mark using the 'Link Mark' button in the CSC_S03b Mark Detail screen, the Mark State will remain as 'Adopted'
- When you unlink an Adopted mark using the 'Unlink Mark' button in the CSC_S03b Mark Detail screen, the Mark Stage will remain as 'Adopted'

CSC_503b - Mark Detail

Mark Details:

Mark Ref: 5 Lol Mark Id: 6082393 Link Mark...

Mark Type Abbrev: SP Mark No: V Mark Plan Ref: DP 31775 Unlink Mark

Name: SP V DP 31775

Mark Type: Pin Condition: Not Found

Mark State: 0 - Adopted Purpose: Non Boundary

Nothing: 820866 983 Easting: 407603.079

Description:

Mark Reliability Details:

Action: Original Renewed Disturbed

Date:

Lol Mark: New Search...

Annotation:

Next OK Cancel

Linking and unlinking adopted marks via the Spatial Window functionality has not changed.

Decommission Offline Plan Generation – last phase

Offline Plan Generation has now been decommissioned.

- The Plan Generation tab has been edited to only allow Online Plan Generation
- You can no longer Export plans
- You can no longer Import plans

Re-enable Meridional Circuit 'OCD' for plans with topology

Previously, Meridional Circuit 'OCD' could be used on plans that did not have topology, but it did not work on plans that create parcels.

Plans can now be captured in terms of Meridional Circuit OCD.

If your plan was OCD but changed to 2000 or 1949 to allow you to link parcels, and you now wish to have the plan reflect OCD then follow the steps below:

1. In the Survey Header, change the Meridional Circuit to the relevant OCD circuit
2. Select OK to close the Survey Header to save the change
3. Open the Mark Capture screen and select the 'Refresh' button
4. Close the Mark Capture screen

5. Open the Spatial Window
6. Select Capture|Refresh
7. You should be able to link your parcels in OCD now
8. Close the spatial window
9. Re-run Prevalidation
10. Run Plan Generation to generate new images.

CSC_S02 Survey Header screen Referenced Survey field does not allow Field Books to be added

Before this Release, the Survey Header screen did not allow for Field Books to be added as a 'Referenced Survey'.

Field Book references can now be added to the Survey Header under 'Referenced Survey'.

1. Select Add Survey
2. Enter the Field Book reference into the 'Survey Number' field
3. Select Tab to allow other fields to be populated

The screenshot shows the 'CSC_S02 - Survey Header' window. The 'Survey Number' field contains 'LT 417590'. The 'Survey Purpose' is 'LT Subdivision'. The 'Land District' is 'Otago'. The 'Type of Dataset' is 'Survey'. The 'Survey Class' is 'Class A'. The 'Surveyor Ref' is 'Job Number & Complete'. The 'Surveyor' is 'mckone001'. The 'Surveyor's Firm' is 'linzovs'. The 'Legal Firm/Agent' is empty. The 'Description' is 'Lots 1, 2 & 3 being subdivision of Lots 6 & 16 DP 23575 and Road'. The 'Meridional Circuit' is 'Observation Point 2000'. The 'Comprised In Reference' table is empty. The 'Referenced Survey' table has the following data:

Survey Number	Land District	Bearing Cor
DP 23575	Otago	0.0000C
DP 23575	Otago	0.0000C
FB 1440/29	Otago	0.0000C

The 'Territorial Authorities' table has the following data:

Territorial Authority
Waikato District

Plan Generation – Ampersand (&) in an Edited System Label

causes Error 47

If a system label containing an ampersand (&) is edited to be displayed on two lines, then the layout sheets saved and closed - error 47 displays when the user attempts to re-open their layout sheets. For example: 'Section 238 Hua & Waiwakaiho HUN'.

This has been fixed so that system labels containing '&' can now be edited to display on two or more lines without error.

Q Include proposed parcel when recalculating survey fees for plans on requisition

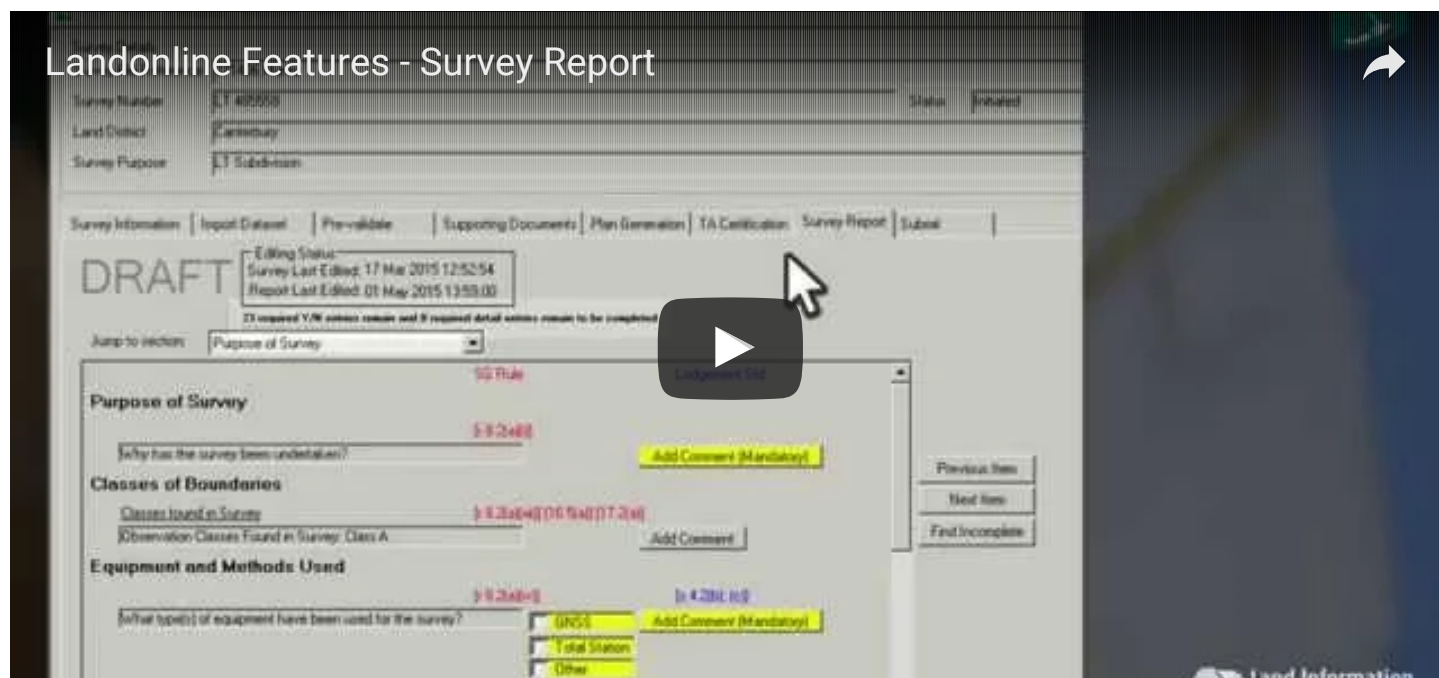
Previously, when a PUD or SPUD plan was requisitioned and a new Proposed Parcel added at Capture, fees needed to be recalculated for the new parcel at submit.

Fees are now recalculating for the new Proposed parcels at Submit of the dataset.

Q Automated Survey Report

Survey Reports are created by a surveyor giving details of a survey as required by the RCS2010.

[Find out how you can try the new automated survey report \(/kb/699\)](#)



Q New TA Certificate for Section 32(2)(a) Stage Plans

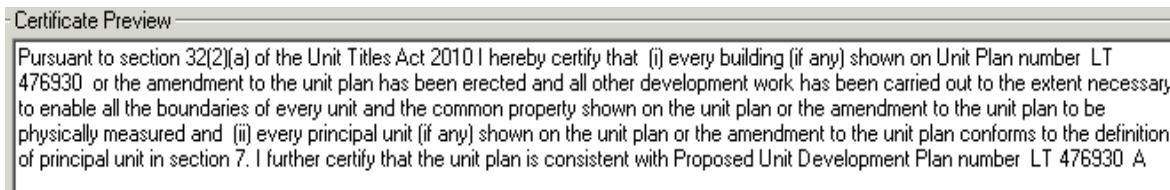
TA certification for staged unit plans is currently set up in such a way that a TA might miss the 'extra' certification that is required under s25(5) Unit Titles Act.

TA certification has combined 32(2)(a) and 25(5) to be a combined TA certification for First, Subsequent Stage and Complete stage unit plans.

TA Certification 32(2)(a) still remains as a certification on its own.

32(2)(a)	32(2)(a)
32(2)(a) & 25(5)	32(2)(a) & 25(5) First, Subsequent Stage and Comp

New TA certification wording for 32(2)(a) & 25(5)



Multiple changes of mark information

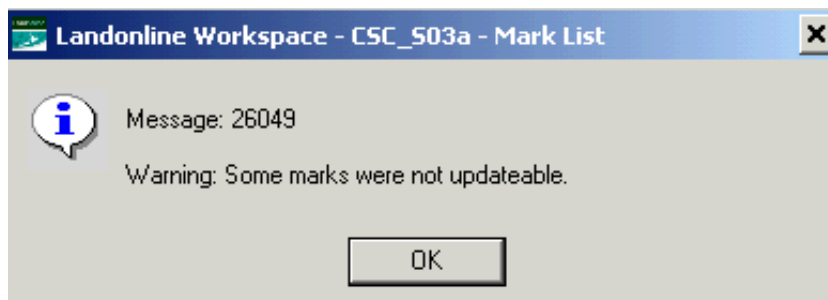
Multiple changes to common fields within mark capture was not possible and it was time consuming to make numerous edits to marks at Capture.

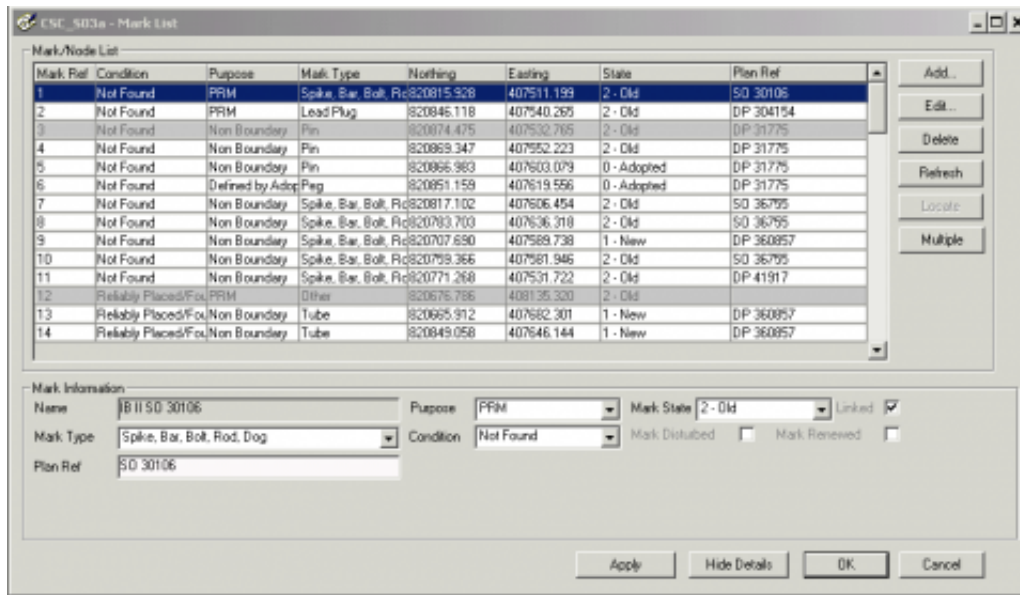
New functionality now allows a user to make multiple changes to common fields for Marks in the CSC_S03a Mark List screen:

- Multiple button – select this to edit multiple marks (button shows Single when in Multiple mode)
- Mark Information group box – fields that can be edited
- Apply button – select this to apply the multiple changes
- Single button – select this to return to single mode and carry on with normal work (button shows Multiple when in Single mode)

Note: Not all marks are editable by this new functionality. Geodetic Marks and System Added marks are not editable. Marks you cannot edit are highlighted light grey in the Mark List screen.

If you attempt to edit multiple marks and have one of these two types selected in the 'Multiple' selection, you will receive the following message to inform you that some marks were not updateable.





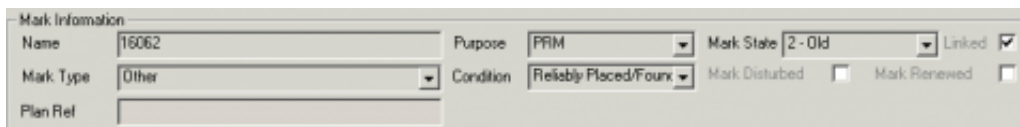
Q Restrict the ability to update mark condition to LINZ staff

Until now, users were able to edit geodetic mark 'Conditions' at Capture and the Geodetic group were not being informed of the changes.

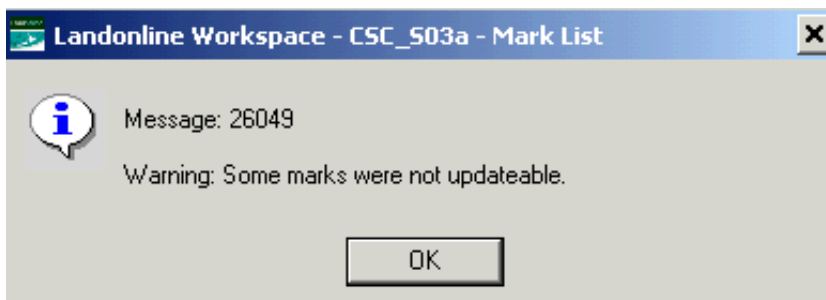
For this reason, functionality of changing mark 'Condition' has been removed from Workspace.

The Mark List screen:

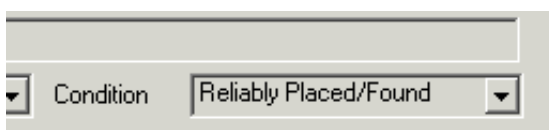
- In Single mode, fields are greyed out in the Mark Information part of the screen



- In Multiple mode, a message will appear if you attempt to edit a Geodetic Mark 'Condition'



- In Single mode, if you select the Mark in the Mark List screen and select 'Edit' the 'Condition' field is greyed out



- If you wish to edit Mark State or Mark Purpose for a geodetic mark then use Single Mode, select the

mark from the Mark List and select 'Edit' to make the changes.

Q Reduce risk of accidental deletion of Survey Dataset

Changes have been made to reduce the risk of deleting a dataset:

- The 'Delete Dataset' button has been moved from the CSL_S02 window and placed inside the 'Survey Information' tab.
- The shortcut key (Alt D) has been removed off the 'Delete Dataset' button so that users do not delete inadvertently.

[Read more about how to delete a survey dataset \(/kb/700\)](#)

Q Update of Territorial Authority name from Lower Hutt to Hutt City

The label for the Lower Hutt City Territorial Authority District has been changed to reflect that of its administering authority i.e. 'Hutt City'. Hutt City now displays in the drop down options of Territorial Authority Names in the TA Certification tab at Capture.

Q Plan Generation – Defects in Layout Plan Sheets

When text added in Layout Plan Sheets exceeded a certain size, it previously behaved erratically, e.g. text was truncated under certain conditions. This issue has now been fixed.